

LP-P8C62445USD

8000 series unshielded CAT 6 Patch Panel with 24 ports and 45° degrees of entry angle.

LPP8C62445USD_SS_ENB01W

Features

- 24 ports unshielded.
- ETL verified to TIA/EIA 568-B CAT 6.
- Handles larger CAT 6 conductors.
- Center tuned to LanPro patch cords.
- UL and CSA USA and Canada approved.
- Superior performance to traditional designs, improved 45 degree entry angle that avoids dust and dirt particles.
- Better bending radius for less stress to patch cords.
- 568-A and 568-B compatible.
- Universal 110 wiring termination.
- Unshielded type.
- Rugged construction.
- Cable Management clips at the rear of the unit.
- Backwards compatible with CAT 5e systems.
- Black durable and elegant finish.
- High performance copper alloy contacts, 50 micro-inches of gold plating.
- Life of 200 punch cycles.
- 750 cycles of jack insertion (worst case).
- Outstanding price/performance ratio.
- Fully compatible with 19" rack mount standards.
- High density and low profile design supports good cabling practice.
- LanPro World Wide Warranty.



LP-P8C62445USD 8000 series unshielded CAT 6 Patch Panel with 24 ports and 45° degrees of entry angle.

The LanPro 8000 series CAT 6 24 ports patch panels with entrance angle of 45° degrees are used on high speed LAN Gigabit transmission systems, with a proven bandwidth in excess of 300 MHz. These units are developed with proprietary PCB (Printed Circuit Board) and improved component geometries, resulting in a better performance, surpassing the TIA/EIA specifications.

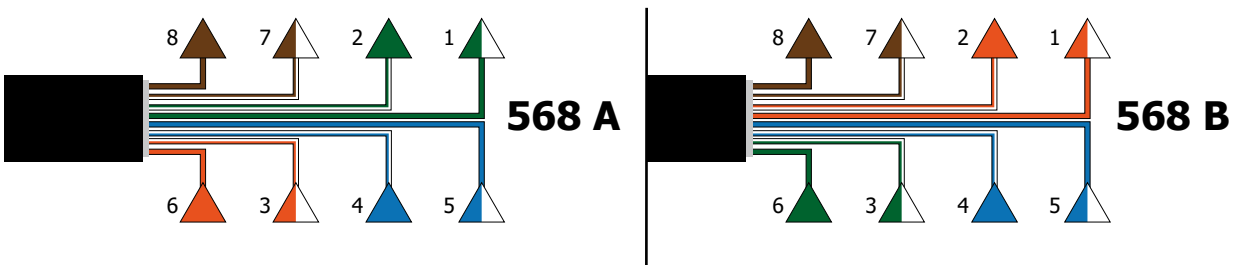
This new design allows the use of both, Kröne and 110D punching tools, and has colored 568-A and 568-B codes both on the top of the new version 110D for easy installation. The 45 degree angle entry is a very desirable feature, because there is less stress for both, the jack panel and the connecting cords. The bend radius is improved and this feature naturally protects the connection point from being disturbed or damaged.

A Technical Specifications

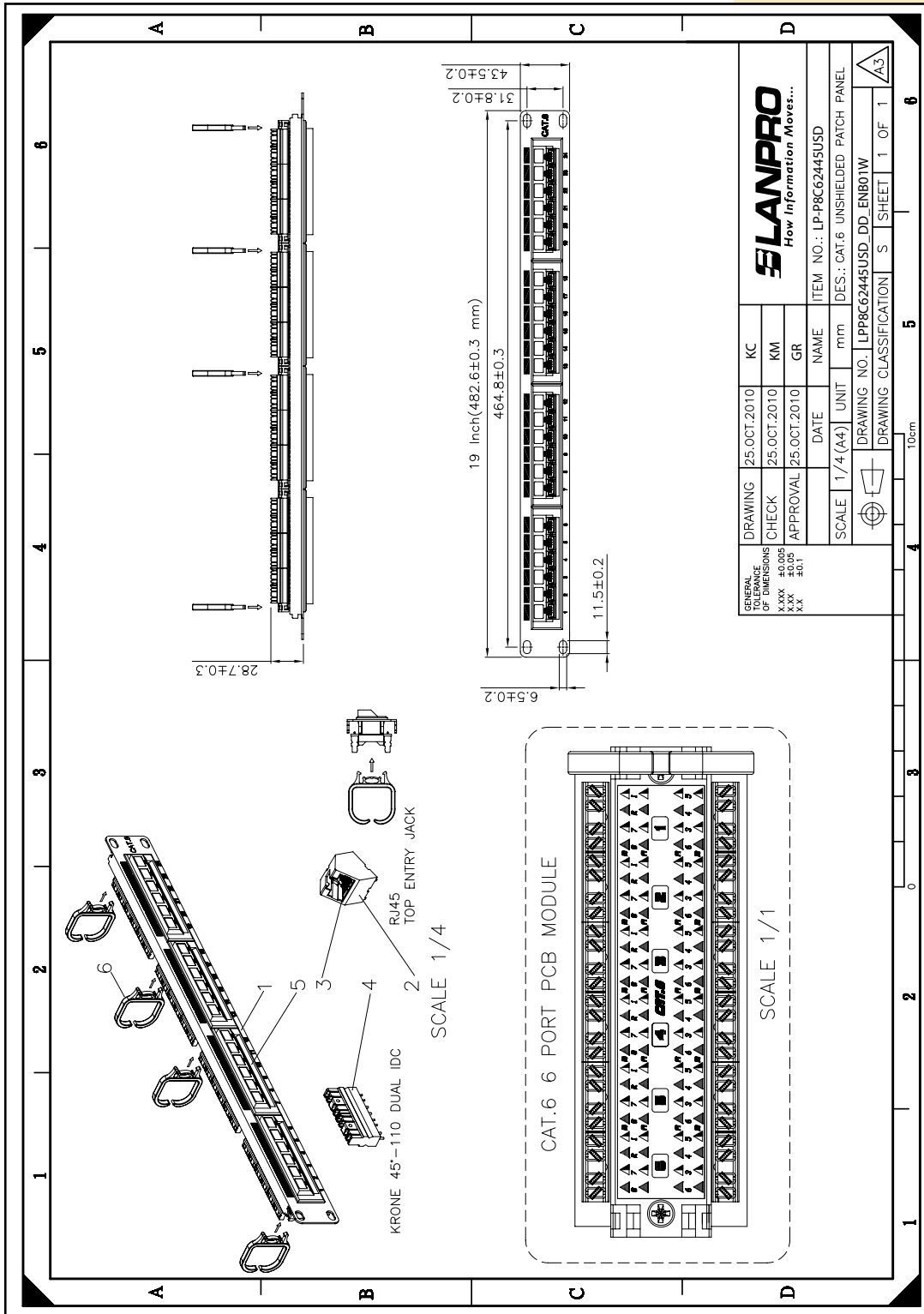
Material	
1.- Panel	SPCC, 1.5 mm thickness painted black color (RAL 9005).
2.- RJ45 Jack:	
2.1.-Housing:	PBT+glass fiber, UL 94V-0.
2.2.-Contact Bracket:	PBT+glass fiber, UL 94V-0.
3.- RJ45 Jack Contact:	
3.1.-Material:	Phosphor bronze with nickel plating.
3.2.-Finish:	50 micro-inch Gold Plated on Plug contact area.
4.- IDC	
4.1.-Housing:	PC+glass fiber, UL94V-2.
4.2.-Terminal:	Phosphor bronze with tin plating.
5.- Jack Bracket Set:	ABS UL 94V-0.
6.- Cable Holder:	Nylon
7.- PCB:	FR4, UL94V-0.
8.- Shielding	Unshielded type

Performance	
a.- Wiring:	T568-A & T568-B wiring.
b.- Insertion Force:	20N max. (IEC 60603-7-4).
c.-Retention Strength:	7.7 Kg between jack and plug.
d.-Operating Temperature:	-10°C to 60°C. (ISO 11801, IEC60603-7-4).
e.-Life (mating cycles)	
e.1.-Jack:	750 cycles min. (ISO/IEC 11801, IEC 60603-7-4).
e.2.-IDC:	200 cycles maximum, suitable for 22-26 AWG stranded and solid wire, compatible with both 110 & Kröne punch down tools.
f.-Transmission Performance:	The CAT 6 transmission performance is in compliance with the ANSI/TIA/EIA 568 B.2-1 standard.

B How to terminate example



C Dimensional Drawings



GENERAL DIMENSIONS X.XXX ±0.005 X.XX ±0.05 X.X ±0.1	DRAWING	25.OCT.2010	KC	ITEM NO.: LP-P8C62445USD DES.: CAT.6 UNSHIELDED PATCH PANEL DRAWING NO. LPP8C62445USD DD ENB01W
	CHECK	25.OCT.2010	KM	
	APPROVAL	25.OCT.2010	GR	
SCALE	1/4 (A4)	UNIT	mm	DRAWING CLASSIFICATION
DRAWING NO. LPP8C62445USD DD ENB01W		DRAWING CLASSIFICATION		SHEET 1 OF 1

D How to Order

LP-P8C62445USD 8000 series unshielded CAT 6 Patch Panel with 24 ports and 45° degrees of entry angle.

LanPro is continuously improving its products and reserves the right to change specifications and availability without prior notice.