

**LP-LRJ458P8CCAFS10**

**RJ45 8P8C CAT 6A, Oversize 1.2mm, One Part (Pass-Through) Shielded "Easy Plug" with Gold-Plated Contacts with three Prongs for solid wire conductors.**

LPLRJ458P8CCAFS10\_SS\_ENB01W

**Features:**

- 8P8C head style (8 positions, 8 contacts).
- Fully shielded design.
- CAT 6A standards compliance for Gigabit Ethernet.
- Extremely high-quality module plugs.
- Compatible with solid wire.
- These plugs also support telephone applications at home or office cabling systems.
- Slanted gold-plated three prong contacts with 50 micro-inches of gold over 50 micro-inches of nickel pierce the solid wire laterally without breaking it or the contact, making it for better performance, higher signal strength, and the corresponding better data transmission characteristics.



**LP-LRJ458P8CCAFS10**  
**RJ45 8P8C CAT 6A, Oversize 1.2mm, One Part**  
**(Pass-Through) Shielded "Easy Plug"**  
**with Gold-Plated Contacts**  
**with three Prongs for solid wire conductors.**

The RJ45 8P8C CAT 6A fully shielded plug with gold plated contacts and three slanted prongs for solid wire conductors is mainly used for making fully shielded patch cords that serve the purpose of interconnection of Structured Cabling Systems based on the CAT 6A category standard.

This plug has 8 contacts and a full shielded cover and is compatible with the 568-A and 568-B wiring schemes. This connector can be used also in telephony applications and is able to carry up to 4 telephone pairs enabling the possibility for the telephone PABX apparatus to have up to four lines connected to the telephone company.

These plugs allow field preparation using solid conductors. With a gold-plated surface contact thickness of 50 micro-inches, it assures long life and a high degree of resistance against corrosion and environmental hazards.

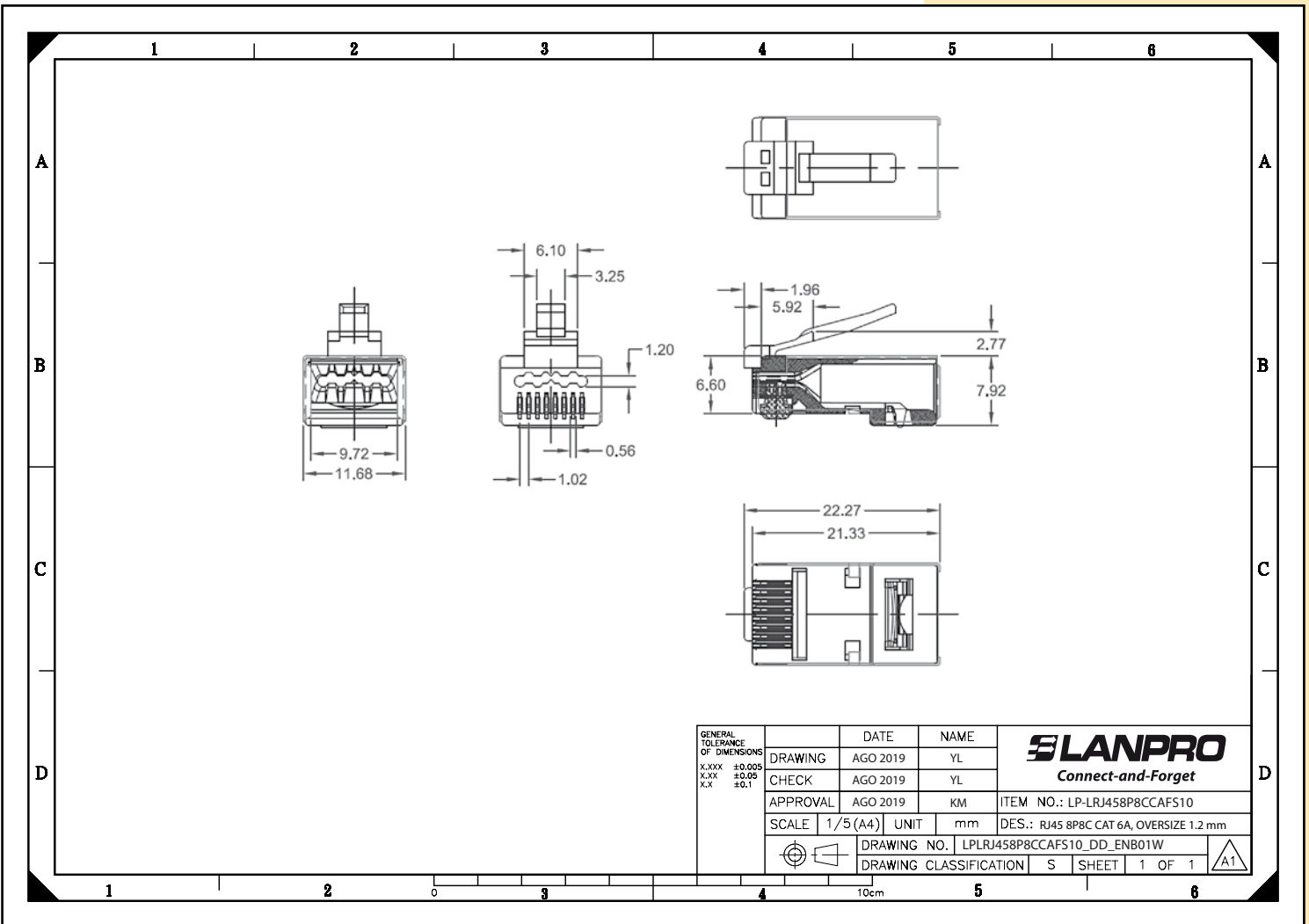
Based on international standards like the ISO/IEC 11801, TIA 568 and EB50173, LanPro RJ45 plugs provide long life span for your structured cabling installations.

Even though LanPro does not recommend the by-hand field termination, mostly due to problems with repeatability and certification to stringent specs, the experienced and careful user can reach good and certifiable terminations. Automatic factory-made terminations are recommended and encouraged by using standard sized patch cords, also manufactured by LanPro on a variety of colors.

**A Specifications**

<b>Housing Material</b>	Polycarbonate, UL 94V-2, transparent color. RoHS Compliant
<b>Contacts Type</b>	Three prong pins, fits solid/stranded wires
<b>Gold Plating</b>	Phosphor bronze, finish: 50 micro-inches gold plating over 50 micro-inches nickel plated on contact area
<b>Shielded Material</b>	Stainless Steel
<b>Operating Temperature</b>	-10°C a 60°C

**B Dimensional Drawings**



## C Tests Values

Category	Unit	Test Method	Condition
Melt volume flow rate	cm <sup>3</sup> /10min	ISO 1133	300°C load 1.2kg
Density	kg/m <sup>3</sup>	ISO 1183	-
Water absorption rate	%	ISO 62	In water 23°C 24h
Light transmission	%	ASTM D 1003	Thickness 3mm
Refractive index	-	ASTM 542	-
Tensile Modulus	Mpa	ISO 527-1 and ISO 527-2	1mm/min
Tensile stress at yield	Mpa		50mm/min
Tensile stress at yield	%		50mm/min
Nominal tensile strain at break	%		50mm/min
Flexural Modulus	Mpa	ISO 178	2mm/min
Flexural strength	Mpa		2mm/min
Charpy impact strength	Kj/m <sup>2</sup>	ISO 179	Unnotched Notched
Heat deflection temperature	°C	ISO 75-1 y ISO 75-2	1.80Mpa 0.45 Mpa
Vicat softening temperature	°C	ISO 306	50°C/h 50N
Mold Shrinkage	%	In-house method	Parallel Vertical
Coefficient of linear expansion	x10 <sup>-4</sup> /°C	ISO 11359-2	Parallel Vertical
Specific inductive capacity	-	IEC 60250	100Hz
	-		1MHz
Dielectric loss tangent	x10 <sup>-4</sup>	IEC 60250	100Hz
	x10 <sup>-4</sup>		1MHz
Volume resistivity	Ω*m	IEC 60093	-
Surface resistivity	Ω	IEC 60093	-
Withstand voltage	MV/m	IEC 60243-1	Short time test
Tracking resistance	-	IEC 60112	-
Flammability	-	UL 94	-
Temperature index	°C	UL 746B	Electric 1.47mmt
			Impact 1.47mmt
			Non-impact 1.47mmt

**Note: The values listed are specification values, not certified values**

## D How to order

**LP-LRJ458P8CCAFS10 RJ45 8P8C CAT 6A, Oversize 1.2mm, One Part (Pass-Through) Shielded "Easy Plug" with Gold-Plated Contacts with three Prongs for solid wire conductors.**