

# 123 Manual, How to terminate a double jacketed F/UTP CAT 6A/6 Outdoor LP-C6370BKC cable with the LP-LRJ458P8CC6FL21 Plug

LPLRJ458P8CC6FL21\_M123\_ENC01W

**1**

Please choose the connection standard

**Norma A**

- 1- White-Green
- 2- Green
- 3- White-Orange
- 4- Blue
- 5- White-Blue
- 6- Orange
- 7- White-Brown
- 8- Brown

**Norma B**

- 1- White-Orange
- 2- Orange
- 3- White-Green
- 4- Blue
- 5- White-Blue
- 6- Green
- 7- White-Brown
- 8- Brown

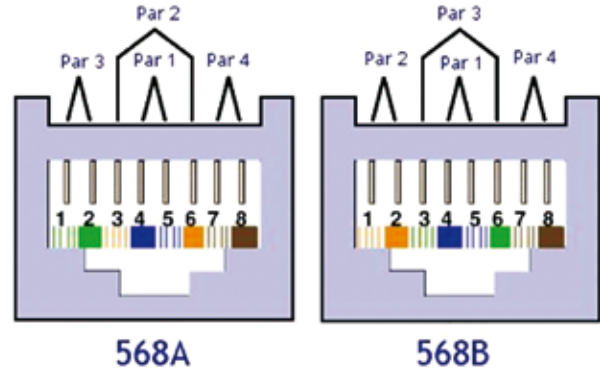


Figure 1

**2**

The needed tools are shown in Figure 2:

- a. Ruler Metric
- b. LP-C6370BKC Double jacket F/UTP Outdoor Cable by LanPro
- c. Solder 60/40 Tin/Pb
- d. 1 Pair of pliers
- e. 1 LP-LRJ458P8CC6FL21 CAT 6A/6 FTP RJ45 plug by LanPro
- f. LPT-210C LanPro (Crimper-Cutter)
- g. Cable stripper LPT-S501A by LanPro
- h. Soldering Iron 25 W
- i. Screwdriver
- j. Cutting plier.

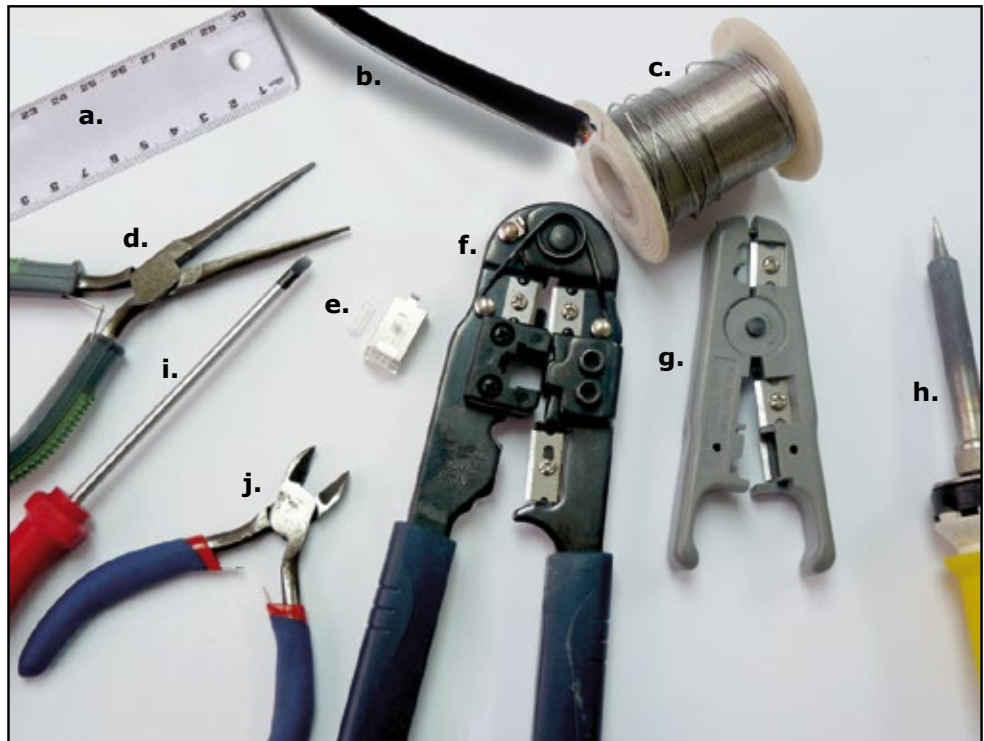


Figure 2

**3**

Figure 3 shows the plug main parts.

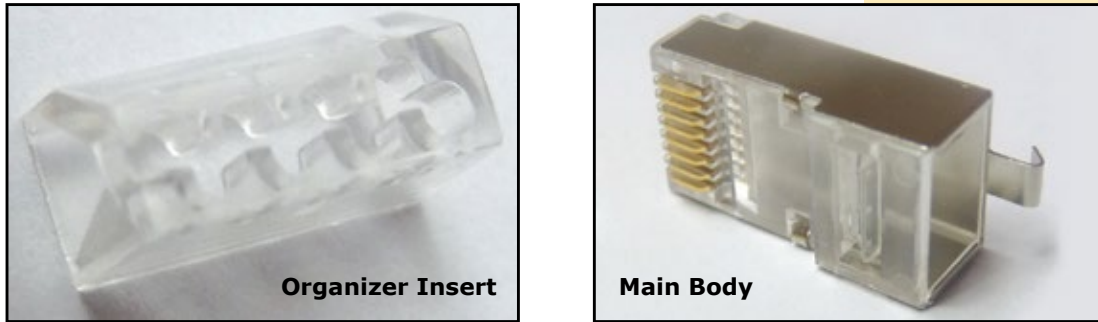


Figure 3

**4**

Proceed to strip a 60mm length of the external jacket as shown in the images of Figure 4.

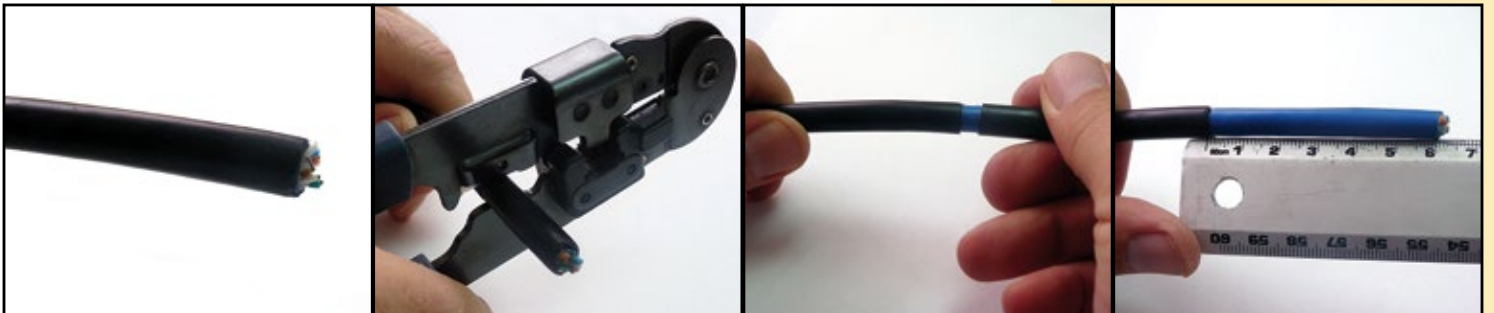


Figure 4

**5**

Insert the snagless boot on the cable, then strip a length of 30 mm of the internal jacket as shown in the images of Figure 5.

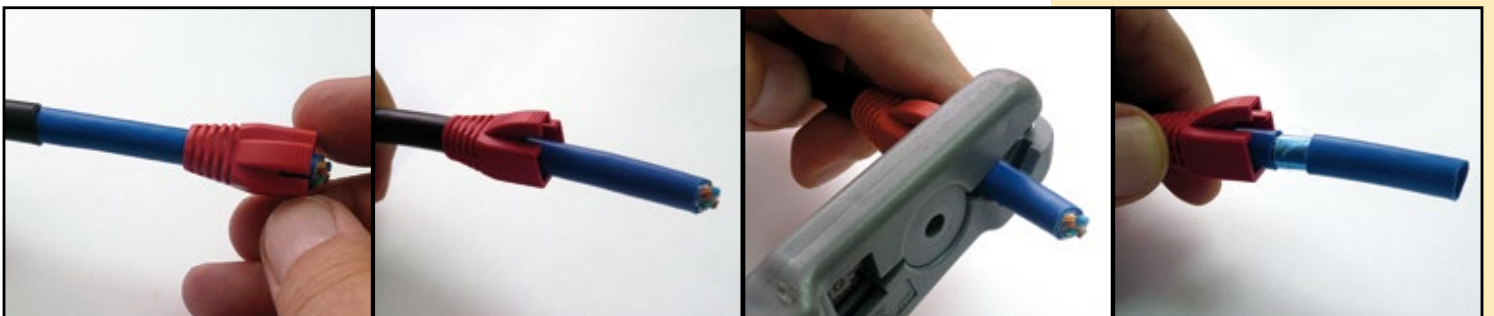


Figure 5

## 6

Proceed to strip the aluminum foil shield and the jacket and put the drain wire aside for later connection to the grounding pin of the connector as shown in the images of **Figure 6**.

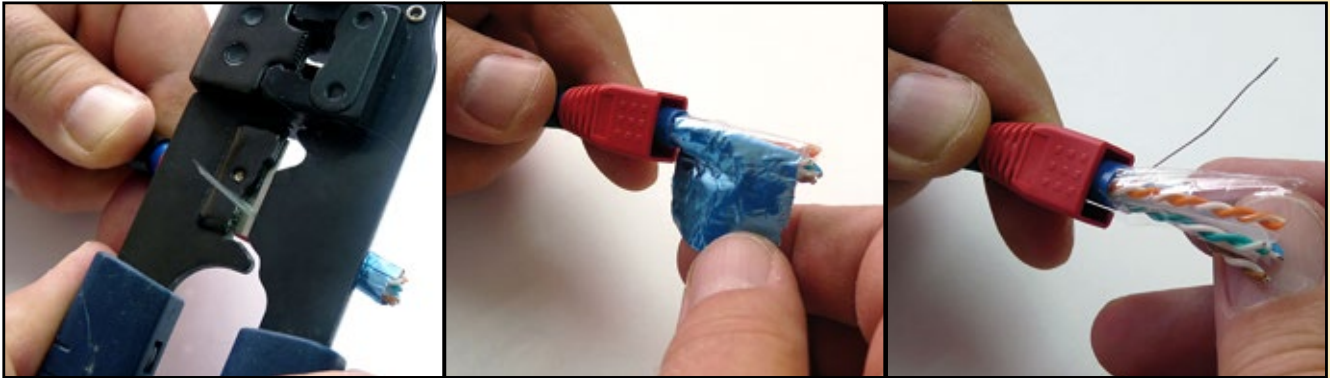


Figure 6

## 7

Please separate the copper conductor pairs and cut the plastic separator as shown in the images of **Figure 7**.

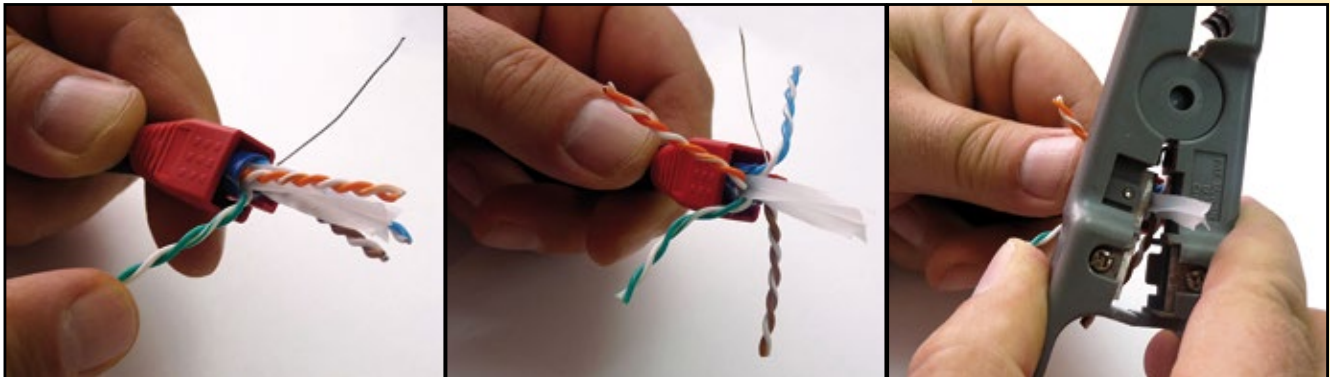


Figure 7

## 8

Please separate each of pair wires and straighten them with the help of the screwdriver as shown in the images of **Figure 8**.

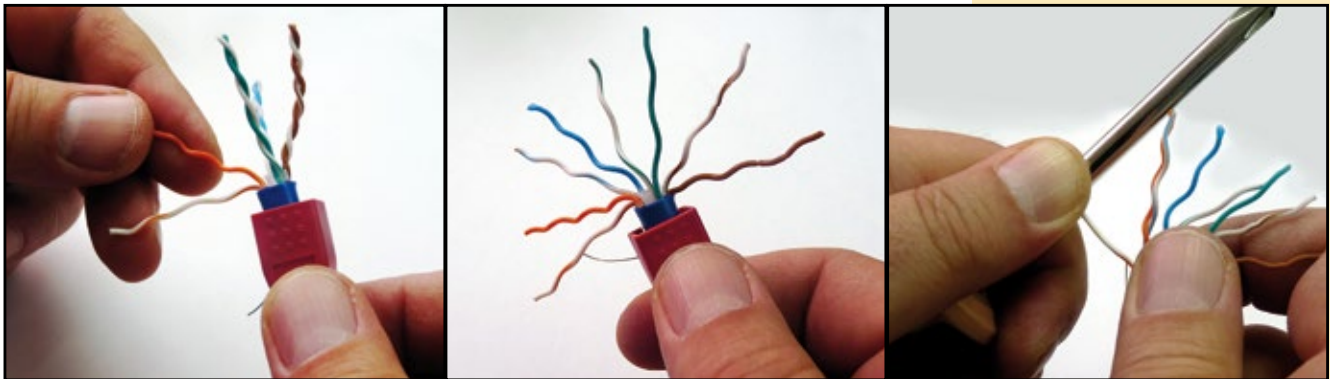


Figure 8

## 9

Proceed to order the wires as per the 568 B standard and to measure 30mm and place a mark with the rule to cut the wires as shown in **Figure 9**.

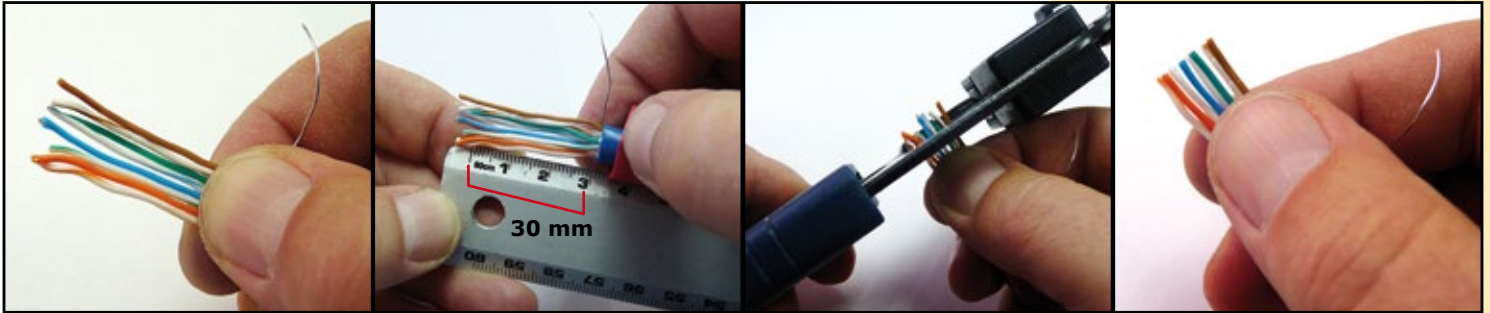


Figure 9

## 10

Proceed to bend the individual color coded conductors with a 10 to 15 ° as shown in **Figure 10** maintaining the 568 B standard.

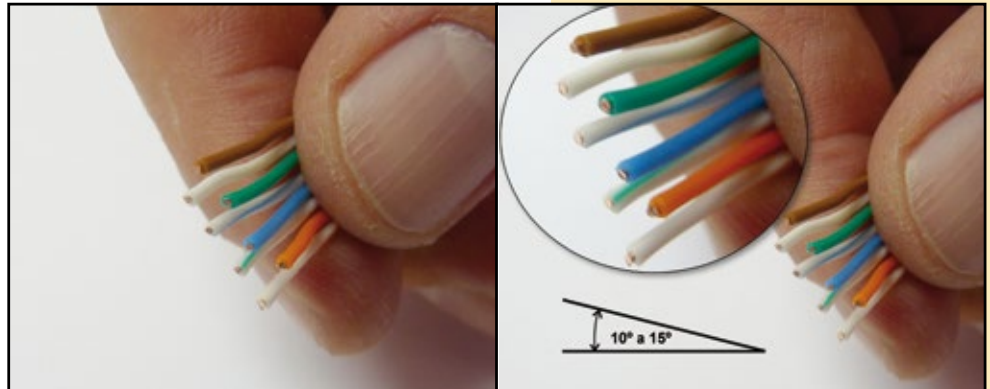


Figure 10

## 11

Proceed to insert the conductors maintaining the order explained above in the **Organizer Insert**, as shown in **Figure 11**.



Figure 11

## 11

Proceed to slide the Organizer Insert until it touches the border the internal jacket as shown in **Figure 12**.

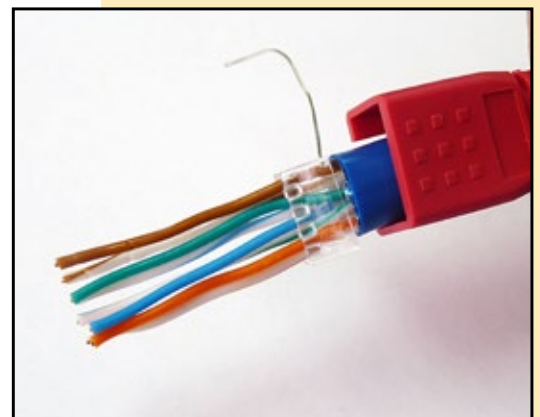


Figure 12

12

Please measure the approximate distance with a ruler from the **Organizer Insert** until the extreme of the **Main Body**, of 10mm and mark with a pencil, as shown in the images of **Figure 13**.

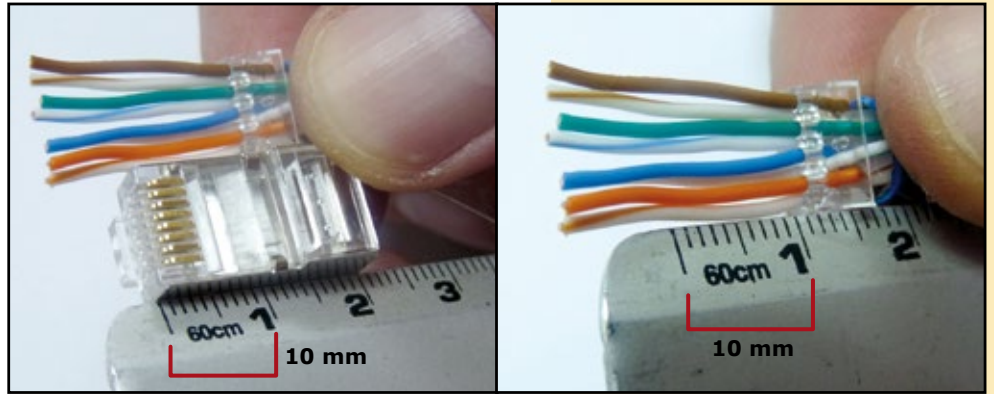


Figure 13

13

Use the Crimper-Cutter tool to make a straight cut as measured above as shown in the images of **Figure 14**.

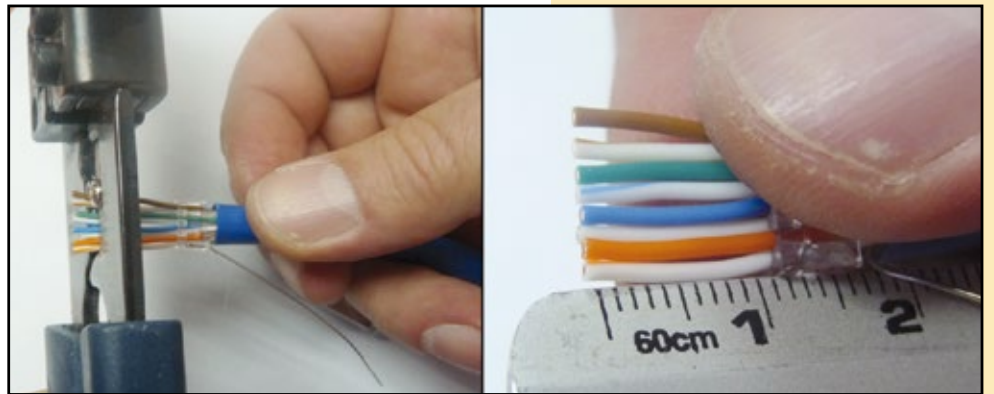


Figure 14

14

Insert the cable in the **Main Body** as shown in the group of images of **Figure 15**.

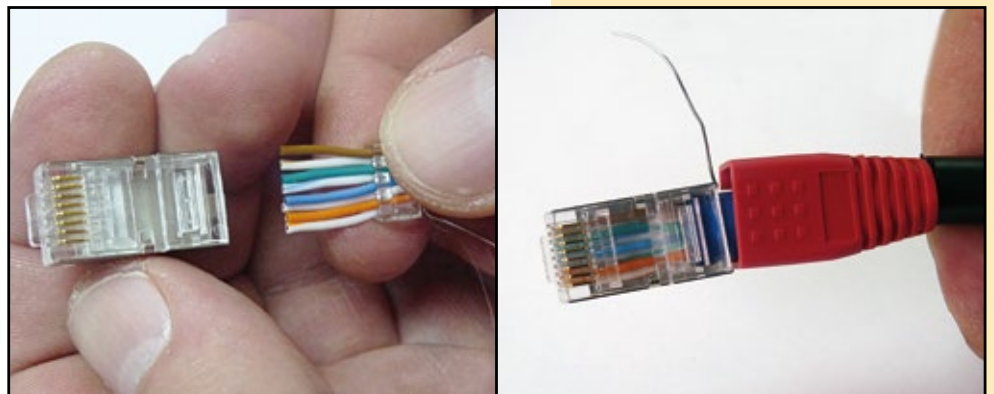


Figure 15

## 15

Check that all the individual conductor tips reach the extreme of the **Main Body** as shown in the Images of **Figure 16**.

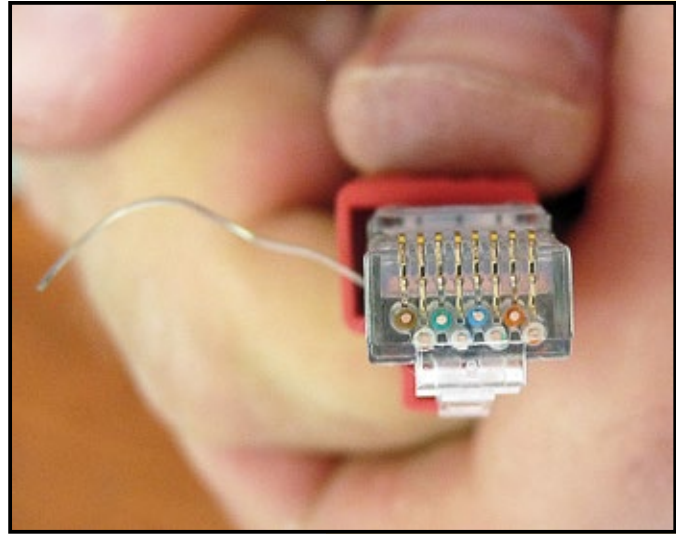


Figure 16

## 16

Proceed to crimp the plug with the Crimper-Cutter tool as shown in the images of **Figure 17**.

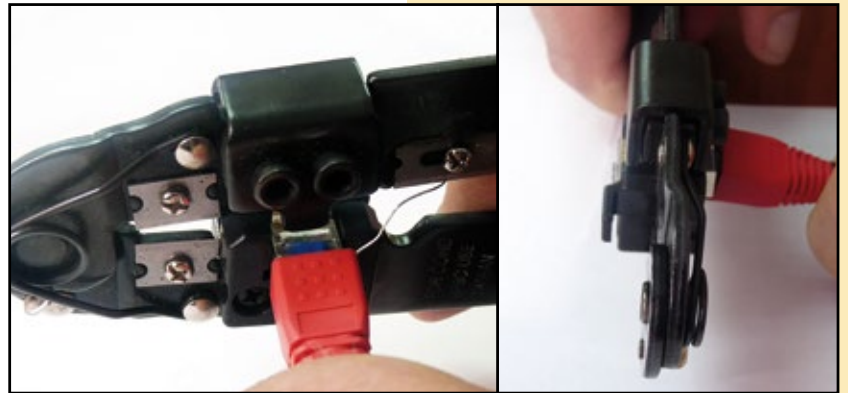


Figure 17

## 17

With a pair of pliers, tilt-up the soldering lug of the plug and tie 1 ½ turns of the drain wire as shown in the images of **Figure 18**.

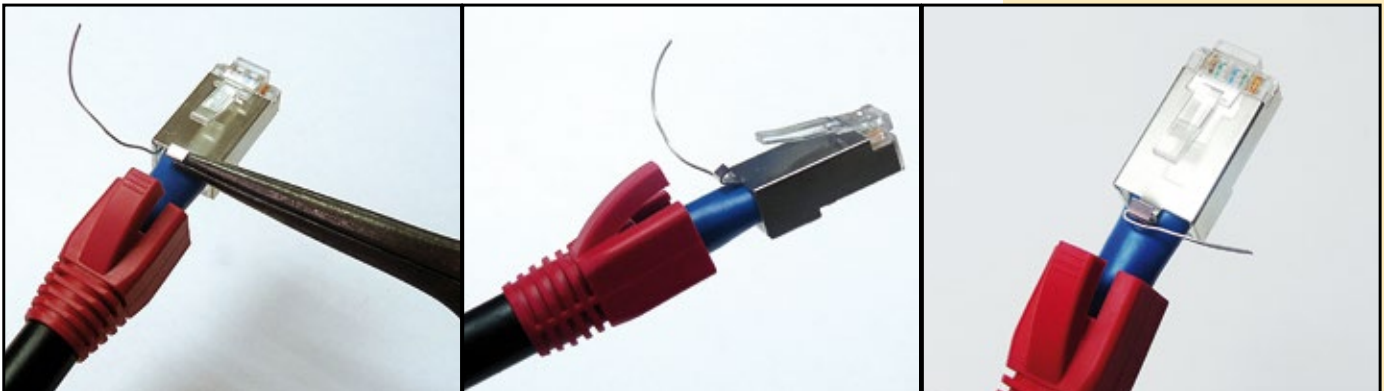
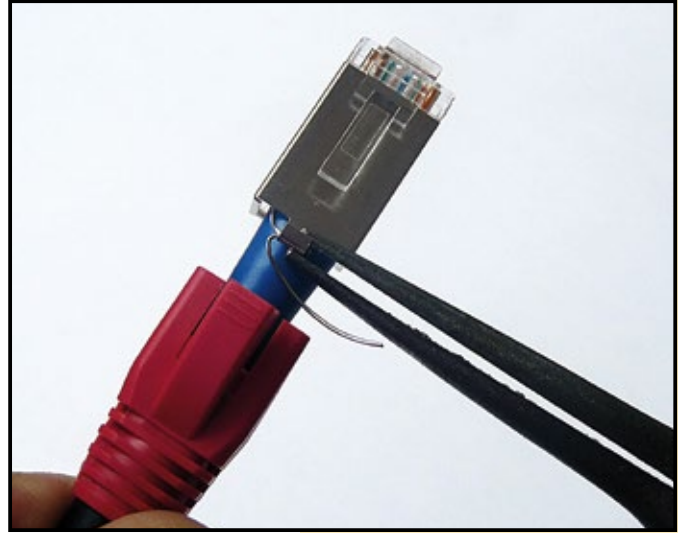


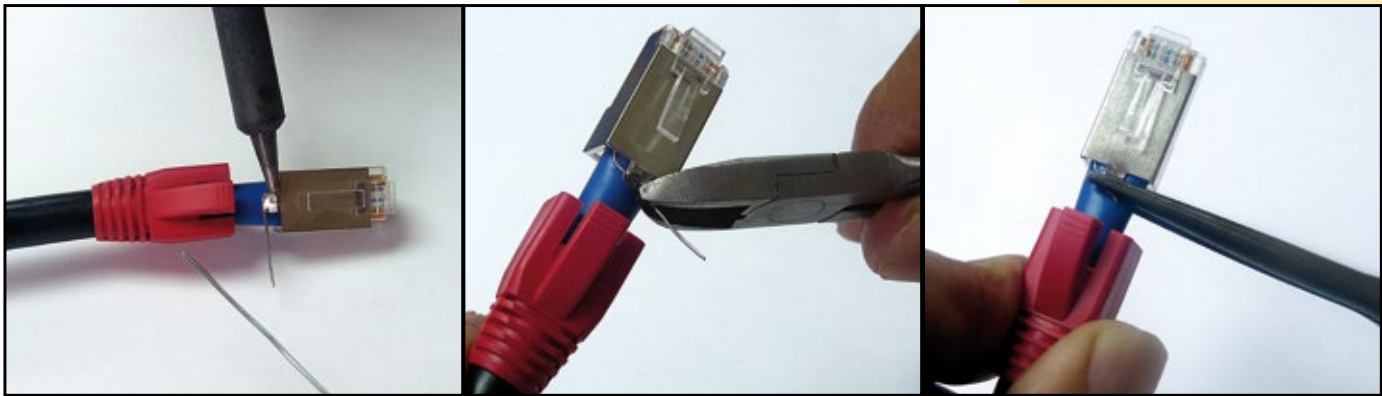
Figure 18

**18**

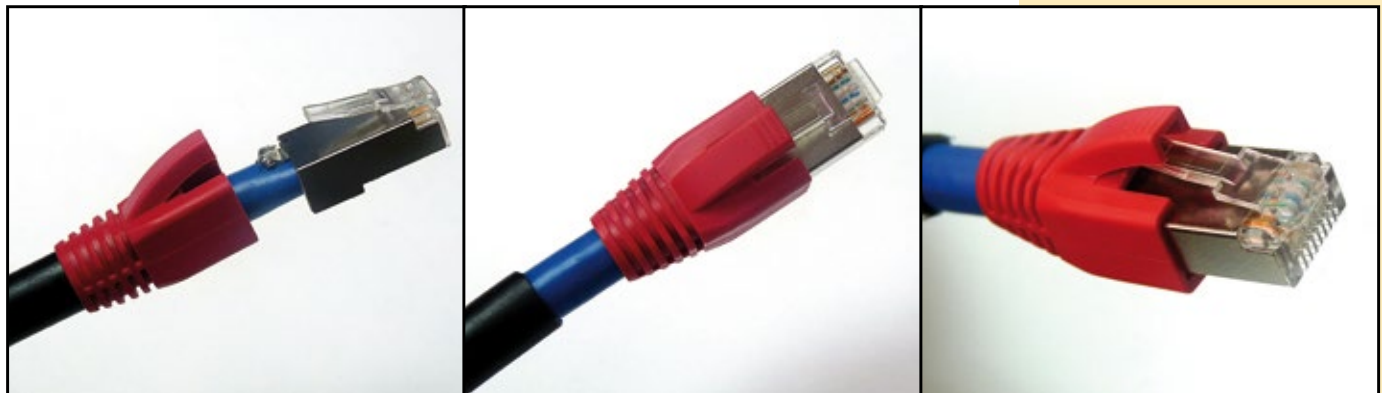
Proceed to crimp the ground lug of the connector with the help of a pair of pliers as shown in **Figure 19**.

**Figure 19****19**

Proceed to solder the wire to the grounding lug and cut the unused part, and level the soldered lug with the jacket so it can enter the boot aperture as shown in the images of **Figure 20**.

**Figure 20****19**

Finally, slide the boot as shown in Images of **Figure 21** to terminate the connection.

**Figure 21**