

LP-F196XX Pivot™ type Rack Mounted Optical Distribution Frame (ODF) for up to 288 fiber cores

LPF196XX_PFD_ENB01W

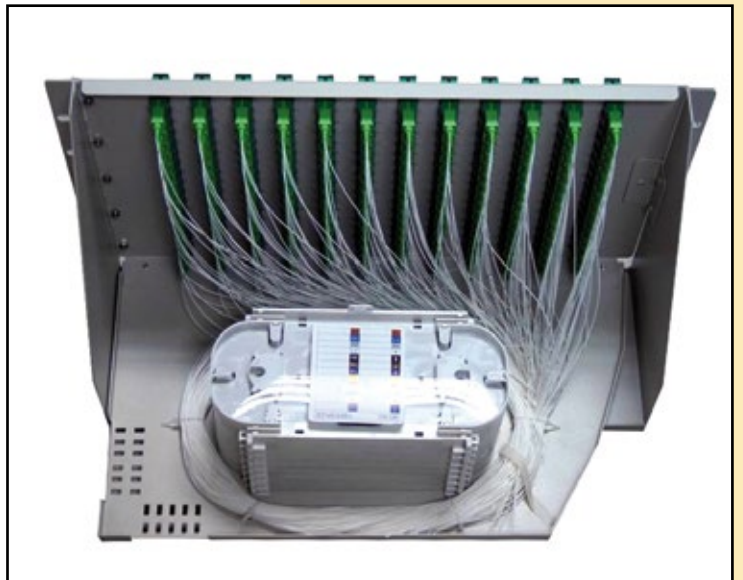
Features:

- 19" Standard size, Suitable for ribbon and single fiber.
- Various panel plate to fit different adapter interface.
- Front mark on the plate is easy for identification and operation.
- 48C, 72C, 96C, 144C, 288C. Optional, with or without fiber optic pigtailed adapters.
- Material: Outer shell is Cold-roll steel; Inside ABS material splice tray.
- 6pcs splice trays; each splice tray 24 cores.
- Capacity: up to 144 SC (288 w/LC duplex) cores.

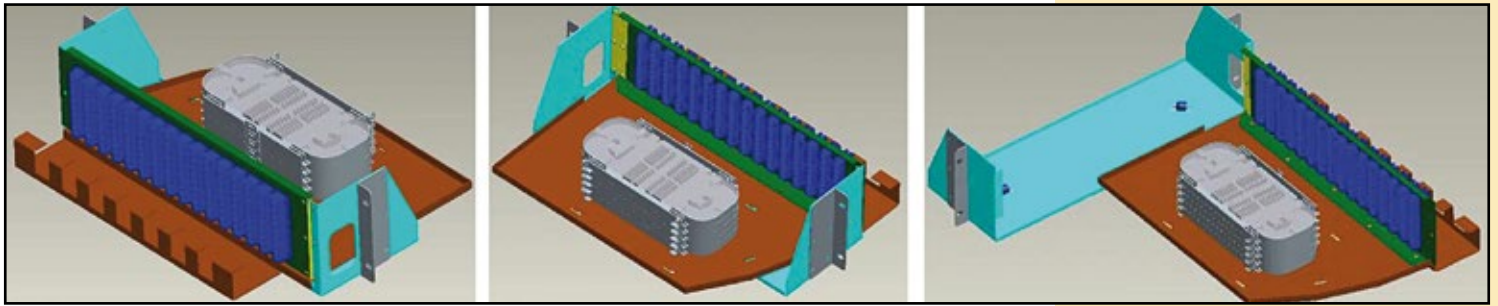


LP-F196XX Pivot™ type Rack Mounted Optical Distribution Frame (ODF) for up to 288 fiber cores

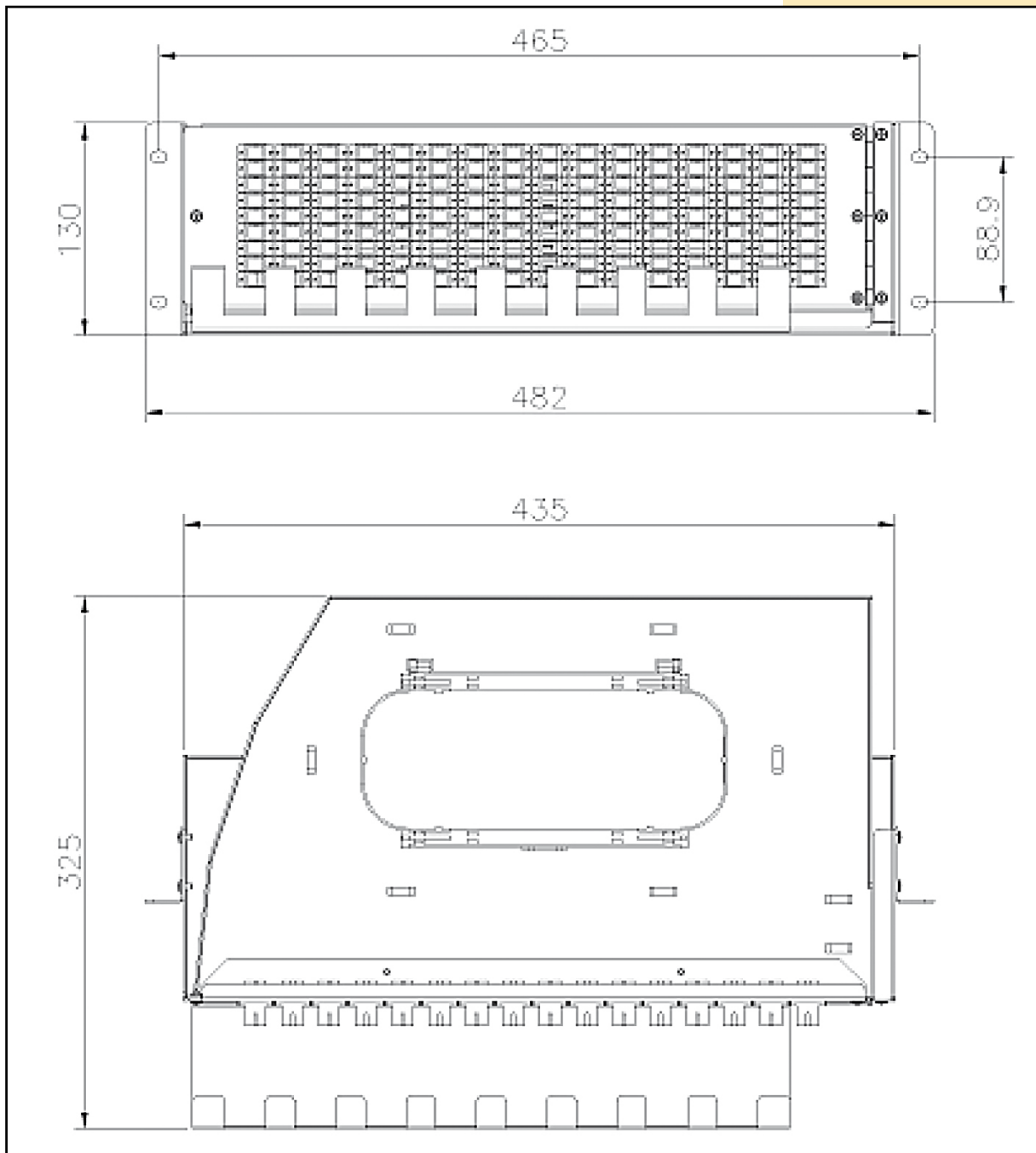
Pivot™ Series is a family of high density ODF's. It is made of cold roll steel, splice tray can be rotated out. It could be pre-installed with various kinds of fiber optic adapters and pigtailed. It is ideal for indoor fiber optic cables connection storage, distribution and management. Typically used on over 96 ports installations. With LC duplex capacity can be doubled.

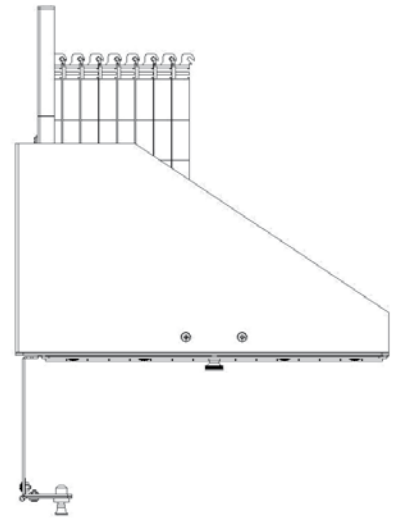
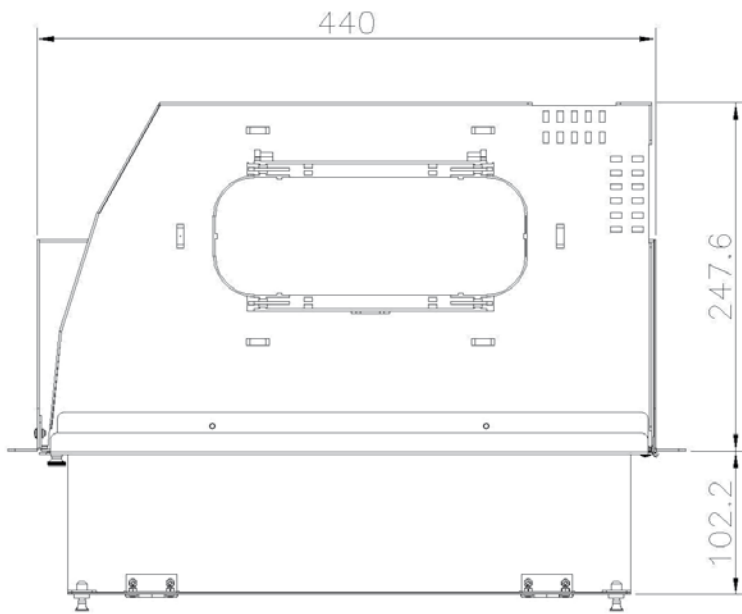
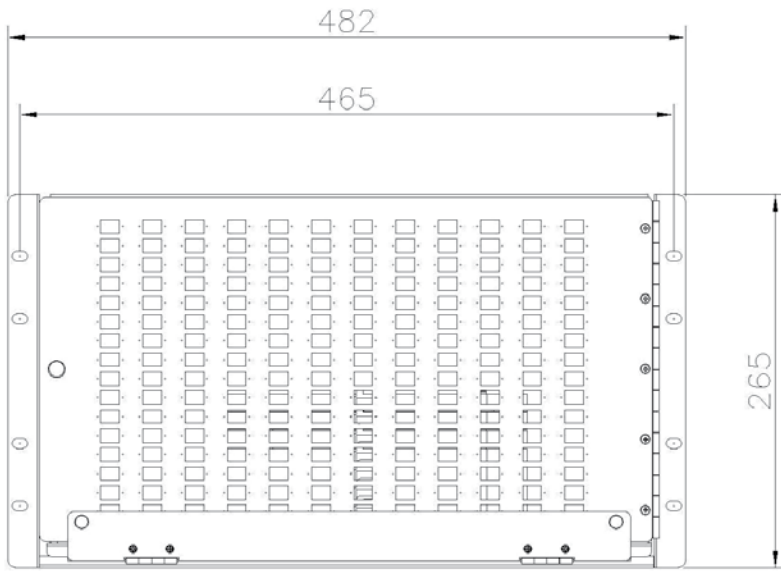


A Dimensional Drawing:



Average Dimensions depends on configuration





B How to Order:

LP-F196CCCFAAPH

LP-F196	CCC	F
Fiber Optic Wall Cabinet (Box) or Patch Panel rack mounted Loaded Pivot Series.	Cores 048-288	Fiber type S = Single Fiber R = Ribbon Fiber
AA	P	H
Adaptor Panel 00 Without adaptors 01 ST Thread Type 02 ST Flange Type 03 ST Duplex Type 04 FC/PC Metal Square Type 05 FC/PC Metal D Type 06 FC/PC Flange Type 07 SC Simplex Type 08 SC Duplex Type 09 ST to FC Hybrid Type 10 ST to SC Hybrid Type 11 FC to SC Hybrid Type 12 ST to SC Duplex Type 13 MTRJ Type 14 LC Duplex Square Type 15 LC Simplex Type 16 LC Duplex Footprint Type 18 SC Flangeless Type 19 SC Duplex Flangeless Type 20 SC Quad Flangeless Type XX Mixed Adaptor Type	Polish grade 1 = UPC polish, RL>50dB Blue Color Connector 2 = APC polish, RL>60dB Green Color Connector 3 = PC Polish , RL > 20dB Blue Color Connector 4 = SPC polish, RL>40dB Blue Color Connector	Height 1U = 1U 2U = 2U 3U = 3U 4U = 4U 5U = 5U 6U = 6U

Example:

LP-F196048S1411U Pivot Series Fiber Optic Patch Panel rack mounted loaded with 48 LC Duplex / UPC polish adapters 1U height.