

## LP-F184DBKYY 48 Port Rack Mounted Optical Distribution Frame (ODF) Unloaded.

LPF184DBKYY\_SS\_ENB01W

### Features

- The chassis is made of hardened steel & insulation materials, thus having excellent mechanical and electrical performance, it is a solid and durable equipment.
- Number of Adapter ports (Not included): 48 ports.
- Holds up to six (6) 160 x 25.5 mm adaptor panels.
- Strength member core clamp and shell insulated and with grounding lead.
- SC, FC, ST or LC adaptors panels available in separate order as unloaded or loaded.
- Reliable fiber lead grounding and perfect fix up.
- Reliable pigtail enclosure for protection and organization.
- For extensive field applications.
- Convenient for fiber distribution, its operation and maintenance.



### LP-F184DBKYY 48 Port Rack Mounted Optical Distribution Frame (ODF) Unloaded.

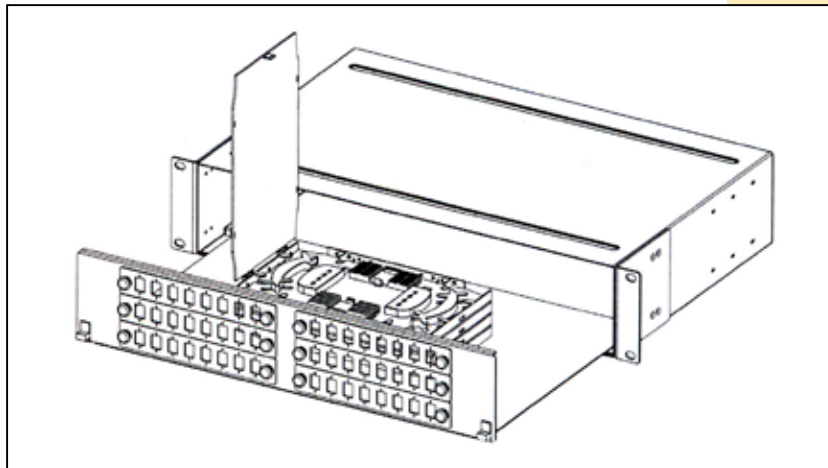
The 48 port Optical Distribution Frame (ODF) is designed as a reliable fiber optic organization and distribution product, it is of the sliding type, convenient for operations and maintenance. The 48 port ODF has wide operation temperature range and made for high density fiber optic installations.

No panels included, the user can buy them separately in order to configure it as per the design needs.

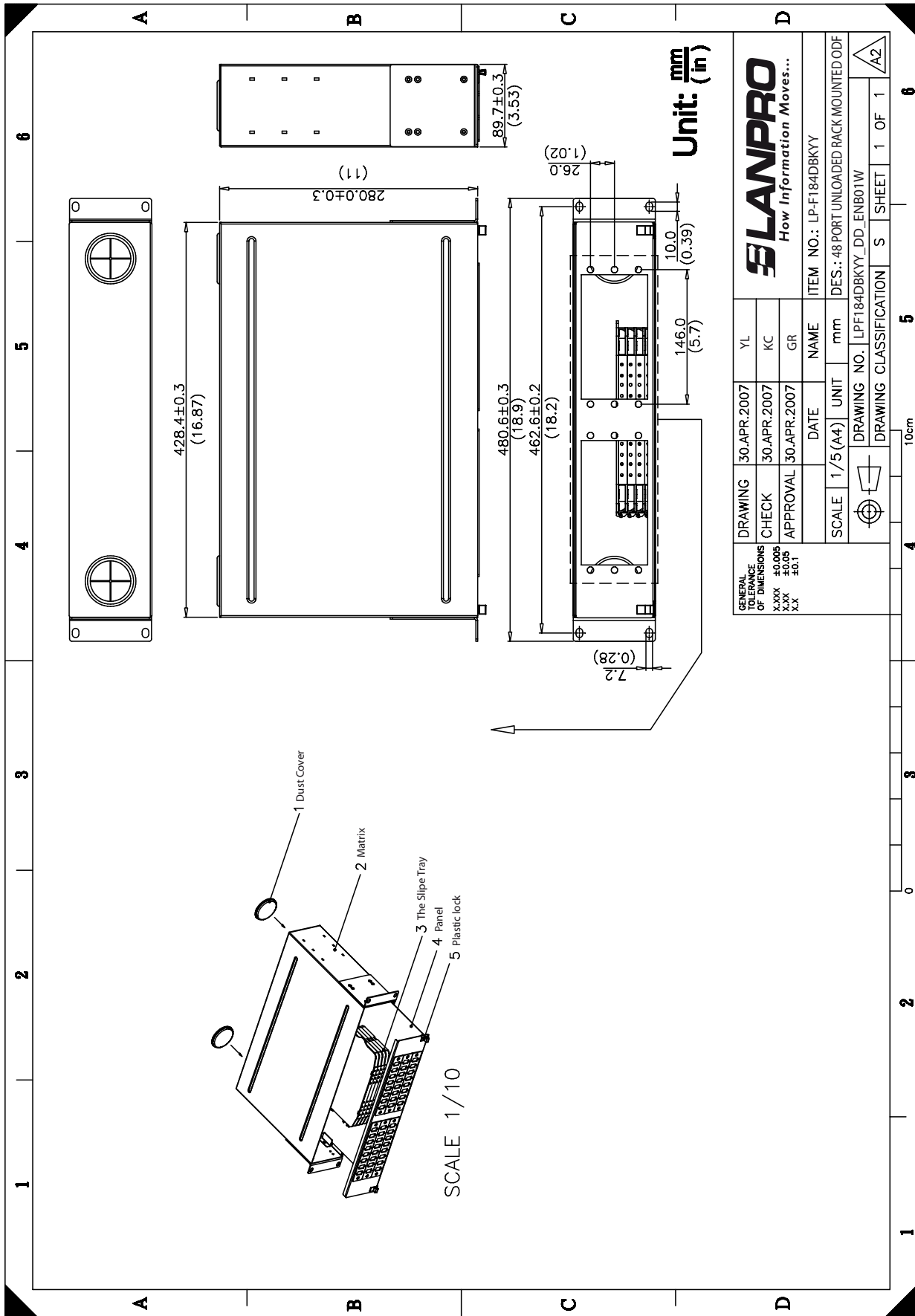


**A 48 Port Rack Mounted Optical Distribution Frame (ODF) Specifications.**

- Dust covers: PVC
- Chassis(Matrix): 1.2 mm thickness SPCC
- Splice tray: 4 Sets ABS+PC UL 94V-0
- Panel: 1.2 mm Thickness SPCC
- 6 places for 160 x 25.5 mm adaptor panels
- Paint: Black Painted
- Weight: 4.2 Kg
- Dimensions: 3.4" x 19" x 11" (89.7 x 480.4 x 280 mm)
- Plastic Lock: 2 pieces ABS UL 94-HB
- Environment temperature: -40°C ~+80°C.
- Relative humidity: ≤85% (30°C).
- Atmospheric pressure: 70~106KPa.
- Insulation Resistance:  $\geq 2 \times 10 \text{M}\Omega / 500\text{V}$  (DC).
- Voltage withstand capability  $\leq 15\text{kv}$  (DC) /1min no spark-over and no flying arc.
- Fiber bending radius guaranteed:  $\geq 40\text{mm}$ .
- Application: Fiber distribution for terminating and distributing fiber optic cables in an organized and convenient way.
- Duct and direct buried.
- It can appropriately protect fiber connectors.



**B Dimensional Drawing**



<b>LANPRO</b> How Information Moves...		YL	30.APR.2007
KC	30.APR.2007	GR	30.APR.2007
NAME	DATE	UNIT	1/5 (A4)
ITEM NO.: LP-F184DBKYY	DES.: 48 PORT UNLOADED RACK MOUNTED ODF	DRAWING NO.	LPF184DBKYY_DD_ENB01W
DRAWING CLASSIFICATION	S	SHEET	1 OF 1

10cm

**C** How to Order:

**LP-F184DBKYY 48 Port 19" Rack Mounted Optical Distribution Frame (ODF) Unloaded.**