

LP-CPCAUSBK Performax® (Back to Back Connectors) 8P8C Inline Coupler CAT 6A Keystone Jack type, black color, Unshielded

LPCPCAUSBK_SS_ENB01W

Features

- Compliant with ANSI/TIA 568.2-D CAT 6A requirement.
- Compliant with IEC60603-7 dimension & reliability requirement.
- Ideal to be used on LanPro iMC® line of patch panels.
- LanPro legendary quality on 10GB+ networks.



LP-CPCAUSBK Performax® (Back to Back Connectors) 8P8C Inline Coupler CAT 6A Keystone Jack type, black color, Unshielded

This stand-alone RJ45 device provides a Female-to-Female feed-through connection.

It meets Category 6A Performax® performance requirements. It also adds the individual length of two Category 6A Performax® patch cables with a minimum decrease in channel performance.

Capable of handling LAN frequencies in excess of 500 MHz, this coupler meets TIA/EIA 568.2-D specifications.

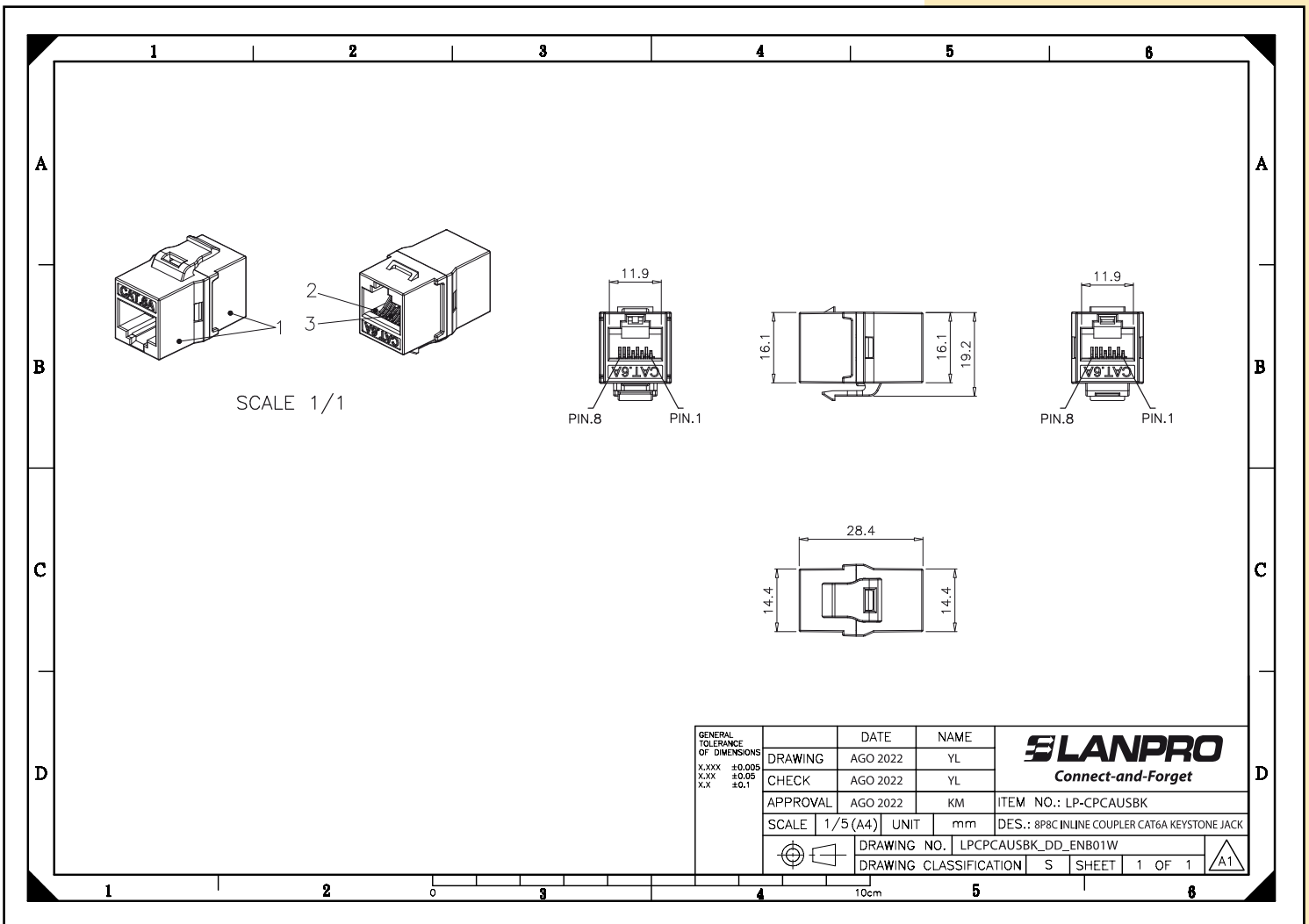
Used in straight RJ45 CAT 6A data applications.

A Specifications

Material	Plastic Housing	ABS+PC, UL 94V-0 black color
	Contact Bracket	PBT + Glass fiber, UL94V, black color
	RJ45 Jack Contact	Material: Phosphor bronze with nickel plating
		Gold plating: 50 micro inch gold plating on surface of plug contact area
PCB	FR4, UL94V-0	
Performance	Life (mating cycles)	Min. 750 cycles
	Mating & Unmating force	Max. 20N
	Retention strength	7.7 kg between Jack & plug
	Operating temperature	-10°C to 60°C

Note: The mated plug should compliant with IEC60603-7 requirement

B Dimensional drawing



C How to order

**LP-CPCAUSBK Performax® (Back to Back Connectors) 8P8C Inline Coupler CAT 6A
Keystone Jack type, black color, Unshielded.**