

LP-CPCAFSNP - Performax® (Back to Back Connectors) 8P8C Inline Coupler CAT 6A Keystone Jack type, Fully Shielded, Nickel Plating color.

LPCPCAFSNP_SS_ENB01W

Features

- Shielded metal housing minimizes ANEXT and Crosstalk
- Connect UTP or STP straight-pinned cables.
- Ideal to be used on LanPro iMC® line of patch panels.
- LanPro legendary quality on 10GB+ networks.



LP-CPCAFSNP Performax® (Back to Back Connectors) 8P8C Inline Coupler CAT 6A Keystone Jack type, Fully Shielded, Nickel Plating color

This stand-alone RJ45 device provides a Female-to-Female feed-through connection.

It meets Category 6A Performax® performance requirements. It also adds the individual length of two Category 6A Performax® patch cables with a minimum decrease in channel performance.

Capable of handling LAN frequencies in excess of 500 MHz, this coupler meets TIA/EIA 568-C.2 specifications and is Power Sum Certified.

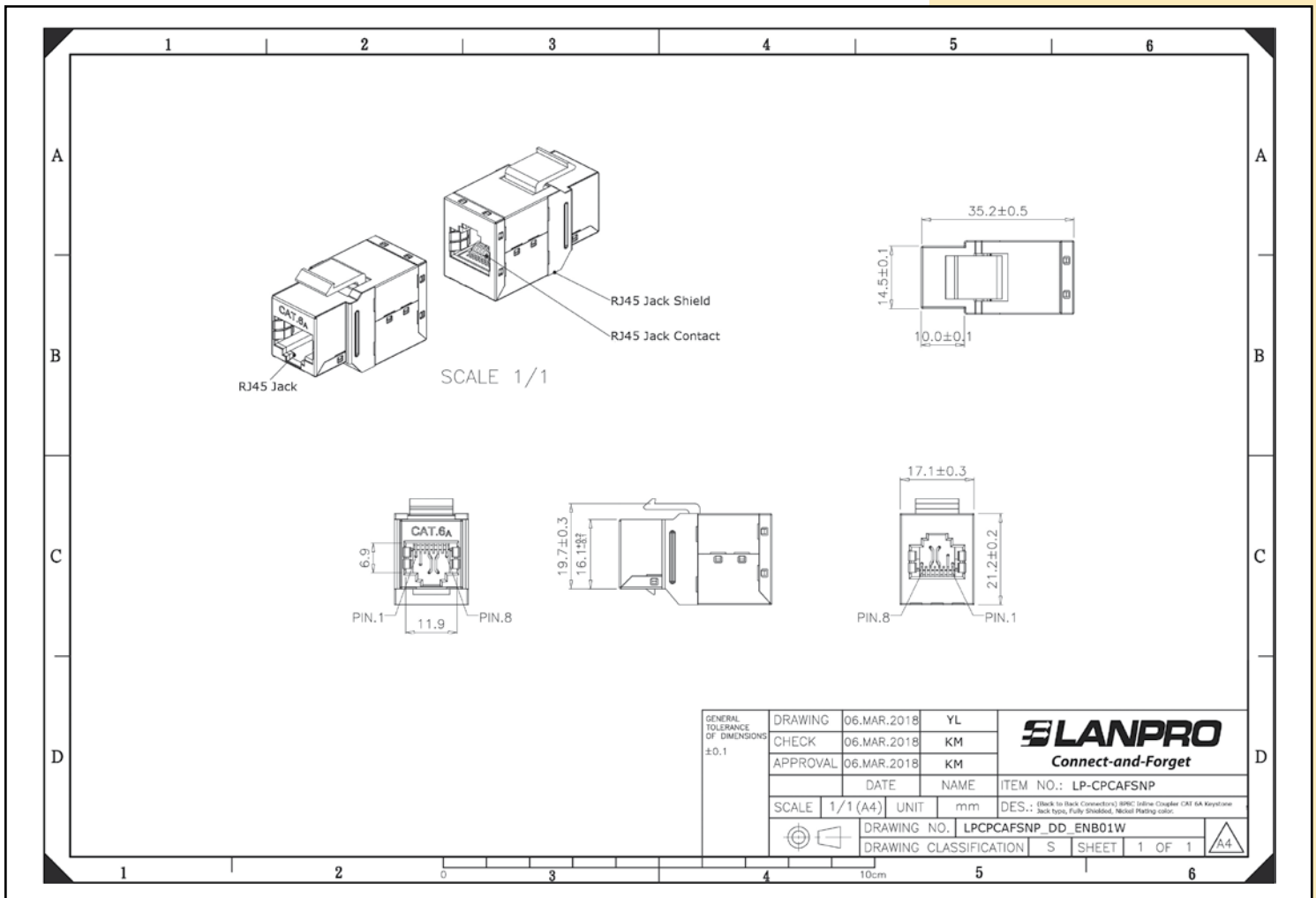
Used in straight RJ45 CAT 6A data applications.

A Specifications

Material	RJ45 Jack	Housing: ABS+PC, UL 94V-0 Black color
		Contact bracket: PC, UL 94V-2, Transparent color
	RJ45 Jack Shield	Bronze, Nickel plated
	RJ45 Jack Contact	Material: Phosphor Bronze with Nickel Plated
		Finish: 50 micro-inch Gold Plated on Plug contact area
	PCB	FR4, UL 94V-0
Performance	Insertion Force	30N max. (IEC 60603-7-5)
	Retention strength	7.7kg between Jack and Plug
	Operating temperature	-10°C to 60°C (ISO/IEC 11801, ANSI/TIA/EIA 568 C.2)
	Life (mating cycles)	Jack: 750 cycles min. (ISO/IEC 11801, IEC 60603-7-5)

Note: CAT 6A channel transmission performance is in compliance with TIA/EIA 568 C.2 10G & ISO/IEC 11801 standard

B Dimensional Drawings



D How to Order

**LP-CPCAFSNP Performax® (Back to Back Connectors) 8P8C Inline Coupler CAT 6A
Keystone Jack type, Fully Shielded, Nickel Plating color.**