

## LP-CPCECC (Back to Back Connectors) 8P8C Inline Coupler CAT 5e.

LPCOPLERCAT5E\_SS\_ENB01W

### Features

- ETL verified to TIA/EIA 568-B.2 CAT 5e.
- UL and CSA approved.
- 568-B.2 compatible.
- Rugged construction.
- Two colors to choose from: black or white.
- High performance copper alloy contacts, 50 micro-inches gold-plated.
- Material: ABS UL94V-0.
- Unshielded.
- Excellent prices.



## LP-CPCECC (Back to Back Connectors) 8P8C Inline Coupler CAT 5e.

This stand-alone RJ45 device provides a Female-to-Female feed-through connection.

It meets Category 5e performance requirements. It also adds the individual length of two Category 5e patch cables with a minimum decrease in channel performance.

Capable of handling LAN frequencies in excess of 100 MHz, this coupler meets TIA/EIA 568-B.2 specifications and is Power Sum Certified.

Used in straight RJ45 CAT 5e data applications.

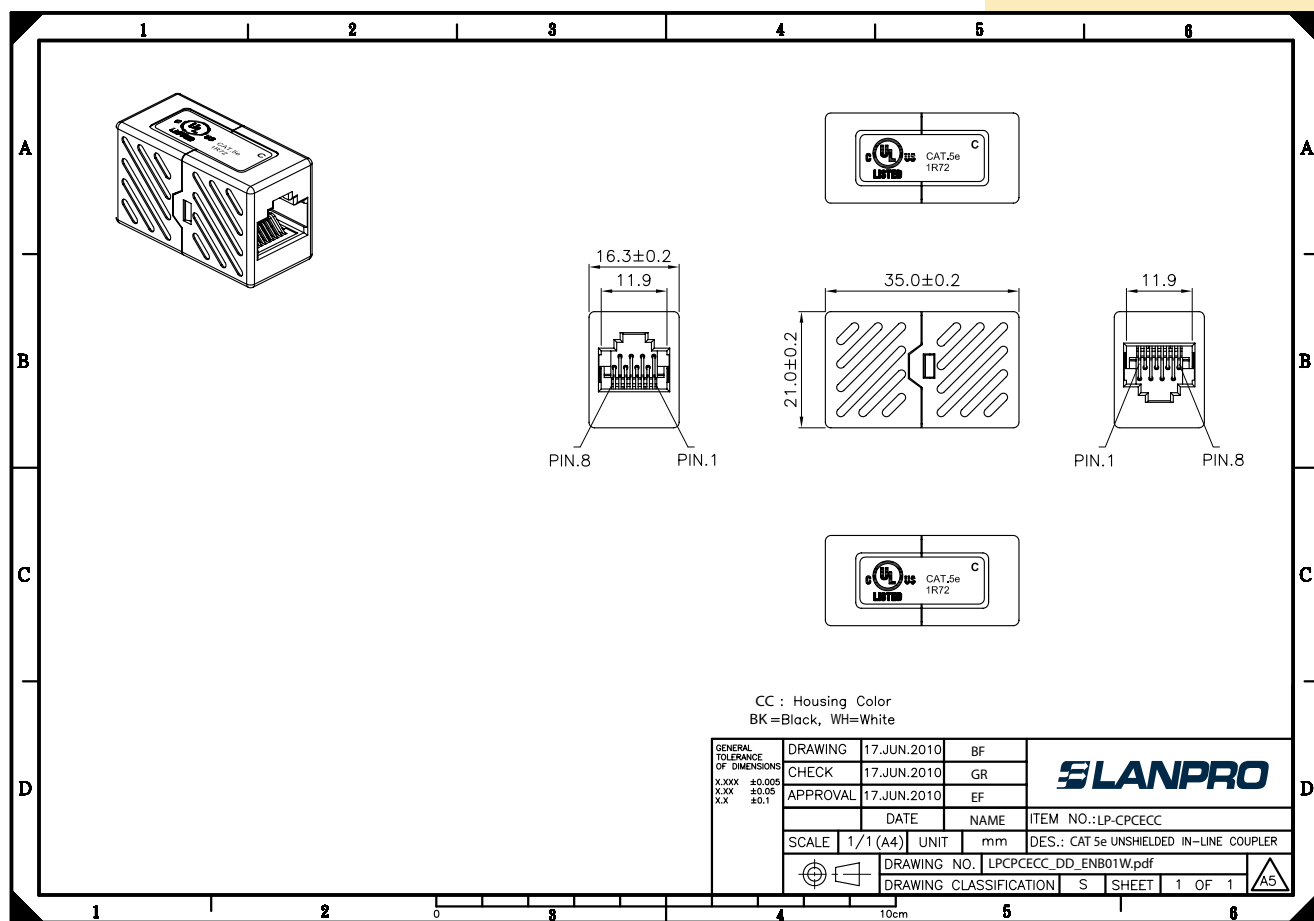
**A Specifications**

Insertion Force	20 N max. (IEC 60603-7-4).
Retention Strenght	7.7 Kg between jack and plug.
Operating Temperature	-10°C to 60°C (ISO/IEC 11801, ANSI/TIA/EIA 568-B.2).
Life (mating cycles)	750 cycles min. (ISO/IEC 11801, IEC 60603-7-4).
Complies with transmission performance as per the ANSI/TIA/EIA 568-B.2 standard.	
<b>Material:</b>	
1.- RJ45 Jack	
1.1.- Housing:	ABS UL 94V-0, with optional color.
1.2.- Contact Bracket:	PC, UL 94V-2, transparent color.
2.- RJ45 Jack Contact	
2.1.- Material:	Phosphor bronze with nickel-plated finish.
2.2.- Finish:	High performance copper alloy contacts, 50 micro-inches of gold.
3.- PCB: FR4, UL 94V-0	



Modular coupler jacks are available in Category 6, Category 5e, and Category 3. Modules are designed to connect patch cords or line cords in series without reducing the performance of the link/channel. The coupler can be mounted in any standard keystone-style opening.

**B Dimensional Drawings**



**C How to order**

■ **LP-CPTCC**

<b>CP</b>	<b>T: Type</b>	<b>CC: Color</b>
<b>CP</b> = Inline Coupler	<b>CE</b> = CAT 5e	<b>WH</b> = White
		<b>BK</b> = Black

e.g.

\* **LP-CPCEWH** (Back to Back Connectors) 8P8C Inline Coupler CAT 5e White.

\* **LP-CPCEBK** (Back to Back Connectors) 8P8C Inline Coupler CAT 5e Black.