

## LP-CPCTCC (Back to Back Connectors) 6P6C Inline Coupler Telephony and CAT 3.

LPCOUPLERCAT3\_SS\_ENB01W

### Features

- UL and CSA approved.
- RJ11, RJ14 and RJ25 6P6C.
- Rugged construction.
- High performance copper alloy contacts, 50 micro-inches gold-plated.
- Two colors to choose from: black or white.
- Material: ABS UL94V-0.
- Unshielded.
- Very good price.



## LP-CPCTCC (Back to Back Connectors) 6P6C Inline Coupler Telephony and CAT 3

LanPro CAT 3 couplers are perfect for temporary extensions or in wall applications.

This stand-alone 6P6C device for RJ11, RJ14 or RJ25 provides a Female-to-Female feed-through connection.

It meets Category 3 performance requirements. It easily adds the individual length of two Category 3 patch cables with a minimum impact in channel performance.

PCB based so the signal degradation is minimal.

Used in straight RJ11, RJ14 and RJ25 CAT 3 data applications.

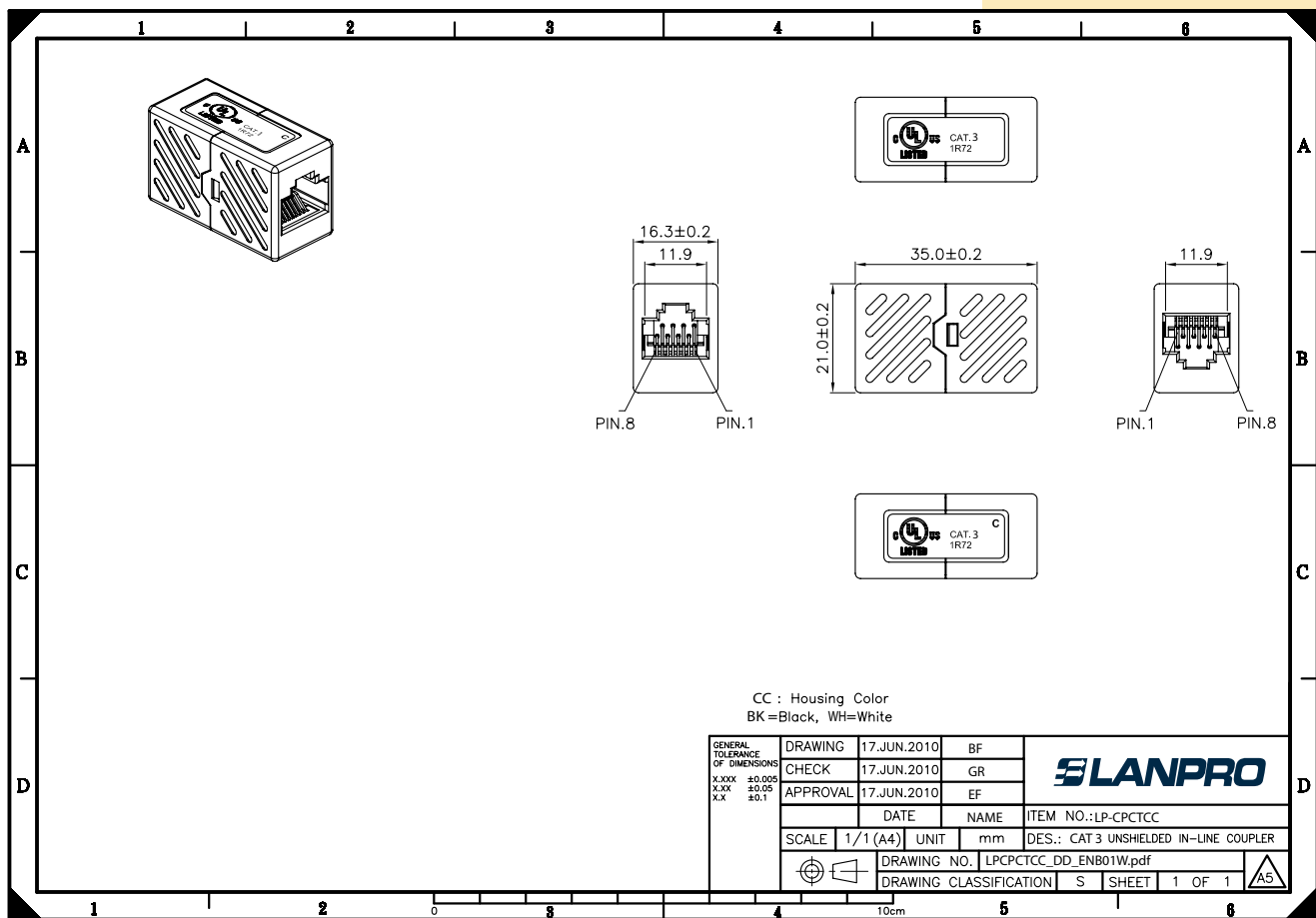
**A Specifications**

Insertion Force	20 N max. (IEC 60603-7-4).
Retention Strength	7.7 Kg between jack and plug.
Operating Temperature	-10°C to 60°C.
Life (mating cycles)	750 cycles min. (ISO/IEC 11801, IEC 60603-7-4).
Complies with transmission performance as per the ANSI/TIA/EIA CAT 3 standard.	
<b>Material:</b>	
1.- 6P6C RJ25 Jack (compatible with RJ11 and RJ14)	
1.1.- Housing:	ABS UL 94V-0, with optional color.
1.2.- Contact Bracket:	PC, UL 94V-2, transparent color.
2.- 6P6C RJ25 Jack Contact (compatible with RJ11 and RJ14)	
2.1.- Material:	Phosphor bronze with nickel-plated finish.
2.2.- Finish:	High performance copper alloy contacts, 50 micro-inches of gold.
3.- PCB: FR4, UL 94V-0	



Modular coupler jacks are available in Category 3. Modules are designed to connect patch cords or line cords in series without reducing the performance of the link/channel. The coupler can be mounted in any standard keystone-style opening.

**B Dimensional Drawings**



**C How to order**

▣ **LP-CPTCC**

<b>CP</b>	<b>T: Type</b>	<b>CC: Color</b>
<b>CP</b> = Inline Coupler	<b>CT</b> = CAT 3 and telephony	<b>WH</b> = White <b>BK</b> = Black

e.g.

\* **LP-CPCTWH** (Back to Back Connectors) 6P6C Inline Coupler Telephony and CAT 3 White.

\* **LP-CPCTBK** (Back to Back Connectors) 6P6C Inline Coupler Telephony and CAT 3 Black.