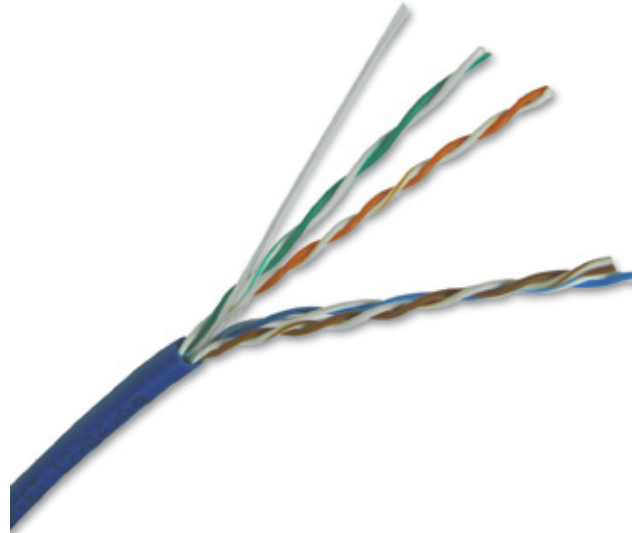


**LP-CE010BLB LanPro Reliable® CAT 5e U/UTP Network Cable, CM-rated,
UL verified with Solid Copper Conductors, Blue Jacket,
1000 ft (305 m) REELEX II® Easy-Pull Box.**

LPCE010BLB_SS_ENB01W

Features

- CM rated for Commercial applications.
- Specified and tested to well over 100 MHz.
- Lower bit error rate increases network efficiency and uptime.
- Very flexible, reduces installation costs and maintenance.
- Superior performance to traditional designs.
- 568-A and 568-B compatible.
- Reliable® CAT 5e is a robust product.
- Exceeds ANSI/TIA-568-C.2, ISO/IEC 11801, UL 1685 (UL1581, Sec. 1160), CSA FT1
- RoHS
- Backward compatible with CAT 5 and CAT 3 systems.
- Excellent price/performance ratio.
- Available in blue color. Others upon request.
- 4 pairs 24 AWG UTP cable.
- Packaged in one convenient presentation: 1000 feet (305 ± 1.5m) pull box.
- Approximate weight: 28lb (12.5Kg)
- Operation voltage: ≤48 Vrms.
- UL E329019



**LP-CE010BLB LanPro Reliable® CAT 5e U/UTP Network Cable,
CM-rated, UL verified with Solid Copper Conductors, Blue
Jacket, 1000 ft (305 m) REELEX II® Easy-Pull Box.**

Unshielded Reliable® CAT 5e U/UTP Network CM-rated Cable is the answer given by LanPro to the demand imposed by today's high performance applications at reasonable prices. Tested to well over 100 MHz, the guaranteed performance of this cable meets the ANSI/TIA-568-C.2, ISO/IEC 11801, UL 1685 (UL 1581, Se. 1160) and CSA FT1 requirements, making it ideal for transmission links supporting today's networking protocols.

UL E329019 for CM Commercial applications, the unshielded LanPro Reliable® CAT 5e U/UTP Network Cable is available for immediate delivery in blue color. Other colors available under request.

A

Applications

Category 5e U/UTP cable is intended for high speed data applications, including 100BASE-TX and 4/16 Mb/s Token Ring, to be used in riser installations which rise between floors. Riser cables may also penetrate other fire rated walls or floors.

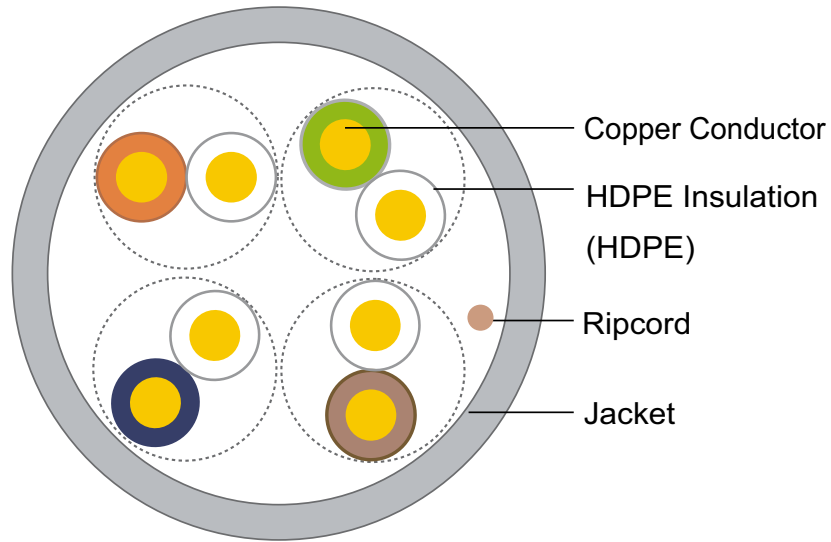
B Specifications

Mechanical		
Conductor	Material	Soft Annealed bare Copper
	Construction [mm]/[inch]	0.490±0.005
	Size [AWG]	24 AWG
Insulation	Material	HDPE
	Diameter [mm]	0.87 + 0.03
	Colors	Blue/White-Blue
		Orange/White-Orange
Green/White-Green		
Brown/White-Brown		
Jacket	Material Rating	CM
	Nominal thickness [mm]	0.5 + 0.04
	Surface	Limpia Lisa
	Diameter [mm]	5.0 + 0.2
	Color	Azul
Surface Printing	Letter Height [mm]	3.00 + 0.3
	Color	Black
	Printer error & Space	≤0.5% , 1 m
Packaging	Type	Carton
	Dimensions	35,56cm x 26,04cm x 34,29cm
	Packing Length[m]	305±1.5
Rip Cord	Included	
Standards	ANSI/TIA-568-C.2, ISO/IEC 11801, UL 1685 (UL1581, Sec. 1160), CSA FT1, RoHS, UL E329019	
Jacket Physical Characteristics	Tensile Strength Before Aging [Mpa]	≥13.5
	Elongation Before Aging [%]	≥150
	Aging Period [°Cxhrs]	100°Cx24hx7d
	Tensile Strength after aging [Mpa]	≥12.5
	Elongation after aging [%]	≥125
	Cold Bend (-20±2°Cx4h)	8xCable O.D. No visible cracks
Electrical		
AT 20°C	Impedance[1.0 - 100 MHz[Ω]	100±15
	Delay Skew[1.0 - 100 MHz[Ω]	≤45
	Resistance [Ω/100m @ 20°C]	Max. 9.5
	Resistance Unbalance	Max. 5%
	Capacitance Unbalance	Max. 330pF/100m (328ft)
	Mutual Capacitance	Máx. 560pF/100m
	Propagation delay	537.6 ns/100 m max. @ 100 MHz
	Test Voltage (1 min)	1.5KV /1 min (DC)
	Insulation Resistance	≥5000MΩ Km (DC500V Charged 1 min)
	Operating Voltage	48 Vrms
Physical		
	Operating Temperature	-20°C to 75°C
	Installation Temperature	0°C to 50°C
	Storage Temperature	-20°C to 75°C

C Certification Specifications

Item f [MHz]	RL >dB/100m	Attenuation >dB/100m	NEXT >dB/100m	Phase Delay ≤ns	PSNEXT >dB/100m	ELFEXT >dB/100m
1	20.0	2.0	65.3	570.00	62.3	60.8
4	23.0	4.1	56.3	552.00	53.3	48.8
8	24.5	5.8	51.8	546.73	48.8	42.7
10	25.0	6.5	50.3	545.38	47.3	40.8
16	25.0	8.2	47.2	543.00	44.4	36.7
20	25.0	9.3	45.8	542.05	42.8	34.8
25	24.3	10.4	44.3	541.20	41.3	32.8
31.25	23.6	11.7	42.9	540.44	33.9	30.9
62.5	21.5	17.0	38.4	538.55	27.9	24.9
100	20.1	22.0	35.3	537.60	23.8	20.8

D Construction



E How to Order

LP-CE010BLB LanPro Reliable® CAT 5e U/UTP Network Cable, CM-rated, UL verified with Solid Copper 24 AWG Conductors, Blue Jacket, 1000 ft (305 m) REELEX II® Easy-Pull Box.

LanPro is continuously improving its products and reserves the right to change specifications and availability without prior notice.