

**LP-C6MJ0XXB LanPro Reliable® Unshielded CAT 6 U/UTP Network Cable, LSZH-rated with Solid 100% Copper Conductors AWG 24 and Flexible-X™ Nylon core for symmetry in 1000 ft (305m) Easy Pull-Box.**

LPC6MJ0XXB\_SS\_ENB01W

### Features

- Ultra Flexible.
- Superior performance to traditional designs.
- 568-A and 568-B compatible.
- Exceeds ANSI/TIA-568-C.2, ISO/IEC 11801. Vertical-Tray, CSA FT1 requirements.
- Rugged Construction.
- RipCord included.
- Backward compatible with CAT 5e and CAT 5 systems.
- Excellent price/performance ratio.
- Four (4) AWG 24 Twisted Pairs.
- Flame rating: LSZH thermoplastic cover Jacket with a thickness of 0.55 mm.
- Reliable 6® is a robust product.
- Packaged in one convenient presentation: 1000 feet (305m) Easy-pull Box.
- The Geometry is better with Flexible-X™ technology.
- Operating voltage: <48 Vrms.

### Applications

- Unshielded LanPro Reliable® CAT 6 U/UTP Network LSZH-rated is intended for Gigabit Ethernet, 100BASE-Tx, token-ring, 155 Mbps ATM, 100 Mbps TP-PMD, ISDN, analog (Broadband, Baseband), digital video and Voice over IP (VoIP), it can also be used for Video surveillance IP cameras.



**LP-C6MJ0XXB  
LanPro Reliable® Unshielded CAT 6 U/UTP Network Cable,  
LSZH-rated with Solid 100% Copper Conductors AWG 24  
and Flexible-X™ Nylon core for symmetry in 1000 ft (305m)  
Easy Pull-Box.**

The LP-C6MJ0XXB LanPro Reliable® Unshielded CAT 6 U/UTP Network Cable, LSZH-rated with Solid 100% Copper Conductors AWG 24 with Flexible-X™ Nylon core for symmetry in 1000 ft (305m) Easy-Pull Box is the answer given by LanPro to the large demand imposed by today's high performance applications at reasonable prices.

Tested to well over 250 MHz, the guaranteed performance of this cable meets the ANSI/TIA-568-C.2, ISO/IEC 11801, CSA FT1 requirements, making it ideal for transmission links supporting today's networking protocols.

The unshielded LanPro Reliable® CAT 6 U/UTP Network Cable is available for immediate delivery in blue and gray color, other colors available under request.

Now with "Flexible-X™" construction, Reliable® CAT 6 cable isolates and arranges the pairs throughout the length of the cable, improving field installation as well as performance.



**A Technical Specifications**

<b>Conductor</b>	Material	Copper 100%		
	AWG #	24		
	Nominal Diameter (mm)	0.50	Positive tolerance	+0.005
			Negative tolerance	-0.005
<b>Insulation</b>	Material	HDPE (High Density Polyethylene)		
	Diameter (mm)	0.88±0.05		
	Color	A - Blue, White-Blue B - Orange, White-Orange C - Green, White-Green D - Brown, White-Brown		
<b>Ripcord</b>	Yes			
<b>Separator</b>	Flexible-X™			
<b>Drain wire</b>	None			
<b>Jacket</b>	Thickness	0.55±0.05 mm		
	External diameter (O.D.)	5.5±0.4 mm		
	Surface finish	Clean, FRAP, Satination		
	Material	LSZH Rated, complies RoHS		
	Color	Blue and Gray, other colors under request		
<b>Markings</b>	Type height	3.0±0.3 mm		
	Color	Black		
	Print error & space	≤ ±0.5%, 1m		
<b>Packaging</b>	Wooden Tray & Carton			
	Product length	305 ± 1.5 m		
	Carton Dimensions	According to the requires		
<b>Physical properties</b>	Temperature Range	-20°C to 75°C		
<b>Mechanical characteristics</b>	Tensile strength before Aging (Mpa)	≥13.5		
	Elongation before aging (%)	≥150		
	Aging Period (°C x hours)	100°C x 24 h x 7d		
	Tensile strength after Aging (Mpa)	≥12.5		
	Elongation after aging (%)	≥125		
	Cold Bend (-20±2°Cx4h)	No visible cracks		
	Bending Radius	8x external Dia. during install		
<b>Electrical Properties (20°C)</b>	Impedance (1.0 - 250.0 MHz)	100 ±15 Ohm		
	Delay skew @20°C (1.0 - 250.0 MHz)	≤ 45 ns/100m		
	Maximum DC Resistance @ (20°C)	9.5 Ohm/100 m		
	% Resistance unbalance between conductors (Max)	5 %		

**B Certification**



**Cable ID: LANPRO-CAT6 24AWGG**

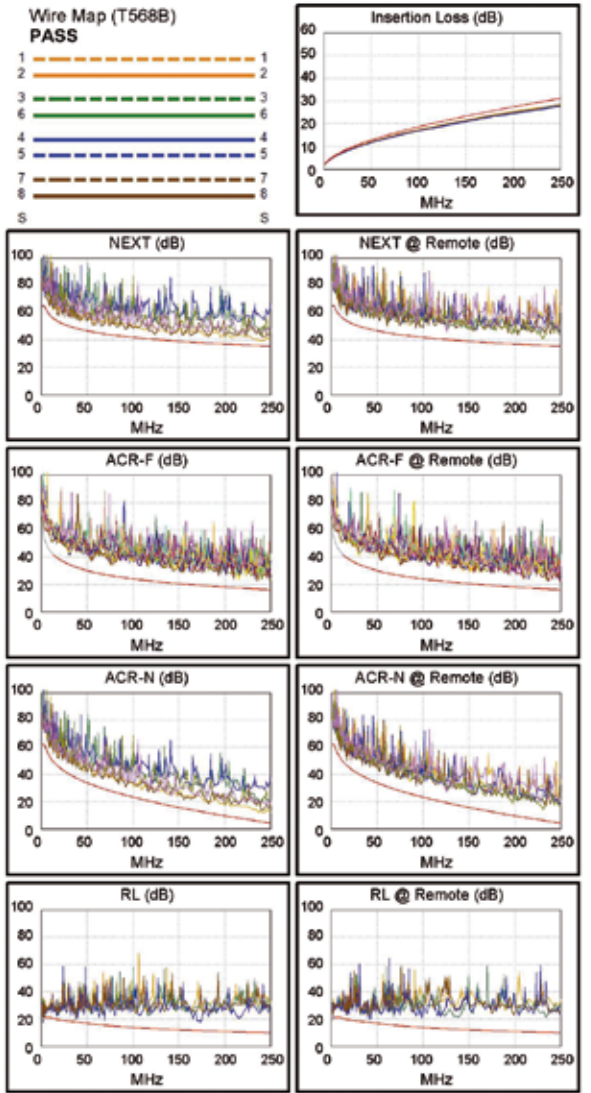
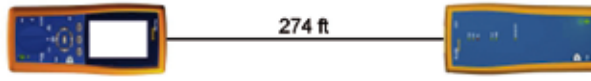
Date / Time: 08/13/2018 02:18:29 PM  
 Headroom 3.7 dB (NEXT 12-36)  
 Test Limit: TIA Cat 6 Perm. Link  
 Cable Type: Cat 6 U/UTP  
 Calibration Date: 06/28/2018

Operator: LANPRO NETWORKS  
 Software Version: 2.7800  
 Limits Version: 1.9500  
 NVP: 69.0%

**Test Summary: PASS**

Model: DTX-1800  
 Main S/N: 9514069  
 Remote S/N: 9514070  
 Main Adapter: DTX-PLA002  
 Remote Adapter: DTX-PLA002

Length (ft), Limit 295	[Pair 45]	274
Prop. Delay (ns), Limit 498	[Pair 12]	420
Delay Skew (ns), Limit 44	[Pair 12]	17
Resistance (ohms)	[Pair 12]	15.3
Insertion Loss Margin (dB)	[Pair 12]	2.5
Frequency (MHz)	[Pair 12]	249.5
Limit (dB)	[Pair 12]	31.1



Worst Case Margin Worst Case Value

PASS	MAIN	SR	MAIN	SR
Worst Pair	12-36	36-78	12-36	36-78
NEXT (dB)	3.7	4.8	3.7	4.8
Freq. (MHz)	240.5	230.5	240.5	230.5
Limit (dB)	35.6	35.9	35.6	35.9
Worst Pair	36	45	36	36
PS NEXT (dB)	3.4	5.5	3.4	6.6
Freq. (MHz)	240.0	61.3	240.0	230.5
Limit (dB)	33.0	42.8	33.0	33.3

PASS	MAIN	SR	MAIN	SR
Worst Pair	45-36	45-36	45-36	45-36
ACR-F (dB)	5.9	6.2	5.9	6.2
Freq. (MHz)	235.0	249.0	235.0	249.0
Limit (dB)	16.8	16.3	16.8	16.3
Worst Pair	78	36	78	36
PS ACR-F (dB)	8.1	7.8	8.2	7.8
Freq. (MHz)	219.5	249.0	248.0	249.0
Limit (dB)	14.4	13.3	13.3	13.3

N/A	MAIN	SR	MAIN	SR
Worst Pair	36-45	36-45	12-36	36-78
ACR-N (dB)	5.5	6.0	6.8	7.8
Freq. (MHz)	18.4	16.9	243.5	230.5
Limit (dB)	46.1	47.0	4.9	6.2
Worst Pair	36	45	36	36
PS ACR-N (dB)	5.7	6.7	7.0	9.6
Freq. (MHz)	17.3	61.3	243.5	230.5
Limit (dB)	44.4	28.6	2.3	3.6

PASS	MAIN	SR	MAIN	SR
Worst Pair	45	45	45	45
RL (dB)	2.5	2.6	6.3	2.6
Freq. (MHz)	17.0	42.8	173.0	42.8
Limit (dB)	19.8	17.7	11.6	17.7

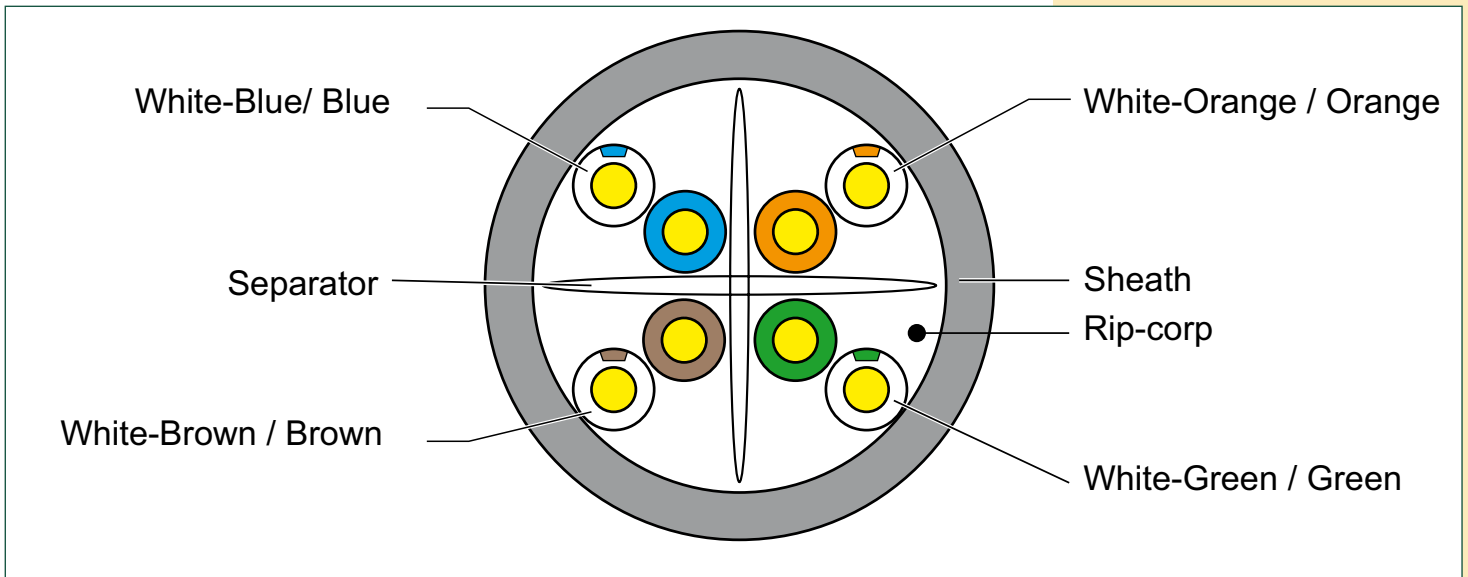
Compliant Network Standards:  
 10BASE-T 100BASE-TX 100BASE-T4  
 1000BASE-T ATM-25 ATM-51  
 ATM-155 100VG-AnyLan TR-4  
 TR-16 Active TR-16 Passive

LinkWare™ PC Version 9.3

**C Certification Characteristics**

Freq.(MHz)	RL > dB	ATT ≤dB	NEXT ≥dB	Retraso ≤ns	PSNEXT > dB	ELFEXT > dB	PSELFEXT ≥ dB
1	19.1	3.0	65.0	570.0	62.0	64.2	61.2
4	21.0	3.5	64.1	552.0	61.8	52.1	49.1
8	21.0	5.0	59.4	546.7	57.0	46.1	43.1
10	21.0	5.5	57.8	545.4	55.5	44.2	41.2
16	20.0	7.0	54.6	543.0	52.2	40.1	37.1
20	19.5	7.9	53.1	542.1	50.7	38.2	35.2
25	19.0	8.9	51.5	541.2	49.1	36.2	33.2
31.25	18.5	10.0	50.0	540.4	47.5	34.3	31.3
62.5	16.0	14.4	45.1	538.6	42.7	28.3	25.3
100	14.0	18.6	41.8	537.6	39.3	24.2	21.2
200	11.0	27.4	36.9	536.5	34.3	18.2	15.2
250	10.0	31.1	35.3	536.3	32.7	16.2	13.2

**D Structure**



**E How to order**

**LP-C6MJ0BLB** LanPro Reliable® Unshielded CAT 6 U/UTP Network Cable, LSZH-rated with Solid 100% Copper Conductors AWG 24 and Flexible-X™ Nylon core for symmetry and blue jacket in 1000 ft (305m) Easy Pull-Box.

**LP-C6MJ0GRB** LanPro Reliable® Unshielded CAT 6 U/UTP Network Cable, LSZH-rated with Solid 100% Copper Conductors AWG 24 and Flexible-X™ Nylon core for symmetry and gray jacket in 1000 ft (305m) Easy Pull-Box.

*LanPro is continuously improving its products and reserves the right to change specifications and availability without prior notice.*