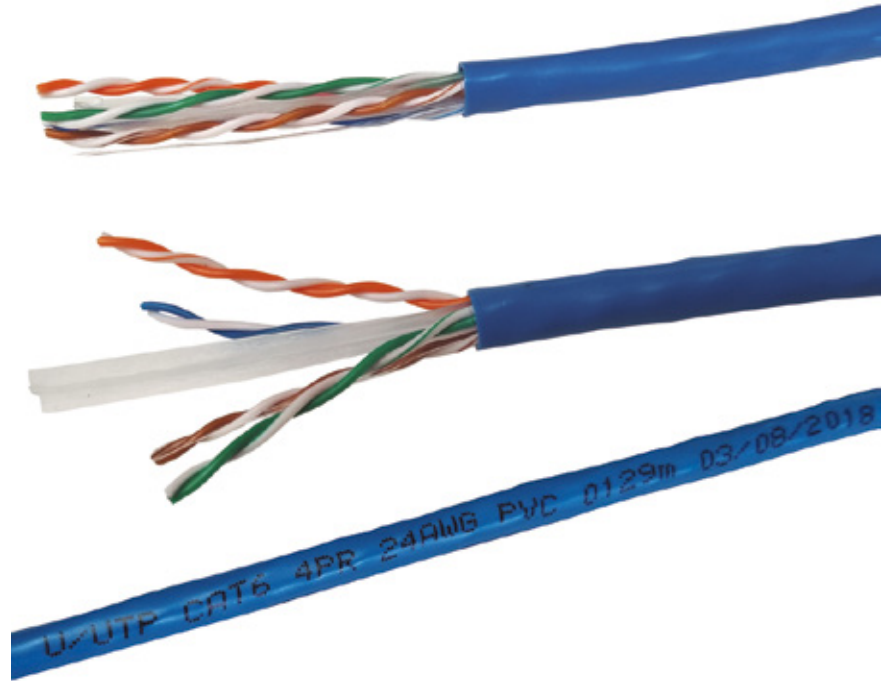


LP-C6M30BLB LanPro Reliable® Unshielded CAT 6 U/UTP Network Cable, CMP-rated with Solid 100% Copper Conductors AWG 24 and Flexible-X™ Nylon core for symmetry and blue jacket in 1000 ft (305m) Easy Pull-Box.

LPC6M30BLB_SS_ENB01W

Features

- Ultra Flexible.
- Superior performance to traditional designs.
- 568-A and 568-B compatible.
- Exceeds ANSI/TIA-568.2-D, ISO/IEC 11801.
- Rugged Construction.
- Ripcord included.
- Backward compatible with CAT 5e and CAT 5 systems.
- Excellent price/performance ratio.
- Blue color jacket.
- Four (4) AWG 24 Twisted Pairs.
- Flame rating: CMP thermoplastic cover Jacket.
- Reliable 6® is a robust product.
- Packaged in one convenient presentation: 1000 feet (305m) Easy-pull Box.
- The geometry is better with Flexible-X™ technology.
- Operating voltage: <48 Vrms.



**LP-C6M30BLB
LanPro Reliable® Unshielded CAT 6 U/UTP Network Cable,
CMP-rated with Solid 100% Copper Conductors AWG 24
and Flexible-X™ Nylon core for symmetry and blue jacket in
1000 ft (305m) Easy Pull-Box.**

The LP-C6M30BLB LanPro Reliable® Unshielded CAT 6 U/UTP Network Cable, CMP-rated with Solid 100% Copper Conductors AWG 24 with Flexible-X™ Nylon core for symmetry and blue jacket in 1000 ft (305m) Easy-Pull Box is the answer given by LanPro to the large demand imposed by today's high performance applications at reasonable prices.

Tested to well over 250 MHz, the guaranteed performance of this cable meets the ANSI/TIA-568.2-D, ISO/IEC 11801, making it ideal for transmission links supporting today's networking protocols.

The unshielded LanPro Reliable® CAT 6 U/UTP Network Cable is available for immediate delivery in blue color, other colors available under request.

Now with "Flexible-X™" construction, Reliable® CAT 6 cable isolates and arranges the pairs throughout the length of the cable, improving field installation as well as performance.

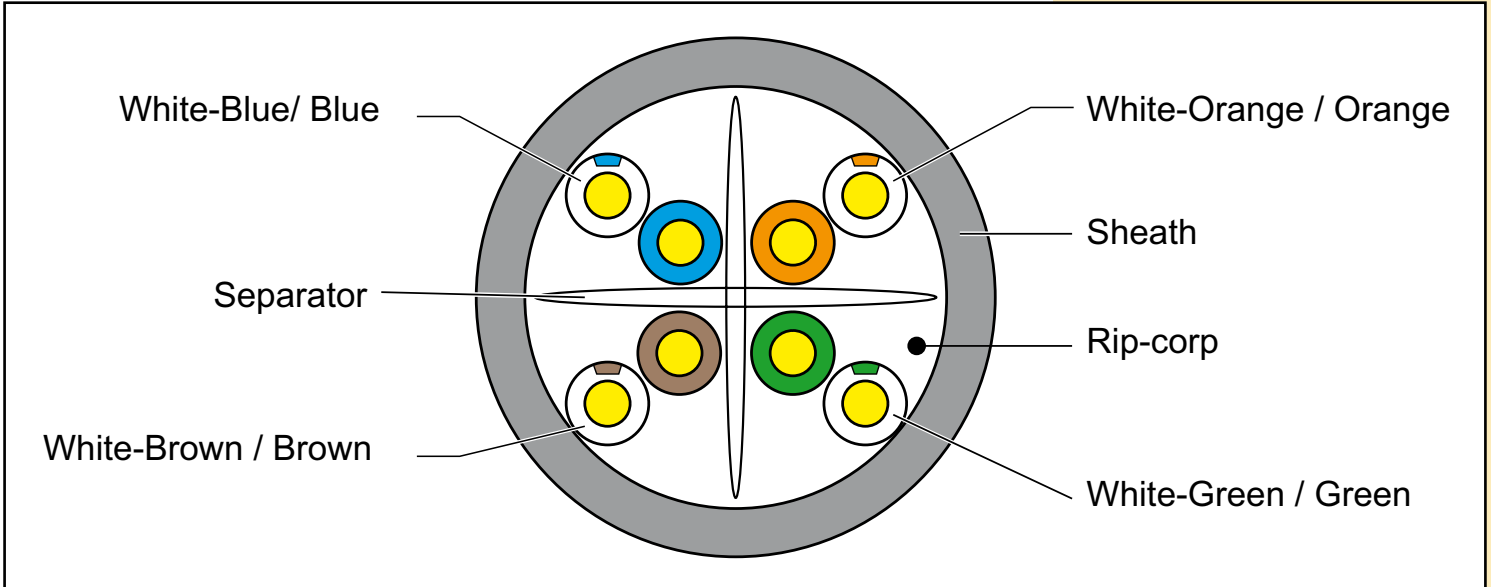
A Applications

Unshielded LanPro Reliable® CAT 6 U/UTP Network CMP-rated is intended for Gigabit Ethernet, 100BASE-Tx, token-ring, 155 Mbps ATM, 100 Mbps TP-PMD, ISDN, analog (Broadband, Baseband), digital video and Voice over IP (VoIP), it can also be used for Video surveillance IP cameras.

B Technical Specifications

Standards	ISO/IEC11801, ANSI/TIA-568.2-D			
Conductor	Material	Copper 100%		
	AWG#	24		
	Nominal Diameter (mm)	0.530	Positive tolerance	+0.005
			Negative tolerance	-0.005
Insulation	Material	HDPE (High Density Polyethylene)		
	Diameter (mm)	0.92±0.08mm		
	Color	A - Blue, White-Blue		
		B - Orange, White-Orange		
		C - Green, White-Green		
D - Brown, White-Brown				
Ripcord	Yes			
Separator	Flexible-X™			
Drain wire	None			
Jacket	Thickness	0.43±0.05 mm		
	External diameter (O.D.)	5.4±0.4 mm		
	Surface finish	Clean, FRAP, Satination		
	Material	CMP Rated, complies RoHS		
	Color	Black		
Markings	Type height	3.0±0.3 mm		
	Color	Blue		
	Print error & space	≤ ±0.5%, 1m		
Packaging	Wooden Tray & Carton			
	Product length	305 ± 1.5 m		
	Carton Dimensions	According to the requires		
Physical properties	Temperature Range	-20°C a 75°C		
Mechanical characteristics	Tensile strength before Aging (Mpa)	≥13.5		
	Elongation before aging (%)	≥150		
	Aging Period (°C x hours)	100°C x 24 h x 7d		
	Tensile strength after Aging (Mpa)	≥12.5		
	Elongation after aging (%)	≥125		
	Cold Bend (-20±2°Cx4h)	No visible cracks		
	Bending Radius	8x external Dia. during install		
Electrical Properties (20°C)	Impedance (1.0 – 250.0 MHz)	100 ±15 Ohm		
	Delay skew @20°C (1.0 – 250.0 MHz)	≤ 45 ns/100m		
	Maximum DC Resistance @ (20°C)	9.5 Ohm/100 m		
	% Resistance unbalance between conductors (Max)	5 %		

C Structure



D Certification Characteristics

Freq.(MHz)	RL > dB	ATT ≤ dB	NEXT ≥ dB	DELAY ≤ ns	PSNEXT > dB	ELFEXT > dB	PSELFEXT ≥ dB
1	19.1	3.0	65.0	521	62.0	64.2	61.2
4	21.0	3.5	64.1	504	61.8	52.1	49.1
8	21.0	5.0	59.4	500	57.0	46.1	43.1
10	21.0	5.5	57.8	498	55.5	44.2	41.2
16	20.0	7.0	54.6	496	52.2	40.1	37.1
20	19.5	7.9	53.1	495	50.7	38.2	35.2
25	19.0	8.9	51.5	495	49.1	36.2	33.2
31.25	18.5	10.0	50.0	494	47.5	34.3	31.3
62.5	16.0	14.4	45.1	492	42.7	28.3	25.3
100	14.0	18.6	41.8	491	39.3	24.2	21.2
200	11.0	27.4	36.9	490	34.3	18.2	15.2
250	10.0	31.1	35.3	490	32.7	16.2	13.2

E How to order

LP-C6M30BLB LanPro Reliable® Unshielded CAT 6 U/UTP Network Cable, CMP-rated with Solid 100% Copper Conductors AWG 24 and Flexible-X™ Nylon core for symmetry and blue jacket in 1000 ft (305m) Easy Pull-Box.