

LP-C6M10BLB LanPro Reliable® Unshielded CAT 6 U/UTP Network Cable, CM-rated with Solid 100% Copper Conductors AWG 24 and Flexible-X™ Nylon core for symmetry and blue jacket in 1000 ft (305m) Easy Pull-Box.

LPC6M10BLB_SS_ENB01W

Features

- Ultra Flexible.
- Superior performance to traditional designs.
- 568-A and 568-B compatible.
- Exceeds ANSI/TIA-568-C.2, ISO/IEC 11801, CSA FT1 requirements.
- Vertical-Tray, CSA FT1 requirements.
- Rugged Construction.
- RipCord included.
- Backward compatible with CAT 5e and CAT 5 systems.
- Excellent price/performance ratio.
- Blue color jacket.
- Four (4) AWG 24 Twisted Pairs.
- Flame rating: CM thermoplastic cover Jacket with a thickness of 0.55 mm.
- Reliable 6® is a robust product.
- Packaged in one convenient presentation: 1000 feet (305m) Easy-pull Box.
- The Geometry is better with Flexible-X™ technology.
- Operating voltage: <48 Vrms.
- ETL No.105135730CRT-001a.

Applications

- Unshielded LanPro Reliable® CAT 6 U/UTP Network CM-rated is intended for Gigabit Ethernet, 100BASE-Tx, token-ring, 155 Mbps ATM, 100 Mbps TP-PMD, ISDN, analog (Broadband, Baseband), digital video and Voice over IP (VoIP), it can also be used for Video surveillance IP cameras.



LP-C6M10BLB LanPro Reliable® Unshielded CAT 6 U/UTP Network Cable, CM-rated with Solid 100% Copper Conductors AWG 24 and Flexible-X™ Nylon core for symmetry and blue jacket in 1000 ft (305m) Easy Pull-Box.

The LP-C6M10BLB LanPro Reliable® Unshielded CAT 6 U/UTP Network Cable, CM-rated with Solid 100% Copper Conductors AWG 24 with Flexible-X™ Nylon core for symmetry and blue jacket in 1000 ft (305m) Easy-Pull Box is the answer given by LanPro to the large demand imposed by today's high performance applications at reasonable prices.

Tested to well over 250 MHz, the guaranteed performance of this cable meets the ANSI/TIA-568-C.2, ISO/IEC 11801, CSA FT1 requirements, ETL registered 105135730CRT-001a, making it ideal for transmission links supporting today's networking protocols.

ETL certified for CM commercial applications, the unshielded LanPro Reliable® CAT 6 U/UTP Network Cable is available for immediate delivery in blue color, other colors available under request.

Now with "Flexible-X™" construction, Reliable® CAT 6 cable isolates and arranges the pairs throughout the length of the cable, improving field installation as well as performance.

A Technical Specifications

Conductor	Material	Copper 100%		
	AWG #	24		
	Nominal Diameter (mm)	0.50	Positive tolerance	+0.005
			Negative tolerance	-0.005
Insulation	Material	HDPE (High Density Polyethylene)		
	Diameter (mm)	0.88±0.05		
	Color	A - Blue, White-Blue B - Orange, White-Orange C - Green, White-Green D - Brown, White-Brown		
Ripcord	Yes			
Separator	Flexible-X™			
Drain wire	None			
Jacket	Thickness	0.55±0.05 mm		
	External diameter (O.D.)	5.5±0.4 mm		
	Surface finish	Clean, FRAP, Satination		
	Material	CM Rated, complies RoHS		
	Color	Blue		
Markings	Type height	3.0±0.3 mm		
	Color	Black		
	Print error & space	≤ ±0.5%, 1m		
Packaging	Wooden Tray & Carton			
	Product length	305 ± 1.5 m		
	Carton Dimensions	According to the requires		
Physical properties	Temperature Range	-20°C to 75°C		
Mechanical characteristics	Tensile strength before Aging (Mpa)	≥13.5		
	Elongation before aging (%)	≥150		
	Aging Period (°C x hours)	100°C x 24 h x 7d		
	Tensile strength after Aging (Mpa)	≥12.5		
	Elongation after aging (%)	≥125		
	Cold Bend (-20±2°Cx4h)	No visible cracks		
	Bending Radius	8x external Dia. during install		
Electrical Properties (20°C)	Impedance (1.0 - 250.0 MHz)	100 ±15 Ohm		
	Delay skew @20°C (1.0 - 250.0 MHz)	≤ 45 ns/100m		
	Maximum DC Resistance @ (20°C)	9.5 Ohm/100 m		
	% Resistance unbalance between conductors (Max)	5 %		

B Certification



Cable ID: LANPRO-CAT6 24AWGG

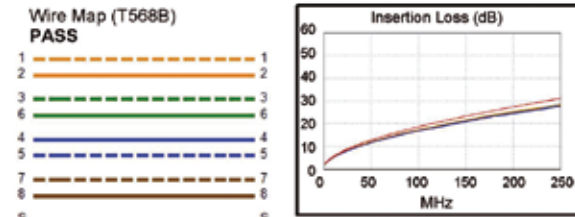
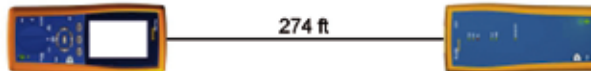
Date / Time: 08/13/2018 02:18:29 PM
 Headroom 3.7 dB (NEXT 12-36)
 Test Limit: TIA Cat 6 Perm. Link
 Cable Type: Cat 6 U/UTP
 Calibration Date: 06/28/2018

Operator: LANPRO NETWORKS
 Software Version: 2.7800
 Limits Version: 1.9500
 NVP: 69.0%

Test Summary: PASS

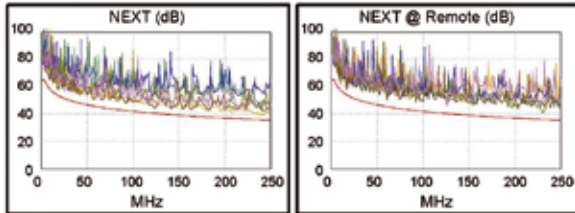
Model: DTX-1800
 Main S/N: 9514069
 Remote S/N: 9514070
 Main Adapter: DTX-PLA002
 Remote Adapter: DTX-PLA002

Length (ft), Limit 295	[Pair 45]	274
Prop. Delay (ns), Limit 498	[Pair 12]	420
Delay Skew (ns), Limit 44	[Pair 12]	17
Resistance (ohms)	[Pair 12]	15.3
Insertion Loss Margin (dB)	[Pair 12]	2.5
Frequency (MHz)	[Pair 12]	249.5
Limit (dB)	[Pair 12]	31.1

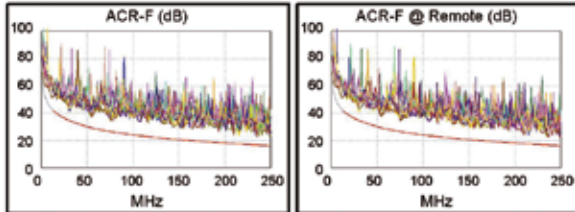


Worst Case Margin Worst Case Value

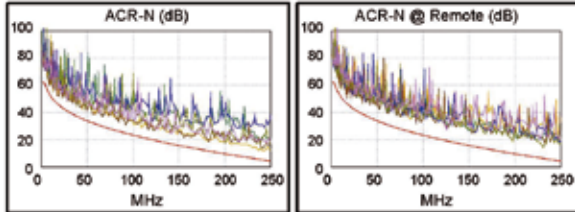
PASS	MAIN	SR	MAIN	SR
Worst Pair	12-36	36-78	12-36	36-78
NEXT (dB)	3.7	4.8	3.7	4.8
Freq. (MHz)	240.5	230.5	240.5	230.5
Limit (dB)	35.6	35.9	35.6	35.9
Worst Pair	36	45	36	36
PS NEXT (dB)	3.4	5.5	3.4	6.6
Freq. (MHz)	240.0	61.3	240.0	230.5
Limit (dB)	33.0	42.8	33.0	33.3



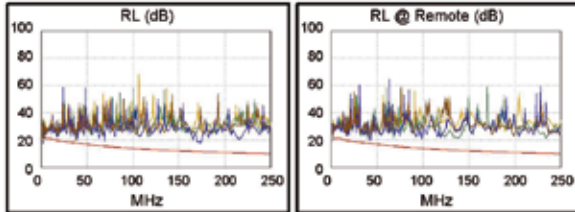
PASS	MAIN	SR	MAIN	SR
Worst Pair	45-36	45-36	45-36	45-36
ACR-F (dB)	5.9	6.2	5.9	6.2
Freq. (MHz)	235.0	249.0	235.0	249.0
Limit (dB)	16.8	16.3	16.8	16.3
Worst Pair	78	36	78	36
PS ACR-F (dB)	8.1	7.8	8.2	7.8
Freq. (MHz)	219.5	249.0	248.0	249.0
Limit (dB)	14.4	13.3	13.3	13.3



N/A	MAIN	SR	MAIN	SR
Worst Pair	36-45	36-45	12-36	36-78
ACR-N (dB)	5.5	6.0	6.8	7.8
Freq. (MHz)	18.4	16.9	243.5	230.5
Limit (dB)	46.1	47.0	4.9	6.2
Worst Pair	36	45	36	36
PS ACR-N (dB)	5.7	6.7	7.0	9.6
Freq. (MHz)	17.3	61.3	243.5	230.5
Limit (dB)	44.4	28.6	2.3	3.6



PASS	MAIN	SR	MAIN	SR
Worst Pair	45	45	45	45
RL (dB)	2.5	2.6	6.3	2.6
Freq. (MHz)	17.0	42.8	173.0	42.8
Limit (dB)	19.8	17.7	11.6	17.7



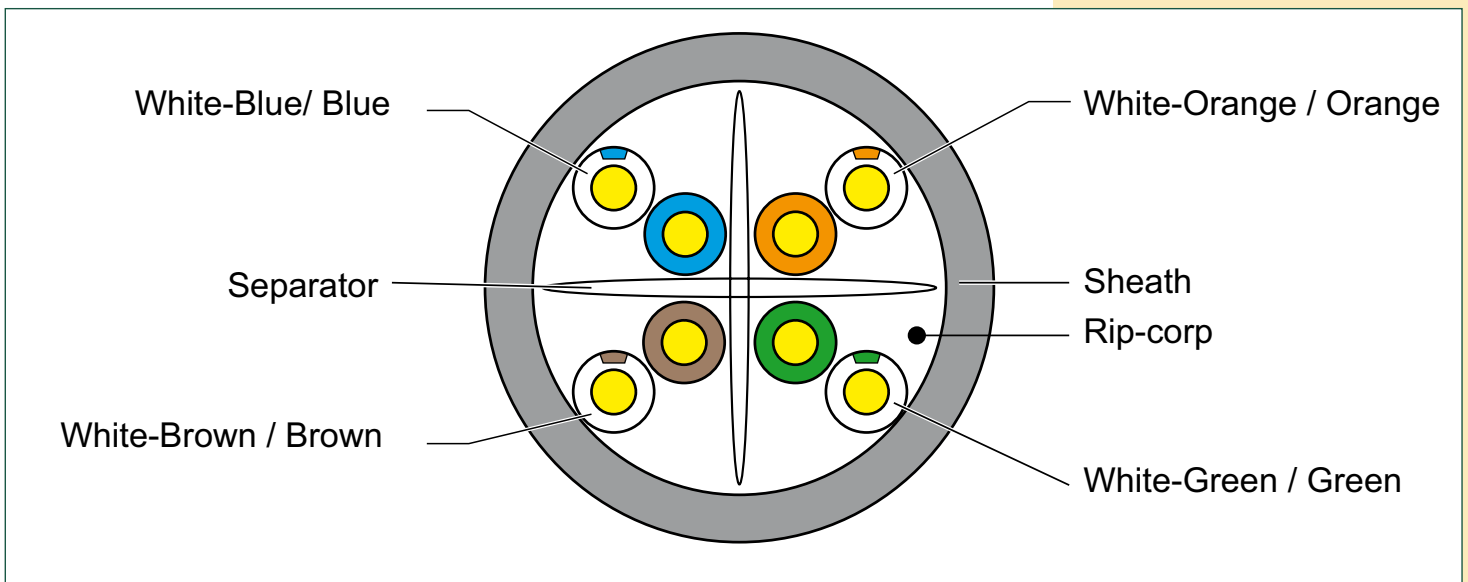
Compliant Network Standards:
 10BASE-T 100BASE-TX 100BASE-T4
 1000BASE-T ATM-25 ATM-51
 ATM-155 100VG-AnyLan TR-4
 TR-16 Active TR-16 Passive

LinkWare™ PC Version 9.3

C Certification Characteristics

Freq.(MHz)	RL > dB	ATT ≤dB	NEXT ≥dB	Retraso ≤ns	PSNEXT > dB	ELFEXT > dB	PSELFEXT ≥ dB
1	19.1	3.0	65.0	570.0	62.0	64.2	61.2
4	21.0	3.5	64.1	552.0	61.8	52.1	49.1
8	21.0	5.0	59.4	546.7	57.0	46.1	43.1
10	21.0	5.5	57.8	545.4	55.5	44.2	41.2
16	20.0	7.0	54.6	543.0	52.2	40.1	37.1
20	19.5	7.9	53.1	542.1	50.7	38.2	35.2
25	19.0	8.9	51.5	541.2	49.1	36.2	33.2
31.25	18.5	10.0	50.0	540.4	47.5	34.3	31.3
62.5	16.0	14.4	45.1	538.6	42.7	28.3	25.3
100	14.0	18.6	41.8	537.6	39.3	24.2	21.2
200	11.0	27.4	36.9	536.5	34.3	18.2	15.2
250	10.0	31.1	35.3	536.3	32.7	16.2	13.2

D Structure



E How to order

LP-C6M10BLB LanPro Reliable® Unshielded CAT 6 U/UTP Network Cable, CM-rated with Solid 100% Copper Conductors AWG 24 and Flexible-X™ Nylon core for symmetry and blue jacket in 1000 ft (305m) Easy Pull-Box.