

LP-C6E10GRF LanPro Reliable® Unshielded CAT 6 U/UTP Network Cable, CM-rated with Solid 100% Copper Conductors, 0.54mm Nominal Diameter and Flexible-X™ Nylon core for symmetry and gray jacket in 5000 ft (1524m) wood spool.

LPC6E10GRF_SS_ENB01W

Features

- Very Flexible.
- Superior performance to traditional designs.
- 568-A and 568-B compatible.
- Exceeds ANSI/TIA-568-D EN 50173-1 and ISO/IEC 11801-1, CSA FT1 requirements.
- Vertical-Tray, CSA FT1 requirements.
- Rugged Construction.
- Rip-Cord included.
- Backward compatible with CAT 5e and CAT 5 systems.
- Excellent price/performance ratio.
- Gray color jacket.
- Four (4) Twisted Pairs, 0.54mm Nominal Diameter.
- Flame rating: CM thermoplastic cover Jacket with a thickness of 0.55 mm.
- Reliable 6® is a robust product.
- Packaged in one convenient presentation: 5000 feet (1524m) wood spool.
- The Geometry is better with Flexible-X™ technology.
- Operating voltage: <48 Vrms.
- ETL No. 105118692CRT-001a.



EUROStyle

LP-C6E10GRF

LanPro Reliable® Unshielded CAT 6 U/UTP Network Cable, CM-rated with Solid 100% Copper Conductors, 0.54mm Nominal Diameter and Flexible-X™ Nylon core for symmetry and gray jacket in 5000 ft (1524m) wood spool.

The **LP-C6E10GRF** LanPro Reliable® Unshielded CAT 6 U/UTP Network Cable, CM-rated with Solid 100% Copper Conductors, 0.54mm Nominal Diameter with Flexible-X™ Nylon core for symmetry and gray jacket in 5000 ft (1524m) wood spool is the answer given by LanPro to the large demand imposed by today's high performance applications at reasonable prices.

Tested to well over 250 MHz, the guaranteed performance of this cable meets the ANSI/TIA-568-D EN 50173-1, ISO/IEC 11801-1, CSA FT1 requirements, ETL registered 105118692CRT-001a, making it ideal for transmission links supporting today's networking protocols.

ETL certified for CM commercial applications, the unshielded LanPro Reliable® CAT 6 U/UTP Network Cable is available for immediate delivery in gray color, other colors available under request.

Now with "Flexible-X™" construction, Reliable® CAT 6 cable isolates and arranges the pairs throughout the length of the cable, improving field installation as well as performance.

A Applications

Unshielded LanPro Reliable® CAT 6 U/UTP Network CM-rated is intended for Gigabit Ethernet, 100BASE-Tx, token-ring, 155 Mbps ATM, 100 Mbps TP-PMD, ISDN, analog (Broadband, Baseband), digital video and Voice over IP (VoIP), it can also be used for Video surveillance IP cameras.

B Technical Specifications

Standards	ISO/IEC11801, TIA/EIA 568.C-2, ETL No. 105118692CRT-001a			
Conductor	Material	Copper 100%		
	Nominal Diameter (mm)	0.540	Positive tolerance	+ 2%
			Negative tolerance	- 2%
Isolation layer	Material	HDPE (High Density Polyethylene)		
	Diameter (mm)	0.95±0.03		
	Color	A - Blue, White-Blue B - Orange, White-Orange C - Green, White-Green D - Brown, White-Brown		
Rip Cord	Yes			
Separator	Flexible-X™			
Drain wire	None			
Jacket	Thickness	0.55±0.05 mm		
	External diameter (O.D.)	6.1±0.4 mm		
	Surface finish	Clean, FRAP, Satinized		
	Material	CM Rated, complies RoHS		
	Color	Gray		
Markings	Type height	3.0±0.3 mm		
	Color	Black		
	Print error & space	≤ ±0.5%, 1m		
Packaging	Wood spool			
	Product length	1524 ± 1.5 m		
Physical properties	Temperature Range	-20°C a 75°C		
Mechanical characteristics	Tensile strength before Aging (Mpa)	≥13.5		
	Elongation before aging (%)	≥150		
	Aging Period (°C x hours)	100°C x 24 h x 7d		
	Tensile strength after Aging (Mpa)	≥12.5		
	Elongation after aging (%)	≥125		
	Cold Bend (-20±2°Cx4h)	No visible cracks		
	Bending Radius	8x external Dia. during install		
4x external Dia. afterwards				
Electrical Properties (20°C)	Zo (1.0 – 250.0 MHz)	100 ±15 Ohm		
	Delay skew @20°C (1.0 – 250.0 MHz)	≤ 45 ns/100m		
	Maximum DC Resistance @ (20°C)	9.5 Ohm/100 m		
	% Resistance unbalance between conductors (Max)	5 %		

C Certification



Cable ID: TIA-0001

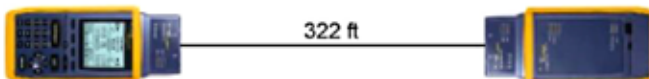
Date / Time: 09/03/2016 01:24:00 PM
 Headroom 2.7 dB (NEXT 36-78)
 Test Limit: Cat 6 Chan
 Cable Type: LanProCat6-New

Operator: LanPro America
 Software Version: V06.12
 NVP: 65.0%

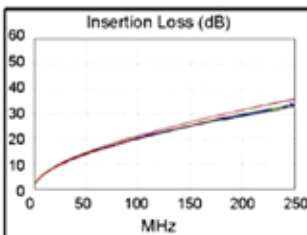
Test Summary: PASS

Model: OMNIScanner2
 Main S/N: 50D04C00038
 Remote S/N: 50E04C00019
 Main Adapter: PM06
 Remote Adapter: PM06

Wire Map	Expected	Actual
PASS	omni: 12345678	12345678
	rem.: 12345678	12345678

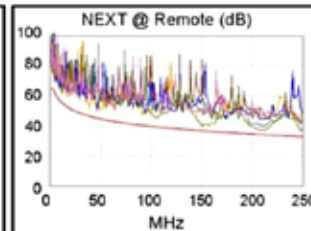
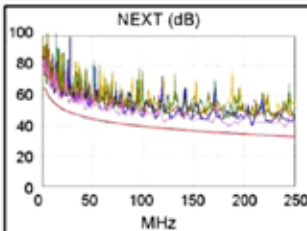


Length (ft), Limit 328	[Pair 78]	322
Prop. Delay (ns), Limit 555	[Pair 36]	521
Delay Skew (ns), Limit 50	[Pair 36]	17
Resistance (ohms)		N/A
Insertion Loss Margin (dB)	[Pair 45]	1.3
Frequency (MHz)	[Pair 45]	247.0
Limit (dB)	[Pair 45]	35.7

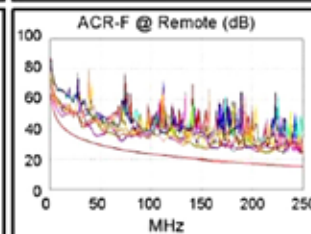
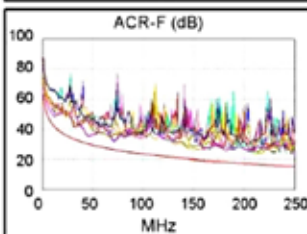


Worst Case Margin Worst Case Value

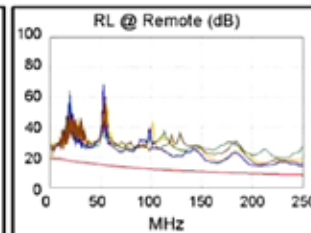
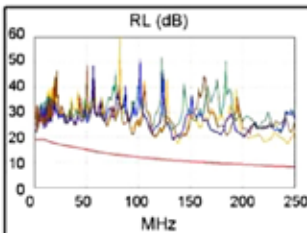
PASS	MAIN	SR	MAIN	SR
Worst Pair	45-78	36-78		
NEXT (dB)	4.1	2.7		
Freq. (MHz)	186.3	151.6		
Limit (dB)	35.4	36.8		
Worst Pair	78	78		
PS NEXT (dB)	5.4	4.7		
Freq. (MHz)	121.9	151.6		
Limit (dB)	35.6	34.0		



PASS	MAIN	SR	MAIN	SR
Worst Pair	45-12	12-45		
ACR-F (dB)	4.8	4.8		
Freq. (MHz)	45.5	45.5		
Limit (dB)	30.2	30.2		
Worst Pair	12	12		
PS ACR-F (dB)	7.0	6.4		
Freq. (MHz)	70.9	68.7		
Limit (dB)	23.2	23.6		



PASS	MAIN	SR	MAIN	SR
Worst Pair	78	45		
RL (dB)	5.8	4.5		
Freq. (MHz)	3.2	3.2		
Limit (dB)	19.0	19.0		



Compliant Network Standards:
 10BASE-T 100BASE-TX 100BASE-T4
 1000BASE-T ATM-25 ATM-51
 ATM-155 100VG-AnyLan TR-4
 TR-16 Active TR-16 Passive

LinkWare™ PC Version 9.3

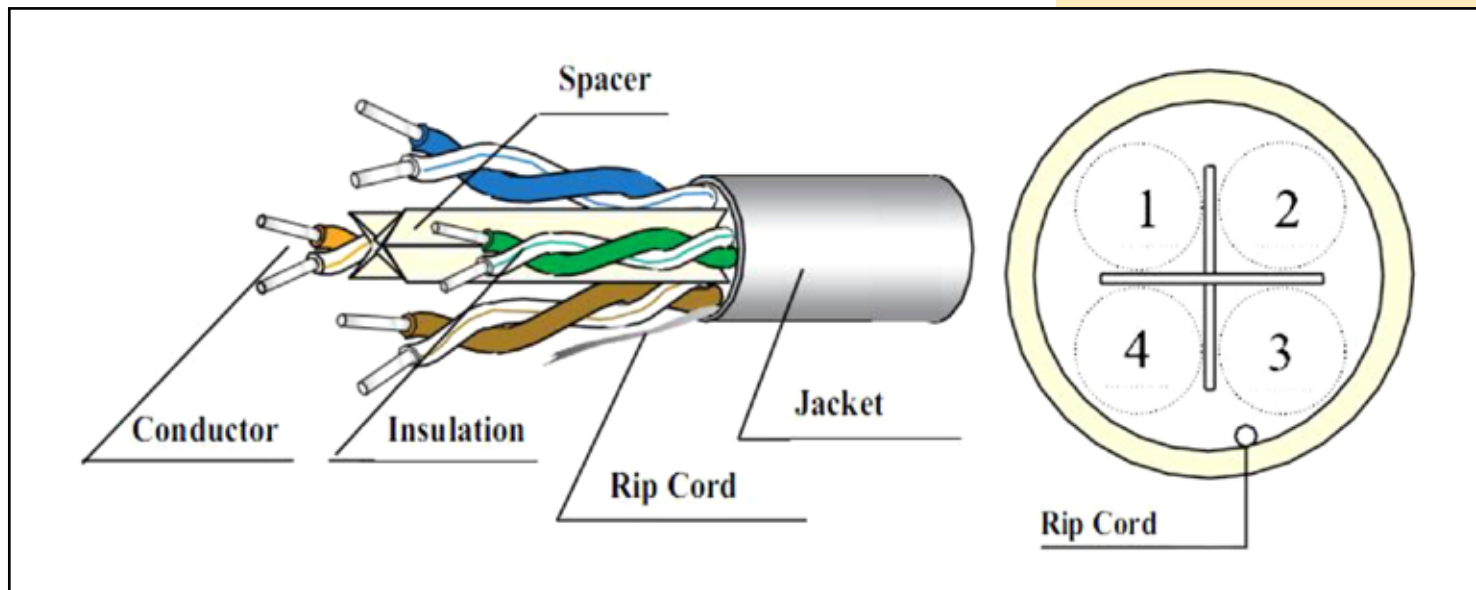
Project: LanProCAT6-NEW



D Certification Characteristics

Freq.(MHz)	RL > dB	ATT ≤ dB	NEXT ≥ dB	DELAY ≤ ns	PSNEXT > dB	ELFEXT > dB	PSELFEXT ≥ dB
1	20.0	2.03	74.3	570.00	72.3	67.8	64.8
4	23.0	3.78	65.3	552.00	63.3	55.8	52.8
8	24.5	5.32	60.8	546.73	58.8	49.7	46.7
10	25.0	5.95	59.3	545.38	57.3	47.8	44.8
16	25.0	7.55	56.2	543.00	54.2	43.7	40.7
20	25.0	8.47	54.8	542.05	52.8	41.8	38.8
25	24.3	9.51	53.3	541.20	51.3	39.8	36.8
31.25	23.6	10.67	51.9	540.44	49.9	37.9	34.9
62.5	21.5	15.38	47.7	538.55	45.4	31.9	28.9
100	20.1	19.80	44.3	537.60	42.3	27.8	24.8
200	18	28.98	39.8	536.64	37.8	21.8	18.8
250	17.3	32.85	38.3	536.27	36.3	19.8	16.8

E Structure



F How to order

LP-C6E10GRF LanPro Reliable® Unshielded CAT 6 U/UTP Network Cable, CM-rated with Solid 100% Copper Conductors, 0.54mm Nominal Diameter and Flexible-X™ Nylon core for symmetry and gray jacket in 5000 ft (1524m) Wood spool.