

LP-8CEPUSCC 8000 Series Reliable 5e® 8P8C RJ45, Keystone® Compatible Unshielded Modular CAT 5e Jack, 90° IDC.

LP8CEPUSCC_SS_ENB01W

Features

- Fit for CAT 5e general cable distribution system, backward compatible with CAT 5 systems.
- Compliant with ISO/IEC 11801, 2002 CLASS & ANSI/TIA 568-B.2 CAT 5e T568-A and T568-B punching sequences are both compatible. Compliant with IEC 60603-7-4, IEC60604-7-4, and IEC 60503-7-4.
- Our standard style allows compatibility with many other brands and systems.
- Unshielded, rugged.
- Connection type FCC connector for RJ45 patch cords and IDC for 4-pair CAT 5e cables.
- Punch angle is 90°.
- High performance copper alloy contacts and 50 micro-inches of gold plating.
- 750 mating cycles minimum for RJ45.
- 20 mating cycles minimum for IDC.
- Competitively priced.
- Material: ABS UL94V-0.
- Positive latch system.
- UTP capable.
- Compatible with 110 punch-down tools.
- Suitable for 22-26 AWG solid cable.
- Nine vivid colors to choose from.



LP-8CEPUSCC 8000 Series Reliable 5e® 8P8C RJ45, Keystone® Compatible Unshielded Modular CAT 5e Jack, 90° IDC.

The LP-8CEPUSCC, 8000 series Reliable 5e® 8P8C RJ45, Keystone® compatible unshielded modular CAT 5e jacks with 90° IDC are compatible with all the other Reliable 5e components of LanPro, as well as flat and angled faceplates in a perfect way.

LanPro has designed them specifically for high speed and bandwidth in excess of 100 MHz.

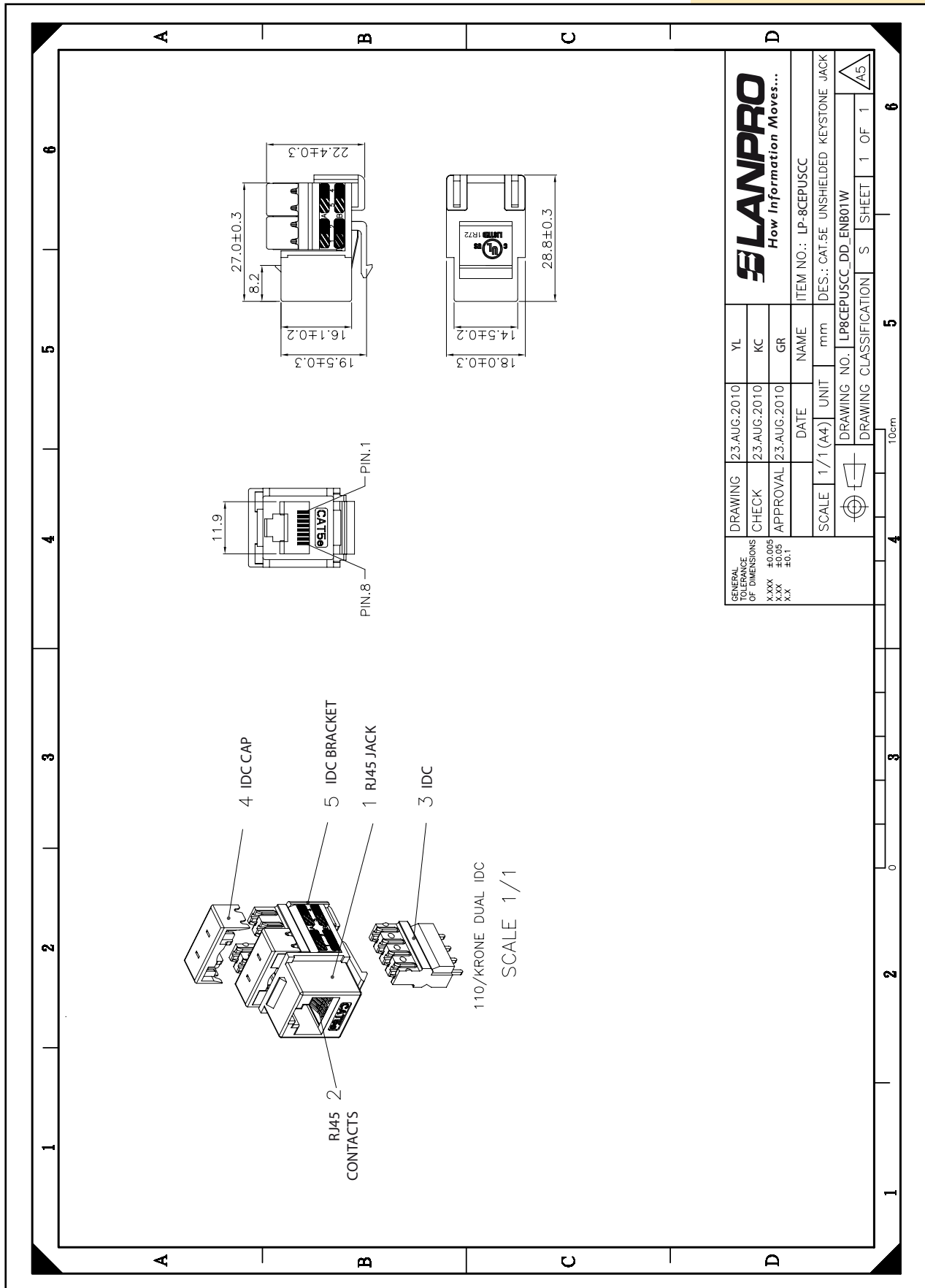
Our LP-8CEPUSCC's allow for universal termination, either T568-A or T568-B, and are punch-down design of 90°, thus offering easiness and flexibility to the installer.

Note: All our Jacks are also suitable for CAT 3 cabling system.

A Specifications

ITEM	DESCRIPTION
Model: LP-8CEPUSCC	Keystone® Jack compatible size, CAT 5e category, UTP type, 90° punching direction, for connecting application of communications ports in working area in 8 different colors
Punch directions on package	A quick guide for the punching and connection operation
IDC hats	Fastener hats ensure proper fixation of IDC clips
Standards compliance	ISO/IEC 11801, ANSI/TIA/EIA 568-B.2 CAT 5e for both T568-A and T568-B punching sequences
Connection type	FCC 0° connector for RJ45 patch cord and 90° IDC for 4-pair CAT 5e cables
Category	Fit for CAT 5e general cable distribution system and backward compatible with CAT 5 systems
Material:	
RJ45 jack	Housing: ABS+PC, UL 94V-0, with optional color
	Contact bracket: PBT+ fiberglass, UL 94V-0
RJ45 jack contact	Material: Phosphor bronze with nickel plating
	Finish: 50 micro-inches of gold plating on plug contact area
IDC housing	PC + fiberglass, UL 94V-2
	Terminal: Phosphor bronze with tin plating
IDC hat	ABS, UL 94-HB
IDC bracket	ABS, UL 94V-0
IDC entry angle	90°
PCB	FR4, UL 94V-0
Performance	
T568-A & T568-B wiring sticker	
Insertion force: 20 N max. (IEC60603-7-4)	
Retention strength: 7.7 Kg between jack and plu	
Operating temperature: -10°C to 60°C (ISO/IEC 11801, ANSI/TIA/EIA 568 B.2)	
IDC punch-down cycles: min: 20 (TIA/EIA 568-C.2)	
Dielectric withstanding voltage: 1000 VAC (IEC60604-7-4)	
Life (mating cycles)	Jack: 750 cycles min. (ISO/IEC 11801, IEC 60503-7-4)
	IDC: Suitable for AWG 22-26 stranded and solid wire, compatible with both 110 @ Kröne punch down too
Transmission	CAT 5e compatible transmission performance is in compliance with the ANSI/TIA/EIA 568 B.2 standard
Overall dimensions:	
Width: 18 ± 0.3 mm.	
Height: 22.4 ± 0.3 mm.	
Depth: 28.8 ± 0.3 mm.	
Note: The micro-inch (μ in) is a common imperial unit of distance equal to one millionth of an inch, or 25.4 nanometers (nm), or 1 μ in = 0.0254 μm.	

B Dimensional Drawing



GENERAL TOLERANCE OF DIMENSIONS X.XX ±0.05 X.XX ±0.05 X.X ±0.1	DRAWING	23.AUG.2010	YL
	CHECK	23.AUG.2010	KC
	APPROVAL	23.AUG.2010	GR
	DATE	NAME	ITEM NO.: LP-8CEPUSCC
SCALE	1/1 (A4)	UNIT	mm
DRAWING NO. LP8CEPUSCC_DD_ENB01W	DRAWING CLASSIFICATION	S	SHEET 1 OF 1

10cm

LANPRO
How Information Moves...

DES.: CAT.5E UNSHIELDED KEYSTONE JACK

C How to Order:**LP-8CEPUSCC****C: Color**

WH: White
GN: Green
YL: Yellow
BL: Blue
RD: Red
BK: Black
GR: Gray
OR: Orange
NP: Nickel plated

LP-8CEPUSWH 8000 Series Reliable 5e® 8P8C RJ45, Keystone® compatible Unshielded Modular CAT 5e Jack with 90° IDC, white color.