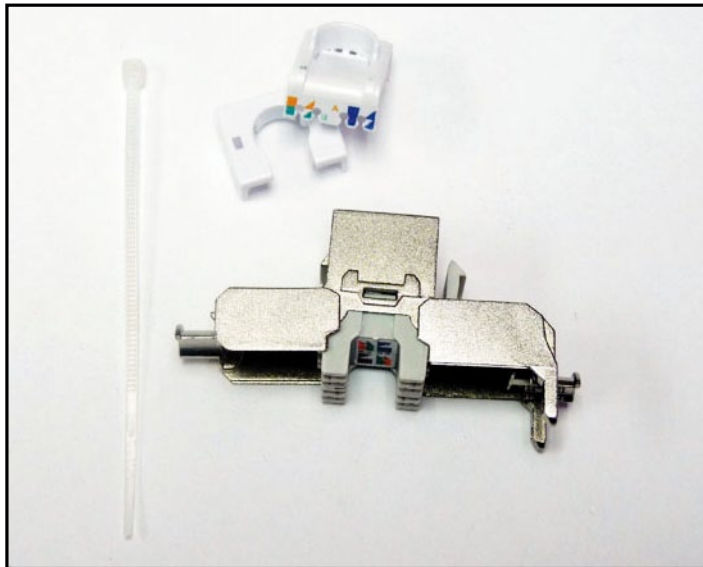


# 123 Manual, LP-8CA Performax® Modular Jack CAT 6A Tool-Less Style, Fully Shielded Conectorization

LP8CA\_M123\_ENB02W

**1**

Observe las partes del Jack, las cuales se muestran en la **figura 1**

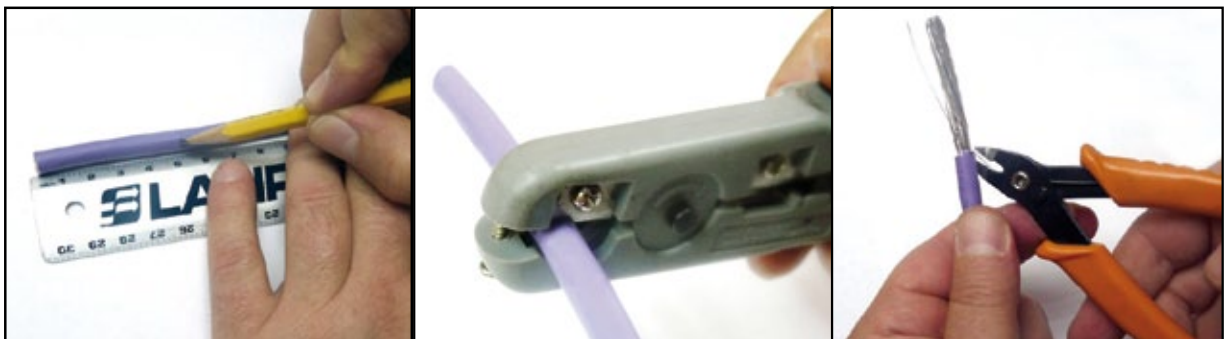


**Figura 1**

**iMC®**  
COMPATIBLE  
**PERFORMAX**

**2**

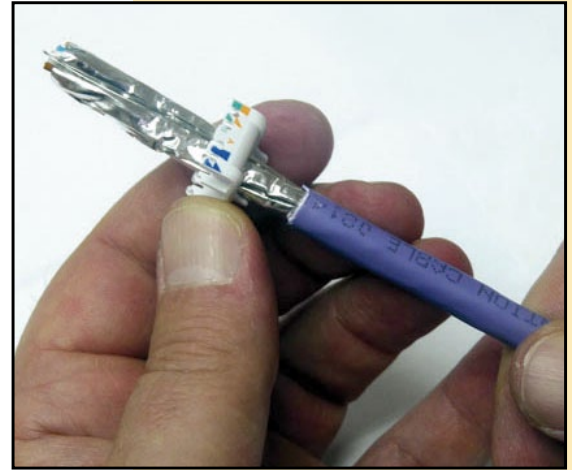
Strip 50 mm from the cable jacket by using the **LPT-S501A** tool and cut the ripcord with the **LPT-222C** flush cutting tool, as shown in **figure 2**.



**Figure 2**

**3**

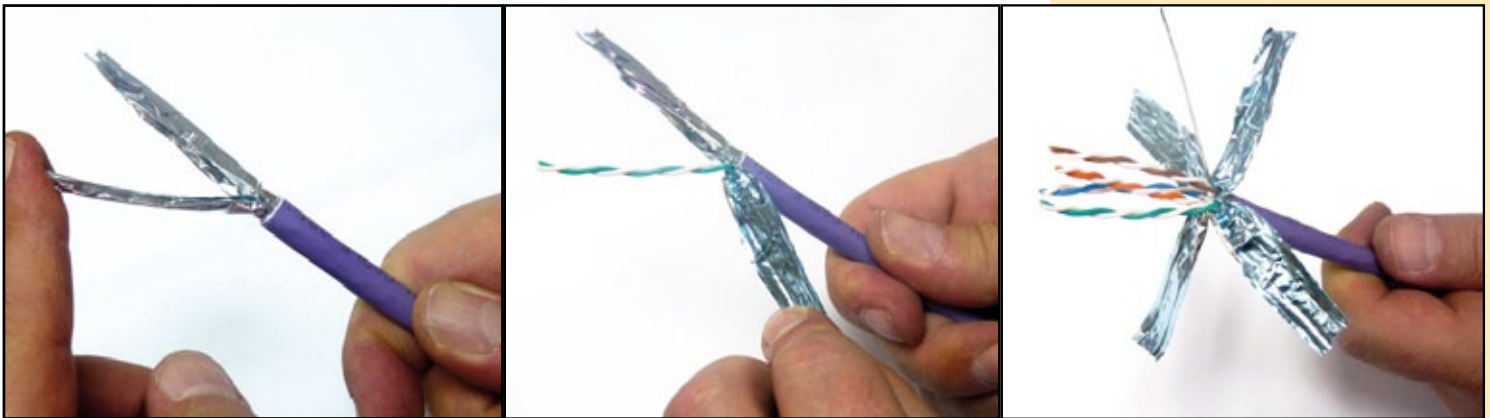
Proceed to insert the cable guide as shown in **figure 3**.



**Figure 3**

**4**

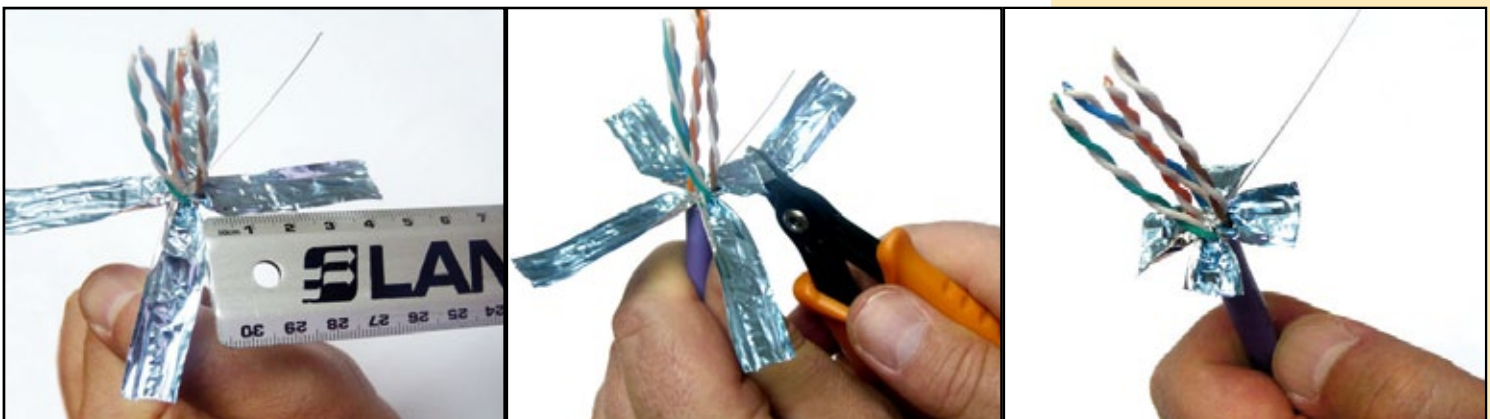
Proceed to separate the foiled pairs and peel the aluminum foil as shown in **figure 4**.



**Figure 4**

**5**

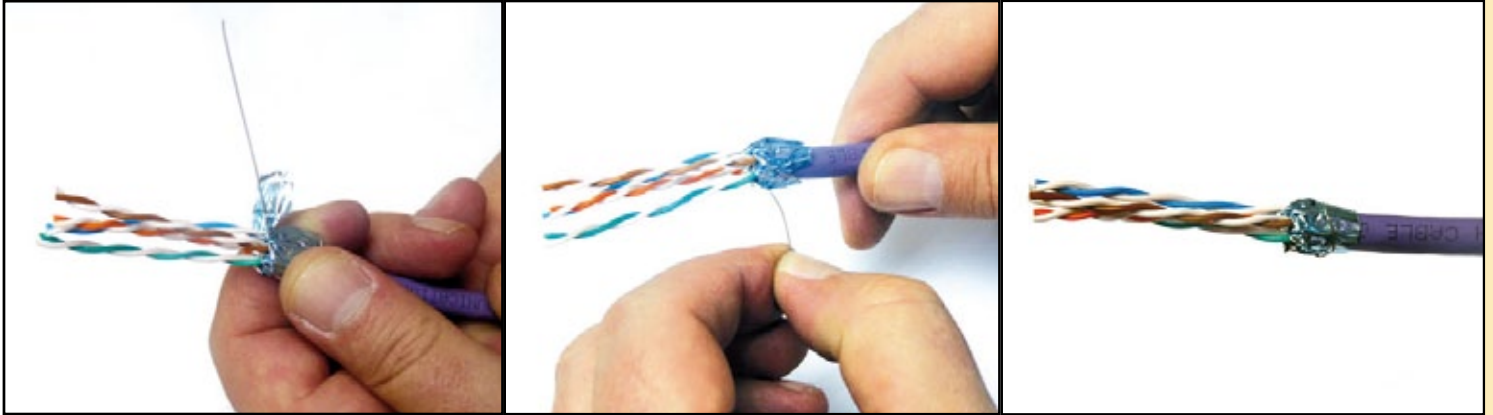
Proceed to measure 20 mm of foil and cut the excess as shown in **figure 5**.



**Figure 5**

**6**

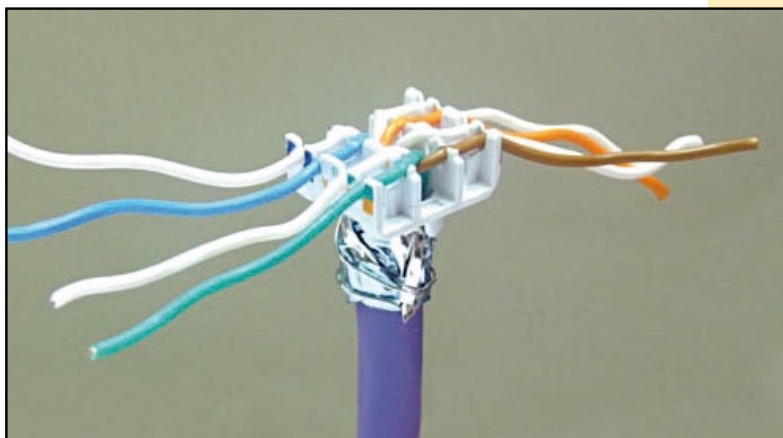
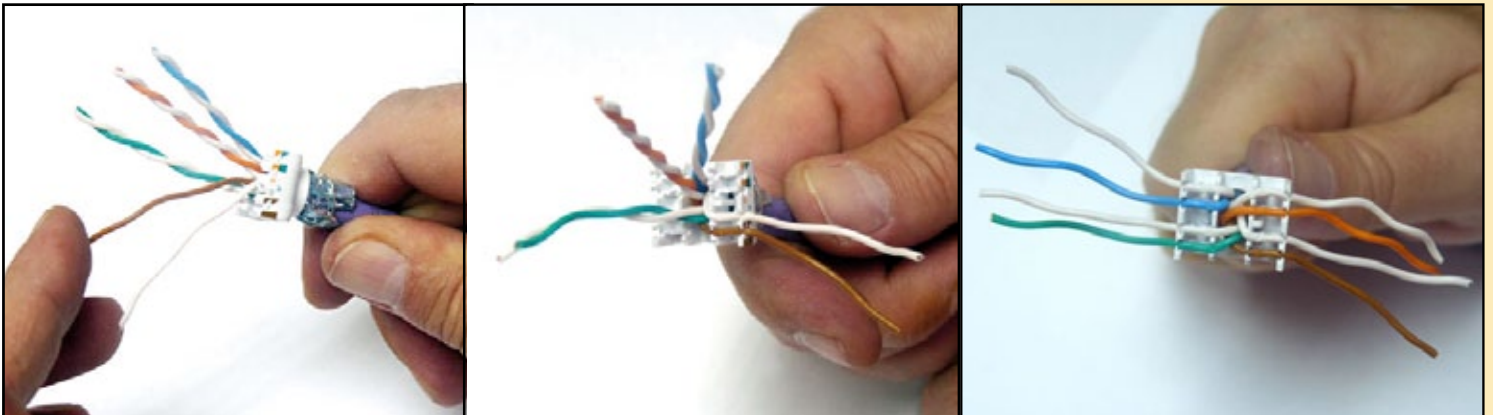
Proceed to tie the grounding wire around the foil as shown in **figure 6**.



**Figure 6**

**7**

Proceed to un-twist the four pairs and to insert them in the guides using selecting the wiring standard for this application as shown in the connector body label. The procedure is shown in the images shown in **figura 7**.



**Figure 7**

## 8

Proceed to place the cable guide on the connector as shown in the **figure 8** images, please apply pressure to help the wires enter in contact with the contacts blades.

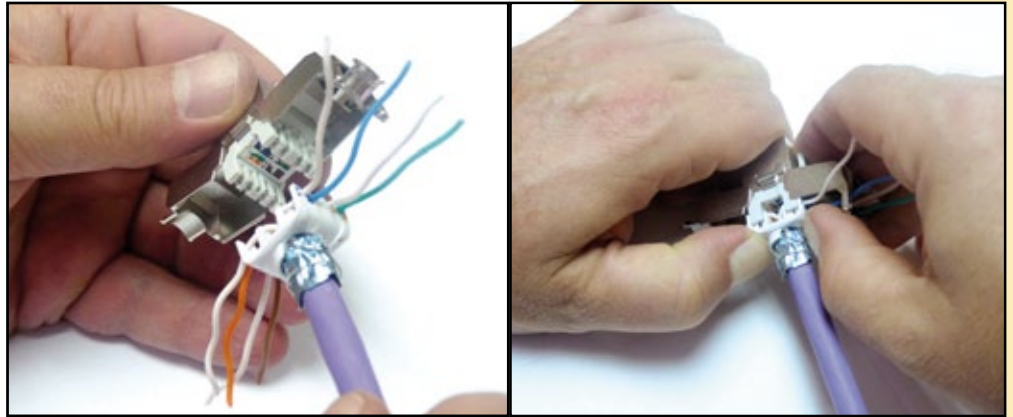


Figure 8

## 9

Proceed to cut flush the wires from the cable guide with the **LPT-222C** flush cutting tool as shown in **figure 9**.



Figure 9

## 10

Proceed to close the connector doors and affix the Tie Wrap as shown in the **Figure 10** images.

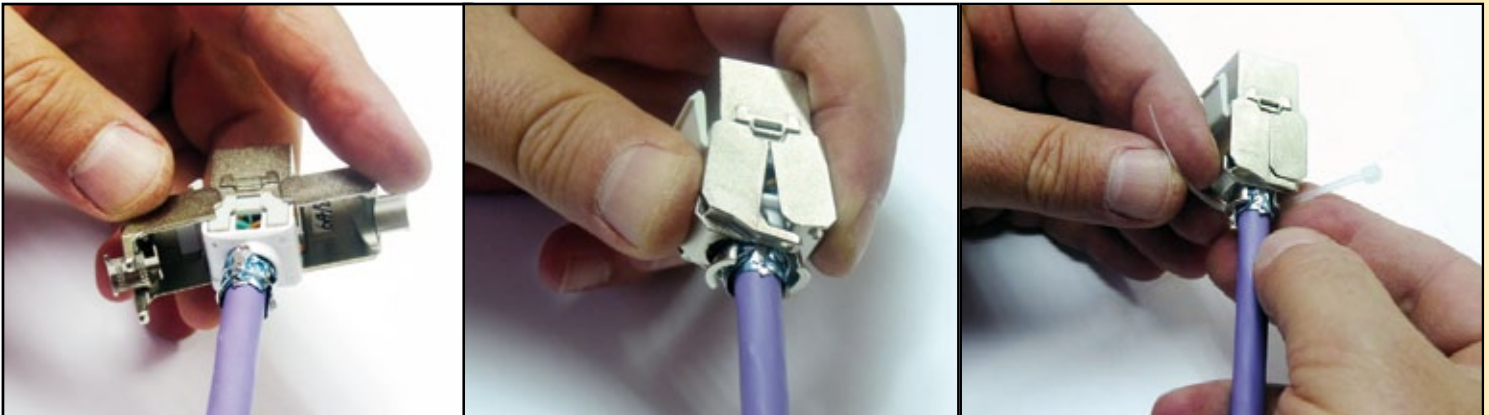


Figure 10