

## LP-4C6DUCXX CAT 6 Unshielded U/UTP High Density Data Center Patch Cord Clear type, AWG 26, CM-rated jacket

LP4C6DUCXX\_SS\_ENB01W



### Features

- Compliance to ISO/IEC 60603-7 standards, ANSI/TIA 568-C.2.
- Built with 100% copper, high flexibility AWG 28 stranded cable. (Not aluminum here).
- Supports 1 GB networks. 1000-base-T.
- CAT 6 cords are backward compatible with 5e, 5 lower category modules.
- 568A/B Compatible.
- Different colors under request.
- 0.5m, 1m, 2m, 3m, 4m, 6m and 10m lengths currently available. (Approx.: 1.5, 3, 6, 10, 13, 20 and 32.5').
- Custom lengths available upon request.



### LP-4C6DUCXX CAT 6 Unshielded U/UTP High Density Data Center Patch Cord Clear type, AWG 26, CM-rated jacket

CAT 6 U/UTP Unshielded High Density Data Center AWG 26 Patch Cords are the key to a new generation of high speed/performance cabling systems.

LanPro High Density Data Center Patch Cords are made of top quality flexible cable, which translates into soft bends and easy handling.

All LanPro cords are 100% factory tested using top-of-the line test equipment.

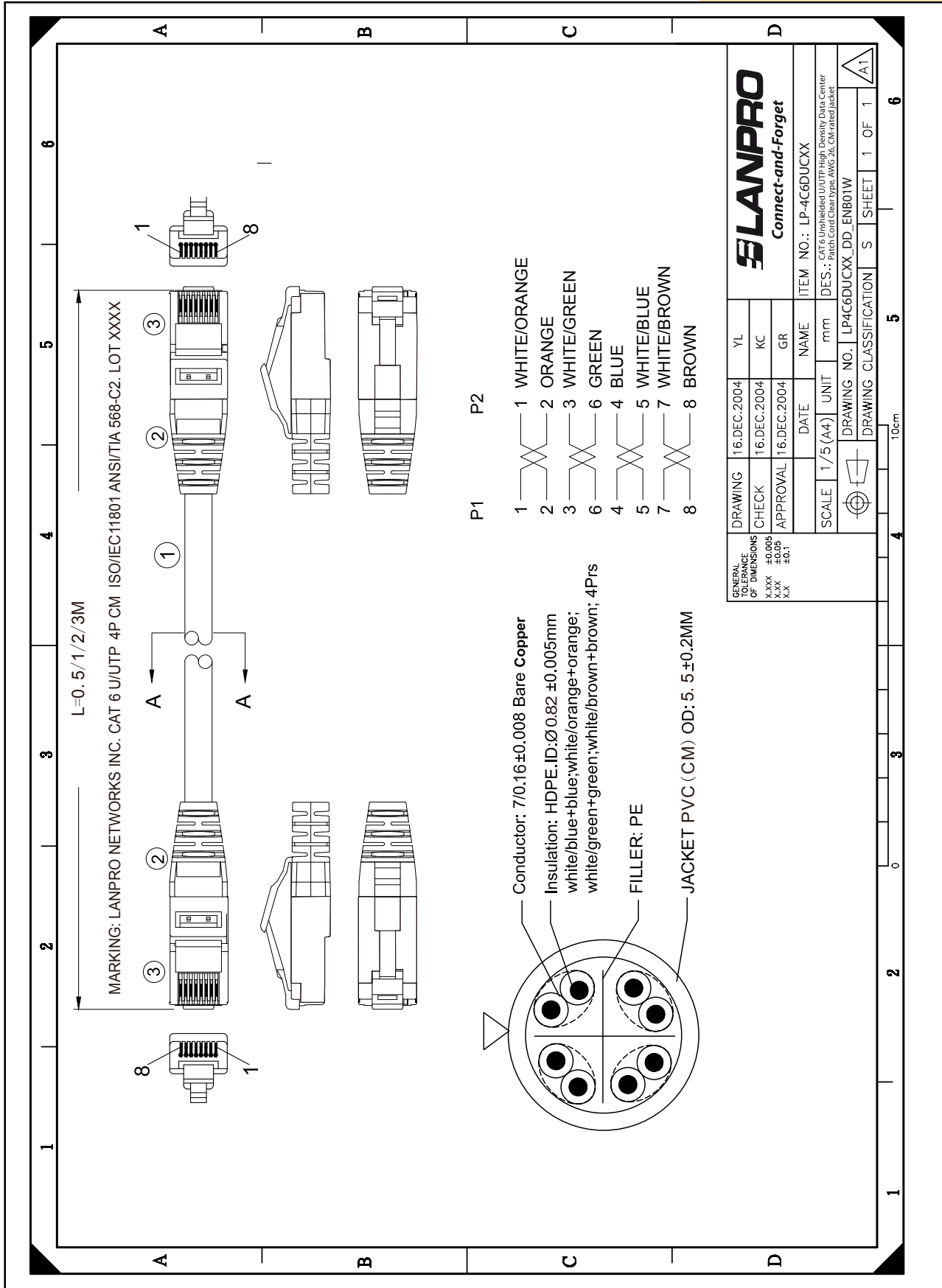
Don't compromise the performance of your installation with homemade cords or cheap imitations. LanPro High Density Data Center Patch Cords are not only very good, but also very affordable. Our units are guaranteed to perform in compliance with ISO/IEC 60603-7 standards, and complied ANSI/TIA 568-C.2 requirement.

Factory terminated and tested cords are required to achieve consistent category 6 channel performance.

**A Technical Specifications**

<b>Description</b>	Bandwidth	250 MHz
	OD Diameter	5.5mm
	Conductor	AWG26
	Approvals	CM
	Connector	30u"gold plated Rj45 connector
<b>Physical Characteristics</b>	Cable type	CAT 6 U/UTP
	Connector type	RJ45
	Wiring Scheme	T658B
	Temperature rating	60°C
	Voltage rating	30V
<b>Conductor</b>	Conductor type	Stranded bared copper
	Insulation	HDPE
	Diameter	0.82±0.05mm
	Pair identification	Pair 1= Orange, Orange-White Pair 2= Blue, Blue-White Pair 3= Green, Green-White Pair 4= Brown, Brown-White
<b>Connector Type</b>	Connector Type	8P8C (RJ45)
	PE Cross	4.4 x 4.4mm
<b>Cable</b>	Jacket	PVC (CM)
	Minimum Average Thickness	0.60mm
	Outer Diameter	5.5±0.20mm

**B Dimensional Drawing**



**How to order**

**LP-4C6DUCCLJ**

LP-4C6D		UC
CAT 6 Unshielded High Density Patch Cord		<b>Plug Type</b> Unshielded Clear type
CC	L	J
Color	Length	Jacket
<b>BK:</b> Black <b>GR:</b> Gray <b>RD:</b> Red <b>WH:</b> White <b>YL:</b> Yellow <b>BL:</b> Blue <b>GN:</b> Green <b>OR:</b> Orange <b>PR:</b> Purple <b>PK:</b> Pink	<b>05=</b> 0.5m <b>1=</b> 1m <b>2=</b> 2m <b>3=</b> 3m <b>4=</b> 4m <b>6=</b> 6m <b>10=</b> 10m	<b>X:</b> CMX <b>C:</b> CM <b>R:</b> CMR <b>P:</b> CMP <b>L:</b> LSZH <b>V:</b> PVC <b>E:</b> PE

**Example:**

<b>LP-4C6DUCWH05C</b>	CAT 6 Unshielded U/UTP High Density Data Center Patch Cord Clear type, AWG 26, CM-rated jacket white color 0.5m length.
-----------------------	---