

How to terminate an RJ45 UTP CAT 6 Plug

CAT6PLUG_AN_ENB01W

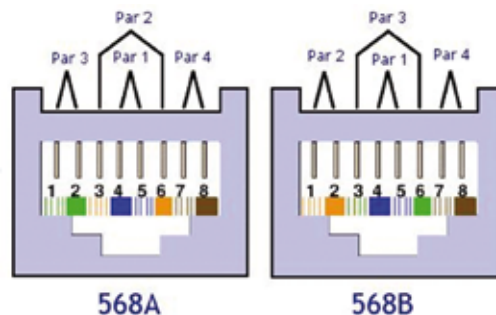
How to terminate an RJ45 UTP CAT 6 Plug

1

Please chose the termination standard appropriate for your application

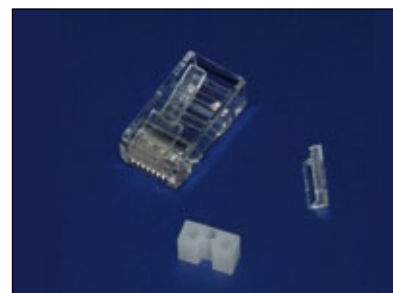
568A standard 568B standard

Green-White	White-Orange
Green	Orange
White-Orange	White-Green
Blue	Blue
White -Blue	White-Blue
Orange	Green
White-Brown	White-Brown
Brown	Brown



2

You will need the following tools and components:



- a. Crimper tool
- b. Straight cut plier
- c. UTP cable stripper tool
- d. Pproper length of UTP cable
- e. Two(2) RJ45 CAT6 plugs by LanPro for solid copper wire

3

Please see the figures for the proper identification of the plug parts



Organizer Insert



Three hole guide

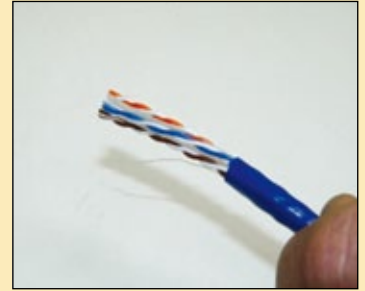


Main Body



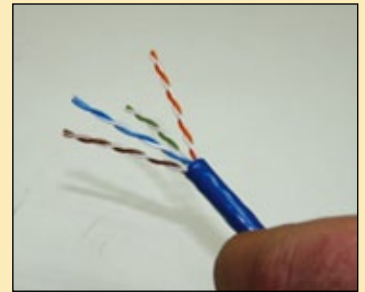
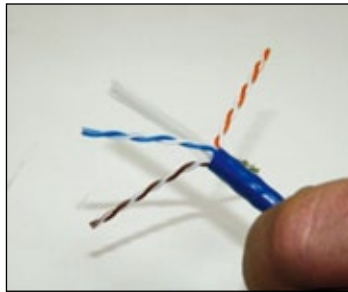
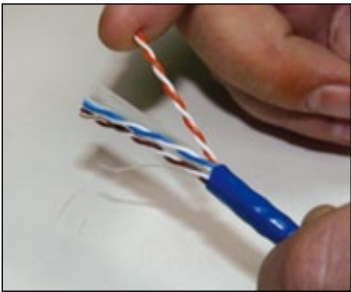
4

Please strip a length of 30 mm of the plastic sheath or jacket of the cable.



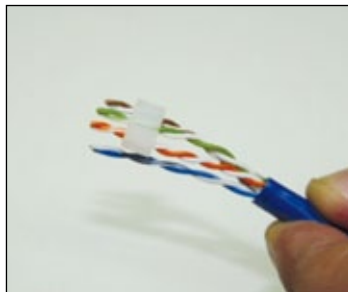
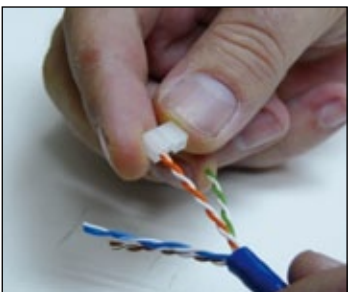
5

Separate the copper pairs and cut the internal the plastic guide of the CAT 6 Cable



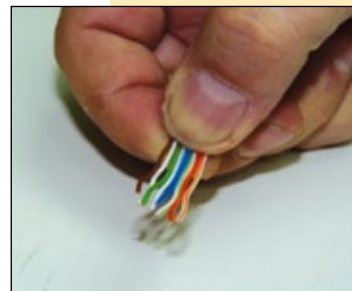
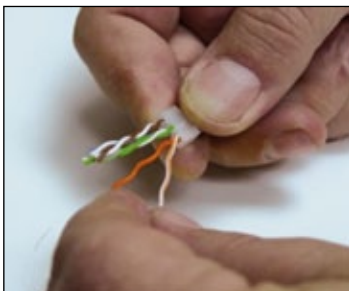
6

Use the three hole guide to arrange the pairs as shown, this example is for the 568B standard. If you want to use the 568A, please start with the white green pair, please see that the white blue pair goes through the lower hole of the piece, this is for both standards. Move the piece to the end of the conductors, touching the jacket.



7

Continue by opening and arranging the conductors in the order specified by the (568B) standard used as shown in these figures.



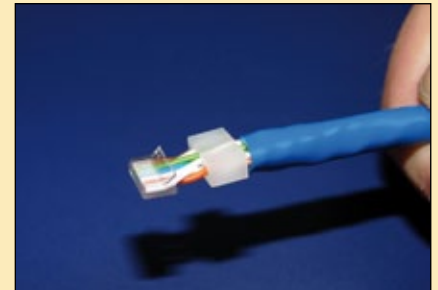
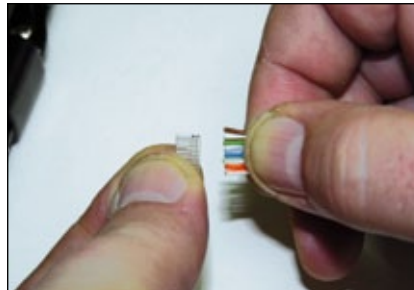
8

Proceed to make a straight cut leaving no less than 3 mm between the Three hole guide and the cut end. As shown in the figure



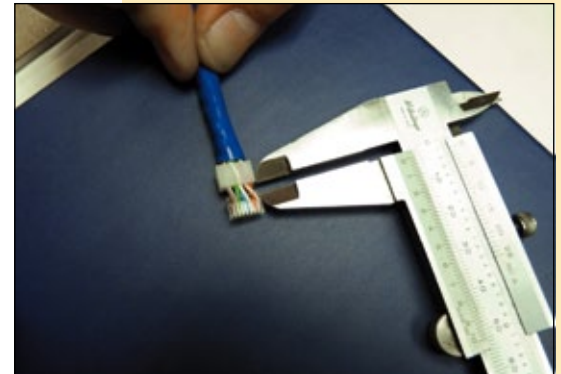
9

Proceed to place the Organizer insert in the way shown, with the angled face seeing upward until the end of it.



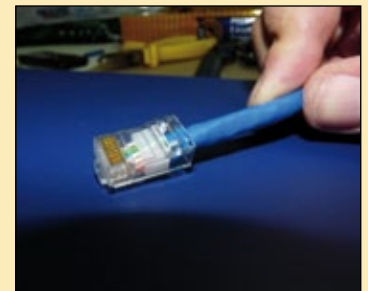
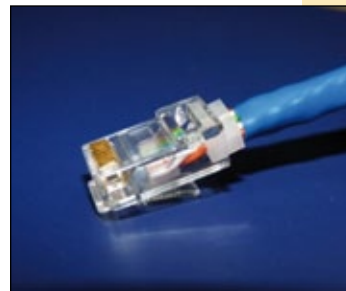
10

Please verify that the distance is right with a vernier, this will ensure that the distance from jacket to the end of the organizer insert fits in the main body with the jacket inside the plug.



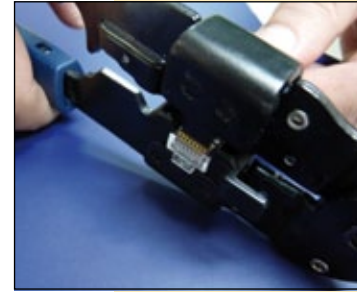
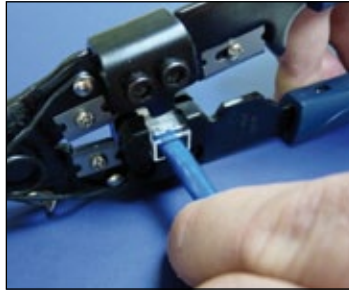
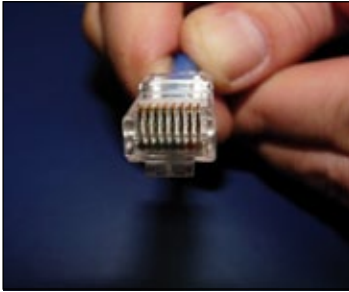
11

Proceed to insert the assembled components inside the main body as shown in the figures.



12

Please verify that the conductors are flush with the end of the plug and proceed to crimp it.

**13**

This is the connector already terminated.

