

How to terminate an RJ45 UTP CAT 5e Plug

CAT5EPLUG_AN_ENB01W

How to terminate an RJ45 UTP CAT 5e Plug

1

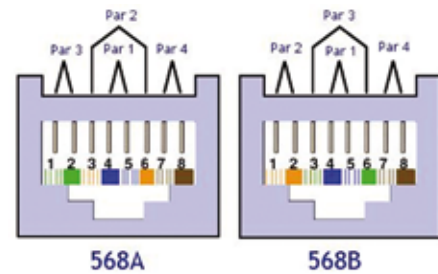
Please chose the termination standard appropriate for your application

568A standard

Green-White
Green
White-Orange
Blue
White -Blue
Orange
White-Brown
Brown

568B standard

White-Orange
Orange
White-Green
Blue
White-Blue
Green
White-Brown
Brown



2

Identify the plug's proper orientation as shown in the figure



3

Please strip a length of 30 mm of the plastic sheath or jacket of the cable.



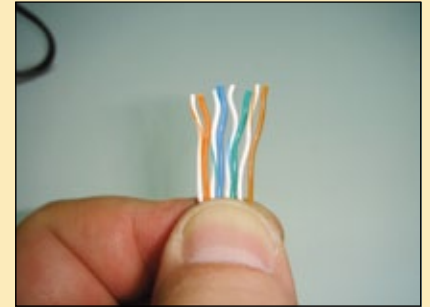
4

Separate the copper pairs.

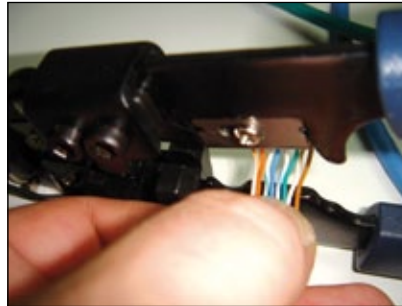


5

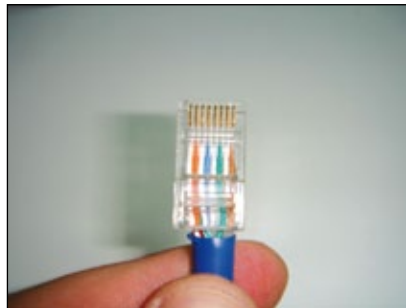
Group and comb the conductors as shown in the figure, E.G.: 568B

**6**

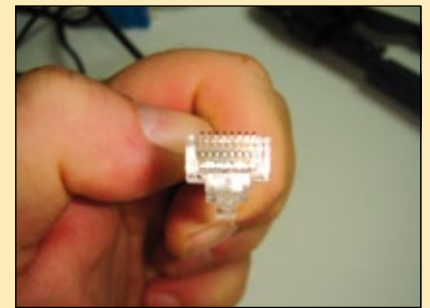
Cut to a length of 15 mm with the LanPro tool and verify the cut is straight and even.

**7**

Insert the conductors through the guide channels of the plug

**8**

Push the cable until the conductors touch the dead end of the channels

**9**

Please verify that the jacket is inside the connector. It must be retained when the crimper tool is used. This alleviates any tension on the cable over the conductors when manipulated.



Verify also that all the conductors are in their places.

10

Now, you can use the crimper as shown in the figure.

**11**

Verify the correctness of the termination by checking that the conductors are in their correct position and the jacket is not loose.

