

Rack or Cabinet mountable 19 inch 2U Drawer with key-lock.

LPR707DRAW2U_SS_ENB01W

Features

- 2 U (3-1/2") high.
- 19" width (16-1/8" useable).
- 14-1/4" useable depth.
- Rack drawer on roller glides.
- With key lock.
- Weight - 14.1 pounds.
- Construction & finish - 16 gauge steel, flat-black powder coat.



Rack or Cabinet mountable 19 inch 2U Drawer with key-lock.

Rack or Cabinet mountable 19 inch 2U Drawer with key-lock. For local storage of any kind of field usable patch cords, tools, local documentation, cables, etc.

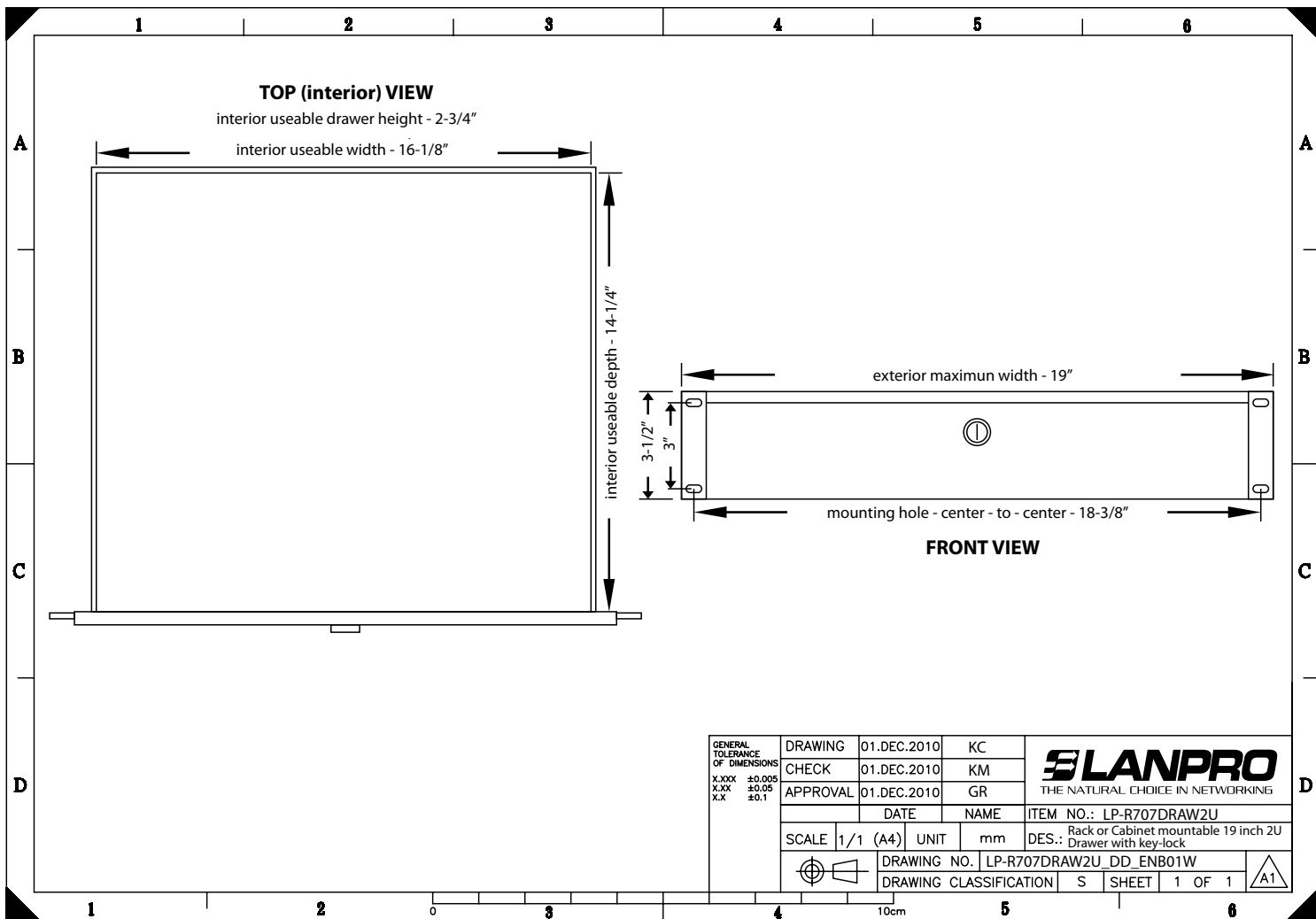
With up to 16-1/8" of useable width, 14-1/4" useable depth, all made of steel 16 gauge construction and sliding on roller glides and with a high quality key lock.

All steel rack mountable drawers easily mount into any standard 19" rack **(or any other industry standard EIA rack enclosure)**.

Each drawer occupies 2 U (3-1/2") rack units of vertical Rack/Cabinet space and conveniently locks in the closed position.



A Dimensional Drawings



B How to Order

LP-R707DRAW2U Rack or Cabinet mountable 19 inch 2U Drawer with key-lock.