

**LP-R70610845 NetworkRack Cabinets 7000 Series,
Depth 1000mm, Width 800mm, Height 45U**

LPR70610845_SS_ENB01W

Features

- 800 mm wide rack.
- Capacity to mix different products and applications in the same rack.
- Can be customized to our client specifications in different colors and /or specific depths.
- Comes packaged in only 1/3 of assembled original volume when knock down.
- Easy to assemble, comes packaged in three (2) boxes only.
- High quality security locks.
- Shelves for different depths and loads are optionally available.
- Up to 800 kg of static load capable.
- Side panel available with locks without keys (Standard) or with keys for better security (Optional).
- Twelve (12) types of doors optionally available: Comes with Front Tempered Glass and Split Mesh in the back.
- Optimal Ventilation for applications in which active equipment are used.
- Comes with ball bearing Fans in the 600 mm depth version and 4 fans in deeper versions.
- Heavy duty 250 Kg weight capacity ball bearing Casters, two (2) of them with security brakes.
- Fixing posts for securing the rack into position for permanent placement.
- Heights 45U.
- Depths 1000mm for powerful modern servers and their cabling systems.
- High SPCC grade sheet steel.
- Phosphate primer and electrostatic powder painted for scratch resistance.
- Basic color is black.
- Spares immediately available from our main offices.
- Standards: ANSI/EIA RS-310-D, IEC297-2, DIN41491 part I, DIN41494 part 7, GB/T347 as of 2-92.



**LP-R70610845
NetworkRack Cabinets 7000 Series,
Depth 1000mm, Width 800mm Height 45U**

The NetworkRack Series of Cabinets opens new horizons in performance and value. Elegant looks, exquisite design with precise craftsmanship.

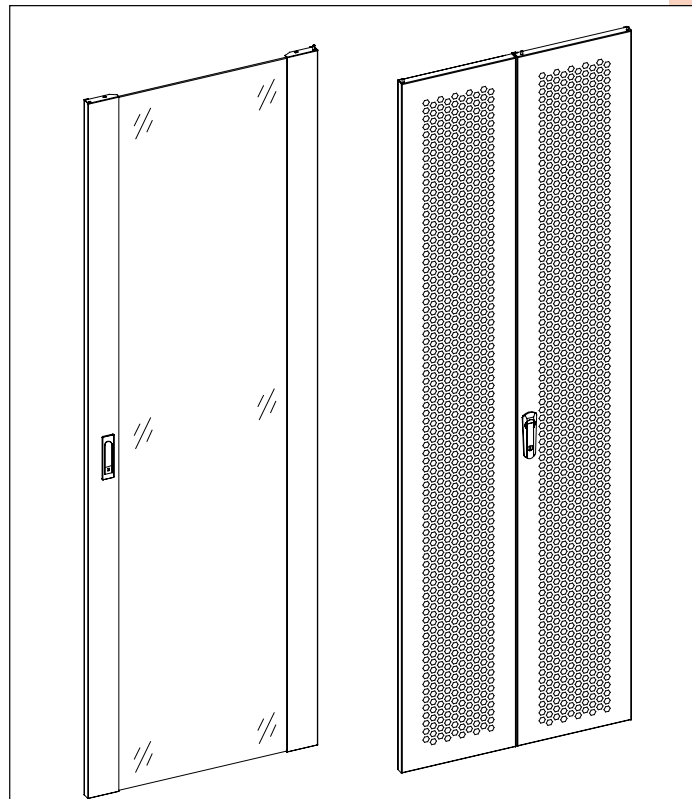
Designed to exceed the demanding requirements of the global 19" Rack market, our NetworkRack Series of Cabinets offer an excellent combination of quality, features, and cost effectiveness. Features such as enhanced thermal management, system expandability, multi-system compatibility, structural integrity, security and compliance to internationally recognized standards are joined together in a rack series which provides exceptional value for your investment.

Our NetworkRack 7000 series of Cabinets offers an excellent combination of quality, features and cost-effectiveness. This series comes packaged in only 1/3 of assembled original volume when knock down comes in three (3) boxes for an easy assembly by the user and comes with an integrated Fan ventilation system. The 7000 series has a very robust structure, permitting heavy loads up to 800 Kg of network cabling and/or equipment in a self-contained cabinet.

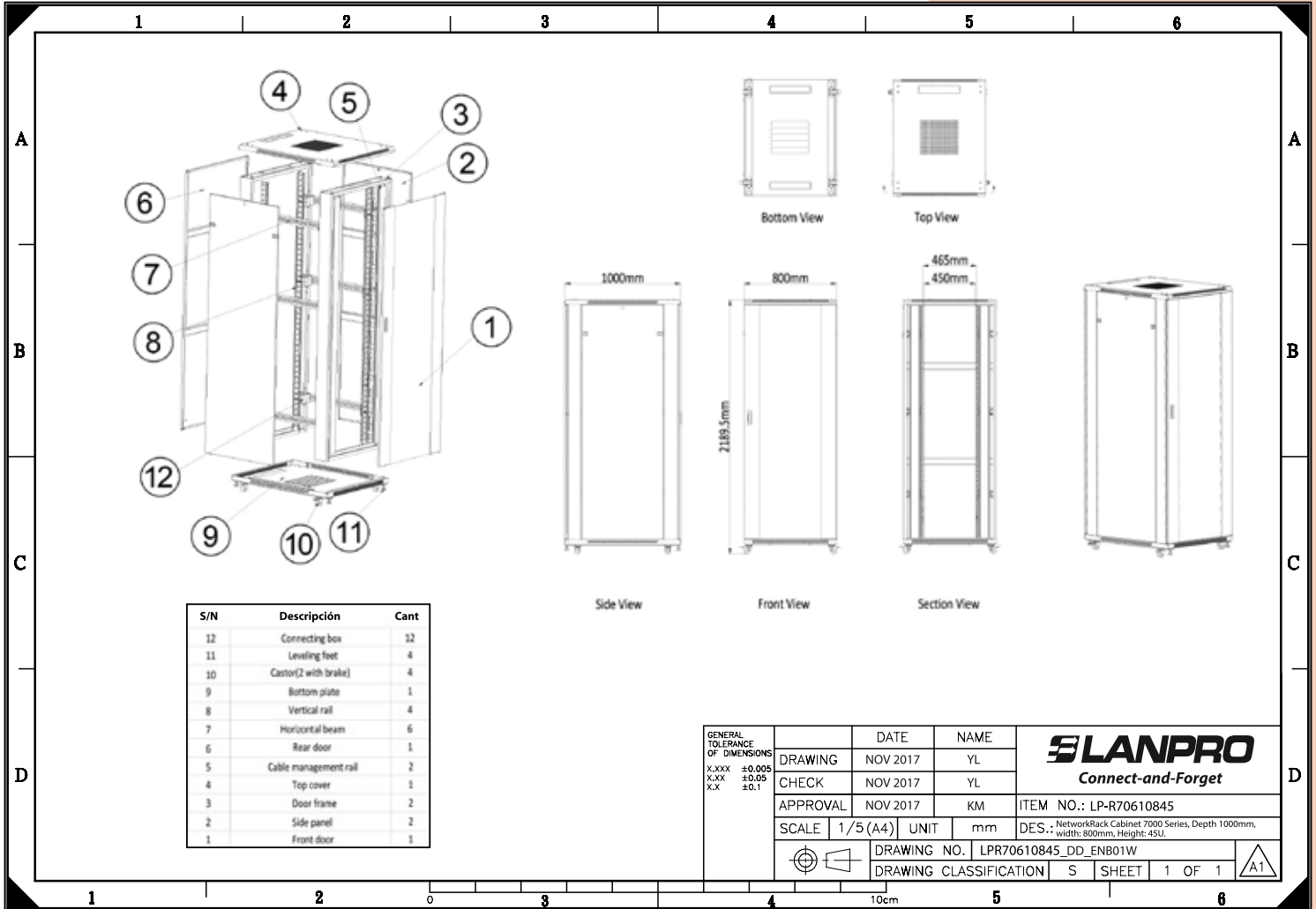
A Specifications

7000 Series Model LP-R706XX	
Standards Compliance	ANSI/EIA RS-310-D, IEC297-2, DIN41494 Part 1, DIN41494PART 7, GB/T3047, 2.92
Material (main)	<ul style="list-style-type: none"> • SPCC cold rolled steel. • Thickness of Steel: mounting profile: 2.0 mm, others: 1.2 mm.
Front Door	C Type tempered glass door with spring lock.
Rear Door	K type split vented rear door with Moon light lock.
Cable entry	Adjustable.
Surface treatment	Surface: degreasing, acid pickling, phosphoric, dip-coat primed.
Surface finish	Static paint powder coat, Color: Black.
Loading Capacity	Static loading: 800 Kg.
Degree of protection	IP20
Shipment packaging	2 Flat packs, reduces shipment cost.
Castors and feet	Included feet are adjustable, two free moving castors and two with brakes.
Air management	4 fans.
Side panels	Removable.
Accessories	Many available from LanPro.
Base (Plinth)	Optional, it enables cabinet to stay in fixed position, meeting requirements of under-base cable entry/ventilation and prevention.
Wire paths	On the top and bottom and can be closed.
Dimensions	Heights 45U, Depth 1000mm, width:800 mm.

B Standard Doors



C Dimensional Drawing



E How to order

LP-R70610845 NetworkRack Cabinet 7000 Series, Depth 1000 mm, width: 800 mm, Height: 45U.