

**LP-R70605842U**

**NetworkRack Cabinets 7000 Series, Depth 550mm, Width 800mm, Height 42U**

LPR70605842U\_SS\_ENB01W

**Features**

- 800 mm wide rack.
- Capacity to mix different products and applications in the same rack.
- Can be customized to our client specifications in different colors and /or specific depths.
- High quality security locks.
- Up to 800 kg of static load capable.
- Side panel available with locks without keys (Standard) or with keys for better security (Optional).
- Twelve (12) types of doors optionally available: Comes with Front Mesh door and Split Mesh in the back.
- Optimal Ventilation for applications in which active equipment are used.
- Comes with four ball bearing fans.
- Heavy duty 250 Kg weight capacity ball bearing Casters, two (2) of them with security brakes.
- Fixing posts for securing the rack into position for permanent placement.
- Height 42U.
- Depth 550mm for powerful modern servers and their cabling systems.
- High SPCC grade sheet steel.
- Phosphate primer and electrostatic powder painted for scratch resistance.
- Basic color is black.
- Spares immediately available from our main offices.
- Standards: ANSI/EIA-ECA-310-E; DIN41491: PART1. IEC297-2; DIN41494: PART7; GB/T3047.2-92 standard; compatible with ETSI standard



**LP-R70605842U**

**NetworkRack Cabinets 7000 Series, Depth 550mm, Width 800mm, Height 42U**

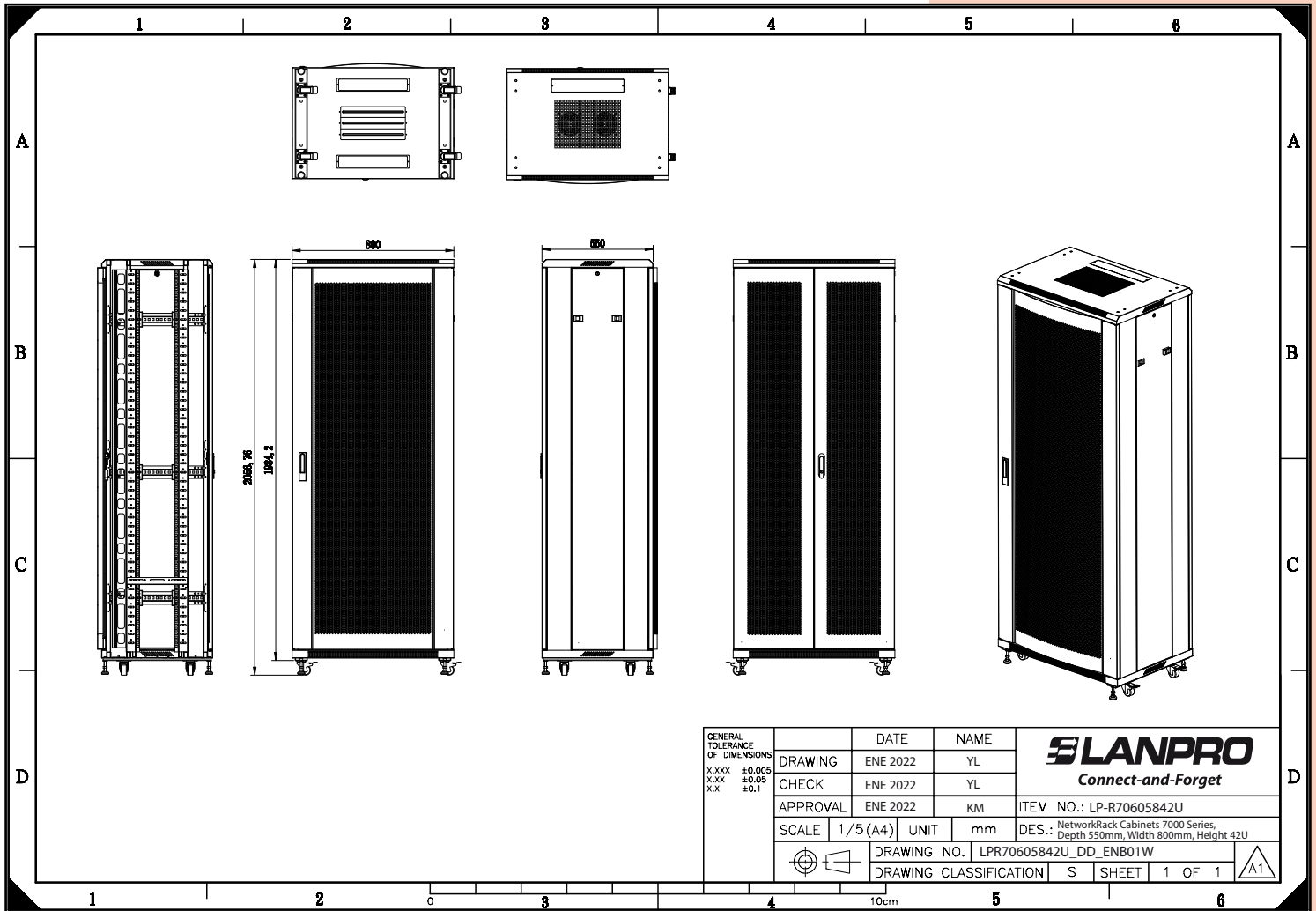
Designed to exceed the demanding requirements of the global 19" Rack market, our NetworkRack Series of Cabinets offer an excellent combination of quality, features, and cost effectiveness. Features such as enhanced thermal management, system expandability, multi-system compatibility, structural integrity, security and compliance to internationally recognized standards are joined together in a rack series which provides exceptional value for your investment.

Our NetworkRack 7000 series of Cabinets offers an excellent combination of quality, features and cost-effectiveness. The 7000 series has a very robust structure, permitting heavy loads up to 800 Kg of network cabling and/or equipment in a self-contained cabinet.

## A Specifications

7000 Series Model LP-R70605842U	
<b>Standards Compliance</b>	ANSI/EIA-ECA-310-E; DIN4149: PART1.IEC297-2; DIN41494: PART7; GB/T3047.2- 92 standard; compatible with ETSI standard
<b>Material (main)</b>	<ul style="list-style-type: none"> <li>• SPCC cold rolled steel</li> <li>• Thickness of Steel: mounting profile: 2.0 mm, others: 1.2 mm</li> </ul>
<b>Front Door</b>	Mesh door with spring lock
<b>Rear Door</b>	Split vented rear door with moon light lock
<b>Cable entry</b>	Adjustable
<b>Surface treatment</b>	Surface: degreasing, acid pickling, phosphoric, dip-coat primed
<b>Surface finish</b>	Static paint powder coat, Color: Black
<b>Loading Capacity</b>	Static loading: 800 Kg
<b>Degree of protection</b>	IP20
<b>Castors and feet</b>	Included feet are adjustable, two free moving castors and two with brakes
<b>Air management</b>	Comes with four ball bearing fans
<b>Side panels</b>	Removable
<b>Accessories</b>	Many available from LanPro
<b>Base (Plinth)</b>	Optional, it enables cabinet to stay in fixed position, meeting requirements of under-base cable entry/ventilation and prevention
<b>Wire paths</b>	On the top and bottom and can be closed
<b>Dimensions</b>	Height 42U, Depth 550mm, Width: 800 mm

**B Expanded View (typical)**



**C How to Order**

**LP-R70605842U NetworkRack Cabinets 7000 Series, Depth 550mm, Width 800mm, Height 42U.**