

123 Manual, LP-SGW2404F 24 Copper + 4 fiber Gigabit ports, Smart Managed Switch. SNMP ready Updating the firmware.

LPSGW2404F_M123_ENB01W



**123 Manual,
LP-SGW2404F 24 Copper + 4 fiber Gigabit
ports, Smart Managed Switch.
SNMP ready Updating the firmware.**

Important!

For updating the firmware it is important to highlight that you must follow exactly the following steps:

- Your connection shall be established through the physical network.
- During the process, please don't use reset of the equipment in a manual mode because permanent damage can be inflicted to the equipment.
- Firmware File loading shall be in the specified order.
- Remember to make a security copy of your equipment configuration, both in digital and printed.
- Once the firmware has been updated it will return to default values.



1

Open the browser of your choice and input the LP-SGW2404F's IP address. The default address is: 192.168.0.1, as shown in **figure 1**; please remember to configure your network card in the same IP range and use a port belonging to the administrative network; it is port 1 by default.

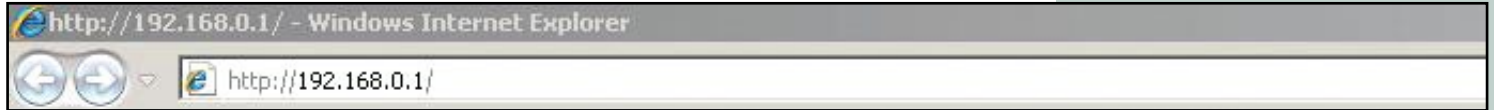


figure 1

2

The equipment will prompt for your user credentials, please input them and select: **Login**, as shown in **figure 2**.



figure 2

3

Select option: **Firmware Upgrade** in **System Tools** and select **Browse**, as shown in **figure 3**.

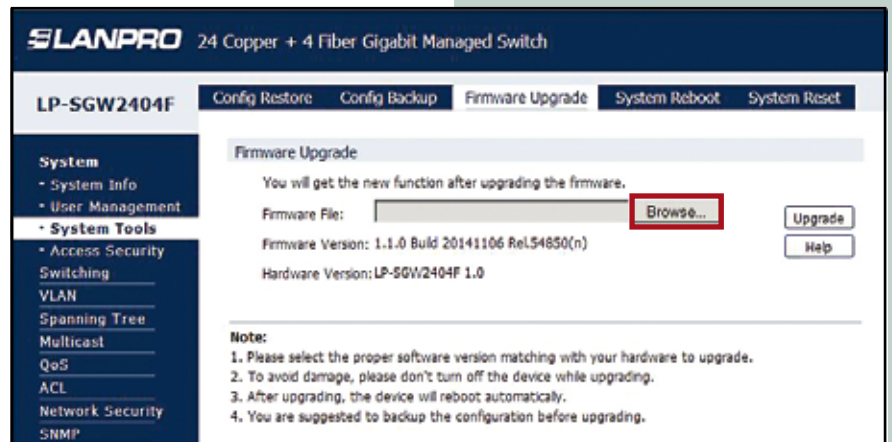


figure 3

4

Please select the corresponding file, followed by option **Open**, as shown in **figure 4**.

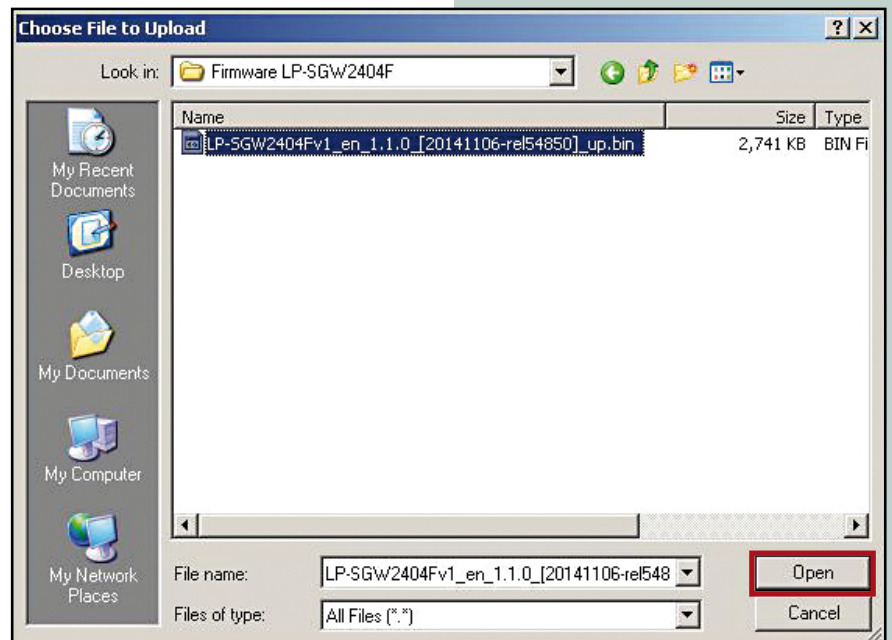


figure 4

5

Select option **Upgrade** as shown in **figure 5**.

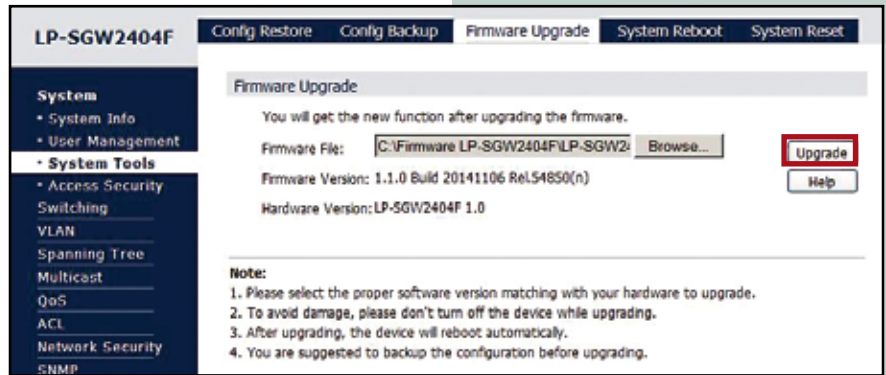


figure 5

6

The equipment will ask for your confirmation, please remember that the equipment cannot be reset or interrupted in any manner or irreversible damage can be inflicted on it. If you agree with this update, please select **OK** as shown in **figure 6**

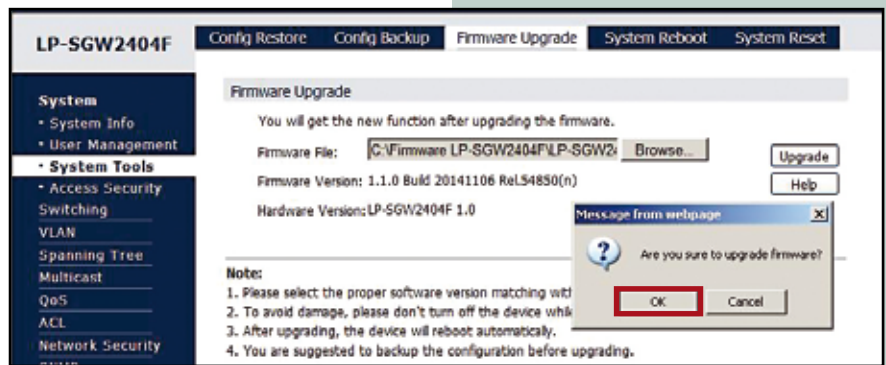


figure 6

7

You will now observe how the upload is performed and the system updated automatically, as shown in **figure 7**.

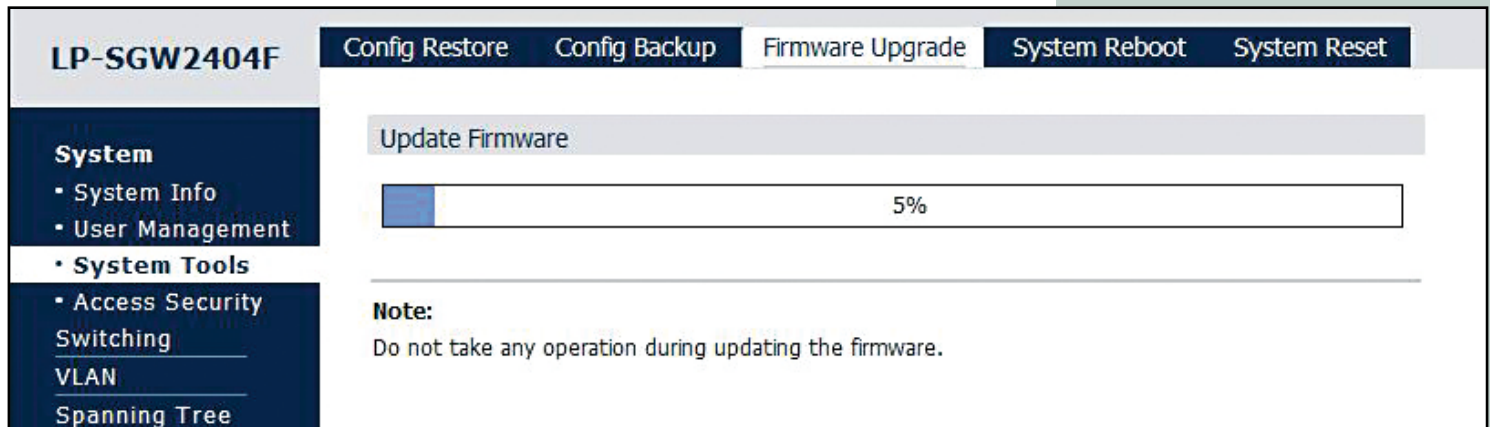


figure 7

8

Once the upload is finished, the equipment will boot automatically; please wait approximately for 5 minutes. You can watch your network card disconnection as shown in **figure 8**

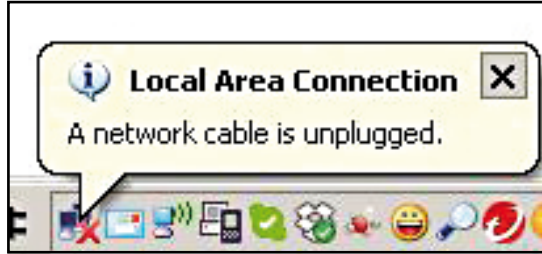


figure 8

9

If your browser doesn't refresh, try doing it yourself; if you are using Internet Explorer, use the F5 key. Once done, the equipment will prompt you for your credentials as shown in **figure 9**.



figure 9

10

You will notice if your firmware was updated in the screen shown in **figure 10**.

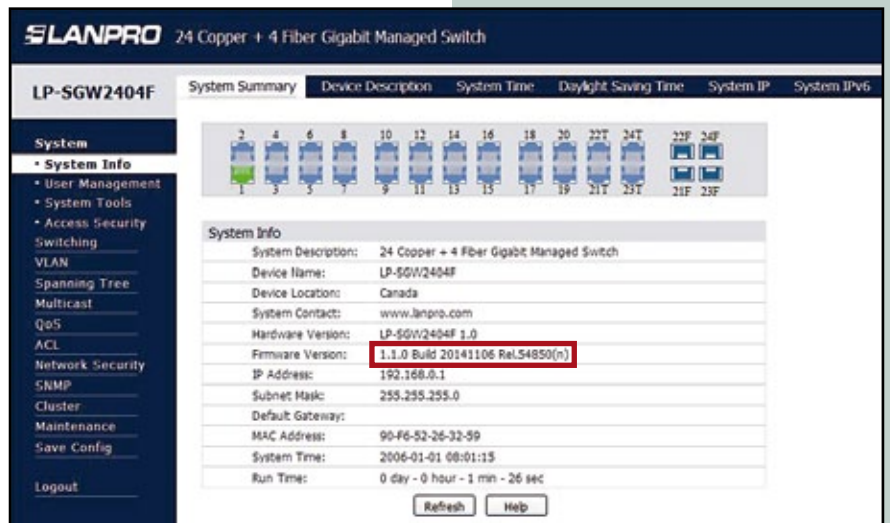


figure 10