

CLI Reference Guide

LP-SGW2404FP

24 Copper PoE + 4 Fiber Gigabit Managed Switch



CONTENTS

<u>Preface</u>	1
<u>Chapter 1 Using the CLI</u>	4
<u>1.1 Accessing the CLI</u>	4
<u>1.1.1 Logon by a console port</u>	4
<u>1.1.2 Logon by Telnet</u>	6
<u>1.2 CLI Command Modes</u>	8
<u>1.3 Security Levels</u>	10
<u>1.4 Conventions</u>	11
<u>1.4.1 Format Conventions</u>	11
<u>1.4.2 Special Characters</u>	11
<u>1.4.3 Parameter Format</u>	11
<u>Chapter 2 User Interface</u>	12
<u>enable</u>	12
<u>enable password</u>	12
<u>disable</u>	13
<u>configure</u>	13
<u>exit</u>	13
<u>end</u>	14
<u>Chapter 3 IEEE 802.1Q VLAN Commands</u>	15
<u>vlan database</u>	15
<u>vlan</u>	15
<u>interface vlan</u>	16
<u>description</u>	16
<u>switchport type</u>	17
<u>switchport allowed vlan</u>	17
<u>switchport pvid</u>	18
<u>switchport general egress-rule</u>	18
<u>show vlan</u>	19
<u>show interface switchport</u>	19
<u>Chapter 4 MAC VLAN Commands</u>	20
<u>mac-vlan add</u>	20
<u>mac-vlan remove</u>	20
<u>mac-vlan modify</u>	21

show mac-vlan	21
Chapter 5 Protocol VLAN Commands	22
protocol-vlan template	22
protocol-vlan vlan	22
show protocol-vlan template	23
show protocol-vlan vlan	23
Chapter 6 Voice VLAN Commands	25
voice-vlan enable	25
voice-vlan aging-time	25
voice-vlan priority	26
voice-vlan oui	26
switchport voice-vlan mode	27
switchport voice-vlan security	27
show voice-vlan global	28
show voice-vlan oui	28
show voice-vlan switchport	28
Chapter 7 GVRP Commands	30
gvrp	30
gvrp (interface)	30
gvrp registration	31
gvrp timer	31
show gvrp global	32
show gvrp interface	33
Chapter 8 LAG Commands	34
interface link-aggregation	34
interface range link-aggregation	34
link-aggregation	35
link-aggregation hash-algorithm	35
description	36
show interfaces link-aggregation	36
Chapter 9 LACP Commands	37
lACP system-priority	37
lACP admin-key	37
lACP port-priority	38

show lacp interface	38
show lacp system-priority	39
Chapter 10 User Manage Commands	40
user add	40
user remove	40
user modify status	41
user modify type	41
user modify password	42
user access-control disable	42
user access-control ip-based	43
user access-control mac-based	43
user access-control port-based	43
user max-number	44
user idle-timeout	44
show user account-list	45
show user configuration	45
Chapter 11 Binding Table Commands	47
binding-table user-bind	47
binding-table remove	47
dhcp-snooping	48
dhcp-snooping global	48
dhcp-snooping information enable	49
dhcp-snooping information strategy	49
dhcp-snooping information user-defined	50
dhcp-snooping information remote-id	50
dhcp-snooping information circuit-id	51
dhcp-snooping trusted	51
dhcp-snooping mac-verify	52
dhcp-snooping rate-limit	52
dhcp-snooping decline	53
show binding-table	53
show dhcp-snooping global	53
show dhcp-snooping information	54
show dhcp-snooping interface	54
Chapter 12 ARP Inspection Commands	55

arp detection (global)	55
arp detection trust-port	55
arp detection (interface)	56
arp detection limit-rate	56
arp detection recover	57
show arp detection global	57
show arp detection interface	57
show arp detection statistic	58
show arp detection statistic reset	58
Chapter 13 DoS Defend Command	59
dos-prevent	59
dos-prevent type	59
show dos-prevent	60
Chapter 14 IEEE 802.1X Commands	61
dot1x	61
dot1x auth-method	61
dot1x guest-vlan	62
dot1x quiet-period	62
dot1x timer	63
dot1x retry	63
dot1x(interface)	64
dot1x guest-vlan	64
dot1x port-control	65
dot1x port-method	65
radius authentication primary-ip	66
radius authentication secondary-ip	66
radius authentication port	67
radius authentication key	67
radius accounting enable	68
radius accounting primary-ip	68
radius accounting secondary-ip	69
radius accounting port	69
radius accounting key	70
radius response-timeout	70
show dot1x global	71
show dot1x interface	71

show radius authentication	71
show radius accounting	72
Chapter 15 Log Commands	73
logging local buffer	73
logging local flash	73
logging clear	74
logging loghost	74
show logging local-config	75
show logging loghost	75
show logging buffer level	76
show logging flash level	76
Chapter 16 SSH Commands	78
ssh server enable	78
ssh version	78
ssh idle-timeout	78
ssh max-client	79
ssh download	79
show ssh	80
Chapter 17 SSL Commands	81
ssl enable	81
ssl download certificate	81
ssl download key	82
show ssl	82
Chapter 18 Address Commands	83
bridge address port-security	83
bridge address static	84
bridge aging-time	84
bridge address filtering	85
show bridge port-security	85
show bridge address	86
show bridge aging-time	86
Chapter 19 System Commands	87
system-descript	87
system-time gmt	87

system-time manual	88
system-time dst	88
ip address	89
ip management-vlan	89
ip dhcp-alloc	90
ip bootp-alloc	90
reset	90
reboot	91
user-config backup	91
user-config load	91
user-config save	92
firmware upgrade	92
ping	93
tracert	93
loopback	94
show system-info	94
show ip address	95
show system-time	95
show system-time dst	96
Chapter 20 Ethernet Configuration Commands	97
interface ethernet	97
interface range ethernet	97
description	98
shutdown	98
flow-control	98
negotiation	99
storm-control	100
storm-control disable bc-rate	100
storm-control disable mc-rate	101
storm-control disable ul-rate	101
port rate-limit	101
port rate-limit disable ingress	102
port rate-limit disable egress	102
show interface configuration	103
show interface status	103
show interface counters	103
show storm-control ethernet	104

show port rate-limit	104
Chapter 21 QoS Commands	106
qos	106
qos dot1p config	106
qos dscp enable	107
qos dscp config	107
qos scheduler	108
show qos port-based	109
show qos dot1p	109
show qos dscp	110
show qos scheduler	110
Chapter 22 Port Mirror Commands	111
mirror add	111
mirror remove group	112
mirror remove mirrored	112
show mirror	114
Chapter 23 Port isolation Commands	114
port isolation	114
show port isolation	114
Chapter 24 PoE Commands	115
power inline consumption (global configuration)	115
power inline disconnect-method	115
power inline supply status	116
power inline priority	116
power inline consumption (interface configuration)	116
power inline time-segment	117
power inline profile	117
power profile	118
power time-segment	118
power holiday	119
show power inline	120
show power inline configuration	120
show power inline information	121
show power time-segment	121
show power holiday	121

show power profile	122
Chapter 25 ACL Commands.....	123
acl time-segment	123
acl edit time-segment	124
acl holiday	124
acl create	125
acl rule mac-acl	125
acl edit rule mac-acl	126
acl rule std-acl	127
acl edit rule std-acl	128
acl policy policy-add	129
acl policy action-add	130
acl edit action	131
acl bind to-port	131
acl bind to-vlan	132
show acl time-segment	132
show acl holiday	133
show acl config	133
show acl bind	133
Chapter 26 MSTP Commands.....	134
spanning-tree global	134
spanning-tree common-config	135
spanning-tree region	136
spanning-tree msti	136
spanning-tree msti	137
spanning-tree tc-defend	138
spanning-tree security	138
spanning-tree mcheck	139
show spanning-tree global-info	140
show spanning-tree global-config	140
show spanning-tree port-config	140
show spanning-tree region	141
show spanning-tree msti config	141
show spanning-tree msti port	141
show spanning-tree security tc-defend	142
show spanning-tree security port-defend	142

Chapter 27 IGMP Commands	143
igmp-snooping global	143
igmp-snooping config	143
igmp-snooping vlan-config-add	144
igmp-snooping vlan-config	145
igmp-snooping multi-vlan-config	146
igmp-snooping static-entry-add	146
igmp-snooping filter-add	147
igmp-snooping filter-config	148
igmp-snooping filter	148
show igmp-snooping global-config	149
show igmp-snooping port-config	149
show igmp-snooping vlan-config	150
show igmp-snooping multi-vlan	150
show igmp-snooping multi-ip-list	150
show igmp-snooping filter-ip-addr	151
show igmp-snooping port-filter	151
show igmp-snooping packet-stat	151
show igmp-snooping packet-stat-clear	152
Chapter 28 SNMP Commands	153
snmp global	153
snmp view-add	153
snmp group-add	154
snmp user-add	155
snmp community-add	156
snmp notify-add	157
snmp-rmon history sample-cfg	159
snmp-rmon history owner	159
snmp-rmon history enable	159
snmp-rmon event user	160
snmp-rmon event description	160
snmp-rmon event type	161
snmp-rmon event owner	161
snmp-rmon event enable	162
snmp-rmon alarm config	162
snmp-rmon alarm owner	164

snmp-rmon alarm enable	164
show snmp global-config	164
show snmp view	165
show snmp group	165
show snmp user	165
show snmp community	166
show snmp destination-host	166
show snmp-rmon history	166
show snmp-rmon event	167
show snmp-rmon alarm	167
Chapter 29 LLDP Commands.....	168
lldp enable	168
lldp hold-multiplier	168
lldp timer	169
lldp med-fast-count	170
lldp admin-status	170
lldp snmp-trap	171
lldp tlv-select	171
lldp med-status	172
lldp med-tlv-select	172
lldp med-location	173
show lldp global	173
show lldp interface	174
show lldp local-information	174
show lldp neighbor-information	174
show lldp statistics	175
show lldp med fast-count	175
show lldp med interface	175
show lldp med local-information	176
show lldp med neighbor-information	176
Chapter 30 Cluster Commands.....	178
cluster ndp	178
cluster ntdp	178
cluster explore	179
cluster	180
cluster manage role-change	180

show cluster ndp global	181
show cluster ndp port-status	181
show cluster neighbour	181
show cluster ntdp global	182
show cluster ntdp port-status	182
show cluster ntdp device	182
show cluster manage role	183

Preface

This Guide is intended for network administrator to provide referenced information about CLI (Command Line Interface). The device mentioned in this Guide stands for LP-SGW2404FP 24 Copper PoE + 4 Fiber Gigabit Managed Switch

Overview of this Guide

Chapter 1: Using the CLI

Provide information about how to use the CLI, CLI Command Modes, Security Levels and some Conventions.

Chapter 2: User Interface

Provide information about the commands used to switch between five CLI Command Modes.

Chapter 3: IEEE 802.1Q VLAN Commands

Provide information about the commands used for configuring IEEE 802.1Q VLAN.

Chapter 4: MAC VLAN Commands

Provide information about the commands used for configuring MAC-Based VLAN.

Chapter 5: Protocol VLAN Commands

Provide information about the commands used for configuring Protocol VLAN.

Chapter 6: Voice VLAN Commands

Provide information about the commands used for configuring Voice VLAN.

Chapter 7: GVRP Commands

Provide information about the commands used for configuring GVRP (GARP VLAN registration protocol).

Chapter 8: LAG Commands

Provide information about the commands used for configuring LAG (Link Aggregation Group).

Chapter 9: LACP Commands

Provide information about the commands used for configuring LACP (Link Aggregation Control Protocol).

Chapter 10: User Manage Commands

Provide information about the commands used for user management.

Chapter 11: Binding Table Commands

Provide information about the commands used for binding the IP address, MAC address, VLAN and the connected Port number of the Host together.

Chapter 12: ARP Inspection Commands

Provide information about the commands used for protecting the switch from the ARP cheating or ARP Attack.

Chapter 13: DoS Defend Command

Provide information about the commands used for DoS defend and detecting the DoS attack.

Chapter 14: IEEE 802.1X Commands

Provide information about the commands used for configuring IEEE 802.1X function.

Chapter 15: Log Commands

Provide information about the commands used for configuring system log.

Chapter 16: SSH Commands

Provide information about the commands used for configuring and managing SSH (Security Shell).

Chapter 17: SSL Commands

Provide information about the commands used for configuring and managing SSL (Secure Sockets Layer).

Chapter 18: Address Commands

Provide information about the commands used for Address configuration.

Chapter 19: System Commands

Provide information about the commands used for configuring the System information and System IP, reboot and reset the switch, upgrade the switch system and other operations.

Chapter 20: Ethernet Configuration Commands

Provide information about the commands used for configuring the Bandwidth Control, Negotiation Mode, and Storm Control for ethernet ports.

Chapter 21: QoS Commands

Provide information about the commands used for configuring the QoS function.

Chapter 22: Port Mirror Commands

Provide information about the commands used for configuring the Port Mirror function.

Chapter 23: Port Isolation Commands

Provide information about the commands used for configuring Port Isolation function.

Chapter 24: PoE Commands

Provide information about the commands used for configuring PoE function.

Chapter 25: ACL Commands

Provide information about the commands used for configuring the ACL (Access Control List).

Chapter 26: MSTP Commands

Provide information about the commands used for configuring the MSTP (Multiple Spanning Tree Protocol).

Chapter 27: IGMP Commands

Provide information about the commands used for configuring the IGMP Snooping (Internet Group Management Protocol Snooping).

Chapter 28: SNMP Commands

Provide information about the commands used for configuring the SNMP (Simple Network Management Protocol) functions.

Chapter 29: LLDP Commands

Provide information about the commands used for configuring LLDP function.

Chapter 30: Cluster Commands

Provide information about the commands used for configuring the Cluster Management function.

Chapter 1 Using the CLI

1.1 Accessing the CLI

You can log on to the switch and access the CLI by the following two methods:

1. Log on to the switch by the console port on the switch.
2. Log on to the switch remotely by a Telnet or SSH connection through an Ethernet port.

1.1.1 Logon by a console port

To log on to the switch by the console port on the switch, please take the following steps:

1. Connect the PCs or Terminals to the console port on the switch by a provided cable.
2. Click **Start** → **All Programs** → **Accessories** → **Communications** → **Hyper Terminal** to open the Hyper Terminal as the figure 1-1 shown.

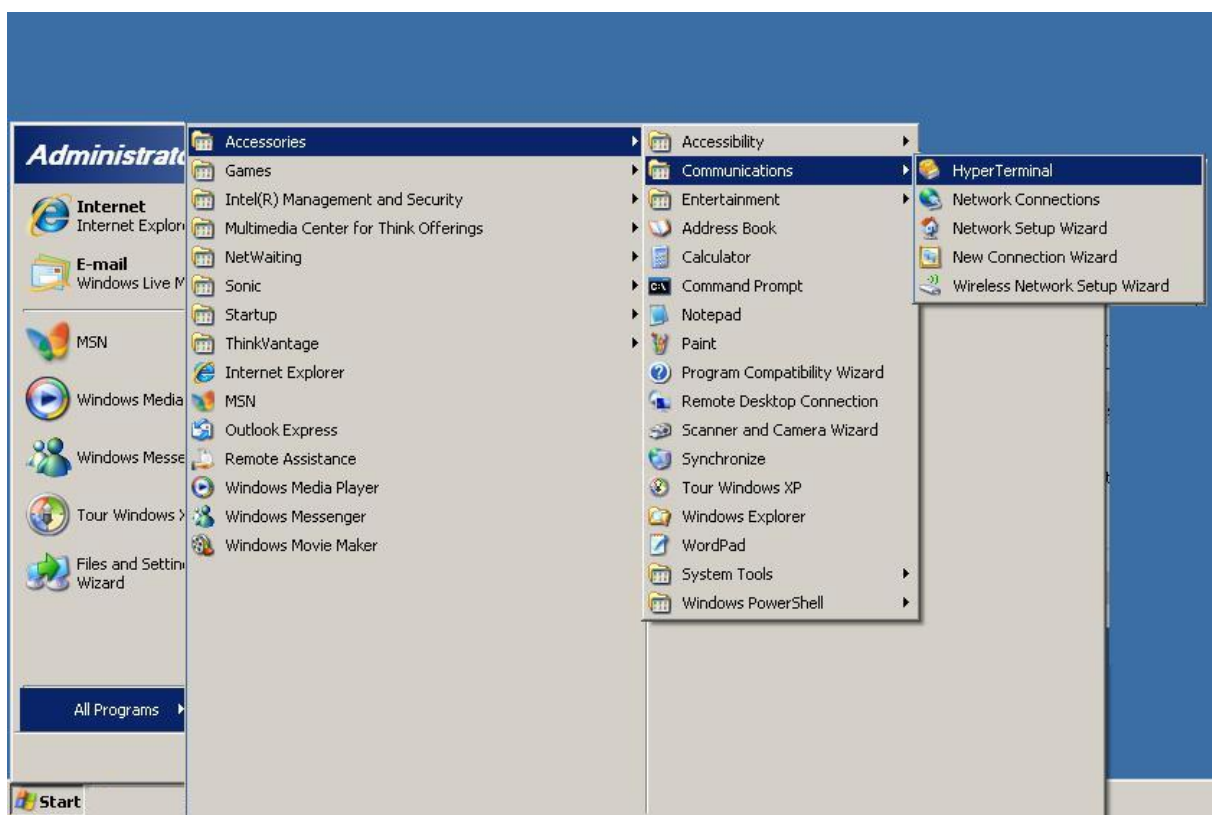


Figure 1-1 Open Hyper Terminal

3. The Connection Description Window will prompt as figure1-2. Enter a name into the Name field and click **OK**.



Figure 1-2 Connection Description

4. Select the port to connect in figure 1-3, and click **OK**.



Figure 1-3 Select the port to connect

5. Configure the ports selected in the step above as the following figure 1-4 shown. Configure **Bits per second** as 38400, **Data bits** as 8, **Parity** as None, **Stop bits** as 1, **Flow control** as None, and then click **OK**.



Figure 1-4 Port Settings

6. Type the User name and Password in the Hyper Terminal window, the factory default value for both of them is admin. The DOS prompt “LP-SGW2402FP>” will appear after pressing the **Enter** button as figure1-5 shown. It indicates that you can use the CLI now.

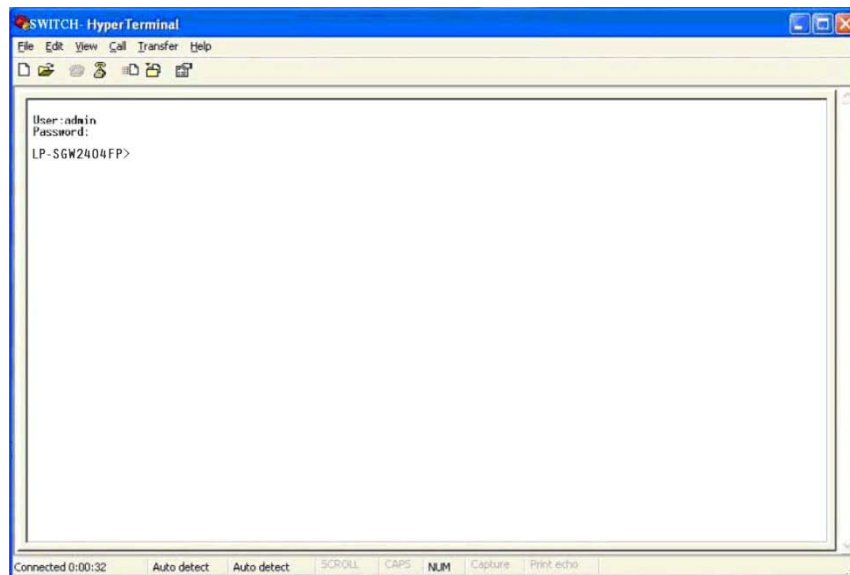


Figure 1-5 Log in the Switch

1.1.2 Logon by Telnet

To log on to the switch by a Telnet connection, please take the following steps:

1. Make sure the switch and the PC are in the same LAN.
2. Click **Start** → **Run** to open the **Run** window.

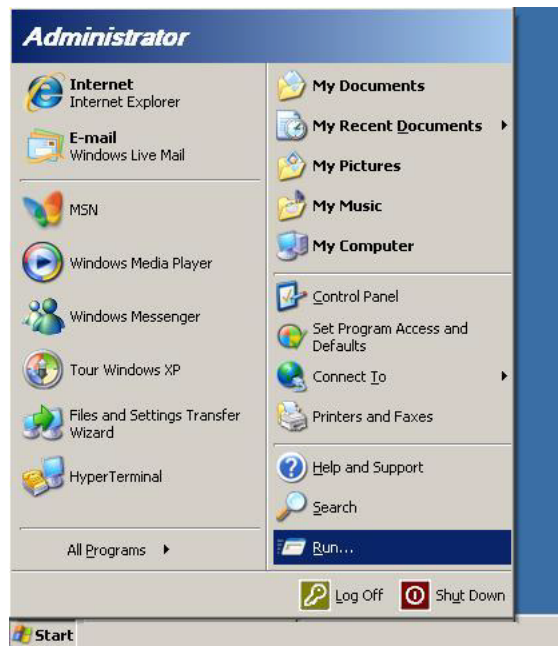


Figure 1-6 Open the Run window

3. Type cmd in the prompt Run window as figure 1-7 and click **OK**.

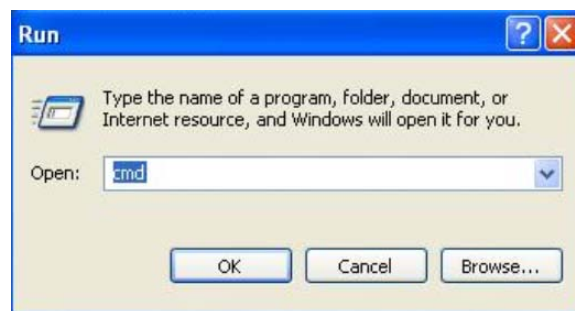


Figure 1-7 Run Window

4. Type telnet 192.168.0.1 in the **command prompt** shown as figure1-8, and press the **Enter** button.

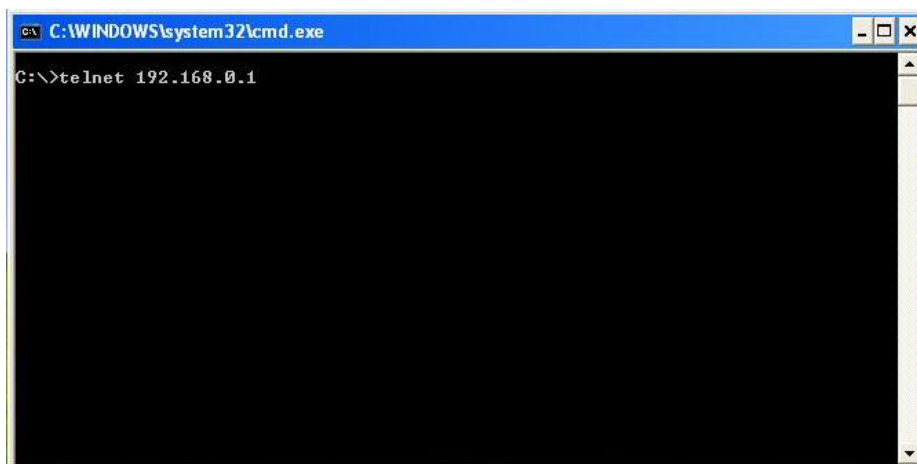


Figure 1-8 Connecting to the Switch

5. Type the User name and Password (the factory default value for both of them is admin) and press the **Enter** button, then you can use the CLI now, which is shown as figure1-9.

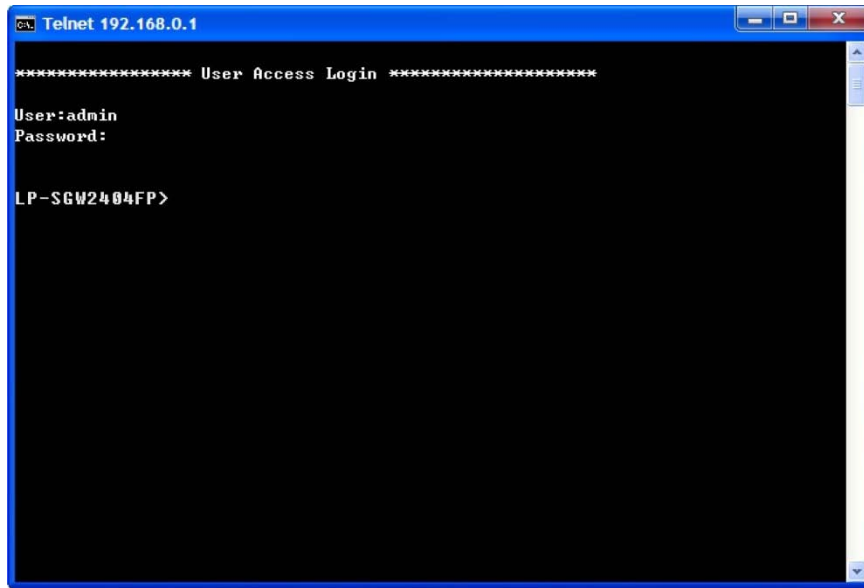
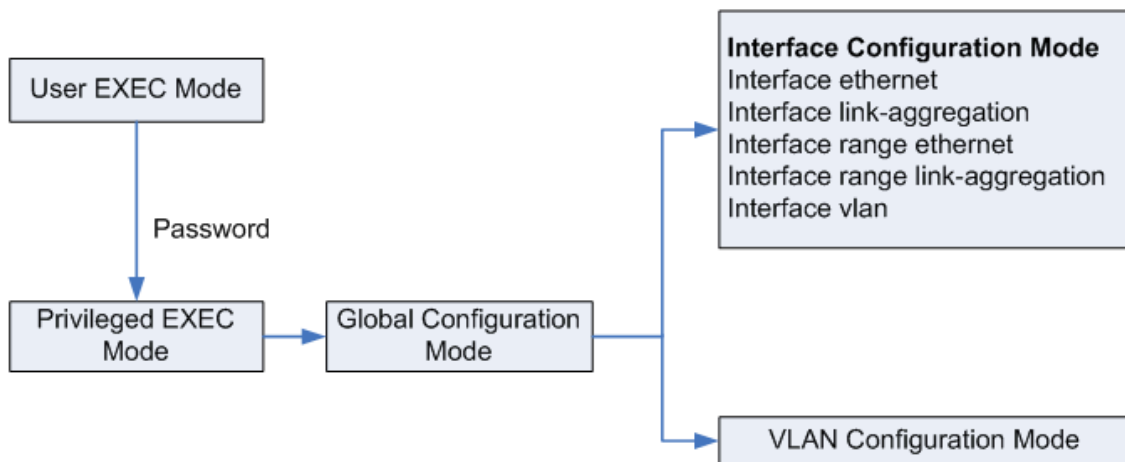


Figure 1-9 Log in the Switch

1.2 CLI Command Modes

The CLI is divided into different command modes: User EXEC Mode, Privileged EXEC Mode, Global Configuration Mode, Interface Configuration Mode and VLAN Database (VLAN Configuration Mode). Interface Configuration Mode can also be divided into Interface Ethernet, Interface link-aggregation and some other modes, which is shown as the following diagram.



The following table gives detailed information about the Accessing path, Prompt of each mode and how to exit the current mode and access the next mode.

Mode	Accessing Path	Prompt	Logout or Access the next mode
User EXEC Mode	Primary mode once it is connected with the switch.	LP-SGW2404FP>	Use the exit command to disconnect the switch (except that the switch is connected through the Console port). Use the enable command to access Privileged EXEC mode.
Privileged EXEC Mode	Use the enable command to enter this mode from User EXEC mode.	LP-SGW2404FP #	Use the exit or disable command to return to User EXEC mode. Enter configure command to access Global Configuration mode.
Global Configuration Mode	Use the configure command to enter this mode from Privileged EXEC mode.	LP-SGW2404FP (config)#	Use the exit or the end command or press Ctrl+Z to return to Privileged EXEC mode. Use the interface type number command to access interface Configuration mode. Use the vlan database to access VLAN Configuration mode.
Interface Configuration Mode	Use the interface type number command to enter this mode from Global Configuration mode.	LP-SGW2404FP (config-if)#	Use the end command or press Ctrl+Z to return to Privileged EXEC mode. Enter exit command to return to Global Configuration mode. A port number must be specified in the interface command.
VLAN Configuration Mode	Use the vlan database command to enter this mode from Global Configuration mode.	LP-SGW2404FP (config-vlan)#	Use the end command or press Ctrl+Z to return to Privileged EXEC mode. Enter the exit command to return to Global configuration mode.

Note:

1. The user is automatically in User EXEC Mode after the connection between the PC and the switch is established by a console port or by a telnet connection.
2. Each command mode has its own set of specific commands. To configure some commands, you should access the corresponding command mode firstly.

- **Global Configuration Mode:** In this mode, global commands are provided, such as the Spanning Tree, Schedule Mode and so on.
 - **Interface Configuration Mode:** In this mode, users can configure one or several ports, different ports corresponds to different commands
 - a). Interface Ethernet: Configure parameters for an Ethernet port, such as Duplex-mode, flow control status.
 - b). Interface range Ethernet: The commands contained are the same as that of the Interface Ethernet. Configure parameters for several Ethernet ports.
 - c). Interface link-aggregation: Configure parameters for a link-aggregation, such as broadcast storm.
 - d). Interface range link-aggregation: Configure parameters for multi-trunks.
 - e). Interface vlan: Configure parameters for the vlan-port.
 - **Vlan Configuration Mode:** In this mode, users can create a VLAN and add a specified port to the VLAN.
3. Some commands are global, that means they can be performed in all modes:
- **show:** Displays all information of switch, for example: statistic information, port information, VLAN information.
 - **history:** Displays the commands history.

1.3 Security Levels

This switch's security is divided into two levels: User level and Admin level.

User level only allows users to do some simple operations in User EXEC Mode; Admin level allows you to monitor, configure and manage the switch in Privileged EXEC Mode, Global Configuration Mode, Interface Configuration Mode and VLAN Configuration Mode.

Users get the privilege to the User level once connecting console port with the switch or logging in by Telnet. However, Guest users are restricted to access the CLI.

Users can enter Privileged EXEC mode from User EXEC mode by using the **enable** command. In default case, no password is needed. In Global Configuration Mode, you can configure password for Admin level by **enable password** command. Once password is configured, you are required to enter it to access Privileged EXEC mode.

1.4 Conventions

1.4.1 Format Conventions

The following conventions are used in this Guide:

- Items in square brackets [] are optional
- Items in braces { } are required
- Alternative items are grouped in braces and separated by vertical bars. For example: **speed** {10 | 100 | 1000 }
- Bold indicates an unalterable keyword. For example: **show logging**
- Normal Font indicates a constant (several options are enumerated and only one can be selected). For example: **switchport type** { access | trunk | general }

- Italic Font indicates a variable (an actual value must be assigned). For example: **bridge aging-time** *aging-time*

1.4.2 Special Characters

You should pay attention to the description below if the variable is a character string:

- These six characters " < > , \ & can not be input.
- If a blank is contained in a character string, single or double quotation marks should be used, for example 'hello world', "hello world", and the words in the quotation marks will be identified as a string. Otherwise, the words will be identified as several strings.

1.4.3 Parameter Format

Some parameters must be entered in special formats which are shown as follows:

- MAC Address must be entered in the format of xx:xx:xx:xx:xx:xx.
- One or several values can be typed for a port-list or a vlan-list using comma to separate. Use a hyphen to designate a range of values, for instance, 1, 3-5, 7 indicates choosing 1, 3, 4, 5, 7.

Chapter 2 User Interface

enable

Description

The **enable** command is used to access Privileged EXEC Mode from User EXEC Mode.

Syntax

enable

Command Mode

User EXEC Mode

Example

If you have set the password to access Privileged EXEC Mode from User EXEC Mode:

```
LP-SGW2404FP>enable
```

```
Enter password :
```

```
LP-SGW2404FP#
```

enable password

Description

The **enable password** command is used to set the password for users to access Privileged EXEC Mode from User EXEC Mode. To return to the default configuration, please use **no enable password** command.

Syntax

enable password *password*

no enable password

Parameter

password — super password, which contains 16 characters at most, composing digits, English letters and underdashes only. By default, it is empty.

Command Mode

Global Configuration Mode

Example

Set the super password as admin to access Privileged EXEC Mode from User EXEC Mode:

```
LP-SGW2404FP(config)# enable password admin
```

disable

Description

The **disable** command is used to return to User EXEC Mode from Privileged EXEC Mode.

Syntax

disable

Command Mode

Privileged EXEC Mode

Example

Return to User EXEC Mode from Privileged EXEC Mode:

```
LP-SGW2404FP# disable
LP-SGW2404FP>
```

configure

Description

The **configure** command is used to access Global Configuration Mode from Privileged EXEC Mode.

Syntax

configure

Command Mode

Privileged EXEC Mode

Example

Access Global Configuration Mode from Privileged EXEC Mode:

```
LP-SGW2404FP# configure
LP-SGW2404FP(config)#
```

exit

Description

The **exit** command is used to return to the previous Mode from the current Mode.

Syntax

exit

Command Mode

Any Configuration Mode

Example

Return to Global Configuration Mode from Interface Configuration Mode, and then return to Privileged EXEC Mode:

```
LP-SGW2404FP(config-if)# exit
```

```
LP-SGW2404FP(config)#exit  
LP-SGW2404FP#
```

end

Description

The **end** command is used to return to Privileged EXEC Mode.

Syntax

```
end
```

Command Mode

Any Configuration Mode

Example

Return to Privileged EXEC Mode from Interface Configuration Mode:

```
LP-SGW2404FP(config-if)#end  
LP-SGW2404FP#
```

Chapter 3 IEEE 802.1Q VLAN Commands

VLAN (Virtual Local Area Network) technology is developed for the switch to divide the LAN into multiple logical LANs flexibly. Hosts in the same VLAN can communicate with each other, regardless of their physical locations. VLAN can enhance performance by conserving bandwidth, and improve security by limiting traffic to specific domains.

vlan database

Description

The **vlan database** command is used to access VLAN Configuration Mode for creating, deleting 802.1Q VLAN and other operations.

Syntax

vlan database

Command Mode

Global Configuration Mode

Example

Access VLAN Configuration Mode:

```
LP-SGW2404FP(config)# vlan database
LP-SGW2404FP(config-vlan)#
```

vlan

Description

The **vlan** command is used to create IEEE 802.1Q VLAN. To delete the IEEE 802.1Q VLAN, please use **no vlan** command.

Syntax

vlan *vlan-id*
no vlan *vlan-id*

Parameter

vlan-id —VLAN ID, ranging from 2 to 4094.

Command Mode

VLAN Configuration Mode

Example

Create a VLAN, the vid of which is 12:

```
LP-SGW2404FP(config)# vlan database
LP-SGW2404FP(config-vlan)#vlan 12
```

interface vlan

Description

The **interface vlan** command is used to access VLAN Interface Mode to configure the specified VLAN.

Syntax

```
interface vlan vlan-id
```

Parameter

vlan-id —VLAN ID, ranging from 1 to 4094.

Command Mode

Global Configuration Mode

Example

Configure the VLAN2:

```
LP-SGW2404FP(config)# interface vlan 2
```

description

Description

The **description** command is used to assign a description string to a VLAN. To clear the description, please use **no description** command.

Syntax

```
description descript  
no description
```

Parameter

descript —String to describe the VLAN, which contains 16 characters at most.

Command Mode

Interface Configuration Mode (interface vlan)

Example

Specify the description string of the VLAN 2 as “vlan 2”:

```
LP-SGW2404FP(config)# interface vlan 2  
LP-SGW2404FP(config-if)#description vlan2
```

switchport type

Description

The **switchport type** command is used to configure the Link Types for the ports.

Syntax

```
switchport type { access | trunk | general }
```

Parameter

access | trunk | general — Link Types. There are three Link Types for the ports.

Command Mode

Interface Configuration Mode (interface ethernet / interface range ethernet)

Example

Specify the Link Type of port 5 as general:

```
LP-SGW2404FP(config)# interface ethernet 5  
LP-SGW2404FP(config-if)#switchport type general
```

switchport allowed vlan

Description

The **switchport allowed vlan** command is used to add the desired port to IEEE 802.1Q VLAN, or to remove a port from the corresponding VLAN.

Syntax

```
switchport allowed vlan add vlan-list  
switchport allowed vlan remove vlan-list
```

Parameter

vlan-list — VLAN ID list, it is multi-optional.

Command Mode

Interface Configuration Mode (interface ethernet / interface range ethernet)

Example

Add port 2 to IEEE 802.1Q VLAN:

```
LP-SGW2404FP(config)# interface ethernet 2  
LP-SGW2404FP(config-if)# switchport allowed vlan add 2
```

switchport pvid

Description

The **switchport pvid** command is used to configure the PVID for the switch ports.

Syntax

```
switchport pvid vlan-id
```

Parameter

vlan-id — VLAN ID, ranging from 1 to 4094.

Command Mode

Interface Configuration Mode (interface ethernet / interface range ethernet)

Example

Specify the PVID of port 2 as 2:

```
LP-SGW2404FP(config)# interface ethernet 2
LP-SGW2404FP(config-if)# switchport pvid 2
```

switchport general egress-rule

Description

The **switchport general egress-rule** command is used to configure the egress-rule of the general port.

Syntax

```
switchport general egress-rule [vlan-id] {untagged | tagged}
```

Parameter

vlan-id — VLAN ID, ranging from 1 to 4094.

untagged | tagged — egress-rule , untagged or tagged

Command Mode

Interface Configuration Mode (interface ethernet / interface range ethernet)

Example

Specify the egress-rule of port 2 in vlan 3 as tagged:

```
LP-SGW2404FP(config)# interface ethernet 2
LP-SGW2404FP(config-if)# switchport general egress-rule 3 tagged
```

show vlan

Description

The **show vlan** command is used to display the information of IEEE 802.1Q VLAN.

Syntax

```
show vlan [vlan-id]
```

Parameter

vlan-id — VLAN ID, ranging from 1 to 4094. By default, display all the information of IEEE 802.1Q VLAN.

Command Mode

Any Configuration Mode

Example

Display the information of vlan 5:

```
LP-SGW2404FP(config)# show vlan 5
```

show interface switchport

Description

The **show interface switchport** command is used to display the IEEE 802.1Q VLAN configuration information of the specified port.

Syntax

```
show interface switchport [port-num]
```

Parameter

port-num — The port number. By default, display the VLAN configuration information of all ports.

Command Mode

Any Configuration Mode

Example

Display the VLAN configuration information of all ports:

```
LP-SGW2404FP(config)# show interface switchport
```

Chapter 4 MAC VLAN Commands

MAC VLAN (Virtual Local Area Network) is the way to classify the VLANs based on MAC Address. A MAC address is relative to a single VLAN ID. The untagged packets and the priority-tagged packets coming from the MAC address will be tagged with this VLAN ID.

mac-vlan add

Description

The **mac-vlan add** command is used to create a MAC-Based VLAN entry.

Syntax

```
mac-vlan add {vlan-id} {mac-addr} [description]
```

Parameter

vlan-id — VLAN ID, ranging from 1 to 4094.

mac-addr — MAC address.

description — Give a description to the MAC address for identification. By default, it is empty.

Command Mode

Global Configuration Mode

Example

Create VLAN 2 named “RD”, and the MAC address is 00:00:00:00:00:01:

```
LP-SGW2404FP(config)# mac-vlan add 2 00:00:00:00:00:01 RD
```

mac-vlan remove

Description

The **mac-vlan remove** command is used to delete the subsistent MAC-Based VLAN entry.

Syntax

```
mac-vlan remove {mac-addr}
```

Parameter

mac-addr — MAC address.

Command Mode

Global Configuration Mode

Example

Delete the existing MAC-Based VLAN entry with the MAC address of 00:00:00:00:00:02:

```
LP-SGW2404FP(config)# mac-vlan remove 00:00:00:00:00:02
```


mac-vlan modify

Description

The **mac-vlan modify** command is used to modify the settings of the subsistent MAC VLAN entry.

Syntax

```
mac-vlan modify {vlan-id} {mac-addr} [description]
```

Parameter

vlan-id — VLAN ID, ranging from 1 to 4094.

mac-addr — MAC address.

description — Give a description to the MAC VLAN entry. You cannot edit this entry if there is no description.

Command Mode

Global Configuration Mode

Example

Modify the VLAN ID of the MAC VLAN entry with the MAC address of 00:00:00:00:00:02 as 12:

```
LP-SGW2404FP(config)# mac-vlan modify 12 00:00:00:00:00:02
```

show mac-vlan

Description

The **show mac-vlan** command is used to display the information of the MAC VLAN entry.

Syntax

```
show mac-vlan
```

Command Mode

Any Configuration Mode

Example

Display the information of the MAC VLAN entry:

```
LP-SGW2404FP(config)# show mac-vlan
```

Chapter 5 Protocol VLAN Commands

Protocol VLAN (Virtual Local Area Network) is the way to classify VLANs based on Protocols. A Protocol is relative to a single VLAN ID. The untagged packets and the priority-tagged packets matching the protocol template will be tagged with this VLAN ID.

protocol-vlan template

Description

The **protocol-vlan template** command is used to create or delete Protocol VLAN template.

Syntax

```
protocol-vlan template add {protocol-name} {ether-type} {frame-type}
protocol-vlan template remove index
```

Parameter

protocol-name — Give a name for the Protocol Template, which contains 8 characters at most.

ether-type — Enter the Ethernet protocol type field in the protocol template, composing 4 Hex integers.

index — The number of the Protocol template. You can get the template corresponding to the number by the **show protocol-vlan template** command.

frame-type — Frame Type for the Protocol Template.

Command Mode

Global Configuration Mode

Example

Create a Protocol VLAN template named “arp” whose Frame-type is ethernet2, Ethernet protocol type is 0806. Delete the Protocol template whose number is 2:

```
LP-SGW2404FP(config)# protocol-vlan template add arp 0806 ethernet2
LP-SGW2404FP(config)# protocol-vlan template remove 2
```

protocol-vlan vlan

Description

The **protocol-vlan vlan** command is used to create a Protocol VLAN entry. To delete a Protocol VLAN entry, please use **no protocol-vlan** command.

Syntax

```
protocol-vlan vlan vid template index member-list
no protocol-vlan entry-id
```

Parameter

vid —VLAN ID , ranging from 1-4094.

index —The number of the Protocol template. You can get the template corresponding to the number by the **show protocol-vlan template** command.

entry-id —The number of the Protocol VLAN . You can get the Protocol VLAN entry corresponding to the number by the **show protocol-vlan vlan** command.

member-list — The port numbers needed to be added in the vlan.

Command Mode

Global Configuration Mode

Example

Create a Protocol VLAN entry, whose index is 1 and vid is 2, and add port 4, 5, 6, 8 in the protocol vlan. Delete the Protocol VLAN entry whose number is 1:

```
LP-SGW2404FP(config)# protocol-vlan vlan 2 template 1 4-6,8
LP-SGW2404FP(config)# no protocol-vlan vlan 1
```

show protocol-vlan template

Description

The **show protocol-vlan template** command is used to display the information of the Protocol VLAN templates.

Syntax

```
show protocol-vlan template
```

Command Mode

Any Configuration Mode

Example

Display the information of the Protocol VLAN templates:

```
LP-SGW2404FP(config)# show protocol-vlan template
```

show protocol-vlan vlan

Description

The **show protocol-vlan vlan** command is used to display the information about Protocol VLAN entry.

Syntax

```
show protocol-vlan vlan
```

Command Mode

Any Configuration Mode

Example

Display information of the protocol-vlan entry:

```
LP-SGW2404FP(config)# show protocol-vlan vlan
```

Chapter 6 Voice VLAN Commands

Voice VLANs are configured specially for voice data stream. By configuring Voice VLANs and adding the ports with voice devices attached to voice VLANs, you can perform QoS-related configuration for voice data, ensuring the transmission priority of voice data stream and voice quality.

voice-vlan enable

Description

The **voice-vlan enable** command is used to enable Voice VLAN function. To disable Voice VLAN function, please use **no voice-vlan enable** command.

Syntax

voice-vlan enable *vlan-id*
no voice-vlan enable

Parameter

vlan-id — VLAN ID, ranging from 2 to 4094.

Command Mode

Global Configuration Mode

Example

Enable the Voice VLAN function for VLAN 2:

```
LP-SGW2404FP(config)# voice-vlan enable 2
```

voice-vlan aging-time

Description

The **voice-vlan aging-time** command is used to set the aging time for a voice VLAN. To restore to the default aging time for the Voice VLAN, please use **no voice-vlan aging-time** command.

Syntax

voice-vlan aging-time *aging-time*
no voice-vlan aging-time

Parameter

aging-time — Aging time (in minutes) to be set for the Voice VLAN. It ranges from 1 to 43200 and the default value is 1440.

Command Mode

Global Configuration Mode

Example

Set the aging time for the Voice VLAN as 2880 minutes:

```
LP-SGW2404FP(config)# voice-vlan aging-time 2880
```

voice-vlan priority

Description

The **voice-vlan priority** command is used to configure the priority for the Voice VLAN. To restore to the default priority, please use **no voice-vlan priority** command.

Syntax

```
voice-vlan priority priority
no voice-vlan priority
```

Parameter

priority — Priority, ranging from 0 to 6, and the default value is 6.

Command Mode

Global Configuration Mode

Example

Configure the priority of the Voice VLAN as 3:

```
LP-SGW2404FP(config)# voice-vlan priority 3
```

voice-vlan oui

Description

The **voice-vlan oui** command is used to create or delete Voice VLAN OUI.

Syntax

```
voice-vlan oui add mac-addr mask mask-addr [description]
voice-vlan oui remove mac-addr
```

Parameter

mac-addr — The OUI address of the voice device.

mask-addr — The OUI address mask of the voice device.

description — Give a description to the OUI for identification which contains 16 characters at most. By default, it is empty.

Command Mode

Global Configuration Mode

Example

Create a Voice VLAN OUI decrypted as "SWITCHPHONE" with the MAC address 00:27:11:00:00:01 and the mask address FF:FF:FF:00:00:00. And then delete the Voice VLAN OUI with the MAC address 00:27:11:11:00:01:

```
LP-SGW2404FP(config)# voice-vlan oui add 00:27:11:00:00:01 mask
FF:FF:FF:00:00:00 "SWITCH Phone"
LP-SGW2404FP(config)# voice-vlan oui remove 00:27:11:11:00:01
```

switchport voice-vlan mode

Description

The **switchport voice-vlan mode** command is used to configure the Voice VLAN mode for the Ethernet port.

Syntax

```
switchport voice-vlan mode { manual | auto }
```

Parameter

manual | auto — Port mode.

Command Mode

Interface Configuration Mode (interface ethernet / interface range ethernet)

Example

Configure Ethernet port 2 to operate in the manual voice VLAN mode:

```
LP-SGW2404FP(config)# interface ethernet 2
LP-SGW2404FP(config-if)# switchport voice-vlan mode manual
```

switchport voice-vlan security

Description

The **switchport voice-vlan security** command is used to configure the Voice VLAN security mode.

Syntax

```
switchport voice-vlan security {disable | enable}
```

Parameter

disable | enable — disable/enable the security mode for the specified port .

Command Mode

Interface Configuration Mode (interface ethernet / interface range ethernet)

Example

Enable Ethernet port 2 for the Voice VLAN security mode:

```
LP-SGW2404FP(config)# interface ethernet 2
LP-SGW2404FP(config-if)# switchport voice-vlan security enable
```

show voice-vlan global

Description

The **show voice-vlan global** command is used to display the global configuration information of Voice VLAN.

Syntax

```
show voice-vlan global
```

Command Mode

Any Configuration Mode

Example

Display the configuration information of Voice VLAN globally:

```
LP-SGW2404FP(config)# show voice-vlan global
```

show voice-vlan oui

Description

The **show voice-vlan oui** command is used to display the configuration information of Voice VLAN OUI.

Syntax

```
show voice-vlan oui
```

Command Mode

Any Configuration Mode

Example

Display the configuration information of Voice VLAN OUI:

```
LP-SGW2404FP(config)# show voice-vlan oui
```

show voice-vlan switchport

Description

The **show voice-vlan switchport** command is used to display the configuration information of the port in the Voice VLAN.

Syntax

```
show voice-vlan switchport [port]
```

Parameter

port — Ethernet port. By default, it will display the configuration information of all the ports in the Voice VLAN.

Command Mode

Any Configuration Mode

Example

Display the configuration information of all the ports in the Voice VLAN:

```
LP-SGW2404FP(config)# show voice-vlan switchport
```

Chapter 7 GVRP Commands

GVRP (GARP VLAN registration protocol) is an implementation of GARP (generic attribute registration protocol). GVRP allows the switch to automatically add or remove the VLANs via the dynamic VLAN registration information and propagate the local VLAN registration information to other switches, without having to individually configure each VLAN.

gvrp

Description

The **gvrp** command is used to enable the GVRP function globally. To disable the GVRP function, please use **no gvrp** command.

Syntax

```
gvrp
no gvrp
```

Command Mode

Global Configuration Mode

Example

Enable the GVRP function globally:

```
LP-SGW2404FP(config)# gvrp
```

gvrp (interface)

Description

The **gvrp(interface)** command is used to enable the GVRP function for the desired port. To disable the GVRP function of this port, please use **no gvrp** command. The GVRP feature can only be enabled for the trunk-type ports.

Syntax

```
gvrp
no gvrp
```

Command Mode

Interface Configuration Mode (interface ethernet / interface range ethernet)

Example

Enable the GVRP function for ports 2-6:

```
LP-SGW2404FP(config)# interface range ethernet 2-6
LP-SGW2404FP(config-if)# gvrp
```

gvrp registration

Description

The **gvrp registration** command is used to configure the GVRP registration type on the desired port. To restore to the default value, please use **no gvrp registration** command.

Syntax

```
gvrp registration { normal | fixed | forbidden }
no gvrp registration
```

Parameter

normal | fixed | forbidden — Registration mode. By default, the registration mode is normal.

Command Mode

Interface Configuration Mode (interface ethernet / interface range ethernet)

Example

Configure the GVRP registration mode on the port 2-6 to fixed:

```
LP-SGW2404FP(config)# interface range ethernet 2-6
LP-SGW2404FP(config-if)# gvrp registration fixed
```

gvrp timer

Description

The **gvrp timer** command is used to set a GVRP timer for the desired port. To restore to the default setting of a GARP timer, please use **no gvrp timer** command.

Syntax

```
gvrp timer { leaveall | join | leave } {value}
no gvrp timer [leaveall | join | leave]
```

Parameter

leaveall | join | leave — They are the three timers: leave All、join and leave. Once the LeaveAll Timer is set, the port with GVRP enabled can send a LeaveAll message after the timer times out, so that other GARP ports can re-register all the attribute information. After that, the LeaveAll timer will start to begin a new cycle. To guarantee the transmission of the Join messages, a GARP port sends each Join message two times. The Join Timer is used to define the interval between the two sending operations of each Join message. Once the Leave Timer is set, the GARP port receiving a Leave message will start its Leave timer, and unregister the attribute information if it does not receive a Join message again before the timer times out.

value — The value of the timer. The LeaveAll Timer ranges from 1000 to

30000 centiseconds and the default value is 1000. The Join Timer ranges from 20 to 1000 centiseconds and the default value is 20. The Leave Timer ranges from 60 to 3000 centiseconds and the default value is 60.

Command Mode

Interface Configuration Mode (interface ethernet / interface range ethernet)

Example

Set the GARP leaveall timer of port 6 to 2000 centiseconds and restore to the join timer of it to the default value:

```
LP-SGW2404FP(config)# interface ethernet 6
LP-SGW2404FP(config-if)# gvrp timer leaveall 2000
LP-SGW2404FP(config-if)# no gvrp timer join
```

show gvrp global

Description

The **show gvrp global** command is used to display the global GVRP status.

Syntax

```
show gvrp global
```

Command Mode

Any Configuration Mode

Example

Display the global GVRP status:

```
LP-SGW2404FP(config)# show gvrp global
```

show gvrp interface

Description

The **show gvrp interface** command is used to display the GVRP configuration information of the specified Ethernet ports.

Syntax

```
show gvrp interface [ethernet port-num]
```

Parameter

port-num —The Ethernet port number. By default, the GVRP configuration information of all the Ethernet ports is displayed.

Command Mode

Any Configuration Mode

Example

Display the GVRP configuration information of all the Ethernet ports:

```
LP-SGW2404FP(config)# show gvrp interface
```

Chapter 8 LAG Commands

LAG (Link Aggregation Group) is to combine a number of ports together to make a single high-bandwidth data path, which can highly extend the bandwidth. The bandwidth of the LAG is the sum of bandwidth of its member port.

interface link-aggregation

Description

The **interface link-aggregation** command is used to access the Interface Link-aggregation Mode. To delete the aggregation group, please use **no interface link-aggregation** command.

Syntax

```
interface link-aggregation group-number
no interface link-aggregation group-number
```

Parameter

group-number —The LAG number, ranging from 1 to 14.

Command Mode

Global Configuration Mode

Example

Access the Interface Link-aggregation Mode and configure the aggregation group 1:

```
LP-SGW2404FP(config)# interface link-aggregation 1
LP-SGW2404FP(config-if)#
```

interface range link-aggregation

Description

The **interface range link-aggregation** command is used to access the Interface range Link-aggregation Mode, and you can configure some aggregation groups at the same time. To delete the aggregation group, please use **no interface range link-aggregation** command.

Syntax

```
interface range link-aggregation group-list
no interface range link-aggregation group-list
```

Command Mode

Global Configuration Mode

Parameter

group-list —The aggregation group list. You can configure some

aggregation groups at the same time.

Example

Access the Interface range Link-aggregation Mode and configure the aggregation group 1,4-6:

```
LP-SGW2404FP(config)# interface range link-aggregation 1,4-6
LP-SGW2404FP(config-if)#
```

link-aggregation

Description

The **link-aggregation** command is used to add the current Ethernet port to an aggregation group. To remove the current Ethernet port from the aggregation group, please use **no link-aggregation** command.

Syntax

```
link-aggregation group-num
no link-aggregation
```

Parameter

group-num —The LAG number, ranging from 1 to 14.

Command Mode

Interface Configuration Mode (interface ethernet / interface range ethernet)

Example

Add the Ethernet port 2-4 to aggregation group 1:

```
LP-SGW2404FP(config)# interface range ethernet 2-4
LP-SGW2404FP(config-if)#link-aggregation 1
```

link-aggregation hash-algorithm

Description

The **link-aggregation hash-algorithm** command is used to configure the Aggregate Arithmetic for LAG.

Syntax

```
link-aggregation hash-algorithm {src_dst_mac | src_dst_ip }
```

Parameter

src_dst_mac — The source and destination MAC addresses.

src_dst_ip —The source and destination IP addresses.

Command Mode

Global Configuration Mode

Example

Configure the Aggregate Arithmetic for LAG as src_dst_mac:

```
LP-SGW2404FP(config)# link-aggregation hash-algorithm src_dst_mac
```

description

Description

The **description** command is used to set a description for an aggregation group. To remove the description of an aggregation group, please use **no description** command.

Syntax

```
description description  
no description
```

Parameter

description—The description of LAG, which contains 16 characters at most.

Command Mode

Interface Configuration Mode (interface link-aggregation)

Example

Set the description "movie server" for aggregation group1:

```
LP-SGW2404FP(config)# interface link-aggregation 1  
LP-SGW2404FP(config-if)# description movie server
```

show interfaces link-aggregation

Description

The **show interfaces link-aggregation** command is used to display the configuration information of the Aggregate Arithmetic and the aggregation groups.

Syntax

```
show interface link-aggregation [group-num]
```

Parameter

group-num —The LAG number, ranging from 1 to 14. By default, the LAG configuration information of all the Ethernet ports is displayed.

Command Mode

Any Configuration Mode

Example

Display the LAG configuration information of all the Ethernet ports:

```
LP-SGW2404FP(config)#show interface link-aggregation
```


Chapter 9 LACP Commands

LACP (Link Aggregation Control Protocol) is defined in IEEE802.3ad and enables the dynamic link aggregation and disaggregation by exchanging LACP packets with its partner. The switch can dynamically group similarly configured ports into a single logical link, which will highly extend the bandwidth and flexibly balance the load.

lacp system-priority

Description

The **lacp system-priority** command is used to set global lacp system priority.

Syntax

Lacp system-priority *value*

Command Mode

Global Configuration Mode

Parameter

value — system-priority, ranging from 0 to 65535. By default, the value is 32768.

Example

Set global lacp system priority 1024:

```
LP-SGW2404FP(config)# lacp system-priority 1024
```

lacp admin-key

Description

The **lacp admin-key** command is used to configure the admin key. To restore to the default value, please use **no lacp admin-key** command.

Syntax

lacp admin-key *value*

no lacp admin-key

Parameter

value — admin key, ranging from 0 to 65535. By default, the value is 1.

Command Mode

Interface Configuration Mode (interface ethernet / interface range ethernet)

Example

Configure the admin key of port 1 as 1024:

```
LP-SGW2404FP(config)# interface ethernet 1
```

```
LP-SGW2404FP(config-if)# lacp admin-key 1024
```

lacp port-priority

Description

The **lacp port-priority** command is used to set the port priority for a port. To restore to the default priority, please use **no lacp port-priority** command.

Syntax

```
lacp port-priority value  
no lacp port-priority
```

Parameter

value — System priority, ranging from 0 to 65535. By default, the value is 32768.

Command Mode

Interface Configuration Mode (interface ethernet / interface range ethernet)

Example

Set the system priority of port 1 to1024:

```
LP-SGW2404FP(config)# interface ethernet 1  
LP-SGW2404FP(config-if)# lacp port-priority 1024
```

show lacp interface

Description

The **show lacp interface** command is used to display the port configuration information of LACP.

Syntax

```
show lacp interface [ethernet port-num]
```

Parameter

port-num — The Ethernet port number. By default, display the configuration information of all the Ethernet ports.

Command Mode

Any Configuration Mode

Example

Display the configuration information of all the Ethernet ports:

```
LP-SGW2404FP(config)# show lacp interface
```

show lacp system-priority

Description

The **show lacp system-priority** command is used to display the global system priority value of LACP.

Syntax

```
show lacp system-priority
```

Command Mode

Any Configuration Mode

Example

Display the global system priority value of LACP:

```
LP-SGW2404FP(config)# show lacp system-priority
```

Chapter 10 User Manage Commands

User Manage Commands are used to configure the user name and password for users to log on to the Web management page with a certain access level so as to protect the settings of the switch from being randomly changed.

user add

Description

The **user add** command is used to add a new user.

Syntax

```
user add user-name password password confirm-password confirm-password {guest | admin} {disable | enable}
```

Parameter

user-name ——Type a name for users' login, which contains 16 characters at most, composing digits, English letters and underdashes only.

password ——Type a password for users' login, which contains 16 characters at most, composing digits, English letters and underdashes only.

confirm-password ——Type the password again.

guest | *admin* —— Access level.

Guest: only can view the settings without the right to edit and modify.

Admin: can edit, modify and view all the settings of different functions.

disable | *enable* —— Enable/disable the user.

Command Mode

Global Configuration Mode

Example

Add and enable a new admin user named lanpro, and of which the password is password:

```
LP-SGW2404FP(config)#user add lanpro password password confirm-  
password password admin enable
```

user remove

Description

The user remove command is used to delete an existing user. The current user can't be deleted by itself.

Syntax

```
user remove user-name
```

Parameter

user-name — An existing user name.

Command Mode

Global Configuration Mode

Example

Delete the user named “lanpro”:

```
LP-SGW2404FP(config)# user remove lanpro
```

user modify status

Description

The **user modify status** command is used to modify the status of the existing user. The current user can't be modified by itself.

Syntax

```
user modify status user-name {disable | enable}
```

Parameter

user-name — The existing user name.

disable | enable — Disable/enable the user.

Command Mode

Global Configuration Mode

Example

Enable the status of user “lanpro”:

```
LP-SGW2404FP(config)# user modify status lanpro enable
```

user modify type

Description

The **user modify type** command is used to modify the access level for the existing user. The current user can't be modified by itself.

Syntax

```
user modify type user-name {guest | admin}
```

Parameter

user-name — The existing user name.

guest | admin — Access level. Guest: limited user; admin: manager.

Command Mode

Global Configuration Mode

Example

Change the access level of lanpro to admin:

```
LP-SGW2404FP(config)# user modify type lanpro admin
```

user modify password

Description

The **user modify password** command is used to modify the password for the existing user.

Syntax

```
user modify password user-name old-password new-password confirm-password
```

Parameter

user-name — The existing user name.

old-password — The old password.

new-password — The new password, which contains 16 characters at most, composing digits, English letters and underdashes only.

confirm-password — Type the new password again.

Command Mode

Global Configuration Mode

Example

Modify the password of lanpro as newpwd:

```
LP-SGW2404FP(config)# user modify password lanpro password newpwd  
newpwd
```

user access-control disable

Description

The **user access-control disable** command is used to cancel the user access-control.

Syntax

```
user access-control disable
```

Command Mode

Global Configuration Mode

Example

Cancel the user access-control:

```
LP-SGW2404FP(config)# user access-control disable
```

user access-control ip-based

Description

The **user access-control ip-based** command is used to limit the IP-range of the users for login. Only the users within the IP-range you set here are allowed for login.

Syntax

user access-control ip-based *ip-addr ip-mask*

Parameter

ip-addr / ip-mask — The source IP address. Only the users within the IP-range you set here are allowed for login..

Command Mode

Global Configuration Mode

Example

Enable the access-control of the user whose Ip address is 192.168.0.148:

```
LP-SGW2404FP(config)#user access-control ip-based 192.168.0.148
255.255.255.255
```

user access-control mac-based

Description

The **user access-control mac-based** command is used to limit the MAC Address of the users for login. Only the user with this MAC Address you set here is allowed for login

Syntax

user access-control mac-based *mac-addr*

Parameter

mac-addr — The source MAC address.

Command Mode

Global Configuration Mode

Example

Enable the access-control of the user whose MAC address is 00:27:11:0A:00:01:

```
LP-SGW2404FP(config)# user access-control mac-based
00:27:11:0A:00:01
```

user access-control port-based

Description

The **user access-control port-based** command is used to limit the ports for login. Only the users connected to these ports you set here are allowed for login.

Syntax

user access-control port-based *port-list*

Parameter

port-list — The Ethernet port numbers. You can appoint 5 ports at most.

Command Mode

Global Configuration Mode

Example

Enable the access-control of the ports 2, port4, port5, port6,and port8:

```
LP-SGW2404FP(config)# user access-control port-based 2, 4 - 6, 8
```

user max-number

Description

The **user max-number** command is used to configure the number of the users logging on at the same time. To cancel the limit to the numbers of the users logging in, please use **no user max-number** command.

Syntax

user max-number *admin-num* *guest-num*

no user max-number

Parameter

admin-num — The maximum number of the users logging on as Admin, ranging from 1 to 16. The total number of Admin and Guests should be less than 16.

guest-num — The maximum number of the users logging on as Guest, ranging from 0 to 15. The total number of Admin and Guest should be less than 16.

Command Mode

Global Configuration Mode

Example

Configure the number of the users as Admin and Guest logging on as 5 and 3:

```
LP-SGW2404FP(config)# user max-num 5 3
```

user idle-timeout

Description

The **user idle-timeout** command is used to configure the timeout time of the switch. To restore to the default timeout time, please use **no user idle-timeout** command.

Syntax

user idle-timeout *minutes*
no user idle-timeout

Parameter

minutes —The timeout time, ranging from 5 to 30 in minutes. By default, the value is 10.

Command Mode

Global Configuration Mode

Example

Configure the timeout time of the switch as 15 minutes:

```
LP-SGW2404FP(config)# user idle-timeout 15
```

show user account-list

Description

The **show user account-list** command is used to display the information of the current users.

Syntax

show user account-list

Command Mode

Any Configuration Mode

Example

Display the information of the current users:

```
LP-SGW2404FP(config)# show user account-list
```

show user configuration

Description

The **user configuration** command is used to display the security configuration information of the users, including access-control, max-number and the idle-timeout, etc.

Syntax

show user configuration

Command Mode

Any Configuration Mode

Example

Display the security configuration information of the users:

```
LP-SGW2404FP(config)# show user configuration
```

Chapter 11 Binding Table Commands

You can bind the IP address, MAC address, VLAN and the connected Port number of the Host together, which can be the condition for the ARP Inspection to filter the packets.

binding-table user-bind

Description

The **binding-table user-bind** command is used to bind the IP address, MAC address, VLAN ID and the Port number together manually. You can manually bind the IP address, MAC address, VLAN ID and the Port number together in the condition that you have got the related information of the Hosts in the LAN.

Syntax

```
binding-table user-bind hostname ip-addr mac-addr vlan vid port port-num
{none | arp-detection}
```

Parameter

hostname —— The Host Name, which contains 20 characters at most.

ip-addr —— The IP Address of the Host.

mac-addr —— The MAC Address of the Host.

vid —— The VLAN ID needed to be bound, ranging from 1 to 4094.

port-num —— The number of port connected to the Host.

none | arp-detection —— Disable or Enable ARP detection for the entry.

Command Mode

Global Configuration Mode

Example

Bind an ACL entry with the IP is 192.168.0.1, MAC is 00:00:00:00:00:01, VLAN ID is 2 and the Port number is 5 manually. And then enable the entry for the ARP detection.:

```
LP-SGW2404FP(config)# binding-table user-bind host1 192.168.0.1
00:00:00:00:00:01 vlan 2 port 5 arp-detection
```

binding-table remove

Description

The **binding-table remove** command is used to delete the IP-MAC -VID-PORT entry from the binding table.

Syntax

```
binding-table remove index idx
```

Parameter

idx — The entry number needed to be deleted. You can use the **show binding-table** command to get the *idx*. Pay attention to that, the entry number is the actual number in the binding table not arranged in an order.

Command Mode

Global Configuration Mode

Example

Delete the IP-MAC –VID-PORT entry with the index 5:

```
LP-SGW2404FP(config)# binding-table remove index 5
```

dhcp-snooping

Description

The **dhcp-snooping** command is used to enable the DHCP-snooping function for the switch. To disable the DHCP-snooping function, please use **no dhcp-snooping** command. DHCP Snooping functions to monitor the process of the Host obtaining the IP address from DHCP server, and record the IP address, MAC address, VLAN and the connected Port number of the Host for automatic binding.

Syntax

```
dhcp-snooping
no dhcp-snooping
```

Command Mode

Global Configuration Mode

Example

Enable the DHCP-snooping function globally:

```
LP-SGW2404FP(config)# dhcp-snooping
```

dhcp-snooping global

Description

The **dhcp-snooping global** command is used to configure the DHCP snooping globally. To restore to the default value, please use **no dhcp-snooping global** command.

Syntax

```
dhcp-snooping global [global-rate global-rate] [dec-threshold dec-threshold] [dec-rate dec-rate]
no dhcp-snooping global
```

Parameter

global-rate — The value to specify the maximum amount of DHCP

messages that can be forwarded by the switch per second. The excessive messages will be discarded. The options are 0/10/20/30/40/50 (packet/second). By default, it is 0 standing for disable.

dec-threshold —The value to specify the minimum transmission rate of the Decline packets to trigger the Decline protection for the specific port. The options are 0/5/10/15/20/25/30 (packet/second). By default, it is 0 standing for disable.

dec-rate —The value to specify the Decline Flow Control. The traffic flow of the corresponding port will be limited to be this value if the transmission rate of the Decline packets exceeds the Decline Threshold. The options are 5/10/15/20/25/30 (packet/second). By default, it is 5.

Command Mode

Global Configuration Mode

Example

Configure the Global Flow Control as 30pps, the Decline Threshold as 20 pps, Decline Flow Control as 20 pps for DHCP Snooping

```
LP-SGW2404FP(config)# dhcp-snooping global global-rate 30 dec -
threshold 20 dec-rate 20
```

dhcp-snooping information enable

Description

The **dhcp-snooping information enable** command is used to enable the Option 82 function of DHCP Snooping. To disable the Option 82 function, please use **no dhcp-snooping information enable** command.

Syntax

```
dhcp-snooping information enable
no dhcp-snooping information enable
```

Command Mode

Global Configuration Mode

Example

Enable the Option 82 function of DHCP Snooping:

```
LP-SGW2404FP(config)# dhcp-snooping information enable
```

dhcp-snooping information strategy

Description

The **dhcp-snooping information strategy** command is used to select the operation for the Option 82 field of the DHCP request packets from the Host. To restore to the default option, please use **no dhcp-snooping information strategy** command.

Syntax

```
dhcp-snooping information strategy {keep | replace | drop}
no dhcp-snooping information strategy
```

Parameter

keep —Indicates to keep the Option 82 field of the packets. It is the default option.

replace —Indicates to replace the Option 82 field of the packets with the switch defined one.

drop —Indicates to discard the packets including the Option 82 field

Command Mode

Global Configuration Mode

Example

Replace the Option 82 field of the packets with the switch defined one and then send out:

```
LP-SGW2404FP(config)# dhcp-snooping information strategy replace
```

dhcp-snooping information user-defined

Description

The **dhcp-snooping information user-defined** command is used to permit users to define the Option 82. To disable the function, please use **no dhcp-snooping information user-defined** command.

Syntax

```
dhcp-snooping information user-defined
no dhcp-snooping information user-defined
```

Command Mode

Global Configuration Mode

Example

Permit users to define the Option 82:

```
LP-SGW2404FP(config)# dhcp-snooping information user-defined
```

dhcp-snooping information remote-id

Description

The **dhcp-snooping information remote-id** command is used to configure the sub-option Remote ID for the customized Option 82.

Syntax

```
dhcp-snooping information remote-id string
```

Parameter

string —Enter the sub-option Remote ID, which contains 32 characters at most.

Command Mode

Global Configuration Mode

Example

Configure the sub-option Remote ID for the customized Option 82 as lanpro:

```
LP-SGW2404FP(config)# dhcp-snooping information remote-id lanpro
```

dhcp-snooping information circuit-id

Description

The **dhcp-snooping information circuit-id** command is used to configure the sub-option Circuit ID for the customized Option 82.

Syntax

dhcp-snooping information circuit-id *string*

Parameter

string —Enter the sub-option Circuit ID, which contains 32 characters at most.

Command Mode

Global Configuration Mode

Example

Configure the sub-option Circuit ID for the customized Option 82 as lanpro:

```
LP-SGW2404FP(config)# dhcp-snooping information circuit-id lanpro
```

dhcp-snooping trusted

Description

The **dhcp-snooping trusted** command is used to configure a port to be a Trusted Port. Only the Trusted Port can receive the DHCP packets from DHCP servers. To turn the port back to a distrusted port, please use **no dhcp-snooping trusted** command.

Syntax

dhcp-snooping trusted
no dhcp-snooping trusted

Command Mode

Interface Configuration Mode (interface ethernet / interface range ethernet)

Example

Configure the port 2 to be a Trusted Port:

```
LP-SGW2404FP(config)# interface ethernet 2
LP-SGW2404FP(config-if)# dhcp-snooping trusted
```

dhcp-snooping mac-verify

Description

The **dhcp-snooping mac-verify** command is used to enable the MAC Verify feature. To disable the MAC Verify feature, please use **no dhcp-snooping mac-verify** command. There are two fields of the DHCP packet containing the MAC address of the Host. The MAC Verify feature is to compare the two fields and discard the packet if the two fields are different.

Syntax

```
dhcp-snooping mac-verify
no dhcp-snooping mac-verify
```

Command Mode

Interface Configuration Mode (interface ethernet / interface range ethernet)

Example

Enable the MAC Verify feature for the port 2:

```
LP-SGW2404FP(config)# interface ethernet 2
LP-SGW2404FP(config-if)# dhcp-snooping mac-verify
```

dhcp-snooping rate-limit

Description

The **dhcp-snooping rate-limit** command is used to enable the Flow Control feature for the DHCP packets. The excessive DHCP packets will be discarded. To restore to the default configuration, please use **no dhcp-snooping rate-limit** command.

Syntax

```
dhcp-snooping rate-limit value
no dhcp-snooping rate-limit
```

Parameter

value —The value of Flow Control. The options are 0/5/10/15/20/25/30 (packet/second). The default value is 0, which stands for disable.

Command Mode

Interface Configuration Mode (interface ethernet / interface range ethernet)

Example

Set the Flow Control of port 2 as 20 pps:


```
LP-SGW2404FP(config)# interface ethernet 2
LP-SGW2404FP(config-if)# dhcp-snooping rate-limit 20
```

dhcp-snooping decline

Description

The **dhcp-snooping decline** command is used to enable the Decline Protect feature. To disable the Decline Protect feature, please use **no dhcp-snooping decline** command.

Syntax

```
dhcp-snooping decline
no dhcp-snooping decline
```

Command Mode

Interface Configuration Mode (interface ethernet / interface range ethernet)

Example

Enable the Decline Protect feature of port 2:

```
LP-SGW2404FP(config)# interface ethernet 2
LP-SGW2404FP(config-if)# dhcp-snooping decline
```

show binding-table

Description

The **show binding-table** command is used to display the IP-MAC-VID-PORT binding table.

Syntax

```
show binding-table
```

Command Mode

Any Configuration Mode

Example

Display the IP-MAC-VID-PORT binding table:

```
LP-SGW2404FP(config)# show binding-table
```

show dhcp-snooping global

Description

The **show dhcp-snooping global** command is used to display the global configuration of DHCP Snooping.

Syntax

```
show dhcp-snooping global
```

Command Mode

Any Configuration Mode

Example

Display the configuration of DHCP Snooping globally:

```
LP-SGW2404FP(config)# show dhcp-snooping global
```

show dhcp-snooping information

Description

The **show dhcp-snooping information** command is used to display the Option 82 configuration of DHCP Snooping.

Syntax

```
show dhcp snooping information
```

Command Mode

Any Configuration Mode

Example

Display the Option 82 configuration of DHCP Snooping:

```
LP-SGW2404FP(config)# show dhcp-snooping information
```

show dhcp-snooping interface

Description

The **show dhcp-snooping interface** command is used to display the interface configuration of DHCP Snooping.

Syntax

```
show dhcp snooping interface [ethernet port-num]
```

Parameter

port-num — The number of the switch port. By default, it will display the configuration of all the ports.

Command Mode

Any Configuration Mode

Example

Display the interface configuration of all the ports:

```
LP-SGW2404FP(config)# show dhcp-snooping interface
```

Chapter 12 ARP Inspection Commands

ARP (Address Resolution Protocol) Detect function is to protect the switch from the ARP cheating, such as the Network Gateway Spoofing and Man-In-The-Middle Attack, etc.

arp detection (global)

Description

The **arp detection (global)** command is used to enable the ARP Detection function globally. To disable the ARP Detection function, please use **no arp detection** command.

Syntax

```
arp detection
no arp detection
```

Command Mode

Global Configuration Mode

Example

Enable the ARP Detection function globally:

```
LP-SGW2404FP(config)# arp detection
```

arp detection trust-port

Description

The **arp detection trust-port** command is used to configure the port for which the ARP Detect function is unnecessary as the Trusted Port. To clear the Trusted Port list, please use **no arp detection trust-port** command. The specific ports, such as up-linked port, routing port and LAG port, should be set as Trusted Port. To ensure the normal communication of the switch, please configure the ARP Trusted Port before enabling the ARP Detect function.

Syntax

```
arp detection trust-port port-list
no arp detection trust-port
```

Parameter

port-list —The specified Trusted Port list.

Command Mode

Global Configuration Mode

Example

Configure the ports 2-4,5-8 as the Trusted Port:

```
LP-SGW2404FP(config)# arp detection trust-port 2-4,5-8
```

arp detection (interface)

Description

The **arp detection** (interface) command is used to enable the ARP Defend function. To disable the **arp detection** function, please use no arp detection command. ARP Attack flood produces lots of ARP Packets, which will occupy the bandwidth and slow the network speed extremely. With the ARP Defend enabled, the switch can terminate receiving the ARP packets for 300 seconds when the transmission speed of the legal ARP packet on the port exceeds the defined value so as to avoid ARP Attack flood.

Syntax

```
arp detection
no arp detection
```

Command Mode

Interface Configuration Mode (interface ethernet / interface range ethernet)

Example

Enable the arp defend function for the ports 2-6:

```
LP-SGW2404FP(config)# interface range ethernet 2-6
LP-SGW2404FP(config-if)# arp detection
```

arp detection limit-rate

Description

The **arp detection limit-rate** command is used to configure the speed. The switch can terminate receiving the ARP packets for 300 seconds when the transmission speed of the legal ARP packet on the port exceeds the defined value. To restore to the default speed, please use **no arp detection limit-rate** command.

Syntax

```
arp detection limit-rate value
no arp detection limit-rate
```

Parameter

value —The value to specify the maximum amount of the received ARP packets per second, ranging from 10 to 100 in pps(packet/second). By default, the value is 15.

Command Mode

Interface Configuration Mode (interface ethernet / interface range ethernet)

Example

Configure the maximum amount of the received ARP packets per second as

50 pps for the port 5:

```
LP-SGW2404FP(config)# interface ethernet 5
LP-SGW2404FP(config-if)# arp detection limit-rate 50
```

arp detection recover

Description

The **arp detection recover** command is used to restore to the port to the ARP transmit status from the ARP filter status.

Syntax

```
arp detection recover
```

Command Mode

Interface Configuration Mode (interface ethernet / interface range ethernet)

Example

Restore the port 5 to the ARP transmit status:

```
LP-SGW2404FP(config)# interface ethernet 5
LP-SGW2404FP(config-if)# arp detection recover
```

show arp detection global

Description

The **show arp detection global** command is used to display the ARP detection global configuration including the enable/disable status and the Trusted Port list.

Syntax

```
show arp detection global
```

Command Mode

Any Configuration Mode

Example

Display the ARP detection configuration globally:

```
LP-SGW2404FP(config)# show arp detection global
```

show arp detection interface

Description

The **show arp detection interface** command is used to display the interface configuration of ARP detection.

Syntax

show arp detection interface [ethernet *port-num*]

Parameter

port-num —The number of switch port. By default, display the configuration of all the ports.

Command Mode

Any Configuration Mode

Example

Display the configuration of all the ports:

```
LP-SGW2404FP(config)# show arp detection interface
```

show arp detection statistic

Description

The **show arp detection statistic** command is used to display the number of the illegal ARP packets received.

Syntax

show arp detection statistic

Command Mode

Any Configuration Mode

Example

Display the number of the illegal ARP packets received:

```
LP-SGW2404FP(config)# show arp detection statistic
```

show arp detection statistic reset

Description

The **show arp detection statistic reset** command is used to clear the statistic for the illegal ARP packets received.

Syntax

show arp detection statistic reset

Command Mode

Global Configuration Mode

Example

Clear the statistic of the illegal ARP packets received:

```
LP-SGW2404FP(config)# show arp detection statistic reset
```

Chapter 13 DoS Defend Command

DoS (Denial of Service) Attack is to occupy the network bandwidth maliciously by the network attackers or the evil programs sending a lot of service requests to the Host. With the DoS Defend enabled, the switch can analyze the specific field of the received packets and provide the defend measures to ensure the normal working of the local network.

dos-prevent

Description

The **dos-prevent** command is used to enable the DoS defend function globally. To disable the DoS defend function, please use **no dos-prevent** command.

Syntax

```
dos-prevent
no dos-prevent
```

Command Mode

Global Configuration Mode

Example

Enable the DoS defend function globally:

```
LP-SGW2404FP(config)# dos-prevent
```

dos-prevent type

Description

The **dos-prevent type** command is used to select the DoS Defend Type. To disable the corresponding Defend Type, please use **no dos-prevent type** command.

Syntax

```
dos-prevent type [land] [scan-synfin] [xma-scan] [null-scan] [port-less-1024]
[blat] [ping-flood] [syn-flood]
no dos-prevent type [land] [scan-synfin] [xma-scan] [null-scan] [port-less-
1024] [blat] [ping-flood] [syn-flood]
```

Parameter

land — Land attack.
scan-synfin — Scan SYNFIN attack.
xma-scan — Xma Scan attack.
null-scan — NULL Scan attack.
port-less-than-1024 — The SYN packets whose Source Port less than 1024.
blat — Blat attack.

ping-flood — Ping flooding attack, If Ping-flood attack is enabled, the switch will automatically limit the transmission rate of ping packets to 512K upon being attacked.

syn-flood — SYN/SYN-ACK flooding attack. If SYN/SYN-ACK flooding attack is enabled, the switch will automatically limit the transmission rate of SYN/SYN-ACK packets to 512K upon being attacked..

Command Mode

Global Configuration Mode

Example

Enable three DoS Defend Types named Land attack, Xma Scan attack and Ping flooding attack:

```
LP-SGW2404FP(config)# dos-prevent type land xma-scan ping-flood
```

show dos-prevent

Description

The **show dos-prevent** command is used to display the DoS information of the detected DoS attack, including enable/disable status, the DoS Defend Type, etc.

Syntax

```
show dos-prevent
```

Command Mode

Any Configuration Mode

Example

Display the DoS information of the detected DoS attack globally:

```
LP-SGW2404FP(config)# show dos-prevent
```


Chapter 14 IEEE 802.1X Commands

IEEE 802.1X function is to provide an access control for LAN ports via the authentication. Only the supplicant passing the authentication can access the LAN.

dot1x

Description

The **dot1x** command is used to enable the IEEE 802.1X function globally. To disable the IEEE 802.1X function, please use **no dot1x** command.

Syntax

```
dot1x
no dot1x
```

Command Mode

Global Configuration Mode

Example

Enable the IEEE 802.1X function:

```
LP-SGW2404FP(config)# dot1x
```

dot1x auth-method

Description

The **dot1x auth-method** command is used to configure the Authentication Method of IEEE 802.1X. To restore to the default 802.1x authentication method, please use **no dot1x auth-method** command.

Syntax

```
dot1x auth-method { pap | eap-md5 }
no dot1x auth-method
```

Parameter

pap | eap-md5 —Authentication Methods.

PAP: IEEE 802.1X authentication system uses extensible authentication protocol (EAP) to exchange information between the switch and the client. The transmission of EAP packets is terminated at the switch and the EAP packets are converted to the other protocol (such as RADIUS) packets for transmission.

EAP-MD5: IEEE 802.1X authentication system uses extensible authentication protocol (EAP) to exchange information between the switch and the client. The EAP protocol packets with authentication data can be encapsulated in the advanced protocol (such as RADIUS) packets to be transmitted to the authentication server.

Command Mode

Global Configuration Mode

Example

Configure the Authentication Method of IEEE 802.1X as pap:

```
LP-SGW2404FP(config)# dot1x auth-method pap
```

dot1x guest-vlan

Description

The **dot1x guest-vlan** command is used to enable the Guest VLAN function globally. To disable the Guest VLAN function, please use **no dot1x guest-vlan** command.

Syntax

```
dot1x guest-vlan vid  
no dot1x guest-vlan
```

Parameter

vid —The VLAN ID needed to enable the Guest VLAN function, ranging from 2 to 4094. The supplicants in the Guest VLAN can access the specified network source.

Command Mode

Global Configuration Mode

Example

Enable the Guest VLAN function for VLAN 5:

```
LP-SGW2404FP(config)# dot1x guest-vlan 5
```

dot1x quiet-period

Description

The **dot1x quiet-period** command is used to enable the quiet-period function. To disable the function, please use **no dot1x quiet-period** command.

Syntax

```
dot1x quiet-period  
no dot1x quiet-period
```

Command Mode

Global Configuration Mode

Example

Enable the quiet-period function:

```
LP-SGW2404FP(config)# dot1x quiet-period
```

dot1x timer

Description

The **dot1x timer** command is used to configure the Quiet Period and the Supplicant Timeout. To restore to the default, please use **no dot1x timer** command.

Syntax

```
dot1x timer quiet-period period supp-timeout timeout  
no dot1x timer
```

Parameter

period —The value for Quiet Period, ranging from 1 to 999 in seconds. By default, it is 10. Once the supplicant failed to the 802.1X Authentication, then the switch will not respond to the authentication request from the same supplicant during the Quiet Period.

timeout —The maximum time for the switch to wait for the response from supplicant before resending a request to the supplicant., ranging from 1 to 9 in second. By default, it is 3.

Command Mode

Global Configuration Mode

Example

Configure the Quiet Period and the Supplicant Timeout as 12 seconds and 6 seconds:

```
LP-SGW2404FP(config)# dot1x timer quiet-period 12 supp-timeout 6
```

dot1x retry

Description

The **dot1x retry** command is used to configure the maximum transfer times of the repeated authentication request. To restore to the default value, please use **no dot1x retry** command.

Syntax

```
dot1x retry retry-time  
no dot1x retry
```

Parameter

retry-time —The maximum transfer times of the repeated authentication request, ranging from 1 to 9 in times. By default, the value is 3.

Command Mode

Global Configuration Mode

Example

Configure the maximum transfer times of the repeated authentication request as 5:

```
LP-SGW2404FP(config)# dot1x retry 5
```

dot1x(interface)

Description

The **dot1x** command is used to enable the IEEE 802.1X function for a specified port. To disable the IEEE 802.1X function for a specified port, please use **no dot1x** command.

Syntax

```
dot1x  
no dot1x
```

Command Mode

Interface Configuration Mode (interface ethernet / interface range ethernet)

Example

Enable the IEEE 802.1X function for the port 1:

```
LP-SGW2404FP(config)# interface ethernet 1  
LP-SGW2404FP(config-if)# dot1x
```

dot1x guest-vlan

Description

The **dot1x guest-vlan** command is used to enable the Guest VLAN function for a specified port. To disable the Guest VLAN function for a specified port, please use **no dot1x guest-vlan** command. Please ensure that the Control Type of the corresponding port is port-based before enabling the Guest VLAN function for it. Please refer to [dot1x port-method](#) for details.

Syntax

```
dot1x guest-vlan  
no dot1x guest-vlan
```

Command Mode

Interface Configuration Mode (interface ethernet / interface range ethernet)

Example

Enable the Guest VLAN function for port 2:

```
LP-SGW2404FP(config)# interface ethernet 2  
LP-SGW2404FP(config-if)# dot1x guest-vlan
```

dot1x port-control

Description

The **dot1x port-control** command is used to configure the Control Mode of IEEE 802.1X for the specified port. To restore to the default configuration, please use **no dot1x port-control** command.

Syntax

```
dot1x port-control { auto | authorized-force | unauthorized-force }
no dot1x port-control
```

Parameter

auto | authorized-force | unauthorized-force — The Control Mode for the port.

Auto: In this mode, the port will normally work only after passing the 802.1X Authentication.

Authorized-force: In this mode, the port can work normally without passing the 802.1X Authentication.

Unauthorized-force: In this mode, the port is forbidden working for its fixed unauthorized status.

By default, the Control Mode is auto.

Command Mode

Interface Configuration Mode (interface ethernet / interface range ethernet)

Example

Configure the Control Mode for port 1 as authorized-force:

```
LP-SGW2404FP(config)# interface ethernet 1
LP-SGW2404FP(config-if)# dot1x port-control authorized-force
```

dot1x port-method

Description

The **dot1x port-method** command is used to configure the Control Type of IEEE 802.1X for the specified port. To restore to the default configuration, please use **no dot1x port-method** command.

Syntax

```
dot1x port-method { mac-based | port-based }
no dot1x port-method
```

Parameter

mac-based | port-based — The Control Type for the port.

Mac-based: Any client connected to the port should pass the 802.1X Authentication for access.

Port-based: All the clients connected to the port can access the network on the condition that any one of the clients has passed the 802.1X Authentication.

By default, the Control Type is mas-based.

Command Mode

Interface Configuration Mode (interface ethernet / interface range ethernet)

Example

Configure the Control Type for port 5 as port-based:

```
LP-SGW2404FP(config)# interface ethernet 5
LP-SGW2404FP(config-if)# dot1x port-method port-based
```

radius authentication primary-ip

Description

The **radius authentication primary-ip** command is used to configure the IP address of the authentication server. Authentication server provides the authentication service for the switch via the stored client information, such as the user name, password, etc, with the purpose to control the authentication and accounting status of the clients. The RADIUS (Remote Authentication Dial-In User Service) server is used as the Authentication server generally.

Syntax

radius authentication primary-ip *ip-addr*

Parameter

ip-addr — The IP address of the authentication server.

Command Mode

Global Configuration Mode

Example

Configure the IP of the authentication server as 10.20.1.100:

```
LP-SGW2404FP(config)# radius authentication primary-ip 10.20.1.100
```

radius authentication secondary-ip

Description

The **radius authentication secondary-ip** command is used to configure the IP address of the alternate authentication server. To restore to the default configuration, please use **no radius authentication secondary-ip** command.

Syntax

radius authentication secondary-ip *ip-addr*

no radius authentication secondary-ip**Parameter**

ip-addr —The IP address of the alternate authentication server. By default, it is 0.0.0.0.

Command Mode

Global Configuration Mode

Example

Configure the IP address of the alternate authentication server as 10.20.1.101:

```
LP-SGW2404FP(config)# radius authentication secondary-ip 10.20.1.101
```

radius authentication port

Description

The **radius authentication port** command is used to configure the authentication port of the alternate authentication server. To restore to the default value, please use **no radius authentication port** command.

Syntax

radius authentication port *port-num*

no radius authentication port

Parameter

port-num —The UDP port of authentication server(s) ranging from 1 to 65535 and the default port is 1812.

Command Mode

Global Configuration Mode

Example

Configure the authentication port of the alternate authentication server as 1815:

```
LP-SGW2404FP(config)# radius authentication port 1815
```

radius authentication key

Description

The **radius authentication key** command is used to configure the shared password for the switch and the authentication servers to exchange messages. To clear the radius authentication key, please use **no radius authentication key** command.

Syntax

radius authentication key *key-string*

no radius authentication key**Parameter**

key-string—The shared password for the switch and the authentication servers to exchange messages which contains 15 characters at most..

Command Mode

Global Configuration Mode

Example

Configure the shared password for the switch and the authentication servers as lanpro:

```
LP-SGW2404FP(config)# radius authentication key lanpro
```

radius accounting enable

Description

The **radius accounting enable** command is used to enable the accounting feature. To disable the accounting feature, please use **no radius accounting enable** command.

Syntax

radius accounting enable
no radius accounting enable

Command Mode

Global Configuration Mode

Example

Enable the accounting feature:

```
LP-SGW2404FP(config)# radius accounting enable
```

radius accounting primary-ip

Description

The **radius accounting primary-ip** command is used to configure the IP address of the accounting server.

Syntax

radius accounting primary-ip *ip-addr*

Parameter

ip-addr — The IP address of the accounting server.

Command Mode

Global Configuration Mode

Example

Configure the IP address of the accounting server as 10.20.1.100:

```
LP-SGW2404FP(config)# radius accounting primary-ip 10.20.1.100
```

radius accounting secondary-ip

Description

The **radius accounting secondary-ip** command is used to configure the IP address of the alternate accounting server. To restore to the default configuration, please use **no radius accounting secondary-ip** command.

Syntax

```
radius accounting secondary-ip ip-addr  
no radius accounting secondary-ip
```

Parameter

ip-addr — The IP address of the alternate accounting server. By default, it is 0.0.0.0.

Command Mode

Global Configuration Mode

Example

Configure the IP address of the alternate accounting server as 10.20.1.101:

```
LP-SGW2404FP(config)# radius accounting secondary-ip 10.20.1.101
```

radius accounting port

Description

The **radius accounting port** command is used to set the UDP port of accounting server(s). To restore to the default value, please use **no radius accounting port**.

Syntax

```
radius accounting port port-num  
no radius accounting port
```

Parameter

port-num — The UDP port of accounting server(s) ranging from 1 to 65535. The default port is 1813.

Command Mode

Global Configuration Mode

Example

Set the UDP port of accounting server(s) as 1816:

```
LP-SGW2404FP(config)# radius accounting port 1816
```

radius accounting key

Description

The **radius accounting key** command is used to configure the shared password for the switch and the accounting servers to exchange messages. To clear the shared password for the switch and the accounting servers, please use **no radius accounting key** command.

Syntax

radius accounting key *key-string*
no radius accounting key

Parameter

key-string — The shared password for the switch and the accounting servers to exchange messages which contains 15 characters at most.

Command Mode

Global Configuration Mode

Example

Configure the shared password for the switch and the accounting servers as lanpro:

```
LP-SGW2404FP(config)# radius accounting key lanpro
```

radius response-timeout

Description

The **radius response-timeout** command is used to configure the maximum time for the switch to wait for the response from the RADIUS authentication and the accounting server. To restore to the default value, please use **no radius response-timeout** command.

Syntax

radius response-timeout *time*
no radius response-timeout

Parameter

time — The maximum time for the switch to wait for the response before resending a request to the supplicant., ranging from 1 to 9 seconds. By default, it is 3.

Command Mode

Global Configuration Mode

Example

Configure the maximum time for the switch to wait for the response from the RADIUS authentication and the accounting server as 5 seconds:

```
LP-SGW2404FP(config)# radius response-timeout 5
```

show dot1x global

Description

The **show dot1x global** command is used to display the global configuration of 801.X.

Syntax

```
show dot1x global
```

Command Mode

Any configuration Mode

Example

Display the configuration of 801.X globally:

```
LP-SGW2404FP(config)# show dot1x global
```

show dot1x interface

Description

The **show dot1x interface** command is used to display the port configuration of 801.X.

Syntax

```
show dot1x interface [ ethernet port-num ]
```

Parameter

port-num — The number of the Ethernet port. Display the configuration of all the ports, by default.

Command Mode

Any configuration Mode

Example

Display the port configuration of 801.X:

```
LP-SGW2404FP(config)# show dot1x interface
```

show radius authentication

Description

The **show radius authentication** command is used to display the configuration of the RADIUS authentication server.

Syntax

```
show radius authentication
```

Command Mode

Any configuration Mode

Example

Display the configuration of the RADIUS authentication server:

```
LP-SGW2404FP(config)# show radius authentication
```

show radius accounting

Description

The **show radius accounting** command is used to display the configuration of the accounting server.

Syntax

```
show radius accounting
```

Command Mode

Any configuration Mode

Example

Display the configuration of the accounting server:

```
LP-SGW2404FP(config)# show radius accounting
```

Chapter 15 Log Commands

The log information will record the settings and operation of the switch respectively for you to monitor operation status and diagnose malfunction.

logging local buffer

Description

The **logging local buffer** command is used to configure the severity level and the status of the configuration input to the log buffer. To restore to the default configuration, please use **no logging local buffer** command. Local Log is the log information saved in the switch. It has two output channels, that is, it can be saved to two different positions, log buffer and log file. Indicates the RAM for saving system log and the information in the log buffer can be got by [show logging buffer level](#) command. It will be lost when the switch is restarted.

Syntax

```
logging local buffer {level} [ disable | enable ]
no logging local buffer
```

Parameter

level — Severity level of the log information output to each channel. There are 8 severity levels marked with values 0-7. The smaller value has the higher priority. Only the log with the same or smaller severity level value will be output. By default, it is 7 indicating that all the log information will be saved in the log buffer.

disable | enable — Disable or enable the log buffer. By default, it is enabled.

Command Mode

Global Configuration Mode

Example

Enable the log buffer function and set the severity as 6:

```
LP-SGW2404FP(config)# logging local buffer 6 enable
```

logging local flash

Description

The **logging local flash** command is used to configure the level and the status of the log file input. To restore to the default configuration, please use **no logging local flash** command. The log file indicates the flash sector for saving system log. The information in the log file will not be lost after the switch is restarted and can be got by the [show logging flash level](#) command.

Syntax

```
logging local flash {level} [ disable | enable ]
```

no logging local flash

Parameter

level —Severity level of the log information output to each channel. There are 8 severity levels marked with values 0-7. The smaller value has the higher priority. Only the log with the same or smaller severity level value will be output. By default, it is 4 indicating that the log information marked with 0~4 will be saved in the log buffer.

disable | enable —Disable or enable the log file. By default, it is enabled.

Command Mode

Global Configuration Mode

Example

Enable the log file function and set the severity as 7:

```
LP-SGW2404FP(config)# logging local flash 7
```

logging clear

Description

The **logging clear** command is used to clear the information in the log buffer and log file.

Syntax

```
logging clear [ buffer | flash ]
```

Parameter

buffer | flash —The output channels: buffer and flash. Clear the information of the two channels, by default.

Command Mode

Global Configuration Mode

Example

Clear the information in the log file:

```
LP-SGW2404FP(config)# logging clear buffer
```

logging loghost

Description

The **logging loghost** command is used to configure the Log Host. To clear the configuration of the specified Log Host, please use **no logging loghost** command. Log Host is to receive the system log from other devices. You can remotely monitor the settings and operation status of other devices through the log host.

Syntax

logging loghost index *{idx}* *{host-ip}* *{level}* { disable | enable }
no logging loghost index *{idx}*

Parameter

idx — The index of the log host. The switch supports 4 log hosts.

host-ip — The IP for the log host.

level — The severity level of the log information sent to each log host. There are 8 severity levels marked with values 0-7. The smaller value has the higher priority. Only the log with the same or smaller severity level value will be sent to the corresponding log host. By default, it is 6 indicating that the log information marked with 0~6 will be sent to the log host.

disable | enable — Disable or enable the log host. By default, it is disabled.

Command Mode

Global Configuration Mode

Example

Enable the log host 2 and set the IP address 192.168.0.148, the level 5:

```
LP-SGW2404FP(config)# logging loghost index 2 192.168.0.148 5 enable
```

show logging local-config

Description

The **show logging local-config** command is used to display the configuration of the Local Log including the log buffer and the log file.

Syntax

```
show logging local-config
```

Command Mode

Any configuration Mode

Example

Display the configuration of the Local Log:

```
LP-SGW2404FP(config)# show logging local-config
```

show logging loghost

Description

The **show logging loghost** command is used to display the configuration of the log host.

Syntax

```
show logging loghost [index]
```

Parameter

index — The index of the log host whose configuration will be displayed.

Display the configuration of all the log hosts by default.

Command Mode

Any Configuration Mode

Example

Display the configuration of the log host 2:

```
LP-SGW2404FP(config)# show logging loghost 2
```

show logging buffer level

Description

The **show logging buffer level** command is used to display the log information in the log buffer according to the severity level.

Syntax

```
show logging buffer level [level]
```

Parameter

level — Severity level. There are 8 severity levels marked with values 0-7. The information will be displayed only when the log with the same or smaller severity level value. Display all the log information in the log buffer by default.

Command Mode

Any Configuration Mode

Example

Display the log information from level 0 to level 5 in the log buffer:

```
LP-SGW2404FP(config)# show logging buffer level 5
```

show logging flash level

Description

The **show logging flash level** command is used to display the log information in the log file according to the severity level.

Syntax

```
show logging flash level [level]
```

Parameter

level — Severity level. There are 8 severity levels marked with values 0-7. The information will be displayed only when the log with the same or smaller severity level value. Display all the log information in the log file by default.

Command Mode

Any Configuration Mode

Example

Display the log information with the level marked 0~3 in the log file:

```
LP-SGW2404FP(config)# show logging flash level 3
```

Chapter 16 SSH Commands

SSH (Security Shell) can provide the unsecured remote management with security and powerful authentication to ensure the security of the management information.

ssh server enable

Description

The **ssh server enable** command is used to enable SSH function. To disable the SSH function, please use **no ssh server enable** command.

Syntax

```
ssh server enable
no ssh server enable
```

Command Mode

Global Configuration Mode

Example

Enable the SSH function:

```
LP-SGW2404FP(config)# ssh server enable
```

ssh version

Description

The **ssh version** command is used to enable the SSH protocol version. To disable the protocol version, please use **no ssh version** command.

Syntax

```
ssh version { v1 | v2 }
no ssh version { v1 | v2 }
```

Parameter

v1 | v2 — The SSH protocol version to be enabled. They represent SSH v1 and SSH v2 respectively.

Command Mode

Global Configuration Mode

Example

Enable SSH v2:

```
LP-SGW2404FP(config)# ssh version v2
```

ssh idle-timeout

Description

The **ssh idle-timeout** command is used to specify the idle-timeout time of SSH. To restore to the factory defaults, please use **no ssh idle-timeout** command.

Syntax

ssh idle-timeout *value*
no ssh idle-timeout

Parameter

value — The idle-timeout time. During this period, the system will automatically release the connection if there is no operation from the client. It ranges from 1 to 999 in seconds. By default, this value is 500.

Command Mode

Global Configuration Mode

Example

Specify the idle-timeout time of SSH as 300 seconds:

```
LP-SGW2404FP(config)# ssh idle-timeout 300
```

ssh max-client

Description

The **ssh max-client** command is used to specify the maximum number of the connections to the SSH server. To return to the default configuration, please use **no ssh max-client** command.

Syntax

ssh max-client *number*
no ssh max-client

Parameter

number — The maximum number of the connections to the SSH server. It ranges from 1 to 5. By default, this value is 5.

Command Mode

Global Configuration Mode

Example

Specify the maximum number of the connections to the SSH server as 3:

```
LP-SGW2404FP(config)# ssh max-client 3
```

ssh download

Description

The **ssh max-client** command is used to download the SSH key file from TFTP server.

Syntax

ssh download { v1 | v2 } *key-file* **ip-address** *ip-addr*

Parameter

v1 | v2 — Select the type of SSH key to download, v1 represents SSH-1, v2 represents SSH-2.

key-file — The name of the key-file which is selected to download. The length of the name ranges from 1 to 25 characters. The key length of the downloaded file must be in the range of 256 to 3072 bits.

ip-addr — The IP address of the TFTP server.

Command Mode

Global Configuration Mode

Example

Download a SSH-1 type key file named ssh-key from TFTP server with the IP Address 192.168.0.148:

```
LP-SGW2404FP(config)# ssh download v1 ssh-key ip-address  
192.168.0.148
```

show ssh

Description

The **show ssh** command is used to display the global configuration of SSH.

Syntax

```
show ssh
```

Command Mode

Any Configuration Mode

Example

Display the global configuration of SSH:

```
LP-SGW2404FP(config)# show ssh
```

Chapter 17 SSL Commands

SSL (Secure Sockets Layer) , a security protocol, is to provide a secure connection for the application layer protocol(e.g. HTTP) based on TCP. Adopting asymmetrical encryption technology, SSL uses key pair to encrypt/decrypt information. A key pair refers to a public key (contained in the certificate) and its corresponding private key. By default the switch has a certificate (self-signed certificate) and a corresponding private key. The Certificate/Key Download function enables the user to replace the default key pair.

ssl enable

Description

The **ssl enable** command is used to enable the SSL function on the switch. To disable the SSL function, please use **no ssl enable** command. Only the SSL function is enabled, a secure HTTPS connection can be established.

Syntax

```
ssl enable
no ssl enable
```

Command Mode

Global Configuration Mode

Example

Enable the SSL function:

```
LP-SGW2404FP(config)# ssl enable
```

ssl download certificate

Description

The **ssl download certificate** command is used to download a certificate to the switch from TFTP server.

Syntax

```
ssl download certificate ssl-cert ip-address ip-addr
```

Parameter

ssl-cert — The name of the SSL certificate which is selected to download to the switch. The length of the name ranges from 1 to 25 characters. The Certificate must be BASE64 encoded.

ip-addr — The IP address of the TFTP server.

Command Mode

Global Configuration Mode

Example

Download a SSL Certificate named *ssl-cert* from TFTP server with the IP Address of 192.168.0.148:

```
LP-SGW2404FP(config)# ssl download certificate ssl-cert ip-address
192.168.0.148
```

ssl download key

Description

The **ssl download key** command is used to download a SSL key to the switch from TFTP server.

Syntax

```
ssl download key ssl-key ip-address ip-addr
```

Parameter

ssl-key — The name of the SSL key which is selected to download to the switch. The length of the name ranges from 1 to 25 characters. The Key must be BASE64 encoded.

ip-addr — The IP address of the TFTP server.

Command Mode

Global Configuration Mode

Example

Download a SSL Key named *ssl-key* from TFTP server with the IP Address of 192.168.0.148:

```
LP-SGW2404FP(config)# ssl download key ssl-key ip-address
192.168.0.148
```

show ssl

Description

The **show ssl** command is used to display the global configuration of SSL.

Syntax

```
show ssl
```

Command Mode

Any Configuration Mode

Example

Display the global configuration of SSL:

```
LP-SGW2404FP(config)# show ssl
```

Chapter 18 Address Commands

Address configuration can improve the network security by configuring the Port Security and maintaining the address information by managing the Address Table.

bridge address port-security

Description

The **bridge address port-security** command is used to configure port security. To return to the default configuration, please use **no bridge address port-security** command. Port Security is to protect the switch from the malicious MAC address attack by limiting the maximum number of the MAC addresses that can be learned on the port. The port with Port Security feature enabled will learn the MAC address dynamically. When the learned MAC address number reaches the maximum, the port will stop learning. Therefore, the other devices with the MAC address unlearned cannot access to the network via this port.

Syntax

bridge address port-security [**max-number** {*num*}] [**mode** {dynamic | static | permanent}] [**status** {disable | enable}]

no bridge address port-security

Parameter

num — The maximum number of MAC addresses that can be learned on the port. It ranges from 0 to 64. By default this value is 64.

mode — Learn mode for MAC addresses. There are three modes, including Dynamic mode, Static mode and Permanent mode. When Dynamic mode is selected, the learned MAC address will be deleted automatically after the aging time. When Static mode is selected, the learned MAC address will be out of the influence of the aging time and can only be deleted manually. The learned entries will be cleared after the switch is rebooted. When permanent mode is selected, the learned MAC address will be out of the influence of the aging time and can only be deleted manually too. However, the learned entries will be saved even the switch is rebooted.

status — Enable or disable the Port Security function for a specified port. By default, this function is disabled.

Command Mode

Interface Configuration Mode (interface ethernet / interface range ethernet)

Example

Enable Port Security function for port1, select Static mode as the learn mode, and specify the maximum number of MAC addresses that can be learned on this port as 30:

```
LP-SGW2404FP(config)# interface ethernet 1
```

```
LP-SGW2404FP(config-if)# bridge address port-security max-number 30
mode static status enable
```

bridge address static

Description

The **bridge address static** command is used to add the static MAC address entry. To remove the corresponding entry, please use **no bridge address static** command. The static address can be added or removed manually, independent of the aging time. In the stable networks, the static MAC address entries can facilitate the switch to reduce broadcast packets and enhance the efficiency of packets forwarding remarkably.

Syntax

```
bridge address static {mac mac} {vid vid} {port port}
no bridge address static [mac] [vid] [port]
```

Parameter

mac — The MAC address of the entry you desire to add.

vid — The VLAN ID number of your desired entry. It ranges from 1 to 4094.

port — The Port number of your desired entry.

Command Mode

Global Configuration Mode

Example

Add a static Mac address entry to bind the MAC address 00:27:11:4f:6c:23, VLAN1 and Port1 together:

```
LP-SGW2404FP(config)# bridge address static mac 00:27:11:4f:6c:23 vid
1 port 1
```

bridge aging-time

Description

The **bridge aging-time** command is used to configure aging time for the dynamic address. To return to the default configuration, please use **no bridge aging-time** command.

Syntax

```
bridge aging-time aging-time
no bridge aging-time
```

Parameter

aging-time — The aging time for the dynamic address. The value of it can be 0 or ranges from 10 to 630 seconds. When 0 is entered, the Auto Aging function is disabled. By default, this value is 300.

Command Mode

Global Configuration Mode

Example

Configure the aging time as 500 seconds:

```
LP-SGW2404FP(config)# bridge aging-time 500
```

bridge address filtering

Description

The **bridge address filtering** command is used to add the filtering address entry. To delete the corresponding entry, please use **no bridge address filtering** command. The filtering address function is to forbid the undesired package to be forwarded. The filtering address can be added or removed manually, independent of the aging time.

Syntax

```
bridge address filtering {mac} {vid}  
no bridge address filtering [mac] [vid]
```

Parameter

mac — The MAC address to be filtered.

vid — The corresponding VLAN ID of the MAC address. It ranges from 1 to 4094.

Command Mode

Global Configuration Mode

Example

Add a filtering address entry whose VLAN ID is 1 and MAC address is 00:27:11:04:01:5d:

```
LP-SGW2404FP(config)# bridge address filtering 00:27:11:04:01:5d 1
```

show bridge port-security

Description

The **show bridge port-security** command is used to configure the Port Security for each port, such as configure the Max number of MAC addressed that can be learned on the port and the Learn Mode.

Syntax

```
show bridge port-security [port-num]
```

Parameter

port-num — The port number of the switch. By default, the Port Security configuration of all ports is displayed.

Command Mode

Any Configuration Mode

Example

Display the Port Security configuration of port2:

```
LP-SGW2404FP(config)# show bridge port-security 2
```

show bridge address

Description

The **show bridge address** command is used to display the information of all Address entries.

Syntax

```
show bridge address { dynamic | static | filtering | all }
```

Parameter

dynamic | static | filtering | all — the type of your desired entry

Command Mode

Any Configuration Mode

Example

Display the information of all Address entries:

```
LP-SGW2404FP(config)# show bridge address all
```

show bridge aging-time

Description

The **show bridge aging-time** command is used to display the Aging Time of the MAC address.

Syntax

```
show bridge aging-time
```

Command Mode

Any Configuration Mode

Example

Display the Aging Time of the MAC address:

```
LP-SGW2404FP(config)# show bridge aging-time
```

Chapter 19 System Commands

System Commands can be used to configure the System information and System IP, reboot and reset the switch, upgrade the switch system and other operations.

system-descript

Description

The **system-descript** command is used to configure the Device Name, Device Location and System Contact. To clear all the information, please use **no system-descript** command.

Syntax

system-descript {**sysname** {*sysname*} | **location** {*location*} | **contact-info** {*contact_info*} }

no system-descript {*sysname* | *location* | *contact_info*}

Parameter

sysname — System Name(Device Name). The length of the name ranges from 1 to 32 characters. By default, it is empty.

location — Device Location. It consists of 32 characters at most. By default, it is empty.

contact_info — Contact Information. It consists of 32 characters at most. By default, it is empty.

Command Mode

Global Configuration Mode

Example

Configure the System Contact as www.lanpro.com:

```
LP-SGW2404FP(config)# system-descript contact-info www.lanpro.com
```

system-time gmt

Description

The **system-time gmt** command is used to configure the time zone and the IP Address for the NTP Server. To clear all the information, please use **no system-time gmt** command.

Syntax

system-time gmt {*time-zone*} {*ntp-server*} {*backup-ntp-server*}

no system-time gmt {*time-zone*} {*ntp-server*} {*backup-ntp-server*}

Parameter

time-zone — Your local time-zone, and it ranges from -12 to 13.

ntp-server — The IP Address for the Primary NTP Server.

backup-ntp-server — The IP Address for the Secondary NTP Server.

Command Mode

Global Configuration Mode

Example

Configure the system time mode as `gmt`, the time zone is `-12`, the primary ntp server is `133.100.9.2` and the secondary ntp server is `139.78.100.163`:

```
LP-SGW2404FP(config)# system-time gmt -12 133.100.9.2 139.78.100.163
```

system-time manual

Description

The **system-time manual** command is used to configure the system time manually. To clear all the information, please use **no system-time manual** command.

Syntax

```
system-time manual {time }
no system-time manual {time }
```

Parameter

time — Set the date and time manually, MM/DD/YYYY-HH:MM:SS

Command Mode

Global Configuration Mode

Example

Configure the system mode as `manual`, and the time is `12/20/2010 17:30:35`

```
LP-SGW2404FP(config)# system-time manual 12/20/2010-17:30:35
```

system-time dst

Description

The **system-time dst** command is used to configure the DST (Daylight Saving Time). To clear all the information, please use **no system-time dst** command.

Syntax

```
system-time dst {start-date} {start-time} {end-date} {end-time}
no system-time dst
```

Parameter

start-date — The start date of DST you set.

start-time — The start time of DST you set.

end-date — The end date of DST you set.

end-time — The end time of DST you set.

Command Mode

Global Configuration Mode

Example

Configure the dst, dst is from April 1 00:00 to November 1 23:00.

```
LP-SGW2404FP(config)# system-time dst 04/01 0 11/01 23
```

ip address

Description

The **ip address** command is used to configure the IP Address, Subnet Mask and Default Gateway. To restore to the factory defaults, please use **no ip address** command.

Syntax

```
ip address {ip-addr} {ip-mask} [gateway]
```

```
no ip address
```

Parameter

ip-addr — The system IP of the Switch. The default system IP is 192.168.0.1.

ip-mask — The Subnet Mask of the Switch. The default Subnet Mask is 255.255.255.0.

gateway — The Default Gateway of the Switch. By default, it is empty.

Command Mode

Global Configuration Mode

Example

Configure the system IP as 192.168.0.69 and the Subnet Mask as 255.255.255.0:

```
LP-SGW2404FP(config)# ip address 192.168.0.69 255.255.255.0
```

ip management-vlan

Description

The **ip management-vlan** command is used to configure the management VLAN, through which you can log on to the switch.

Syntax

```
ip management-vlan {vlan-id}
```

Parameter

vlan-id — VLAN ID, ranging from 1 to 4094.

Command Mode

Global Configuration Mode

Example

Set the VLAN6 as management VLAN:

```
LP-SGW2404FP(config)# ip management-vlan 6
```

ip dhcp-alloc

Description

The **ip dhcp-alloc** command is used to enable the DHCP Client function. When this function is enabled, the switch will obtain IP from DHCP Client server.

Syntax

```
ip dhcp-alloc
```

Command Mode

Global Configuration Mode

Example

Enable the DHCP Client function:

```
LP-SGW2404FP(config)# ip dhcp-alloc
```

ip bootp-alloc

Description

The **ip bootp-alloc** command is used to obtain IP address from BOOTP Server.

Syntax

```
ip bootp-alloc
```

Command Mode

Global Configuration Mode

Example

Enable the BOOTP Protocol to obtain IP address from BOOTP Server:

```
LP-SGW2404FP(config)# ip bootp-alloc
```

reset

Description

The **reset** command is used to reset the switch's software. After resetting, all configuration of the switch (except the IP Address) will restore to the factory defaults and your current settings will be lost.

Syntax

```
reset
```

Command Mode

Privileged EXEC Mode

Example

Reset the software of the Switch:

```
LP-SGW2404FP# reset
```

reboot

Description

The **reboot** command is used to reboot the Switch. To avoid damage, **please don't turn off the device while rebooting.**

Syntax

```
reboot
```

Command Mode

Privileged EXEC Mode

Example

Reboot the Switch:

```
LP-SGW2404FP# reboot
```

user-config backup

Description

The **user-config backup** command is used to backup the configuration file by TFTP server.

Syntax

```
user-config backup filename name ip-address ip-addr
```

Parameter

name — Specify the name for the configuration file which would be backup.

ip-addr — IP Address of the TFTP server.

Command Mode

Privileged EXEC Mode

Example

Backup the configuration files by TFTP server with the IP 192.168.0.148 and name this file config.cfg:

```
LP-SGW2404FP# user-config backup filename config.cfg ip-address
192.168.0.148
```

user-config load

Description

The **user-config load** command is used to download the configuration file to the switch by TFTP server.

Syntax

user-config load filename *name* **ip-address** *ip-addr*

Parameter

name — Specify the name of the configuration file which would be downloaded.

ip-addr — IP Address of the TFTP server.

Command Mode

Privileged EXEC Mode

Example

Download the configuration file to the switch by TFTP server with the IP 192.168.0.148 and name this file config.cfg:

```
LP-SGW2404FP# user-config load filename config.cfg ip-address
192.168.0.148
```

user-config save

Description

The **user-config save** command is used to save current settings.

Syntax

user-config save

Command Mode

Privileged EXEC Mode

Example

Save current settings:

```
LP-SGW2404FP# user-config save
```

firmware upgrade

Description

The **firmware upgrade** command is used to upgrade the switch system via the TFTP server.

Syntax

firmware upgrade filename *name* **ip-address** *ip-addr*

Parameter

name — Specify the name for the Firmware File.

ip-addr — IP Address of the TFTP server.

Command Mode

Privileged EXEC Mode

Example

Upgrade the switch system via the TFTP server with the IP 192.168.0.148:

```
LP-SGW2404FP# firmware upgrade filename firmware.bin ip-address
192.168.0.148
```

ping

Description

The **ping** command is used to test the connectivity between the switch and one node of the network.

Syntax

```
ping {ip_addr} [-n {count}] [-l {count}] [-i {count}]
```

Parameter

ip_addr — The IP address of the destination node for ping test.

count (-n) — The amount of times to send test data during Ping testing. It ranges from 1 to 10. By default, this value is 4.

count (-l) — The size of the sending data during ping testing. It ranges from 1 to 1024 bytes. By default, this value is 64.

count (-i) — The interval to send ICMP request packets. It ranges from 100 to 1000 milliseconds. By default, this value is 1000.

Command Mode

User EXEC Mode and Privileged EXEC Mode

Example

To test the connectivity between the switch and the network device with the IP 192.168.0.131, please specify the *count (-l)* as 512 bytes and *count (-i)* as 1000 milliseconds. If there is not any response after 8 times' Ping test, the connection between the switch and the network device is failed to establish:

```
LP-SGW2404FP# ping 192.168.0.131 -n 8 -l 512
```

tracert

Description

The **tracert** command is used to test the connectivity of the gateways during its journey from the source to destination of the test data.

Syntax

```
tracert {url} [maxHops]
```

Parameter

url — The IP address of the destination device.

maxHops — The maximum number of the route hops the test data can

pass though. It ranges from 1 to 30. By default, this value is 4.

Command Mode

User EXEC Mode and Privileged EXEC Mode

Example

Test the connectivity between the switch and the network device with the IP 192.168.0.131. If the destination device has not been found after 20 *maxHops*, the connection between the switch and the destination device is failed to establish:

```
LP-SGW2404FP# tracert 192.168.0.131 20
```

loopback

Description

The **loopback** command is used to test whether the port is available or not.

Syntax

```
loopback {port} { internal | external }
```

Parameter

port — The number of the port which is selected for loopback test.

internal | external — Loopback Type. There are two options, Internal and External.

Command Mode

User EXEC Mode and Privileged EXEC Mode

Example

Do a Internal-type loopback test for port 4:

```
LP-SGW2404FP#loopback 4 internal
```

show system-info

Description

The **show system-info** command is used to display System Description, Device Name, Device Location, System Contact, Hardware Version, Firmware Version, System Time, Run Time and so on.

Syntax

```
show system-info
```

Command Mode

Any Configuration Mode

Example

Display the system information:

```
LP-SGW2404FP# show system-info
```

show ip address

Description

The **show ip address** command is used to display MAC Address, IP Address, Subnet Mask and Default Gateway of the system, whether the DHCP Client function is enabled or not and some other information.

Syntax

show ip address

Command Mode

Any Configuration Mode

Example

Display the IP Address of the system

```
LP-SGW2404FP# show ip address
```

show system-time

Description

The **show system-time** command is used to display the time information of the switch.

Syntax

show system-time

Command Mode

Any Configuration Mode

Example

Display the time information of the switch

```
LP-SGW2404FP# show system-time
```

show system-time dst

Description

The **show system-time dst** command is used to display the DST time information of the switch.

Syntax

show system-time dst

Command Mode

Any Configuration Mode

Example

Display the DST time information of the switch

```
LP-SGW2404FP# show system-time dst
```

Chapter 20 Ethernet Configuration Commands

Ethernet Configuration Commands can be used to configure the Bandwidth Control, Negotiation Mode and Storm Control for Ethernet ports.

interface ethernet

Description

The **interface ethernet** command is used to enter the Interface Configuration Mode and configure one Ethernet port.

Syntax

```
interface ethernet interface
```

Parameter

interface — The Ethernet port to be configured.

Command Mode

Global Configuration Mode

Example

Enter the Interface Configuration Mode and configure Ethernet port2:

```
LP-SGW2404FP(config)# interface ethernet 2
```

interface range ethernet

Description

The **interface range ethernet** command is used to enter the Interface Configuration Mode and configure multiple Ethernet ports at the same time.

Syntax

```
interface range ethernet port-list
```

Parameter

port-list — The list of the Ethernet ports to be configured. Inconsecutive ports or port-groups are separated by a comma with no space. Use a hyphen to designate a range of ports, for instance 1-10 indicates from port 1 to port 10.

Command Mode

Global Configuration Mode

User Guidelines

Command in the Interface Range Ethernet Mode is executed independently on all ports in the range. It does not affect the execution on the other ports at all if the command results in an error on one port.

Example

Enter the Interface Configuration Mode, add ports 1-3, 6-8 to the port-list and configure them:

```
LP-SGW2404FP(config)# interface range ethernet 1-3,6-8
```

description

Description

The **description** command is used to add a description to the Ethernet port. To clear the description of the corresponding port, please use **no description** command.

Syntax

```
description string  
no description
```

Parameter

string — Content of a port description, ranging from 1 to 16 characters.

Command Mode

Interface Configuration Mode (interface ethernet)

Example

Add a description Port #5 to port5:

```
LP-SGW2404FP(config)# interface ethernet 5  
LP-SGW2404FP(config-if)# description Port #5
```

shutdown

Description

The **shutdown** command is used to disable an Ethernet port. To enable this port again, please use **no shutdown** command.

Syntax

```
shutdown  
no shutdown
```

Command Mode

Interface Configuration Mode (interface ethernet / interface range ethernet)

Example

Disable Ethernet port3:

```
LP-SGW2404FP(config)# interface ethernet 3  
LP-SGW2404FP(config-if)# shutdown
```

flow-control

Description

The **flow-control** command is used to enable the flow-control function for a

port. To disable the flow-control function for this corresponding port, please use **no flow-control** command. With the flow-control function enabled, the Ingress Rate and Egress Rate can be synchronized to avoid packets drop in the network.

Syntax

flow-control
no flow-control

Command Mode

Interface Configuration Mode (interface ethernet / interface range ethernet)

Example

Enable the flow-control function for Ethernet port 5:

```
LP-SGW2404FP(config)# interface ethernet 5
LP-SGW2404FP(config-if)# flow-control
```

negotiation

Description

The **negotiation** command is used to configure the Negotiation Mode for an Ethernet port. To return to the default configuration, please use **no negotiation** command.

Syntax

negotiation { auto | 10h | 10f | 100h | 100f | 1000f }
no negotiation

Parameter

auto — Auto negotiation (default).
10h — 10M half-duplex.
10f — 10M full-duplex.
100h — 100M half-duplex.
100f — 100M full-duplex.
1000f — 1000M full-duplex.

Command Mode

Interface Configuration Mode (interface ethernet / interface range ethernet)

Example

Configure the Negotiation Mode as 100M full-duplex for Ethernet port5:

```
LP-SGW2404FP(config)# interface ethernet 5
LP-SGW2404FP(config-if)# negotiation 100f
```

storm-control

Description

The **storm-control** command is used to configure the Storm Control function. To disable the Storm Control function, please use **no storm-control** command. Storm Control function allows the switch to filter broadcast, multicast and UL frame in the network. If the transmission rate of the three kind packets exceeds the set bandwidth, the packets will be automatically discarded to avoid network broadcast storm.

Syntax

```
storm-control [bc-rate bc-rate] [mc-rate mc-rate] [ul-rate ul-rate]
no storm-control
```

Parameter

bc-rate — The maximum ingress rate of the Broadcast. The packet traffic exceeding the bandwidth will be discarded. The value of it can be 128 | 256 | 512kbps or 1 | 2 | 4 | 5 | 10 | 20 | 40 | 50mbps.

mc-rate — The maximum ingress rate of the Multicast packets. The packet traffic exceeding the bandwidth will be discarded. The value of it can be 128 | 256 | 512kbps or 1 | 2 | 4 | 5 | 10 | 20 | 40 | 50mbps.

ul-rate — The maximum ingress rate of the UL-Frame. The packet traffic exceeding the bandwidth will be discarded. The value of it can be 128 | 256 | 512kbps or 1 | 2 | 4 | 5 | 10 | 20 | 40 | 50mbps.

Command Mode

Interface Configuration Mode (interface ethernet / interface range ethernet)

Example

Enable the Storm Control function for port5 and specify the *bc-rate* as 128kbps, *mc-rate* as 512kbps and *ul-rate* as 2Mbps:

```
LP-SGW2404FP(config)# interface ethernet 5
LP-SGW2404FP(config-if)# storm-control bc-rate 128k mc-rate 512k ul-
rate 2m
```

storm-control disable bc-rate

Description

The **storm-control disable bc-rate** command is used to disable the Broadcast packets control.

Syntax

```
storm-control disable bc-rate
```

Command Mode

Interface Configuration Mode (interface ethernet / interface range ethernet)

Example

Disable the Broadcast packets control for port5:

```
LP-SGW2404FP(config)# interface ethernet 5
LP-SGW2404FP(config-if)# storm-control disable bc-rate
```

storm-control disable mc-rate

Description

The **storm-control disable mc-rate** command is used to disable the Multicast packets control.

Syntax

```
storm-control disable mc-rate
```

Command Mode

Interface Configuration Mode (interface ethernet / interface range ethernet)

Example

Disable the Multicast packets control for port5:

```
LP-SGW2404FP(config)# interface ethernet 5
LP-SGW2404FP(config-if)# storm-control disable mc-rate
```

storm-control disable ul-rate

Description

The **storm-control disable ul-rate** command is used to disable the UL-Frame control.

Syntax

```
storm-control disable ul-rate
```

Command Mode

Interface Configuration Mode (interface ethernet / interface range ethernet)

Example

Disable the UL-Frame control for port5:

```
LP-SGW2404FP(config)# interface ethernet 5
LP-SGW2404FP(config-if)# storm-control disable ul-rate
```

port rate-limit

Description

The **port rate-limit** command is used to configure the Rate Limit for an Ethernet port. To disable the Rate Limit, please use **no port rate-limit** command.

Syntax

```
port rate-limit [ ingress ingress-rate ] [ egress egress-rate ]
no port rate-limit
```

Parameter

ingress-rate — Specify the bandwidth for receiving packets. Range: 1-102400 for the megaport, 1-1024000 for the gigaport

egress-rate — Specify the bandwidth for sending packets. Range: 1-102400 for the megaport, 1-1024000 for the gigaport

Command Mode

Interface Configuration Mode (interface ethernet / interface range ethernet)

Example

Configure the *ingress-rate* as 5120K bps and *egress-rate* as 1024K bps for port5:

```
LP-SGW2404FP(config)# interface ethernet 5
LP-SGW2404FP(config-if)# port rate-limit ingress 5120 egress 1024
```

port rate-limit disable ingress

Description

The **port rate-limit disable ingress** command is used to disable the ingress-rate limit.

Syntax

port rate-limit disable ingress

Command Mode

Interface Configuration Mode (interface ethernet / interface range ethernet)

Example

Disable the ingress-rate limit for port5:

```
LP-SGW2404FP(config)# interface ethernet 5
LP-SGW2404FP(config-if)# port rate-limit disable ingress
```

port rate-limit disable egress

Description

The **port rate-limit disable egress** command is used to disable the egress-rate limit.

Syntax

port rate-limit disable egress

Command Mode

Interface Configuration Mode (interface ethernet / interface range ethernet)

Example

Disable the egress-rate limit for port5:

```
LP-SGW2404FP(config)# interface ethernet 5
```

```
LP-SGW2404FP(config-if)# port rate-limit disable egress
```

show interface configuration

Description

The **show interface configuration** command is used to display the configurations of an Ethernet port, including Port-status, Flow Control, Negotiation Mode and Port-description.

Syntax

```
show interface configuration { ethernet [interface] }
```

Parameter

interface — The port selected to display the configurations. By default, the configuration information of all ports is displayed.

Command Mode

Any Configuration Mode

Example

Display the configurations of port5:

```
LP-SGW2404FP# show interface configuration ethernet 5
```

show interface status

Description

The **show interface status** command is used to display the connective-status of an Ethernet port.

Syntax

```
show interface status { ethernet [interface] }
```

Parameter

interface — The port selected to display the connective-status. By default, the connective-status of all ports is displayed.

Command Mode

Any Configuration Mode

Example

Display the connective-status of all Ethernet ports:

```
LP-SGW2404FP(config)# show interface status ethernet
```

show interface counters

Description

The **show interface counters** command is used to display the statistic information of an Ethernet port.

Syntax

```
show interface counters { ethernet [interface] }
```

Parameter

interface — The port selected to display the statistic information. By default, the statistic information of all ports is displayed.

Command Mode

Any Configuration Mode

Example

Display the statistic information of Ethernet port3:

```
LP-SGW2404FP(config)# show interface counters ethernet 3
```

show storm-control ethernet

Description

The **show storm-control ethernet** command is used to display the storm-control information of an Ethernet port.

Syntax

```
show storm-control ethernet [port]
```

Parameter

port — The port-number of the port selected to display the storm-control information. By default, the storm-control information of all ports is displayed.

Command Mode

Any Configuration Mode

Example

Display the storm-control information of all Ethernet ports:

```
LP-SGW2404FP(config)# show storm-control ethernet
```

show port rate-limit

Description

The **show port rate-limit** command is used to display the rate-limit information of an Ethernet port.

Syntax

```
show port rate-limit [interface-num]
```

Parameter

interface-num — The port-number of the port selected to display the rate-limit information. By default, the rate-limit information of all ports is displayed.

Command Mode

Any Configuration Mode

Example

Display the rate-limit information of all Ethernet ports:

```
LP-SGW2404FP(config)# show port rate-limit
```

Chapter 21 QoS Commands

QoS (Quality of Service) function is used to optimize the network performance. It provides you with network service experience of a better quality.

qos

Description

The **qos** command is used to configure CoS (Class of Service) based on port. To return to the default configuration, please use **no qos** command.

Syntax

```
qos cos-id
no qos
```

Parameter

cos-id — The priority of port. It ranges from 0 to 7, which represent CoS0, CoS1, CoS2, CoS3, CoS4, CoS5, CoS6, CoS7 respectively. By default, the priority is 0.

Command Mode

Interface Configuration Mode (interface ethernet / interface range ethernet)

User Guidelines

Port priority is one property of the port. When the port priority is specified, the data will be classified into the egress queue based on the CoS value of the ingress port and the mapping relation between the CoS and T C in IEEE 802.1P.

Example

Configure the priority of port 5 as 3:

```
LP-SGW2404FP(config)# interface ethernet 5
LP-SGW2404FP(config-if)# qos 3
```

qos dot1p config

Description

The **qos dot1p config** command is used to configure the mapping relation between IEEE 802.1P Priority and Egress Queue. To return to the default configuration, please use **no qos dot1p config** command. IEEE 802.1P gives the Pri field in IEEE 802.1Q tag a recommended definition. This field is used to divide packets into 8 priorities. When IEEE 802.1P Priority is enabled, the packets with IEEE 802.1Q tag are mapped to different priority levels based on IEEE 802.1P priority mode. The untagged packets are mapped based on port priority mode.

Syntax

```
qos dot1p config {tag} {pri}
```

no qos dot1p config

Parameter

tag — The 8 priority levels defined by IEEE 802.1P, ranging from 0 to 7.

pri — The priority level the packets with tag are mapped to. It ranges from 0 to 3, which represent TC0, TC1, TC2, TC3 respectively.

Command Mode

Global Configuration Mode

User Guidelines

1. By default, the mapping relation between tag and the egress queue is: 0-TC1, 1-TC0, 2-TC0, 3-TC1, 4-TC2, 5-TC2, 6-TC3, 7-TC3
2. Among the priority levels TC0-TC3, the bigger value, the higher priority.

Example

Map tag value 0 to TC3:

```
LP-SGW2404FP(config)# qos dot1p config 0 3
```

qos dscp enable

Description

The **qos dscp enable** command is used to enable the mapping relation between DSCP Priority and Egress Queue. To disable the mapping relation, please use **no qos dscp enable** command.

Syntax

qos dscp enable

no qos dscp enable

Command Mode

Global Configuration Mode

Example

Enable the mapping relation between DSCP Priority and Egress Queue:

```
LP-SGW2404FP(config)# qos dscp enable
```

qos dscp config

Description

The **qos dscp config** command is used to configure the mapping relation between DSCP Priority and 802.1P Priority. To return to the default configuration, please use **no qos dscp config** command. DSCP (DiffServ Code Point) is a new definition to IP ToS field given by IEEE. This field is used to divide IP datagram into 64 priorities. When DSCP Priority is enabled, IP datagram are mapped to different priority levels based on DSCP priority mode; non-IP datagram with IEEE 802.1Q tag are mapped to different priority levels based on IEEE 802.1P priority mode if IEEE 802.1P Priority is enabled;

the untagged non-IP datagram are mapped based on port priority mode.

Syntax

```
qos dscp config {dscp-list} {cos-id}
no qos dscp config
```

Parameter

dscp-list — List of DSCP value. One or several DSCP values can be typed using comma to separate. Use a hyphen to designate a range of values, for instance, 1,4-7,11 indicates choosing 1,4,5,6,7,11. The DSCP value ranges from 0 to 63.

cos-id — The priority level the packets with tag are mapped to, which ranges from CoS 0 to CoS 7.

Command Mode

Global Configuration Mode

User Guidelines

DSCP priorities are mapped to the corresponding 802.1p priorities. IP datagram will determine its egress queue based on the mapping relation between 802.1p priority and priority levels.

Example

Map DSCP values 10,11,15 to CoS0:

```
LP-SGW2404FP(config)# qos dscp config 10,11,15 0
```

qos scheduler

Description

The **qos scheduler** command is used to configure the Schedule Mode. To return to the default configuration, please use **no qos scheduler** command. When the network is congested, the program that many packets complete for resources must be solved, usually in the way of queue scheduling. The switch will control the forwarding sequence of the packets according to the priority queues and scheduling algorithms you set. On this switch, the priority levels are labeled as TC0, TC1... TC3.

Syntax

```
qos scheduler { sp | wrr | sp+wrr | equ }
no qos scheduler
```

Parameter

sp — Strict-Priority Mode. In this mode, the queue with higher priority will occupy the whole bandwidth. Packets in the queue with lower priority are sent only when the queue with higher priority is empty.

wrr — Weight Round Robin Mode. In this mode, packets in all the queues are sent in order based on the weight value for each queue. The weight value ratio of TC0, TC1, TC2 and TC3 is 1:2:4:8.

sp+wrr — Strict-Priority + Weight Round Robin Mode. In this mode, the switch provides two scheduling groups, SP group and WRR group. Queues in SP group and WRR group are scheduled strictly based on Strict-Priority mode while the queues inside WRR group follow the WRR mode. In SP + WRR mode, TC3 is the SP group; TC0, TC1 and TC2 belong to the WRR group and the weight value ratio of TC0, TC1 and TC2 is 1:2:4. In this way, when scheduling queues, the switch allows TC3 to occupy the whole bandwidth following the SP mode and the TC0, TC1 and TC2 in the WRR group will take up the bandwidth according to their ratio 1:2:4.

equ — Equal-Mode. In this mode, all the queues occupy the bandwidth equally. The weight value ratio of all the queues is 1:1:1:1.

Command Mode

Global Configuration Mode

Example

Specify the Schedule Mode as Weight Round Robin Mode:

```
LP-SGW2404FP(config)# qos scheduler wrr
```

show qos port-based

Description

The **show qos port-based** command is used to display the configuration of QoS based on port priority.

Syntax

```
show qos port-based [interface-num]
```

Parameter

interface-num — The Ethernet port selected to display the configuration. By default, information of all the ports is displayed.

Command Mode

Any Configuration Mode

Example

Display the configuration of QoS for port 5:

```
LP-SGW2404FP# show qos port-based 5
```

show qos dot1p

Description

The **show qos dot1p** command is used to display the configuration of IEEE 802.1P Priority.

Syntax

```
show qos dot1p
```

Command Mode

Any Configuration Mode

Example

Display the configuration of IEEE 802.1P Priority:

```
LP-SGW2404FP# show qos dot1p
```

show qos dscp

Description

The **show qos dscp** command is used to display the configuration of DSCP Priority.

Syntax

```
show qos dscp
```

Command Mode

Any Configuration Mode

Example

Display the configuration of DSCP Priority:

```
LP-SGW2404FP# show qos dscp
```

show qos scheduler

Description

The **show qos scheduler** command is used to display the schedule rule of the egress queues.

Syntax

```
show qos scheduler
```

Command Mode

Any Configuration Mode

Example

Display the schedule rule of the egress queues:

```
LP-SGW2404FP# show qos scheduler
```

Chapter 22 Port Mirror Commands

Port Mirror refers to the process of forwarding copies of packets from one port to a mirroring port. Usually, the mirroring port is connected to data diagnose device, which is used to analyze the mirrored packets for monitoring and troubleshooting the network.

mirror add

Description

The **mirror add** command is used to enable Port Mirror function.

Syntax

```
mirror add [mirrored port] [mirroring port] { none | ingress | egress | both }
[group-num]
```

Parameter

mirrored port — The port to be monitored.

mirroring port — The mirroring port.

none — Remove the mirrored port from the current mirror group.

ingress — Ingress monitoring. Select this option, the incoming packets received by the mirrored port will be copied to the mirroring port.

egress — Egress monitoring. Select this option, the outgoing packets sent by the mirrored port will be copied to the mirroring port.

both — Ingress and Egress monitoring. Select this option, the incoming packets received and the outgoing packets sent by the mirrored port will both be copied to the mirroring port.

group-num — The group number of mirror group.

Command Mode

Global Configuration Mode

Example

Configure port 3 as mirrored port, port 4 as mirroring port, the mirror mode as both and group number as 1 :

```
LP-SGW2404FP(config)# mirror add 3 4 both 1
```

User Guidelines

1. The mirroring port is corresponding to current interface configuration mode.
2. Mirrored ports number is not limited, but it can't be the mirroring port at the same time.
3. Whether the mirroring port and mirrored ports are in the same VLAN or not is not demanded strictly.
4. The mirroring port and mirrored ports cannot be link-aggregation

member.

mirror remove group

Description

The **mirror remove group** command is used to remove mirror group.

Syntax

mirror remove group [*group-num*]

Parameter

group-num—— The group number of mirror group.

Command Mode

Global Configuration Mode

Example

Remove mirror group 1:

```
LP-SGW2404FP(config)# mirror remove group 1
```

mirror remove mirrored

Description

The **mirror remove mirrored** command is used to remove the mirrored port from the mirror group.

Syntax

mirror remove mirrored [*mirrored port*] [*group-num*]

Parameter

mirrored port —— The port to be monitored.

group-num —— The group number of mirror group.

Command Mode

Global Configuration Mode

Example

Remove mirrored port 1,2-4 from mirror group 1:

```
LP-SGW2404FP(config)# mirror remove mirrored 1,2-4 1
```

show mirror

Description

The **show mirror** command is used to display the configuration of mirror group.

Syntax

show mirror [*group-num*]

Parameter

group-num — The group number of mirror group.

Command Mode

Any Configuration Mode

Example

Display configuration for mirror group 1:

```
LP-SGW2404FP# show mirror 1
```

Chapter 23 Port isolation Commands

Port isolation provides a method of restricting traffic flow to improve the network security by forbidding the port to forward packets to the ports that are not on its forwarding port list.

port isolation

Description

The **port isolation** command is used to configure the forward portlist of a port, so that this port can only communicate with the ports on its portlist. To delete the corresponding configuration, please use **no port isolation** command.

Syntax

```
port isolation { forward-list }  
no port isolation
```

Parameter

forward-list — portlist of forward port. It is multi-optional.

Command Mode

Interface Configuration Mode (interface ethernet/interface range ethernet)

Example

Configure port 1 and port 2 can only forward packets to port 6 and port 10:

```
LP-SGW2404FP(config)# interface range ethernet 1-2  
LP-SGW2404FP(config-if)# port isolation 6,10
```

show port isolation

Description

The **show port isolation** command is used to display the forward portlist of a port.

Syntax

```
show port isolation [port]
```

Parameter

port — The port-number you want to show its forward portlist.

Command Mode

Any Configuration Mode

Example

Display the forward-list of port 6:

```
LP-SGW2404FP# show port isolation 6
```

Chapter 24 PoE Commands

PoE (Power over Ethernet) technology describes a system to transmit electrical power along with data to remote devices over standard twisted-pair cable in an Ethernet network. It is especially useful for supplying power to IP telephones, wireless LAN access points, cameras and so on.

power inline consumption (global configuration)

Description

The **power inline consumption** command is used to configure the max power the PoE switch can supply.

Syntax

```
power inline consumption {power limit}
```

Parameter

power limit — The max power the PoE switch can supply, ranging from 1 to 320W.

Command Mode

Global Configuration Mode

Example

Configure the max power the PoE switch can supply as 160W:

```
LP-SGW2404FP(config)# power inline consumption 160
```

power inline disconnect-method

Description

The **power inline disconnect-method** command is used to offset the power limit being exceeded and keep the switch system using power at a usable level.

Syntax

```
power inline disconnect-method {deny-next-port|deny-low-priority}
```

Parameter

deny-next-port — When the supply power exceeds the power limit, the PD linked to the next port will be disconnected.

deny-low priority — When the supply power exceeds the power limit, the PD linked to the port with lower priority will be disconnected.

Command Mode

Global Configuration Mode

Example

Configure the power disconnect method as deny-next-port:

```
LP-SGW2404FP(config)# power inline disconnect-method deny-next-port
```

power inline supply status

Description

The **power inline supply status** command is used to enable or disable the PoE feature for the corresponding port

Syntax

power inline supply status {enable|disable}

Parameter

status — the PoE status of the corresponding port.

Command Mode

Interface Configuration Mode

Example

Enable the PoE feature for port 2.:

```
LP-SGW2404FP(config)# interface ethernet 2
LP-SGW2404FP(config-if)# power inline supply status enable
```

power inline priority

Description

The **power inline priority** command is used to configure the PoE priority for the corresponding port

Syntax

power inline priority {low|middle|high}

Parameter

priority — Cooperates with the Power Disconnected Method to decide the way to supply power to the new linked PD (Powered Device) when the surplus power is inadequate. The priority levels include High, Middle and Low in descending order.

Command Mode

Interface Configuration Mode

Example

Enable the PoE priority as low for port 2.:

```
LP-SGW2404FP(config)# interface ethernet 2
LP-SGW2404FP(config-if)# power inline priority low
```

power inline consumption (interface configuration)

Description

The **power inline consumption** (interface configuration) command is used to configure the power limit the port can supply.

Syntax

power inline consumption *{power limit}*

Parameter

power limit — the max power the corresponding port can supply. The value ranges from 1 to 300. Power limit= this value * 0.1W. For instance, if you want to configure the max power as 5W, you should enter 50.

Command Mode

Interface Configuration Mode

Example

Configure the power limit as 5W for port 2.:

```
LP-SGW2404FP(config)# interface ethernet 2
LP-SGW2404FP(config-if)# power inline consumption 50
```

power inline time-segment

Description

The **power inline time-segment** command is used to configure the time range for the PoE port to supply power. **no power inline time-segment** is used to cancel the selected time-range.

Syntax

```
power inline time-segment {name}
no power inline time-segment
```

Parameter

name — the time-range you have configured.

Command Mode

Interface Configuration Mode

Example

Select the Seg2 as the time range for port 2.:

```
LP-SGW2404FP(config)# interface ethernet 2
LP-SGW2404FP(config-if)# power inline time-segment Seg2
```

power inline profile

Description

The **power inline profile** command is used to choose the PoE profile you want to apply to the selected port. **no power inline profile** is used to cancel the selected PoE profile.

Syntax

```
power inline profile {name}
no power inline profile
```

Parameter

name — the PoE profile you have configured.

Command Mode

Interface Configuration Mode

Example

Select the File2 as the time range for port 2.:

```
LP-SGW2404FP(config)# interface ethernet 2
LP-SGW2404FP(config-if)# power inline profile File2
```

power profile

Description

The **power profile** command is used to create a PoE profile. **no power profile** is used to remove the configured PoE profile. PoE Profile is a short cut for the configuration of the PoE port. You can create some profiles to be applied to the ports. In a profile, the PoE status, PoE priority and Power limit are configured.

Syntax

```
power profile {profile name} [supply-status{enable|disable}] [ priority
{low|middle|high} [consumption {power limit}]
no power profile {profile name}
```

Parameter

profile name — the name of the profile.

supply-status — the PoE status of the port in the profile.

priority — the PoE priority of the port in the profile.

consumption — the max power the port in the profile can supply.

Command Mode

Interface Configuration Mode

Example

Create a PoE profile. Profile name is File2, PoE feature is enabled, PoE priority is low and the power limit is 5W.

```
LP-SGW2404FP(config)# interface ethernet 2
LP-SGW2404FP(config-if)# power inline profile File2 supply-status
enable priority low consumption 50
```

power time-segment

Description

The **power time-segment** command is used to add Time-Range. To delete the corresponding Time-Range, please use **no power time-segment** command. A time-range based PoE enables you to implement PoE power

supply by differentiating the time-ranges. A time-range can be specified for each port. The port will not supply power when the specified time-range is configured and the system time is not within the time-range.

Syntax

```
power time-segment {name} [week-day week-day] [start-date start-date]
[end-date end-date] [holiday {include|exclude}] [time-slice1 time-slice] [time-
slice2 time-slice] [time-slice3 time-slice] [time-slice4 time-slice]
no power time-segment {name}
```

Parameter

name — The Time-Range name, ranging from 1 to 16 characters.

week-day — Period Mode, in the format of 1-3,6 or daily, off-day, working-day. 1 -3,6 represent Monday, Tuesday, Wednesday and Saturday; daily represents every day; off-day represents weekend and working-day represents working day. By default, the period mode is disabled.

start-date — The start date in Absoluteness Mode, in the format of MM/DD/YYYY. By default, it is 01/01/2000.

end-date — The end date in Absoluteness Mode, in the format of MM/DD/YYYY. By default, it is 01/01/2000. The absoluteness mode will be disabled if the start date and end date are both not configured.

holiday — Configure whether the switch supplies power in the holiday or not. By default, the holiday is excluded.

time-slice — Create a time-slice, in the format of HH:MM-HH:MM.

Command Mode

Global Configuration Mode

Example

Add a time-range named tSeg1, with time-slice1 from 8:30 to 12:00 at working day:

```
LP-SGW2404FP(config)# power time-segment tSeg1 week-day working-day
time-slice1 08:30-12:00
```

power holiday

Description

The **power holiday** command is used to create holiday in Holiday Mode in the **power time-segment** command. To delete the corresponding holiday, please use **no power holiday** command.

Syntax

```
power holiday {name} {start-date} {end-date}
no power holiday {name}
```

Parameter

name — The holiday name, ranging from 1 to 16 characters.

start-date — The start date of the holiday, in the format of MM/DD, for instance, 05/01.

end-date — The end date of the holiday, in the format of MM/DD, for instance, 05/03.

Command Mode

Global Configuration Mode

Example

Define National Day, configuring the start date as October 1st, and the end date as October 3rd:

```
LP-SGW2404FP(config)# power holiday NationalDay 10/01 10/03
```

show power inline

Description

The **show power inline** command is used to display the PoE information of the system.

Syntax

```
show power inline
```

Command Mode

Any Configuration Mode

Example

Display the PoE information of the system:

```
LP-SGW2404FP> show power inline
```

show power inline configuration

Description

The **show power inline configuration** command is used to display the PoE configuration of the certain port.

Syntax

```
show power inline configuration [ethernet port]
```

Parameter

port — The port selected to display the PoE configuration, ranging from 1 to 24.

Command Mode

Any Configuration Mode

Example

Display the PoE configuration of all ports:

```
LP-SGW2404FP> show power inline configuration
```

show power inline information

Description

The **show power inline information** command is used to display the PoE information of the certain port.

Syntax

show power inline information [*ethernet port*]

Parameter

port — The port selected to display the PoE information, ranging from 1 to 24.

Command Mode

Any Configuration Mode

Example

Display the PoE information of all ports:

```
LP-SGW2404FP> show power inline information
```

show power time-segment

Description

The **show power time-segment** command is used to display the configuration of Time-Range.

Syntax

show power time-segment [*name*]

Command Mode

Any Configuration Mode

Example

Display the configuration of Time-Range:

```
LP-SGW2404FP> show power time-segment
```

show power holiday

Description

The **show power holiday** command is used to display the defined holiday.

Syntax

show power holiday

Command Mode

Any Configuration Mode

Example

Display the defined holiday:

```
SWITCH> show power holiday
```

show power profile

Description

The **show power profile** command is used to display the defined PoE profile.

Syntax

show power profile

Command Mode

Any Configuration Mode

Example

Display the defined PoE profile:

```
LP-SGW2404FP> show power profile
```

Chapter 25 ACL Commands

ACL (Access C ontrol Li st) is us ed t o f ilter dat a pac kets b y c onfiguring a s eries of matc h conditions, operations and time ranges. It provides a flexible and secured access control policy and facilitates you to control the network security.

acl time-segment

Description

The **acl time-segment** command is used to add Time-Range. To delete the corresponding Time-Range, please use **no acl time-segment** command. A time-range based ACL enables you to implement ACL control over packets by differentiating the time-ranges. A time-range can be specified in each rule in an ACL. The rule takes effect only when the specified time-range is configured and the system time is within the time-range.

Syntax

```
acl time-segment {name} [week-day week-day] [start-date start-date] [end-date end-date] [holiday { disable | enable }] [time-slice1 time-slice] [time-slice2 time-slice] [time-slice3 time-slice] [time-slice4 time-slice]  
no acl time-segment {name}
```

Parameter

name — The Time-Range name, ranging from 1 to 16 characters.

week-day — Period Mode, in the format of 1-3,6 or daily, off-day, working-day. 1 -3,6 r epr esent Monday, T uesday, W ednesday a nd Saturday; d aily represents every day; o ff-day represents weekend and working-day represents working day. By default, the period mode is disabled.

start-date — The s tart dat e i n Absoluteness M ode, i n t he f ormat of MM/DD/YYYY. By default, it is 01/01/2000.

end-date — The end dat e i n Absoluteness M ode, i n t he f ormat o f MM/DD/YYYY. By default, it is 01/01/2000. The absoluteness mode will be disabled if the start date and end date are both not configured.

holiday — Enable/ Disable Holiday Mode. By default, it is disabled.

time-slice — Create a time-slice, in the format of HH:MM-HH:MM.

Command Mode

Global Configuration Mode

Example

Add a time-range named tSeg1, with time-slice1 from 8:30 to 12:00 at working day:

```
LP-SGW2404FP(config)# acl time-segment tSeg1 week-day working-day  
time-slice1 08:30-12:00
```

acl edit time-segment

Description

The **acl edit time-segment** command is used to edit Time-Range.

Syntax

```
acl edit time-segment {name} [week-day week-day] [start-date start-date]
[end-date end-date] [holiday { disable | enable }] [time-slice1 time-slice]
[time-slice2 time-slice] [time-slice3 time-slice] [time-slice4 time-slice]
```

Parameter

name — The Time-Range name, ranging from 1 to 16 characters.

week-day — Period Mode, in the format of 1-3,6 or daily, off-day, working-day. 1 -3, 6 represent Monday, Tuesday, Wednesday and Saturday; daily represents every day; off-day represents weekend and working-day represents working day. By default, the period mode is disabled.

start-date — The start date in Absoluteness Mode, in the format of MM/DD/YYYY. By default, it is 01/01/1970.

end-date — The end date in Absoluteness Mode, in the format of MM/DD/YYYY. By default, it is 12/31/2099. The absoluteness mode will be disabled if the start date and end date are both not configured.

holiday — Enable/ Disable Holiday Mode. By default, it is disabled.

time-slice — Create a time-slice, in the format of HH:MM-HH:MM.

Command Mode

Global Configuration Mode

Example

Edit the time-range named tSeg1, with time-slice1 from 8:30 to 12:00 a t working day:

```
LP-SGW2404FP(config)# acl edit time-segment tSeg1 week-day working-day
time-slice1 08:30-12:00
```

acl holiday

Description

The **acl holiday** command is used to create holiday in Holiday Mode in the **acl time-segment** command. To delete the corresponding holiday, please use **no acl holiday** command.

Syntax

```
acl holiday {name} {start-date} {end-date}
no acl holiday {name}
```

Parameter

name — The holiday name, ranging from 1 to 16 characters.

start-date — The start date of the holiday, in the format of MM/DD, for instance, 05/01.

end-date — The end date of the holiday, in the format of MM/DD, for instance, 05/03.

Command Mode

Global Configuration Mode

Example

Define National Day, configuring the start date as October 1st, and the end date as October 3rd:

```
LP-SGW2404FP(config)# acl holiday NationalDay 10/01 10/03
```

acl create

Description

The **acl create** command is used to create ACL. To delete the corresponding ACL, please use **no acl create** command.

Syntax

```
acl create id
no acl create id
```

Parameter

id — ACL ID, ranging from 0 to 299. 0-99 must be MAC ACL, 100-199 must be Standard-IP ACL, and 200-299 must be Extend-IP ACL.

Command Mode

Global Configuration Mode

Example

Create a MAC ACL whose ID is 20:

```
LP-SGW2404FP(config)# acl create 20
```

acl rule mac-acl

Description

The **acl rule mac-acl** command is used to add MAC ACL rule. To delete the corresponding rule, please use **no acl rule mac-acl** command. MAC ACLs analyze and process packets based on a series of match conditions, which can be the source MAC addresses, destination MAC addresses, VLAN ID, and EtherType carried in the packets.

Syntax

```
acl rule mac-acl {acl-id} {rule-id} [op { discard | permit }] [[smac source-mac]
{smask source-mac-mask}] [[dmac destination-mac] {dmask destination-
mac-mask}] [vid vlan-id] [type ethernet-type] [pri user-pri] [tseg time-
segment]
no acl rule mac-acl {acl-id} {rule-id}
```

Parameter

acl-id — The desired MAC ACL for configuration.

rule-id — The rule ID.

op — The operation for the switch to process packets which match the rules. There are two options, discard and permit. Discard means discarding packets, and permit means forwarding packets. By default, the option is permit.

source-mac — The source MAC address contained in the rule.

source-mac-mask — The source MAC address mask. It is required if you typed the source MAC address.

destination-mac — The destination MAC address contained in the rule.

destination-mac-mask — The destination MAC address mask. It is required if you typed the destination MAC address.

vlan-id — The VLAN ID contained in the rule, ranging from 1 to 4094.

ethernet-type — EtherType contained in the rule, in the format of 4-hex number.

user-pri — The user priority contained in the rule, ranging from 0 to 7. By default, it is not limited.

time-segment — The time-range for the rule to take effect. By default, it is not limited.

Command Mode

Global Configuration Mode

Example

Create a MAC ACL whose ID is 20, and add Rule 10 for it. In the rule, the source MAC address is 00:27:11:48:16:23, the source MAC address mask is 11:11:11:11:11:00, VLAN ID is 2, the user priority is 5, the time-range for the rule to take effect is tSeg1, and the packets match this rule will be forwarded by the switch:

```
LP-SGW2404FP(config)# acl create 20
LP-SGW2404FP(config)# acl rule mac-acl 20 10 op permit smac
00:27:11:48:16:23 smask 11:11:11:11:11:00 vid 2 pri 5 tseg tSeg1
```

acl edit rule mac-acl

Description

The **acl edit rule mac-acl** command is used to edit MAC ACL rule.

Syntax

acl edit rule mac-acl {*acl-id*} {*rule-id*} [**op** {discard | permit}] [[**smac** *source-*

mac {**smask** *source-mac-mask*} [[**dmac** *destination-mac*] {**dmask** *destination-mac-mask*}] [**vid** *vlan-id*] [**type** *ethernet-type*] [**pri** *user-pri*] [**tseg** *time-segment*] [**index** *idx*]

Parameter

acl-id — The desired MAC ACL for configuration.

rule-id — The rule ID.

op — The operation for the switch to process packets which match the rules. There are two options, discard and permit. Discard means discarding packets, and permit means forwarding packets. By default, the option is permit.

source-mac — The source MAC address contained in the rule.

source-mac-mask — The source MAC address mask. It is required if you typed the source MAC address.

destination-mac — The destination MAC address contained in the rule.

destination-mac-mask — The destination MAC address mask. It is required if you typed the destination MAC address.

vlan-id — The VLAN ID contained in the rule, ranging from 1 to 4094.

ethernet-type — EtherType contained in the rule, in the format of 4-hex number.

user-pri — The user priority contained in the rule, ranging from 0 to 7. By default, it is not limited.

time-segment — The time-range for the rule to take effect. By default, it is not limited.

index — Change the index number of the entry.

Command Mode

Global Configuration Mode

Example

Edit the MAC ACL whose ID is 20, and add Rule 10 for it. In the rule, the source MAC address is 00:27:11:48:16:23, the source MAC address mask is 11:11:11:11:11:00, VLAN ID is 2, the user priority is 5, the time-range for the rule to take effect is tSeg1, and the packets match this rule will be forwarded by the switch:

```
LP-SGW2404FP(config)# acl edit rule mac-acl 20 10 op permit smac
00:27:11:48:16:23 smask 11:11:11:11:11:00 vid 2 pri 5 tseg tSeg1
```

acl rule std-acl

Description

The **acl rule std-acl** command is used to add Standard-IP ACL rule. To delete the corresponding rule, please use **no acl rule std-acl** command. Standard-IP ACLs analyze and process data packets based on a series of match conditions, which can be the source IP addresses and destination IP addresses carried in the packets.

Syntax

```
acl rule std-acl {acl-id} {rule-id} [op { discard | permit }] [[sip source-ip]
{smask source-ip-mask}] [[dip destination-ip] {dmask destination-ip-mask}]
[tseg time-segment]
no acl rule std-acl {acl-id} {rule-id}
```

Parameter

acl-id — The desired Standard-IP ACL for configuration.

rule-id — The rule ID.

op — The operation for the switch to process packets which match the rules. There are two options, discard and permit. Discard means discarding packets, and permit means forwarding packets. By default, the option is permit.

source-ip — The source IP address contained in the rule.

source-ip-mask — The source IP address mask. It is required if you typed the source IP address.

destination-ip — The destination IP address contained in the rule.

destination-ip-mask — The destination IP address mask. It is required if you typed the destination IP address.

time-segment — The time-range for the rule to take effect. By default, it is not limited.

Command Mode

Global Configuration Mode

Example

Create a Standard-IP ACL whose ID is 120, and add Rule 10 for it. In the rule, the source IP address is 192.168.0.100, the source IP address mask is 255.255.255.0, the time-range for the rule to take effect is tSeg1, and the packets match this rule will be forwarded by the switch:

```
LP-SGW2404FP(config)# acl create 120
LP-SGW2404FP(config)# acl rule std-acl 120 10 op permit dip
192.168.0.100 dmask 255.255.255.0 tseg tSeg1
```

acl edit rule std-acl

Description

The **acl edit rule std-acl** command is used to edit Standard-IP ACL rule.

Syntax

```
acl edit rule std-acl {acl-id} {rule-id} [op {discard | permit}] [[sip source-ip]
{smask source-ip-mask}] [[dip destination-ip] {dmask destination-ip-mask}]
[tseg time-segment] [index idx]
```

Parameter

acl-id — The desired Standard-IP ACL for configuration.

rule-id — The rule ID.

op — The operation for the switch to process packets which match the rules. There are two options, discard and permit. Discard means discarding packets, and permit means forwarding packets. By default, the option is permit.

source-ip — The source IP address contained in the rule.

source-ip-mask — The source IP address mask. It is required if you typed the source IP address.

destination-ip — The destination IP address contained in the rule.

destination-ip-mask — The destination IP address mask. It is required if you typed the destination IP address.

time-segment — The time-range for the rule to take effect. By default, it is not limited.

index — Change the index number of the entry.

Command Mode

Global Configuration Mode

Example

Edit Rule 10 for the Standard-IP ACL whose ID is 120. In the rule, the source IP address is 192.168.0.100, the source IP address mask is 255.255.255.0, the time-range for the rule to take effect is tSeg1, and the packets match this rule will be forwarded by the switch:

```
LP-SGW2404FP(config)# acl edit rule std-acl 120 10 op permit dip
192.168.0.100 dmask 255.255.255.0 tseg tSeg1
```

acl policy policy-add

Description

The **acl policy policy-add** command is used to add Policy. To delete the corresponding Policy, please use **no acl policy policy-add** command. A Policy is used to control the data packets that match the corresponding ACL rules by configuring ACLs and actions together for effect. The operations here include stream mirror, stream condition, QoS Remarking and redirect.

Syntax

```
acl policy policy-add name
```

no acl policy policy-add *name*

Parameter

name — The Policy Name, ranging from 1 to 16 characters.

Command Mode

Global Configuration Mode

Example

Add a Policy named policy1:

```
LP-SGW2404FP(config)# acl policy policy-add policy1
```

acl policy action-add

Description

The **acl policy action-add** command is used to add ACLs and create actions for the policy. To delete the corresponding actions, please use **no acl policy action-add** command.

Syntax

```
acl policy action-add {policy-name} {acl-id} [rate rate] [osd { none | discard  
}] [e-port egress-port] [dscp dscp] [pri local-pri] [mirr mirror]
```

```
no acl policy action-add {policy-name} {acl-id}
```

Parameter

policy-name — The Policy Name, ranging from 1 to 16 characters.

acl-id — The ACL for configuration in the policy.

rate — The rate of Stream Condition, ranging from 1 to 1000000 in kbps.

osd — Out of Band disposal of Stream Condition. It is the disposal way of the data packets that are transmitted beyond the rate. There are two options, none and discard. By default, the option is none.

egress-port — The Destination Port of Redirect. The data packets that match the corresponding ACL will be forwarded to the specific port. The destination port ranges from 1 to 8. By default, it is All Ports.

dscp — DSCP of QoS Remark. Specify the DSCP region for the data packets that match the corresponding ACL. DSCP ranges from 0 to 63. By default, it is not limited.

local-pri — Local Priority of QoS Remark. Specify the local priority for the data packets that match the corresponding ACL. Local Priority ranges from 0 to 3.

mirror — The Mirror Port of Stream Mirror. By default, it is 1.

Command Mode

Global Configuration Mode

Example

Create a Policy named policy1. For the data packets that match ACL 120 in the policy, if the rate beyond 1000kbps, will be discarded by the switch:

```
LP-SGW2404FP(config)# acl policy policy-add policy1
LP-SGW2404FP(config)# acl policy action-add policy1 120 rate 1000 osd
discard
```

acl edit action

Description

The **acl edit action** command is used to edit actions for the policy.

Syntax

```
acl edit action {policy-name} {acl-id} [rate rate] [osd {none | discard}] [e-port
egress-port] [vid vlan-id] [mirr mirror]
```

Parameter

policy-name — The Policy Name, ranging from 1 to 16 characters.

acl-id — The ACL for configuration in the policy.

rate — The rate of Stream Condition, ranging from 1 to 1000000 in kbps.

osd — Out of Band disposal of Stream Condition. It is the disposal way of the data packets that are transmitted beyond the rate. There are two options, none and discard. By default, the option is none.

egress-port — The Destination Port of Redirect. The data packets that match the corresponding ACL will be forwarded to the specific port. The destination port ranges from 1 to 28. By default, it is All Ports.

vlan-id — The VLAN ID of Redirect. The data packets that match the corresponding ACL will be forwarded in the specific VLAN. The VLAN ID ranges from 1 to 4094.

mirror — The Mirror Port of Stream Mirror. By default, it is 1.

Command Mode

Global Configuration Mode

Example

Edit the actions for the policy1. For the data packets that match ACL 120 in the policy, if the rate beyond 1000kbps, will be discarded by the switch:

```
LP-SGW2404FP(config)# acl edit action policy1 120 rate 1000 osd discard
```

acl bind to-port

Description

The **acl bind to-port** command is used to bind a policy to a port. To cancel the bind relation, please use **no acl bind to-port** command.

Syntax

```

acl bind to-port {policy-name} {port}
no acl bind to-port {policy-name} {port}

```

Parameter

policy-name — The name of the policy desired to bind.

port — The number of the port desired to bind.

Command Mode

Global Configuration Mode

Example

Bind policy1 to Port 1,3-5:

```

LP-SGW2404FP(config)# acl bind to-port policy1 1,3-5

```

acl bind to-vlan

Description

The **acl bind to-vlan** command is used to bind a policy to a VLAN. To cancel the bind relation, please use **no policy to-vlan** command.

Syntax

```

acl bind to-vlan {policy-name} {vlan-id}
no policy to-vlan {policy-name} {vlan-id}

```

Parameter

policy-name — The name of the policy desired to bind.

vlan-id — The ID of the VLAN desired to bind, ranging from 1 to 4094.

Command Mode

Global Configuration Mode

Example

Bind policy1 to VLAN 2,4-6:

```

LP-SGW2404FP(config)# acl bind to-vlan policy1 2,4-6

```

show acl time-segment

Description

The **show acl time-segment** command is used to display the configuration of Time-Range.

Syntax

```

show acl time-segment

```

Command Mode

Any Configuration Mode

Example

Display the configuration of Time-Range:


```
LP-SGW2404FP> show acl time-segment
```

show acl holiday

Description

The **show acl holiday** command is used to display the defined holiday.

Syntax

```
show acl holiday
```

Command Mode

Any Configuration Mode

Example

Display the defined holiday:

```
LP-SGW2404FP> show acl holiday
```

show acl config

Description

The **show acl config** command is used to display the configuration of ACL.

Syntax

```
show acl config acl-id
```

Parameter

acl-id — The ID of the ACL selected to display the configuration.

Command Mode

Any Configuration Mode

Example

Display the configuration of the MAC ACL whose ID is 20:

```
LP-SGW2404FP> show acl config 20
```

show acl bind

Description

The **show acl bind** command is used to display the configuration of Policy bind.

Syntax

```
show acl bind
```

Command Mode

Any Configuration Mode

Example

Display the configuration of Policy bind:

```
LP-SGW2404FP> show acl bind
```

Chapter 26 MSTP Commands

MSTP (Multiple Spanning Tree Protocol), compatible with both STP and RSTP and subject to IEEE 802.1s, can disbranch a ring network. STP is to block redundant links and backup links as well as optimize paths.

spanning-tree global

Description

The **spanning-tree global** command is used to configure STP globally. To return to the default configuration, please use **no spanning-tree global** command.

Syntax

```
spanning-tree global [status { disable | enable }] [mode { stp | rstp | mstp }]
[cist cist] [hetime hello-time] [mage max-age] [delay forward-delay] [hcount
hold-count] [mhops max-hops]
no spanning-tree global
```

Parameter

status — Enable/ Disable STP function globally. By default, it is disabled.

mode — STP Version. There are three options, including STP (Spanning Tree Protocol), RSTP (Rapid Spanning Tree Protocol) and MSTP (Multiple Spanning Tree Protocol). By default, the STP version is STP.

cist — CIST Priority, which must be multiple of 4096 ranging from 0 to 61440. By default, the CIST priority is 32768. CIST Priority is an important criterion on determining the root bridge. In the same condition, the switch with the highest priority will be chosen as the root bridge. The lower value has the higher priority.

hello-time — Hello Time, which is the interval to send BPDU packets, and used to test the links. Hello Time ranges from 1 to 10 in seconds and it is 2 by default. Otherwise, $2 * (\text{Hello Time} + 1) \leq \text{Max Age}$.

max-age — Max Age, which is the maximum time the switch can wait without receiving a BPDU before attempting to reconfigure. Max Age ranges from 6 to 40 in seconds. By default, it is 20.

forward-delay — Forward Delay, which is the time for the port to transit its state after the network topology is changed. Forward Delay ranges from 4 to 30 in seconds and it is 15 by default. Otherwise, $2 * (\text{Forward Delay} - 1) \geq \text{Max Age}$.

hold-count — TxHold Count, which is the maximum number of BPDU packets transmitted per Hello Time interval. TxHold Count ranges from 1 to 20 in pps. By default, it is 5.

max-hops — Max Hops, which is the maximum number of hops that occur

in a specific region before the BPDU is discarded. Max Hops ranges from 1 to 40 in hop. By default, it is 20.

Command Mode

Global Configuration Mode

Example

Enable the STP function, and configure the STP version as MSTP, CIST priority as 4096, Hello Time as 4 seconds, Max Age as 10 seconds, Forward Delay as 10 seconds, TxHold Count as 8pps and Max Hops as 15 hops:

```
LP-SGW2404FP(config)# spanning-tree global status enable mode mstp
cist 4096 htime 4 mage 10 delay 10 hcount 8 mhop 15
```

spanning-tree common-config

Description

The **spanning-tree common-config** command is used to configure the parameters of the ports for comparison in the CIST and the common parameters of all instances. To return to the default configuration, please use **no spanning-tree common-config** command. CIST (Common and Internal Spanning Tree) is the spanning tree in a switched network, connecting all devices in the network.

Syntax

```
spanning-tree common-config [status { disable | enable }] [pri priority]
[expath expath-consum] [inpath inpath-consum] [edge { disable | enable }]
[ptop { auto | open | close }]
no spanning-tree common-config
```

Parameter

status — Enable/ Disable STP function for the desired port. By default, it is disabled.

priority — Port Priority, which must be multiple of 16 ranging from 0 to 240. By default, the port priority is 128. Port Priority is an important criterion on determining if the port connected to this port will be chosen as the root port. In the same condition, the port with the highest priority will be chosen as the root port. The lower value has the higher priority.

expath-consum — ExtPath Cost, which is used to choose the path and calculate the path costs of ports in different MST regions. It is an important criterion on determining the root port. The lower value has the higher priority. By default, it is automatic.

inpath-consum — IntPath Cost, which is used to choose the path and calculate the path costs of ports in an MST region. It is an important criterion on determining the root port. The lower value has the higher priority. By default, it is automatic.

edge — Enable/ Disable Edge Port. By default, it is disabled. The edge port can transit its state from blocking to forwarding rapidly without waiting for

forward delay.

ptop — The P2P link status, with auto, open and close options. By default, the option is auto. If the two ports in the P2P link are root port or designated port, they can transit their states to forwarding rapidly to reduce the unnecessary forward delay.

Command Mode

Interface Configuration Mode (interface ethernet / interface range ethernet)

Example

Enable the STP function of port 1, and configure the Port Priority as 64 , ExtPath Cost as 100, IntPath Cost as 100, and then enable Edge Port:

```
LP-SGW2404FP(config)# interface ethernet 1
LP-SGW2404FP(config-if)# spanning-tree common-config status enable
pri 64 expath 100 inpath 100 edge enable
```

spanning-tree region

Description

The **spanning-tree region** command is used to configure the region of MSTP. A switched network can be divided into many MST regions (Multiple Spanning Tree Regions). An MST region comprises multiple switches which have the same region configuration (including region name and region revision configuration) and the same VLAN-to-spanning-tree mapping configuration.

Syntax

```
spanning-tree region {name} {revision}
```

Parameter

name — The region name, used to identify MST region. It ranges from 1 to 32 characters.

revision — The revision for MST region identification, ranging from 0 to 65535.

Command Mode

Global Configuration Mode

Example

Configure the region name of MSTP as r1, and the revision level as 100:

```
LP-SGW2404FP(config)# spanning-tree region r1 100
```

spanning-tree msti

Description

The **spanning-tree msti** command is used to configure MSTP Instance. To return to the default configuration of the corresponding Instance, please use **no spanning-tree msti** command. Instance Configuration, a property of MST

region, is used to describe the VLAN-to-spanning-tree mapping configuration. You can assign VLAN to different instances appropriate to your needs. Every instance is a VLAN group independent of other instances and CST.

Syntax

spanning-tree msti {*msti-id*} [**status** { disable | enable }] [**pri** *priority*]
[**mapped** *mapped*]

no spanning-tree msti {*msti-id*}

Parameter

msti-id — Instance ID, ranging from 1 to 8.

status — Enable/Disable the corresponding instance. By default, it is disabled.

priority — MSTI Priority, which must be multiple of 4096 ranging from 0 to 61440. By default, it is 32768. MSTI priority is an important criterion on determining if the switch will be chosen as the root bridge in the specific instance.

mapped — VLAN-Instance mapping. Enter the VLAN ID which belongs to the corresponding instance ID, in the format of 1,2-4.

Command Mode

Global Configuration Mode

Example

Enable Instance 1, add VLAN 2, 3, 4, 5, 8 for it, and configure MSTI Priority as 4096:

```
LP-SGW2404FP(config)# spanning-tree msti 1 status enable pri 4096
mapped 2-5,8
```

spanning-tree msti

Description

The **spanning-tree msti** command is used to configure MSTP Instance Port. To return to the default configuration of the corresponding Instance Port, please use **no spanning-tree msti** command. A port can play different roles in different spanning tree instance. You can use this command to configure the parameters of the ports in different instance IDs as well as view status of the ports in the specified instance.

Syntax

spanning-tree msti {*id*} [**pri** *pri*] [**path** *path*]

no spanning-tree msti {*id*}

Parameter

id — The desired instance ID for its port configuration, ranging from 1 to 8.

pri — Port Priority, which must be multiple of 16 ranging from 0 to 240. By default, it is 128. Port Priority is an important criterion on determining if the

port will be chosen as the root port by the device connected to this port.

path — Path Cost, which is used to choose the path and calculate the path costs of ports in an MST region. It is an important criterion on determining the root port. The lower value has the higher priority.

Command Mode

Interface Configuration Mode (interface ethernet / interface range ethernet)

Example

Configure the priority of port 5 in instance 1 as 64, and Path Cost as 100:

```
LP-SGW2404FP(config)# interface ethernet 5
LP-SGW2404FP(config-if)# spanning-tree msti 1 pri 64 path 100
```

spanning-tree tc-defend

Description

The **spanning-tree tc-defend** command is used to configure the TC Protect of Spanning Tree globally. To return to the default configuration, please use **no spanning-tree tc-defend** command. A switch removes MAC address entries upon receiving TC-BPDUs. If a malicious user continuously sends TC-BPDUs to a switch, the switch will be busy with removing MAC address entries, which may decrease the performance and stability of the network.

Syntax

```
spanning-tree tc-defend [ threshold threshold ] [ period period ]
no spanning-tree tc-defend
```

Parameter

threshold — TC Threshold, ranging from 1 to 100 packets. By default, it is 20. TC Threshold is the maximum number of the TC-BPDUs received by the switch in a TC Protect Cycle.

period — TC Protect Cycle, ranging from 1 to 10 in seconds. By default, it is 5.

Command Mode

Global Configuration Mode

Example

Configure TC Threshold as 30 packets, and TC Protect Cycle as 10 seconds:

```
LP-SGW2404FP(config)# spanning-tree tc-defend threshold 30 period 10
```

spanning-tree security

Description

The **spanning-tree security** command is used to configure MSTP Port Protect. To return to the default configuration, please use **no spanning-tree security** command. Port Protect function is to prevent the devices from any malicious attack against STP features.

Syntax

```
spanning-tree security [loop { disable | enable }] [root { disable | enable }]
[TC { disable | enable }] [defend { disable | enable }] [hold { disable | enable }]
no spanning-tree security
```

Parameter

loop — Enable/ Disable Loop Protect. By default, it is disabled. Loop Protect is to prevent the loops in the network brought by recalculating STP because of link failures and network congestions.

root — Enable/ Disable Root Protect. By default, it is disabled. Root Protect is to prevent wrong network topology change caused by the role change of the current legal root bridge.

TC — Enable/ Disable TC Protect. By default, it is disabled.

defend — Enable/ Disable BPDU Protect. By default, it is disabled. BPDU Protect is to prevent the edge port from being attacked by maliciously created BPDUs.

hold — Enable/ Disable BPDU Filter. By default, it is disabled. BPDU Filter is to prevent BPDUs flood in the STP network.

Command Mode

Interface Configuration Mode (interface ethernet / interface range ethernet)

Example

Enable Loop Protect, Root Protect, TC Protect, BPDU Protect, and BPDU Filter for port 2:

```
LP-SGW2404FP(config)# interface ethernet 2
LP-SGW2404FP(config-if)# spanning-tree security loop enable root
enable TC enable defend enable hold enable
```

spanning-tree mcheck

Description

The **spanning-tree mcheck** command is used to enable MCheck.

Syntax

```
spanning-tree mcheck
```

Command Mode

Interface Configuration Mode (interface ethernet / interface range ethernet)

Example

Enable MCheck for port 2:

```
LP-SGW2404FP(config)# interface ethernet 2
LP-SGW2404FP(config-if)# spanning-tree mcheck
```

show spanning-tree global-info

Description

The **show spanning-tree global-info** command is used to display the current status of Spanning Tree.

Syntax

```
show spanning-tree global-info
```

Command Mode

Any Configuration Mode

Example

Display the current status of Spanning Tree:

```
LP-SGW2404FP# show spanning-tree global-info
```

show spanning-tree global-config

Description

The **show spanning-tree global-config** command is used to display the global configuration of Spanning Tree.

Syntax

```
show spanning-tree global-config
```

Command Mode

Any Configuration Mode

Example

Display the global configuration of Spanning Tree:

```
LP-SGW2404FP# show spanning-tree global-config
```

show spanning-tree port-config

Description

The **show spanning-tree port-config** command is used to display the Port configuration of Spanning Tree.

Syntax

```
show spanning-tree port-config [port]
```

Parameter

port — The ports selected to display the configuration. By default, the configuration of all ports is displayed.

Command Mode

Any Configuration Mode

Example

Display the configuration of port 5:

```
LP-SGW2404FP(config)# show spanning-tree port-config 5
```


show spanning-tree region

Description

The **show spanning-tree region** command is used to display the Region configuration of MSTP.

Syntax

```
show spanning-tree region
```

Command Mode

Any Configuration Mode

Example

Display the region configuration of MSTP:

```
LP-SGW2404FP(config)# show spanning-tree region
```

show spanning-tree msti config

Description

The **show spanning-tree msti config** command is used to display the Instance configuration of Spanning Tree.

Syntax

```
show spanning-tree msti config {id}
```

Parameter

id — The ID of the instance selected to display the configuration, ranging from 1 to 8.

Command Mode

Any Configuration Mode

Example

Display the configuration of instance 1:

```
LP-SGW2404FP(config)# show spanning-tree msti config 1
```

show spanning-tree msti port

Description

The **show spanning-tree msti port** command is used to display the Instance Port configuration of Spanning Tree.

Syntax

```
show spanning-tree msti port {id} [port]
```

Parameter

id — Instance ID, ranging from 1 to 8.

port — The port selected to display the configuration. By default, the configuration of all ports is displayed.

Command Mode

Any Configuration Mode

Example

Display the configuration of port 5 in Instance 1:

```
LP-SGW2404FP(config)# show spanning-tree msti port 1 5
```

show spanning-tree security tc-defend

Description

The **show spanning-tree security tc-defend** command is used to display TC Threshold and TC Protect Cycle of Spanning Tree.

Syntax

```
show spanning-tree security tc-defend
```

Command Mode

Any Configuration Mode

Example

Display TC Threshold and TC Protect Cycle of Spanning Tree:

```
LP-SGW2404FP(config)# show spanning-tree security tc-defend
```

show spanning-tree security port-defend

Description

The **show spanning-tree security port-defend** command is used to display the Port Protect configuration of Spanning Tree.

Syntax

```
show spanning-tree security port-defend [port]
```

Parameter

port — The port selected to display the configuration. By default, the Port Protect configuration of all ports is displayed.

Command Mode

Any Configuration Mode

Example

Display the Port Protect configuration of port 2:

```
LP-SGW2404FP(config)# show spanning-tree security port-defend 2
```

Chapter 27 IGMP Commands

IGMP Snooping (Internet Group Management Protocol Snooping) is a multicast control mechanism running on Layer 2 switch. It can effectively prevent multicast groups being broadcasted in the network.

igmp-snooping global

Description

The **igmp-snooping global** command is used to configure IGMP globally. To return to the default configuration, please use **no igmp-snooping global** command.

Syntax

```
igmp-snooping global [status { disable | enable }] [unknown-packet { pass | discard }]
```

```
no igmp-snooping global
```

Parameter

status — Enable/ Disable IGMP Snooping function globally on the switch. By default, it is disabled.

unknown-packet — The operation for the switch to process unknown multicast, with pass and discard options.

Command Mode

Global Configuration Mode

Example

Enable IGMP Snooping function, and specify the operation to process unknown multicast as discard:

```
LP-SGW2404FP(config)# igmp-snooping global status enable unknown-packet discard
```

igmp-snooping config

Description

The **igmp-snooping config status** command is used to configure IGMP Snooping and Fast Leave function for port. To return to the default configuration, please use **no igmp-snooping config** command.

Syntax

```
igmp-snooping config status {disable | enable} fast-leave {disable | enable}
```

```
no igmp-snooping config
```

Parameter

status — Enable/ Disable IGMP Snooping for the desired port.

fast-leave — Enable/ Disable Fast Leave feature for the desired port. If Fast

Leave is enabled for a port, the switch will immediately remove this port from the multicast group upon receiving IGMP leave messages.

Command Mode

Interface Configuration Mode (interface ethernet / interface range ethernet)

Example

Enable IGMP Snooping and Fast Leave function for port 5:

```
LP-SGW2404FP(config)# interface ethernet 5
LP-SGW2404FP(config-if)# igmp-snooping config status enable fast-leave enable
```

igmp-snooping vlan-config-add

Description

The **igmp-snooping vlan-config-add** command is used to configure IGMP Snooping parameters for individual VLANs. To delete the corresponding configuration for the certain VLAN, please use **no igmp-snooping vlan-config-add** command. Multicast groups established by IGMP Snooping are based on VLANs. You can configure different IGMP parameters for different VLANs.

Syntax

```
igmp-snooping vlan-config-add {vlan-id} [rtime router-time] [mtime member-time] [ltime leave-time] [rport router-port]
```

```
no igmp-snooping vlan-config-add {vlan-id}
```

Parameter

vlan-id — The ID of the VLAN desired to enable IGMP Snooping, ranging from 1 to 4094.

router-time — Router Port Time. Within this time, if the switch does not receive IGMP query message from the router port, it will consider this port is not a router port any more. Router Port Time ranges from 60 to 600 in seconds. By default, it is 300.

member-time — Member Port Time. Within this time, if the switch does not receive IGMP report message from the member port, it will consider this port is not a member port any more. Member Port Time ranges from 60 to 600 in seconds. By default, it is 260.

leave-time — Leave Time, which is the interval between the switch receiving a leave message from a host and the switch removing the host from the multicast groups. Leave Time ranges from 1 to 30 in seconds. By default, it is 1.

router-port — Static Router Port, which is mainly used in the network with stable topology.

Command Mode

Global Configuration Mode

Example

Enable IGMP Snooping for VLAN 1, and configure Router Port Time as 200 seconds, Member Port Time as 100 seconds, Leave time as 10 seconds and Static Router Port as port 1:

```
LP-SGW2404FP(config)# igmp-snooping vlan-config-add 1 rtime 200
mtime 100 ltime 10 rport 1
```

igmp-snooping vlan-config

Description

The **igmp-snooping vlan-config** command is used to modify IGMP Snooping parameters for individual VLANs. To return to the primary configuration of the corresponding VLAN, please use **no igmp-snooping vlan-config** command.

Syntax

```
igmp-snooping vlan-config {vlan-id} [rtime router-time] [mtime member-time] [ltime leave-time] [rport router-port]
no igmp-snooping vlan-config {vlan-id}
```

Parameter

vlan-id — The ID of the VLAN desired to modify configuration, ranging from 1 to 4094.

router-time — Router Port Time. Within this time, if the switch does not receive IGMP query message from the router port, it will consider this port is not a router port anymore. Router Port Time ranges from 60 to 600 in seconds. By default, it is 300.

member-time — Member Port Time. Within this time, if the switch does not receive IGMP report message from the member port, it will consider this port is not a member port anymore. Member Port Time ranges from 60 to 600 in seconds. By default, it is 260.

leave-time — Leave Time, which is the interval between the switch receiving a leave message from a host and the switch removing the host from the multicast groups. Leave Time ranges from 1 to 30 in seconds. By default, it is 1.

router-port — Static Router Port, which is mainly used in the network with stable topology.

Command Mode

Global Configuration Mode

Example

Modify Router Port Time as 300 seconds, Member Port Time as 200 seconds, and Leave time as 15 seconds for VLAN 1:

```
LP-SGW2404FP(config)# igmp-snooping vlan-config 1 rtime 300 mtime
200 ltime 15
```

igmp-snooping multi-vlan-config

Description

The **igmp-snooping multi-vlan-config** command is used to create Multicast VLAN. To delete the corresponding Multicast VLAN, please use **no igmp-snooping multi-vlan-config** command.

Syntax

igmp-snooping multi-vlan-config { disable | enable } { *vid* } [**rtime** *router-time*] [**mtime** *member-time*] [**ltime** *leave-time*] [**rport** *router-port*]

no igmp-snooping multi-vlan-config

Parameter

disable | enable — Enable/ Disable Multicast VLAN.

vid — The ID of the VLAN desired to modify configuration, ranging from 2 to 4094.

router-time — Router Port Time. Within this time, if the switch does not receive IGMP query message from the router port, it will consider this port is not a router port anymore. Router Port Time ranges from 60 to 600 in seconds. By default, it is 300.

member-time — Member Port Time. Within this time, if the switch does not receive IGMP report message from the member port, it will consider this port is not a member port any more. Member Port Time ranges from 60 to 600 in seconds. By default, it is 260.

leave-time — Leave Time, which is the interval between the switch receiving a leave message from a host and the switch removing the host from the multicast groups. Leave Time ranges from 1 to 30 in seconds. By default, it is 1.

router-port — Static Router Port, which is mainly used in the network with stable topology.

Command Mode

Global Configuration Mode

Example

Enable Multicast VLAN, and configure Router Port Time as 300 seconds, Member Port Time as 200 seconds, and Leave time as 15 seconds for VLAN 2:

```
LP-SGW2404FP(config)# igmp-snooping multi-vlan-config enable 2 rtime
300 mtime 200 ltime 15
```

igmp-snooping static-entry-add

Description

The **igmp-snooping static-entry-add** command is used to create static multicast IP entry. To delete the corresponding entry, please use **no igmp-snooping static-entry-add** command. The multicast groups configured here are not learned by IGMP Snooping and independent of dynamic multicast

groups and multicast filter. Multicast IP addresses ranges from 224.0.0.0 to 239.255.255.255. The range for receivers to join is from 224.0.1.0 to 239.255.255.255.

Syntax

igmp-snooping static-entry-add *{ip}* *{vlan-id}* *{switch-port}*
no igmp-snooping static-entry-add *{ip}* *{vlan-id}*

Parameter

ip — The static multicast IP address.

vlan-id — The VLAN ID of the multicast IP, ranging from 1 to 4094.

switch-port — The forward port of the multicast group, in the format of 1-3,6.

Command Mode

Global Configuration Mode

Example

Add static multicast IP address 225.0.0.1, which correspond to VLAN 2, and configure the forward port as port 1:

```
LP-SGW2404FP(config)# igmp-snooping static-entry-add 225.0.0.1 2 1
```

igmp-snooping filter-add

Description

The **igmp-snooping filter-add** command is used to configure the multicast IP-range desired to filter. To delete the corresponding IP-range, please use **no igmp-snooping filter-add** command. When IGMP Snooping is enabled, you can specified the multicast IP-range the ports can join so as to restrict users ordering multicast programs via configuring multicast filter rules. Multicast IP addresses ranges from 224.0.0.0 to 239.255.255.255. The range for receivers to join is from 224.0.1.0 to 239.255.255.255.

Syntax

igmp-snooping filter-add *{id}* *{start-ip}* *{end-ip}*
no igmp-snooping filter-add *{id}*

Parameter

id — IP-range ID, ranging from 1 to 30.

start-ip — The start multicast IP of the IP-range.

end-ip — The end multicast IP of the IP-range.

Command Mode

Global Configuration Mode

Example

Add multicast IP-range 225.0.0.1~225.0.0.4 to filter, and specify the IP-range ID as 20:

```
LP-SGW2404FP(config)# igmp-snooping filter-add 20 225.0.0.1 225.0.0.4
```

igmp-snooping filter-config

Description

The **igmp-snooping filter-config** command is used to modify the multicast filtering IP-range.

Syntax

```
igmp-snooping filter-config {id} {start-ip} {end-ip}
```

Parameter

id — IP-range ID, ranging from 1 to 30.

start-ip — The start multicast IP of the IP-range.

end-ip — The end multicast IP of the IP-range.

Command Mode

Global Configuration Mode

Example

Modify the multicast IP-range whose ID is 20 as 225.0.0.10~225.0.0.12:

```
LP-SGW2404FP(config)# igmp-snooping filter-config 20 225.0.0.10
225.0.0.12
```

igmp-snooping filter

Description

The **igmp-snooping filter** command is used to configure Port Filter. To return to the default configuration, please use **no igmp-snooping filter** command. When the switch receives IGMP report message, it examines the multicast filtering IP ID configured on the access port to determine if the port can join the multicast group. If the multicast IP is not filtered, the switch will add the port to the forward port list of the multicast group. Otherwise, the switch will drop the IGMP report message. In that way, you can control the multicast groups that users can access.

Syntax

```
igmp-snooping filter [ status [disable | enable] | mode [refuse | accept] |
addr-id [filter-addr-id] | maxgroup [max-group] ]
no igmp-snooping filter
```

Parameter

status — Enable/ Disable port multicast filtering function. By default, it is disabled.

mode — Action Mode, with refuse and accept options. Refuse indicates only the multicast packets whose multicast IP is not in the IP-range will be processed, while accept indicates only the multicast packets whose multicast

IP is in the IP-range will be processed. By default, the option is accept.

filter-addr-id — The IP-range ID the port will be bound to, in the format of 1-3, 4, 6. Up to 5 IP-Ranges can be bound to one port.

max-group — The maximum number of multicast groups for the port to join in. It is used to prevent some ports taking up too much bandwidth.

Command Mode

Interface Configuration Mode (interface ethernet / interface range ethernet)

Example

Enable multicast filtering function for port 5, specify Action Mode as accept, bound IP-range 2, 3, 4, and specify the maximum number of multicast groups for port 5 to join in as 128:

```
LP-SGW2404FP(config)# interface ethernet 5
LP-SGW2404FP(config-if)# igmp-snooping filter status enable mode
accept addr-id 2-4 maxgroup 128
```

show igmp-snooping global-config

Description

The **show igmp-snooping global-config** command is used to display the global configuration of IGMP.

Syntax

```
show igmp-snooping global-config
```

Command Mode

Any Configuration Mode

Example

Display the global configuration of IGMP:

```
LP-SGW2404FP> show igmp-snooping global-config
```

show igmp-snooping port-config

Description

The **show igmp-snooping port-config** command is used to display the port configuration of IGMP.

Syntax

```
show igmp-snooping port-config [port]
```

Parameter

port — The port selected to display the configuration. By default, the configuration of all ports is displayed.

Command Mode

Any Configuration Mode

Example

Display the IGMP configuration of port 2:

```
LP-SGW2404FP> show igmp-snooping port-config 2
```

show igmp-snooping vlan-config

Description

The **show igmp-snooping vlan-config** command is used to display the VLAN configuration of IGMP.

Syntax

```
show igmp-snooping vlan-config
```

Command Mode

Any Configuration Mode

Example

Display the VLAN configuration of IGMP:

```
LP-SGW2404FP> show igmp-snooping vlan-config
```

show igmp-snooping multi-vlan

Description

The **show igmp-snooping multi-vlan** command is used to display the Multicast VLAN configuration.

Syntax

```
show igmp-snooping multi-vlan
```

Command Mode

Any Configuration Mode

Example

Display the Multicast VLAN configuration:

```
LP-SGW2404FP> show igmp-snooping multi-vlan
```

show igmp-snooping multi-ip-list

Description

The **show igmp-snooping multi-ip-list** command is used to display the Multicast IP table.

Syntax

```
show igmp-snooping multi-ip-list
```

Command Mode

Any Configuration Mode

Example

Display the Multicast IP table:

```
LP-SGW2404FP> show igmp-snooping multi-ip-list
```

show igmp-snooping filter-ip-addr

Description

The **show igmp-snooping filter-ip-addr** command is used to display the Multicast Filter IP-Range table.

Syntax

```
show igmp-snooping filter-ip-addr
```

Command Mode

Any Configuration Mode

Example

Display the Multicast Filter IP-Range table:

```
LP-SGW2404FP(config)# show igmp-snooping filter-ip-addr
```

show igmp-snooping port-filter

Description

The **show igmp-snooping port-filter** command is used to display the configuration of Multicast Port Filter.

Syntax

```
show igmp-snooping port-filter [port-num]
```

Parameter

port-num — The port selected to display the configuration of Multicast Filter. By default, the configuration of all ports is displayed.

Command Mode

Any Configuration Mode

Example

Display the Multicast Filter configuration of port 5:

```
LP-SGW2404FP> show igmp-snooping port-filter 5
```

show igmp-snooping packet-stat

Description

The **show igmp-snooping packet-stat** command is used to display the Packet Statistics information of all ports.

Syntax

```
show igmp-snooping packet-stat
```

Command Mode

Any Configuration Mode

Example

Display the Packet Statistics information:

```
LP-SGW2404FP> show igmp-snooping packet-stat
```

show igmp-snooping packet-stat-clear

Description

The **show igmp-snooping packet-stat-clear** command is used to clear the Packet Statistics information of all ports.

Syntax

show igmp-snooping packet-stat-clear

Command Mode

Any Configuration Mode

Example

Clear the Packet Statistics information:

```
LP-SGW2404FP> show igmp-snooping packet-stat-clear
```

Chapter 28 SNMP Commands

SNMP (Simple Network Management Protocol) functions are used to manage the network devices for a smooth communication, which can facilitate the network administrators to monitor the network nodes and implement the proper operation.

snmp global

Description

The **snmp global** command is used to configure the SNMP function globally. To return to the default configuration, please use **no snmp global** command.

Syntax

```
snmp global [status { disable | enable }] [engine-id engine-id] [remote-id remote-id]
```

```
no snmp global
```

Parameter

status — Enable/ Disable the SNMP function. By default, it is disabled.

engine-id — Local Engine ID for local clients. The Engine ID is a unique alphanumeric string used to identify the SNMP engine on the switch. Its length ranges from 10 to 64 hexadecimal characters, which must be even number meanwhile.

remote-id — Remote Engine ID for switch. The Engine ID is a unique alphanumeric string used to identify the SNMP engine on the remote device which receives traps and informs from switch. Its length ranges from 10 to 64 hexadecimal characters which must be even number meanwhile.

Command Mode

Global Configuration Mode

Example

Enable the SNMP function, and specify the Local Engine ID as 1234567890, the Remote Engine ID as 123456abcdef:

```
LP-SGW2404FP(config)# snmp global status enable engine-id
1234567890 remote-id 123456abcdef
```

snmp view-add

Description

The **snmp view-add** command is used to add View. To delete the corresponding View, please use **no snmp view-add** command. The OID (Object Identifier) of the SNMP packets is used to describe the managed objects of the switch, and the MIB (Management Information Base) is the set of the OIDs. The SNMP View is created for the SNMP management station to manage MIB objects.

Syntax

```
snmp view-add {name} {mib-oid} { include | exclude }
no snmp view-add {name} {mib-oid}
```

Parameter

name — The entry name of View, ranging from 1 to 16 characters. Each View can include several entries with the same name.

mib-oid — MIB Object ID. It is the Object Identifier (OID) for the entry of View, ranging from 1 to 61 characters.

include | exclude — View Type, with *include* and *exclude* options. They represent the view entry can/cannot be managed by the SNMP management station individually.

Command Mode

Global Configuration Mode

Example

Add a View named *view1*, configuring the OID as 1.3.6.1.6.3.20, and this OID can be managed by the SNMP management station:

```
LP-SGW2404FP(config)# snmp view-add view1 1.3.6.1.6.3.20 include
```

snmp group-add

Description

The **snmp group-add** command is used to manage and configure the SNMP group. To delete the corresponding SNMP group, please use **no snmp group-add** command. SNMP v3 provides the VACM (View-based Access Control Model) and USM (User-Based Security Model) mechanisms for authentication. The users in the SNMP Group can manage the device via the Read View, Write View and Notify View. And the authentication mode and the privacy mode guarantee the high security for the communication between the management station and the managed device.

Syntax

```
snmp group-add {name} [smode { v1 | v2c | v3 }] [slev { noAuthNoPriv |
authNoPriv | authPriv }] [ro ro-view] [wo wo-view] [notify notify-view]
no snmp group-add {name} {smode { v1 | v2c | v3 }} {slev { noAuthNoPriv |
authNoPriv | authPriv }}
```

Parameter

name — The SNMP Group name, ranging from 1 to 16 characters. The Group Name, Security Model and Security Level compose the identifier of the SNMP Group. These three items of the Users in one group should be the same.

smode — Security Model, with *v1*、*v2c* and *v3* options. They represent SNMP v1, SNMP v2c and SNMP v3. SNMP v1 and SNMP v2c are both

authenticated by Community Name (please refer [snmp community-add](#) for detailed information), SNMP v3 is authenticated by USM mechanism. By default, the Security Model is v1.

slev — The Security Level of SNMP v3 Group. There are three options, including **noAuthNoPriv** (no authentication and no encryption), **authNoPriv** (authorization and no encryption) and **authPriv** (authorization and encryption). By default, the Security Level is **noAuthNoPriv**. There is no need to configure this in SNMP v1 Model and SNMP v2c Model.

ro-view — Read-only view. The management access is restricted to read-only, and changes cannot be made to the assigned SNMP View.

wo-view — Write-only view. The management access is writing only and changes can be made to the assigned SNMP View. The View defined both as the Read View and the Write View can be read and modified.

notify-view — Notify view. The management station software can receive trap messages of the assigned SNMP view generated by the Switch's SNMP agent.

Command Mode

Global Configuration mode

Example

Add group 1, configure its Security Model as SNMP v2c, view1 can be read and edited by group member, and the trap messages sent by view2 can be received by Management station:

```
LP-SGW2404FP(config)# snmp group-add group1 smode v2c ro view1 wo
view1 notify view2
```

snmp user-add

Description

The **snmp user-add** command is used to add User. To delete the corresponding User, please use **no snmp user-add** command. The User in a SNMP Group can manage the switch via the management station software. The User and its Group have the same security level and access right.

Syntax

```
snmp user-add {name} {local | remote} {group-name} [smode {v1 | v2c | v3
}] [slev {noAuthNoPriv | authNoPriv | authPriv}] [cmode {none | MD5 | SHA
}] [cpwd confirm-pwd] [emode {none | DES}] [epwd encrypt-pwd]
no snmp user-add {name}
```

Parameter

name — User Name, ranging from 1 to 16 characters.

local | remote — User Type, with local and remote options. Local indicates that the user is connected to a local SNMP engine, while remote indicates that the user is connected to a remote SNMP engine.

group-name — The Group Name of the User. The User is classified to the corresponding Group according to its Group Name, Security Model and Security Level.

smode — The Security Model of the User, with v1, v2c and v3 options. By default, the option is v1. The Security Model of the User must be the same with that of the Group which the User belongs to.

slev — The Security Level of SNMP v3 Group. There are three options, including noAuthNoPriv (no authentication and no encryption), authNoPriv (authorization and no encryption) and authPriv (authorization and encryption). By default, the option is noAuthNoPriv. The Security Level of the User must be the same with that of the Group which the User belongs to.

cmode — The Authentication Mode of the SNMP v3 User, with none, MD5 and SHA options. None indicates no authentication method is used, MD5 indicates the port authentication is performed via HMAC-MD5 algorithm and SHA indicates the port authentication is performed via SHA (Secure Hash Algorithm). SHA authentication mode has a higher security than MD5 mode. By default, the Authentication Mode is none.

confirm-pwd — Authentication Password, ranging from 1 to 16 characters.

emode — The Privacy Mode of the SNMP v3 User, with none and DES options. None indicates no privacy method is used, and DES indicates DES encryption method is used. By default, the Privacy Mode is none.

encrypt-pwd — Privacy Password, ranging from 1 to 16 characters.

Command Mode

Global Configuration Mode

Example

Add User admin to Group group2, and configure the Security Model of the user as v3, the Security Level of the group as authPriv, the Authentication Mode of the user as MD5, the Authentication Password as 11111, the Privacy Mode as DES, and the Privacy Password as 22222:

```
LP-SGW2404FP(config)# snmp user-add admin local group2 smode v3
slev authPriv cmode MD5 cpwd 11111 emode DES epwd 22222
```

snmp community-add

Description

The **snmp community-add** command is used to add Community. To delete the corresponding Community, please use **no snmp community-add**

command. SNMP v1 and SNMP v2c adopt community name authentication. The community name can limit access to the SNMP agent from SNMP network management station, functioning as a password.

Syntax

```
snmp community-add {name} { read-only | read-write } {mib-view}
no snmp community-add {name}
```

Parameter

name — Community Name, ranging from 1 to 16 characters.

read-only | read-write — The access rights of the community, with read-only and read-write options.

mib-view — The MIB View for the community to access.

Command Mode

Global Configuration Mode

Example

Add Community community1, and the community has read-write management right to View view1:

```
LP-SGW2404FP(config)# snmp community-add community1 read-write
view1
```

snmp notify-add

Description

The **snmp notify-add** command is used to add Notification. To delete the corresponding Notification, please use **no snmp notify-add** command. With the Notification function enabled, the switch can initiate report to the management station about the important events that occur on the Views, which allows the management station to monitor and process the events in time.

Syntax

```
snmp notify-add {ip} {udp-port} {user-name} [smode { v1 | v2c | v3 }] [slev {
noAuthNoPriv | authNoPriv | authPriv }] [type { trap | inform }] [resend resend]
[timeout timeout]
no snmp notify-add {ip} {user-name}
```

Parameter

ip — The IP Address of the management Host.

udp-port — UDP port, which is used to send notifications. The UDP port functions with the IP address for the notification sending. By default, it is 162.

user-name — The User name of the management station.

smode — The Security Model of the management station, with v1, v2c and v3 options. By default, the option is v1.

slev — The Security Level of SNMP v3 Group. There are three options, including *noAuthNoPriv* (no authentication and no encryption), *authNoPriv* (authorization and no encryption) and *authPriv* (authorization and encryption). By default, the option is *noAuthNoPriv*.

type — The type of the notifications, with *trap* and *inform* options. *Trap* indicates traps are sent, while *inform* indicates informs are sent. The *inform* type has a higher security than the *trap* type and *resend* and *timeout* need to be configured if you select this option. You can only select the *trap* type in Security Model v1. By default, the type of the notifications is *trap*.

resend — The amount of times the switch resends an *inform* request, ranging from 1 to 255. The switch will resend the *inform* request if it doesn't get the response from the management station during the *Timeout* interval, and it will terminate resending the *inform* request if the resending times reach the specified *Retry* times.

timeout — The maximum time for the switch to wait for the response from the management station before resending a request, ranging from 1 to 3600 in seconds.

Command Mode

Global Configuration Mode

Example

Add a Notification entry, and configure the IP Address of the management Host as 192.168.0.1, the UDP port as 162, the User name of the management station as *admin*, the Security Model of the management station as *v2c*, the type of the notifications as *inform*, the maximum time for the switch to wait as 1000 seconds, and the resending time as 100:

```
LP-SGW2404FP(config)# snmp notify-add 192.168.0.1 162 admin smode
v2c type inform resend 100 timeout 1000
```

snmp-rmon history sample-cfg

Description

The **snmp-rmon history sample-cfg** command is used to configure the history sample entry. To return to the default configuration, please use **no snmp-rmon history sample-cfg** command. RMON (Remote Monitoring), based on SNMP architecture, functions to monitor the network. History Group is one of the commonly used RMON Groups. After a history group is configured, the switch collects network statistics information periodically, based on which the management station can monitor network effectively.

Syntax

```
snmp-rmon history sample-cfg {index} {port} {interval}
no snmp-rmon history sample-cfg {index}
```

Parameter

index — The index number of the entry, ranging from 1 to 12, in the format

of 1-3,5.

port — The port from which the history samples were taken.

interval — The interval to take samplings from the port, ranging from 10 to 3600 in seconds. By default, it is 1800.

Command Mode

Global Configuration Mode

Example

Configure the sample port as 1, and the sample interval as 100 seconds for the entries 1-3:

```
LP-SGW2404FP(config)# snmp-rmon history sample-cfg 1-3 1 100
```

snmp-rmon history owner

Description

The **snmp-rmon history owner** command is used to configure the owner of the history sample entry. To return to the default configuration, please use **no snmp-rmon history owner** command.

Syntax

```
snmp-rmon history owner {index} [owner]
no snmp-rmon history owner {index}
```

Parameter

index — The index number of the sample entry, ranging from 1 to 12. You can only select one entry for each command.

owner — The owner of the history sample entry, ranging from 1 to 16 characters. By default, it is monitor.

Command Mode

Global Configuration Mode

Example

Configure the owner of entry 1 as owner1:

```
LP-SGW2404FP(config)# snmp-rmon history owner 1 owner1
```

snmp-rmon history enable

Description

The **snmp-rmon history enable** command is used to enable the history sample entry. To disable the corresponding entry, please use **no snmp-rmon history enable** command.

Syntax

```
snmp-rmon history enable {index}
no snmp-rmon history enable {index}
```

Parameter

index — The index number of the entry desired to enable, ranging from 1 to 12, in the format of 1-3,5.

Command Mode

Global Configuration Mode

Example

Enable the history sample entries 1,2,3,4 and 8:

```
LP-SGW2404FP(config)# snmp-rmon history enable 1-4,8
```

snmp-rmon event user

Description

The **snmp-rmon event user** command is used to configure the user name of SNMP-RMON Event. To return to the default configuration, please use **no snmp-rmon event user** command. Event Group, as one of the commonly used RMON Groups, is used to define RMON events. Alarms occur when an event is detected.

Syntax

```
snmp-rmon event user {index} [user]
no snmp-rmon event user {index}
```

Parameter

index — The index number of the event entry, ranging from 1 to 12. You can only select one entry for each command.

user — The name of the User to which the event belongs, ranging from 1 to 16 characters. By default, it is public.

Command Mode

Global Configuration Mode

Example

Configure the user name of entry 1 as user1:

```
LP-SGW2404FP(config)# snmp-rmon event user 1 user1
```

snmp-rmon event description

Description

The **snmp-rmon event description** command is used to configure the description of SNMP-RMON Event. To return to the default configuration, please use **no snmp-rmon event description** command.

Syntax

```
snmp-rmon event description {index} {description}
no snmp-rmon event description {index}
```

Parameter

index — The index number of the event entry, ranging from 1 to 12. You can

only select one entry for each command.

description — The description of the event, ranging from 1 to 16 characters.

By default, it is empty.

Command Mode

Global Configuration Mode

Example

Configure the description of entry 1 as description1:

```
LP-SGW2404FP(config)# snmp-rmon event description 1 description1
```

snmp-rmon event type

Description

The **snmp-rmon event type** command is used to configure the type of SNMP-RMON Event. To return to the default configuration, please use **no snmp-rmon event type** command.

Syntax

```
snmp-rmon event type {index} { none | log | notify | both }
```

```
no snmp-rmon event type {index}
```

Parameter

index — The index number of the entry, ranging from 1 to 12, in the format of 1-3,5.

none | log | notify | both — The event type, with none, log, notify and both options. None indicates no processing, log indicates logging the event, notify indicates sending trap messages to the management station, and both indicates logging the event and sending trap messages to the management station.

Command Mode

Global Configuration Mode

Example

Configure the event type of entries 1,2,3,4 and 8 as log:

```
LP-SGW2404FP(config)# snmp-rmon event type 1-4,8 log
```

snmp-rmon event owner

Description

The **snmp-rmon event owner** command is used to configure the owner of SNMP-RMON Event. To return to the default configuration, please use **no snmp-rmon event owner** command.

Syntax

```
snmp-rmon event owner {index} [owner]
```

```
no snmp-rmon event owner {index}
```

Parameter

index — The index number of the event entry, ranging from 1 to 12. You can only select one entry for each command.

owner — The owner of the event entry, ranging from 1 to 16 characters. By default, it is monitor.

Command Mode

Global Configuration Mode

Example

Configure the owner of entry 1 as owner1:

```
LP-SGW2404FP(config)# snmp-rmon event owner 1 owner1
```

snmp-rmon event enable

Description

The **snmp-rmon event enable** command is used to enable SNMP-RMON Event entry. To disable the corresponding entry, please use **no snmp-rmon event enable** command.

Syntax

```
snmp-rmon event enable {index}
no snmp-rmon event enable {index}
```

Parameter

index — The index number of the entry desired to enable, ranging from 1 to 12, in the format of 1-3,5.

Command Mode

Global Configuration Mode

Example

Enable the SNMP-RMON Event entries 1,2,3,4 and 8:

```
LP-SGW2404FP(config)# snmp-rmon event enable 1-4,8
```

snmp-rmon alarm config

Description

The **snmp-rmon alarm config** command is used to configure SNMP-RMON Alarm Management. To return to the default configuration, please use **no snmp-rmon alarm config** command. Alarm Group is one of the commonly used RMON Groups. RMON alarm management allows monitoring the specific alarm variables. When the value of a monitored variable exceeds the threshold, an alarm event is generated, which triggers the switch to act in the set way.

Syntax

```
snmp-rmon alarm config {index} [var { drop | revbyte | revpkt | bpkt | mpkt |
crc-align | undersize | oversize | fragment | jabber | collision | 64 | 65-127 |
```

```
128-511 | 512-1023 | 1024-10240 }} [port port] [s-type { absolute | increment
}} [r-hold r-hold] [r-event r-event] [f-hold f-hold] [f-event f-event] [a-type { rise
| fall | all }} [interval interval]
no snmp-rmon alarm config {index}
```

Parameter

index — The index number of the Alarm Management entry, ranging from 1 to 12, in the format of 1-3,5.

var — The alarm variable. By default, the option is drop.

port — The port on which the Alarm entry acts, ranging from 1 to 10.

s-type — Sample Type, which is the sampling method for the selected variable and comparing the value against the thresholds. There are two options, absolute and increment. Absolute indicates comparing the values directly with the thresholds at the end of the sampling interval. Increment indicates subtracting the last sampled value from the current value, and then comparing the difference in the values with the threshold. By default, the Sample Type is absolute.

r-hold — The rising counter value that triggers the Rising Threshold alarm, ranging from 1 to 65535. By default, it is 100.

r-event — Rise Event, which is the index of the corresponding event which will be triggered if the sampled value is larger than the Rising Threshold. It ranges from 1 to 12.

f-hold — The falling counter value that triggers the Falling Threshold alarm, ranging from 1 to 65535. By default, it is 100.

f-event — Fall Event, which is the index of the corresponding event which will be triggered if the sampled value is lower than the Falling Threshold. It ranges from 1 to 12.

a-type — Alarm Type, with rise, fall and all options. Rise indicates that the alarm event will be triggered when the sampled value exceeds the Rising Threshold, fall indicates that the alarm event will be triggered when the sampled value is under the Falling Threshold, and all indicates that the alarm event will be triggered either the sampled value exceeds the Rising Threshold or is under the Fall Hold. By default, the Alarm Type is all.

interval — The alarm interval time, ranging from 10 to 3600 in seconds. By default, it is 1800.

Command Mode

Global Configuration Mode

Example

Configure the alarm interval time of the entries 1,2,3 and 6 as 1000 seconds:

```
LP-SGW2404FP(config)# snmp-rmon alarm config 1-3,6 interval 1000
```

snmp-rmon alarm owner

Description

The **snmp-rmon alarm owner** command is used to configure the owner of the Alarm Management entry. To return to the default configuration, please use **no snmp-rmon alarm owner** command.

Syntax

```
snmp-rmon alarm owner {index} [owner]
no snmp-rmon alarm owner {index}
```

Parameter

index — The index number of the entry, ranging from 1 to 12. You can only select one entry for each command.

owner — The owner of the entry, ranging from 1 to 16 characters. By default, it is monitor.

Command Mode

Global Configuration Mode

Example

Configure the owner of entry 1 as owner1:

```
LP-SGW2404FP(config)# snmp-rmon alarm owner 1 owner1
```

snmp-rmon alarm enable

Description

The **snmp-rmon alarm enable** command is used to enable SNMP-RMON Alarm Management entry. To disable the corresponding entry, please use **no snmp-rmon alarm enable** command.

Syntax

```
snmp-rmon alarm enable {index}
no snmp-rmon alarm enable {index}
```

Parameter

index — The index number of the entry desired to enable, ranging from 1 to 12, in the format of 1-3,5.

Command Mode

Global Configuration Mode

Example

Enable the Alarm Management entries 1,2,3,4 and 8:

```
LP-SGW2404FP(config)# snmp-rmon alarm enable 1-4,8
```

show snmp global-config

Description

The **show snmp global-config** command is used to display SNMP configuration globally.

Syntax

```
show snmp global-config
```

Command Mode

Any Configuration Mode

Example

Display SNMP configuration globally:

```
LP-SGW2404FP> show snmp global-config
```

show snmp view

Description

The **show snmp view** command is used to display the View table.

Syntax

```
show snmp view
```

Command Mode

Any Configuration Mode

Example

Display the View table:

```
LP-SGW2404FP> show snmp view
```

show snmp group

Description

The **show snmp group** command is used to display the Group table.

Syntax

```
show snmp group
```

Command Mode

Any Configuration Mode

Example

Display the Group table:

```
LP-SGW2404FP> show snmp group
```

show snmp user

Description

The **show snmp user** command is used to display the User table.

Syntax

```
show snmp user
```

Command Mode

Any Configuration Mode

Example

Display the User table:

```
LP-SGW2404FP> show snmp user
```

show snmp community

Description

The **show snmp community** command is used to display the Community table.

Syntax

```
show snmp community
```

Command Mode

Any Configuration Mode

Example

Display the Community table:

```
LP-SGW2404FP> show snmp community
```

show snmp destination-host

Description

The **show snmp destination-host** command is used to display the Notification table.

Syntax

```
show snmp destination-host
```

Command Mode

Any Configuration Mode

Example

Display the Notification table:

```
LP-SGW2404FP> show snmp destination-host
```

show snmp-rmon history

Description

The **show snmp-rmon history** command is used to display the configuration of the history sample entry.

Syntax

```
show snmp-rmon history [index]
```

Parameter

index — The index number of the entries selected to display the configuration, ranging from 1 to 12. You can only select one entry for each command. By default, the configuration of all entries is displayed.

Command Mode

Any Configuration Mode

Example

Display the configuration of all history sample entries:

```
LP-SGW2404FP> show snmp-rmon history
```

show snmp-rmon event

Description

The **show snmp-rmon event** command is used to display the configuration of SNMP-RMON Event.

Syntax

```
show snmp-rmon event [index]
```

Parameter

index — The index number of the entries selected to display the configuration, ranging from 1 to 12. You can only select one entry for each command. By default, the configuration of all entries is displayed.

Command Mode

Any Configuration Mode

Example

Display the Event configuration of entry 2:

```
LP-SGW2404FP> show snmp-rmon event 2
```

show snmp-rmon alarm

Description

The **show snmp-rmon alarm** command is used to display the configuration of the Alarm Management entry.

Syntax

```
show snmp-rmon alarm [index]
```

Parameter

index — The index number of the entries selected to display the configuration, ranging from 1 to 12. You can only select one entry for each command. By default, the configuration of all entries is displayed.

Command Mode

Any Configuration Mode

Example

Display the configuration of all Alarm Management entries:

```
LP-SGW2404FP> show snmp-rmon alarm
```

Chapter 29 LLDP Commands

LLDP function enables network devices to advertise their own device information periodically to neighbors on the same LAN. The information of the LLDP devices in the LAN can be stored by its neighbor in a standard MIB, so it is possible for the information to be accessed by a Network Management System (NMS) using SNMP.

lldp enable

Description

The **lldp enable** command is used to enable LLDP function. To return to the default configuration, please use **no lldp enable** command.

Syntax

```
lldp enable
no lldp enable
```

Command Mode

Global Configuration Mode

Example

Enable lldp function globally:

```
LP-SGW2404FP(config)# lldp enable
```

lldp hold-multiplier

Description

The **lldp hold-multiplier** command is used to configure the Hold Multiplier parameter. The aging time of the local information in the neighbor device is determined by the actual TTL value used in the sending LLDPDU. $TTL = \text{Hold Multiplier} * \text{Transmit Interval}$. To return to the default configuration, please use **no lldp hold-multiplier** command.

Syntax

```
lldp hold-multiplier multiplier
no lldp hold-multiplier
```

Parameter

multiplier — Configure the Hold Multiplier parameter. It ranges from 2 to 10. By default, it is 4.

Command Mode

Global Configuration Mode

Example

Specify Hold Multiplier as 5:

```
LP-SGW2404FP(config)# lldp hold-multiplier 5
```

Ildp timer

Description

The **ildp timer** command is used to configure the parameters about transmission. To return to the default configuration, please use **no ildp timer** command.

Syntax

```

ildp timer tx-interval tx-interval
ildp timer tx-delay tx-delay
ildp timer reinit-delay reinit-delay
ildp timer notify-interval notify-interval
ildp timer fast-count fast-count
no ildp timer tx-interval
no ildp timer tx-delay
no ildp timer reinit-delay
no ildp timer notify-interval
no ildp timer fast-count
  
```

Parameter

tx-interval — Configure the interval for the local device to transmit LLDPDU to its neighbors. By default, it is 30 seconds.

tx-delay — Configure a value from 1 to 8192 in seconds to specify the time for the local device to transmit LLDPDU to its neighbors after changes occur so as to prevent LLDPDU being sent frequently. By default, it is 2 seconds.

reinit-delay — This parameter indicates the amount of delay from when LLDP status becomes "disable" until re-initialization will be attempted. The default value is 3.

notify-interval — Specify the interval of Trap message which will be sent from local device to network management system. By default, it is 5 seconds.

fast-count — When the port's LLDP status transforms from Disable (or Rx_Only) to Tx&Rx (or Tx_Only), the fast start mechanism will be enabled, that is, the transmit interval will be shorten to a second, and several LLDPDUs will be sent out (the number of LLDPDUs equals this parameter). The default value is 3.

Command Mode

Global Configuration Mode

Example

Specify the Transmit Interval of LLDPDU as 45 seconds and Trap message to NMS as 120 seconds:

```

LP-SGW2404FP(config)# ildp timer tx-interval 45
LP-SGW2404FP(config)# ildp timer notify-interval 120
  
```

Ildp med-fast-count

Description

The **ildp med-fast-count** command is used to configure the number of the LLDP-MED frames that will be sent out. When LLDP-MED fast start mechanism is activated, multiple LLDP-MED frames will be transmitted based on this parameter. The default value is 4. To return to the default configuration, please use **no ildp med-fast-count** command.

Syntax

```
ildp med-fast-count count
no ildp med-fast-count
```

Parameter

count — Configure the Fast Start Count parameter. It ranges from 1 to 10. By default, it is 4.

Command Mode

Global Configuration Mode

Example

Specify Fast Start Count as 5:

```
LP-SGW2404FP(config)# ildp med-fast-count 5
```

Ildp admin-status

Description

The **ildp admin-status** command is used to configure the port's LLDP operating mode. To return to the default configuration, please use **no ildp admin-status** command.

Syntax

```
ildp admin-status {disable | tx | rx | txrx }
no ildp admin-status
```

Parameter

disable — Neither transmit nor receive LLDP frames.

tx — Only transmit LLDP frames.

rx — Only receive LLDP frames without sending.

txrx — Transmit and receive LLDP frames. By default, the LLDP operating mode of all ports is "txrx".

Command Mode

Interface Configuration Mode (interface ethernet / interface range ethernet)

Example

Configure the LLDP operating mode as "tx" for port 6:

```
LP-SGW2404FP(config)# interface ethernet 6
LP-SGW2404FP(config-if)# lldp admin-status tx
```

Ildp snmp-trap

Description

The **lldp snmp-trap** command is used to enable the ports' SNMP notification. If enabled, the port will notify the trap event to network management system. To disable the ports' SNMP notification, please use **no lldp snmp-trap** command.

Syntax

```
lldp snmp-trap
no lldp snmp-trap
```

Command Mode

Interface Configuration Mode (interface ethernet / interface range ethernet)

Example

Enable the ports' SNMP notification for port8:

```
LP-SGW2404FP(config)# interface ethernet 8
LP-SGW2404FP(config-if)# lldp snmp-trap
```

Ildp tlv-select

Description

The **lldp tlv-select** command is used to configure TLVs to be included in outgoing LLDPDU. To exclude TLVs, please use **no lldp tlv-select** command. By default, All TLVs are included in outgoing LLDPDU.

Syntax

```
lldp tlv-select [port-description] [system-capability] [system-description]
[system-name] [management-address] [port-vlan-id] [protocol-vlan-id] [vlan-
name] [link-aggregation] [mac-phy] [max-frame-size] [power] [all]
no lldp tlv-select [port-description] [system-capability] [system-description]
[system-name] [management-address] [port-vlan-id] [protocol-vlan-id] [vlan-
name] [link-aggregation] [mac-phy] [max-frame-size] [power] [all]
```

Command Mode

Interface Configuration Mode (interface ethernet / interface range ethernet)

Example

Exclude "management-address" and "port-vlan-id" TLVs in LLDPDU outgoing from port 8:

```
LP-SGW2404FP(config)# interface ethernet 8
LP-SGW2404FP(config-if)# no lldp tlv-select management-address port-
vlan-id
```

Ildp med-status

Description

The **ildp med-status** command is used to enable the port's LLDP-MED status. Enable the port's LLDP-MED status, and the port's Admin Status will be changed to Tx&Rx. To disable LLDP-MED status, please use **no ildp med-status** command.

Syntax

```
ildp med-status {enable }
no ildp med-status
```

Parameter

enable — Enable the port's LLDP-MED status, and the port's Admin Status will be changed to Tx&Rx.

Command Mode

Interface Configuration Mode (interface ethernet / interface range ethernet)

Example

Enable the LLDP-MED status for port 6:

```
LP-SGW2404FP(config)# interface ethernet 6
LP-SGW2404FP(config-if)# ildp med-status enable
```

Ildp med-tlv-select

Description

The **ildp med-tlv-select** command is used to configure TLVs to be included in outgoing LLDPDU. To exclude TLVs, please use **no ildp med-tlv-select** command. By default, All TLVs are included in outgoing LLDPDU.

Syntax

```
ildp med-tlv-select [inventory-management] [location] [network-policy]
[power-management] [all]
no ildp med-tlv-select [inventory-management] [location] [network-policy]
[power-management] [all]
```

Command Mode

Interface Configuration Mode (interface ethernet / interface range ethernet)

Example

Exclude “network policy” and “inventory” TLVs in LLDPDU outgoing from port 8:

```
LP-SGW2404FP(config)# interface ethernet 8
LP-SGW2404FP(config-if)# no ildp tlv-select network-policy inventory-
management
```


Ildp med-location

Description

The `ldp med-location` command is used to configure the Location Identification TLV's content in outgoing LLDPDU of the port.

Syntax

ldp med-location {**emergency-number** *identifier*} **civic-address** [**language** *language* | **province-state** *province-state* | **county** *county* | **city** *city* | **street** *street* | **house-number** *house-number* | **name** *name* | **postal-zipcode** *postal-zipcode* | **room-number** *room-number* | **post-office-box** *post-office-box* | **additional** *additional* | **country-code** *country-code* | **what** *what*}]

Parameter

emergency-number — Emergency number is Emergency Call Service ELIN identifier, which is used during emergency call setup to a traditional CAMA or ISDN trunk-based PSAP.

civic-address — The Civic address is defined to reuse the relevant sub-fields of the DHCP option for Civic Address based Location Configuration Information as specified by IETF.

Command Mode

Interface Configuration Mode (`interface ethernet / interface range ethernet`)

Example

Configure the civic address in the Location Identification TLV's content in outgoing LLDPDU of port 6. Configure the language as English and city as London:

```
LP-SGW2404FP(config)# interface ethernet 6
LP-SGW2404FP(config-if)# ldp med-location civic-address language
English city London
```

show lldp global

Description

The `show lldp global` command is used to display the global configuration of LLDP.

Syntax

show lldp global

Command Mode

Any Configuration Mode

Example

Display the global configuration of LLDP:

```
LP-SGW2404FP> show lldp global
```

show lldp interface

Description

The **show lldp interface** command is used to display LLDP configuration of the certain port.

Syntax

```
show lldp interface [ethernet port]
```

Parameter

port — The port selected to display the configuration of LLDP, ranging from 1 to 24.

Command Mode

Any Configuration Mode

Example

Display the LLDP configuration of port 8:

```
LP-SGW2404FP> show lldp interface ethernet 8
```

show lldp local-information

Description

The **show lldp local-information** command is used to display the LLDP information of the certain port.

Syntax

```
show lldp local-information [port]
```

Parameter

port — The port selected to display the information of LLDP, ranging from 1 to 24.

Command Mode

Any Configuration Mode

Example

Display the LLDP information of port 8:

```
LP-SGW2404FP> show lldp local-information 8
```

show lldp neighbor-information

Description

The **show lldp neighbor-information** command is used to display the neighbor information of the certain port.

Syntax

```
show lldp neighbor-information [port]
```

Parameter

port — The port selected to display the neighbor information, ranging from 1 to 24.

Command Mode

Any Configuration Mode

Example

Display the neighbor information of port 8:

```
LP-SGW2404FP> show lldp neighbor-information 8
```

show lldp statistics

Description

The **show lldp statistics** command is used to display the LLDP statistic information between the local device and neighbor device of the certain port.

Syntax

```
show lldp statistics [port]
```

Parameter

port — The port selected to display the neighbor information, ranging from 1 to 24.

Command Mode

Any Configuration Mode

Example

Display the LLDP statistic information of port 8:

```
LP-SGW2404FP> show lldp statistics 8
```

show lldp med fast-count

Description

The **show lldp med fast-count** command is used to display LLDP-MED fast start repeat count number.

Syntax

```
show lldp med fast-count
```

Command Mode

Any Configuration Mode

Example

Display the LLDP-MED fast start repeat count number:

```
LP-SGW2404FP> show lldp med fast-count
```

show lldp med interface

Description

The **show lldp med interface** command is used to display LLDP-MED

configuration of the certain port.

Syntax

show lldp med interface [*ethernet port*]

Parameter

port — The port selected to display the configuration of LLDP, ranging from 1 to 24.

Command Mode

Any Configuration Mode

Example

Display the LLDP-MED configuration of port 8:

```
LP-SGW2404FP> show lldp med interface ethernet 8
```

show lldp med local-information

Description

The **show lldp med local-information** command is used to display the LLDP-MED information of the certain port.

Syntax

show lldp med local-information [*port*]

Parameter

port — The port selected to display the information of LLDP, ranging from 1 to 24.

Command Mode

Any Configuration Mode

Example

Display the LLDP-MED information of port 8:

```
LP-SGW2404FP> show lldp med local-information 8
```

show lldp med neighbor-information

Description

The **show lldp med neighbor-information** command is used to display the neighbor's LLDP-MED information of the certain port.

Syntax

show lldp med neighbor-information [*port*]

Parameter

port — The port selected to display the neighbor information, ranging from 1 to 24.

Command Mode

Any Configuration Mode

Example

Display the LLDP-MED information of port 8's neighbor:

```
LP-SGW2404FP> show lldp med neighbor-information 8
```

Chapter 30 Cluster Commands

Cluster Management function enables a network administrator to manage the scattered devices in the network via a management device. After a commander switch is configured, management and maintenance operations intended for the member devices in a cluster is implemented by the commander device.

cluster ndp

Description

The **cluster ndp** command is used to configure NDP globally. To return to the default configuration, please use **no cluster ndp** command. NDP (Neighbor Discovery Protocol) is used to discover the information of the directly connected neighbor devices to support cluster establishing. An NDP-enabled device sends NDP packets regularly to neighbor devices as well as receives NDP packets from neighbor devices. An NDP packet carries the aging time, which indicates the period of the receiving devices to keep the NDP packet.

Syntax

```
cluster ndp [status { disable | enable }] [aging-timer aging-timer] [hello-timer hello-timer]
```

```
no cluster ndp
```

Parameter

status — Enable/ Disable NDP function globally. By default, it is enabled.

aging-timer — Aging Time, which is the period for the neighbor switch to keep the NDP packets from this switch. Aging Time ranges from 5 to 255 in seconds. By default, it is 180.

hello-timer — Hello Time, which is the interval to send NDP packets. Hello Time ranges from 5 to 254 in seconds. By default, it is 60.

Command Mode

Global Configuration Mode

Example

Enable NDP function globally, and configure Aging Time as 120 seconds, Hello Time as 50 seconds:

```
LP-SGW2404FP(config)# cluster ndp status enable aging-timer 120 hello-timer 50
```

cluster ntdp

Description

The **cluster ntdp** command is used to configure NTDP globally. To return to the default configuration, please use **no cluster ntdp** command. NTDP (Neighbor Topology Discovery Protocol) is used to collect the NDP information and neighboring connection information of each device in a specific network

range. It provides the commander switch with the information of devices which can join the cluster and collects topology information of devices within the specified hops.

Syntax

cluster ntdp [**status** { *disable* | *enable* }] [**interval** *interval*] [**hop** *hop*] [**hop-delay** *hop-delay*] [**port-delay** *port-delay*]

no cluster ntdp

Parameter

status — Enable/ Disable NTDP function globally. By default, it is enabled.

interval — NTDP Interval Time, which is the interval to collect topology information. NTDP Interval Time ranges from 1 to 60 in minutes. By default, it is 1.

hop — NTDP Hops, which is the hop count the switch topology collects. NTDP Hops ranges from 1 to 16. By default, it is 3.

hop-delay — NTDP Hop Delay, which is the time between the switch receiving NTDP request packets and the switch forwarding NTDP request packets for the first time. NTDP Hop Delay ranges from 1 to 1000 in milliseconds. By default, it is 200.

port-delay — NTDP Port Delay, which is the time between the port forwarding NTDP request packets and its adjacent port forwarding NTDP request packets over. NTDP Port Delay ranges from 1 to 100 in milliseconds. By default, it is 20.

Command Mode

Global Configuration Mode

Example

Enable NTDP function globally, and specify NTDP Interval Time as 20 minutes, NTDP Hops as 5, NTDP Hop Delay as 300 milliseconds, and NTDP Port Delay as 50 milliseconds:

```
LP-SGW2404FP(config)# cluster ntdp status enable interval 20 hop 5
hop-delay 300 port-delay 50
```

cluster explore

Description

The **cluster explore** command is used to enable the topology information collecting function manually.

Syntax

cluster explore

Command Mode

Global Configuration Mode

Example

Enable the topology information collecting function manually:

```
LP-SGW2404FP(config)# cluster explore
```

cluster

Description

The **cluster** command is used to configure Cluster Port. To disable the cluster function for the port, please use **no cluster** command.

Syntax

```
cluster [ndp { disable | enable }] [ntdp { disable | enable }]
no cluster
```

Parameter

ndp — Enable/ Disable NDP function for the port. By default, it is enabled.

ntdp — Enable/ Disable NTDP function for the port. By default, it is enabled.

Command Mode

Interface Configuration Mode (interface ethernet / interface range ethernet)

Example

Enable NDP and NTDP function for port 5:

```
LP-SGW2404FP(config)# interface ethernet 5
LP-SGW2404FP(config-if)# cluster ndp enable ntdp enable
```

cluster manage role-change

Description

The **cluster manage role-change** command is used to change the role of the current switch. According to their status and functions, switches in the cluster play different roles. You can specify the role the switch plays appropriate to your needs. A commander switch can recognize and manage the devices in the cluster; a member switch is managed by the commander; a candidate switch does not belong to any cluster through it can be added to a cluster; an individual switch is with the cluster feature disabled.

Syntax

```
cluster manage role-change { candidate | individual }
```

Parameter

candidate | individual — The role you want the switch to play, with candidate and individual options. The role of the switch you can change to is related with the current role. The conversion between Candidate Switch and Individual Switch is: Candidate Switch ⇔ Individual Switch.

Command Mode

Global Configuration Mode

Example

Change the role of the current switch to Candidate Switch:

```
LP-SGW2404FP(config)# cluster manage role-change candidate
```

show cluster ndp global

Description

The **show cluster ndp global** command is used to display the global configuration of NDP.

Syntax

```
show cluster ndp global
```

Command Mode

Any Configuration Mode

Example

Display the global configuration of NDP:

```
LP-SGW2404FP> show cluster ndp global
```

show cluster ndp port-status

Description

The **show cluster ndp port-status** command is used to display NDP configuration of the certain port.

Syntax

```
show cluster ndp port-status [port]
```

Parameter

port — The port selected to display the configuration of NDP. By default, the configuration of all ports is displayed.

Command Mode

Any Configuration Mode

Example

Display the NDP configuration of port 2:

```
LP-SGW2404FP> show cluster ndp port-status 2
```

show cluster neighbor

Description

The **show cluster neighbor** command is used to display the cluster neighbor information.

Syntax

```
show cluster neighbor
```

Command Mode

Any Configuration Mode

Example

Display the cluster neighbor information:

```
LP-SGW2404FP> show cluster neighbor
```

show cluster ntdp global

Description

The **show cluster ntdp global** command is used to display the global configuration of NTDP.

Syntax

```
show cluster ntdp global
```

Command Mode

Any Configuration Mode

Example

Display the global configuration of NTDP:

```
LP-SGW2404FP> show cluster ntdp global
```

show cluster ntdp port-status

Description

The **show cluster ntdp port-status** command is used to display NTDP configuration of the certain port.

Syntax

```
show cluster ntdp port-status [port]
```

Parameter

port — The port selected to display the configuration of NTDP. By default, the configuration of all ports is displayed.

Command Mode

Any Configuration Mode

Example

Display the NTDP configuration of port 2:

```
LP-SGW2404FP> show cluster ntdp port-status 2
```

show cluster ntdp device

Description

The **show cluster ntdp device** command is used to display the device table of NTDP.

Syntax

```
show cluster ntdp device
```

Command Mode

Any Configuration Mode

Example

Display the device table of NTDP:

```
LP-SGW2404FP> show cluster ntdp device
```

show cluster manage role

Description

The **show cluster manage role** command is used to display the role of the current switch.

Syntax

```
show cluster manage role
```

Command Mode

Any Configuration Mode

Example

Display the role of the current switch:

```
LP-SGW2404FP> show cluster manage role
```