

# 123 Manual for LP-PCI/2SERIAL PC board Installation with Windows 7.

LPPCI2SERIAL\_M123\_ENB01W



## 123 Manual for LP-PCI/2SERIAL PC board Installation with Windows 7.

Following these instructions will install the LP-PCI/2SERIAL, with system Windows 7.

- 1 First, please download the corresponding driver set from [www.lanpro.com](http://www.lanpro.com) and de-compress them accordingly:  
<http://www.lanpro.com/products/active/products/download.asp?id=822>
- 2 We now remind you the common precautions you should take when installing hardware inside a personal computer: (Anti-static protection, power disconnection, etc.), then proceed to open your PC and insert the PC Board in any available slot, as shown in figure 1.



Figure 1

- 3 Proceed now to turn your equipment on, it will indicate you if it found a new device that could not be installed, then proceed to select: Start and Control Panel, as shown in figure 2.

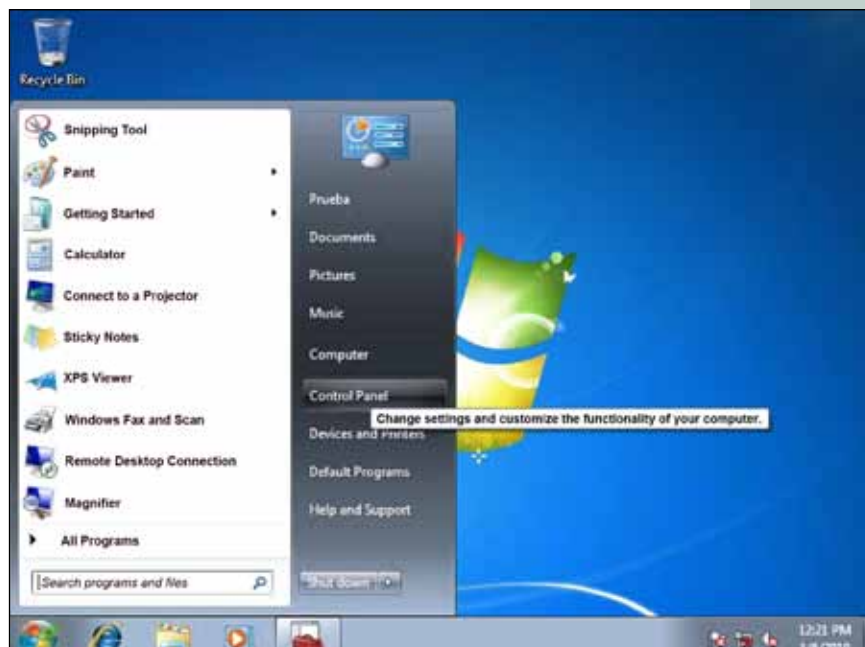


Figure 2

- 4 Proceed to enter in: System and Security, System, then open: Device Manager as shown in figure 3.

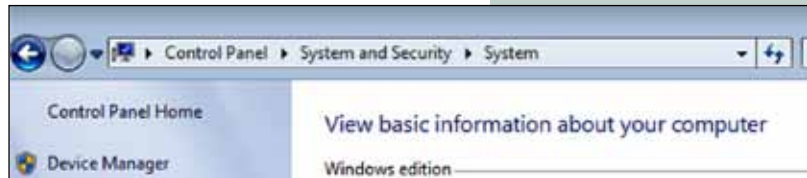


Figure 3

- 5 Proceed to look for the corresponding device list as shown in figure 4.

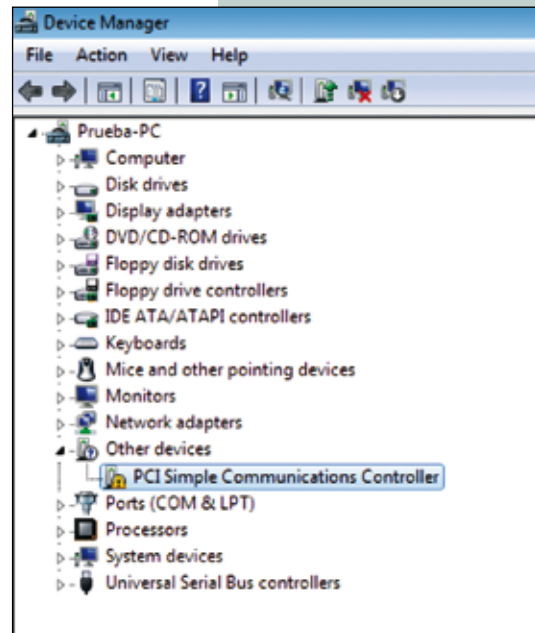


Figure 4

- 6 By clicking the right button of the mouse and then selecting with the left button: **Properties**, then: **Update Driver**, as shown in figure 5.

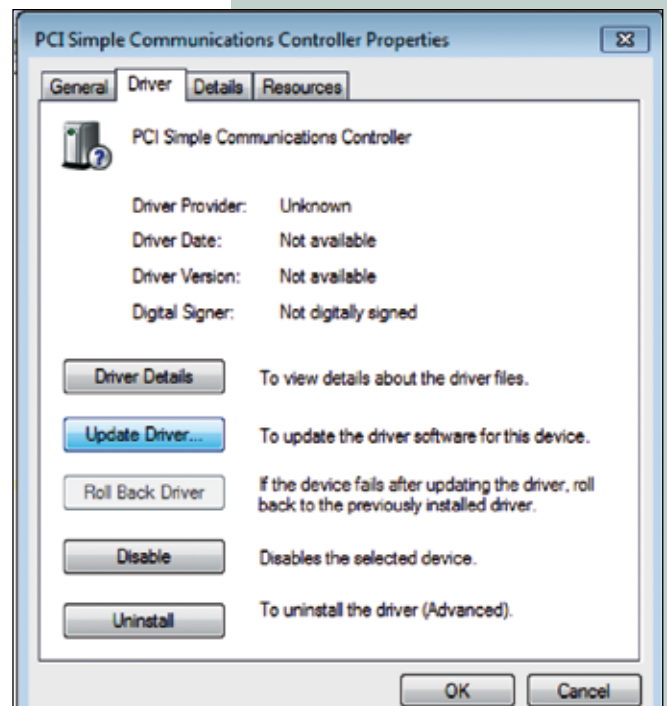


Figure 5

- 7 A new window will pop-up asking for how to search the driver, left-click on: **Browse my computer for driver software**, as shown in figure 6.



Figure 6

- 8 A new window will pop-up in which you should select option: **Browse**, as shown in figure 7.



Figure 7

- 9 Locate the corresponding folder, as shown in figure 8, please remember that this depends on the file location where you de-compressed and saved the files, then select: **OK**.

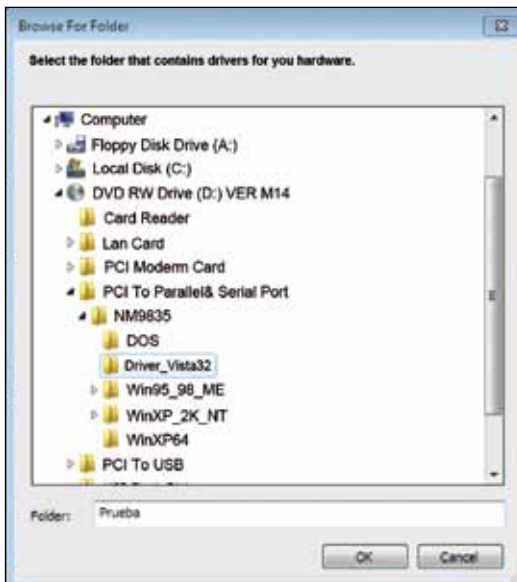


Figure 8

- 10 Now select: **Next**. As shown in figure 9.



Figure 9

- 11 Watch your PC installing the corresponding driver as shown in figure 10.

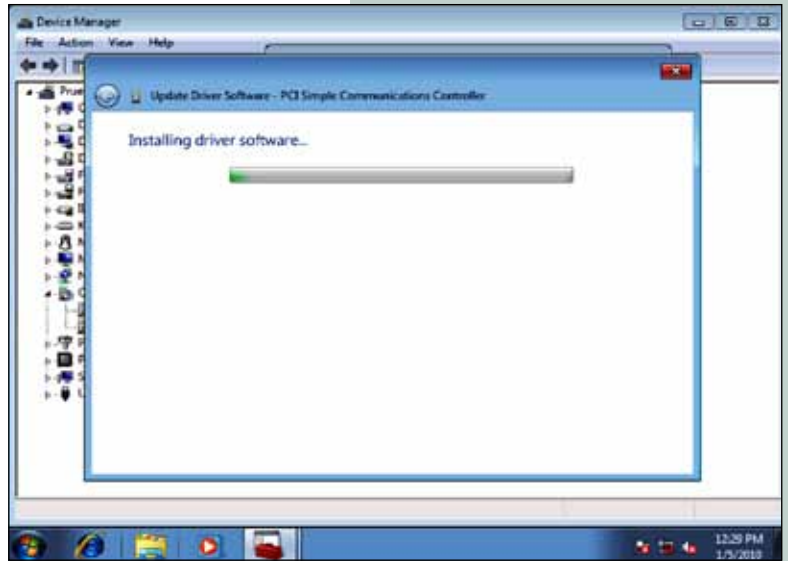


Figure 10

- 12 Once the installation has finished, please select: **Close** , as shown in figure 11.



Figure 11

- 13 Now you can verify that the device was properly installed as shown in figure 12, finally close the Device Administrator.

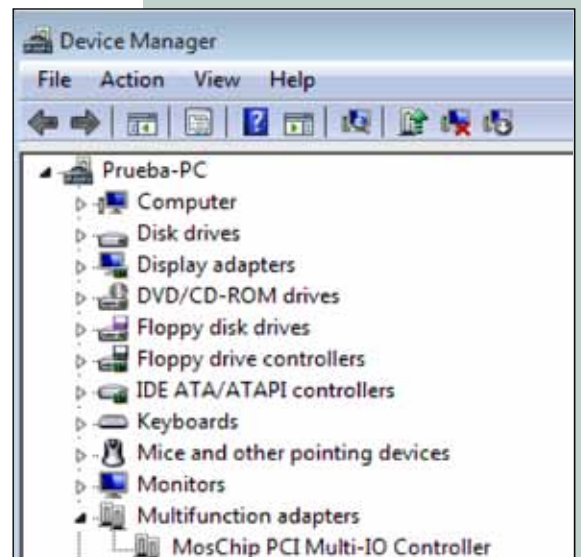


Figure 12