



LANPRO



Cabling & Work Area



LanPro is a leading supplier of seamlessly integrated Internetworking Products covering multiple fields: Wireless, Active, Cabling, Work Area and Metalworking.

In the Wireless field, LanPro can supply Access Points (AP's) from performance levels, such as those needed in an enterprise, to systems providing service to small villages or campuses along with SOHO and home solutions. LanPro can also supply an extensive line of antennas for area coverage as well as RF devices and accessories or actives that provide benefits like bandwidth management via QoS and user authentication.

LanPro supplies a whole line of reliable and proven wireless products for all of your PtP and PtMP solutions. It has never been easier to provide internet service to those out-of-reach premises and without the delays and development costs of a wired infrastructure. LanPro's wireless solutions allow quick, reliable and low cost access to high-speed voice, video and data services. Internet access can be extended to schools, business parks, apartment complexes, and rural locations in a matter of days, not months.

In the Actives field, LanPro has an extensive world of products and solutions for your SOHO, Enterprise Internetworking, and Security Surveillance needs. LanPro provides 10Mbps to 10 Gbps Switching devices, Network Supervision Administration & Bandwidth Control with tariff application to WAN load balancers, and the new generation of digital cameras with native IP Protocol and robotized domes. Finally, LanPro supplies a line of accessories like PoE support equipment, enclosures, NIC cards, media converters, communication cards, and much more.

With its large component supply, Metalworking includes our extensive line of Cabinets, Racks and accessories - shelves, organizers, hardware kits, hooks - for proper cabling management. These products allow the integrator to build a compact, reliable and efficient installation.

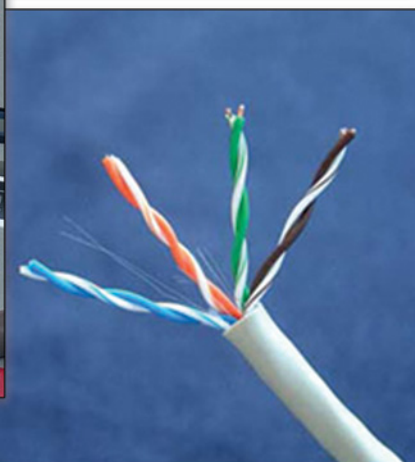
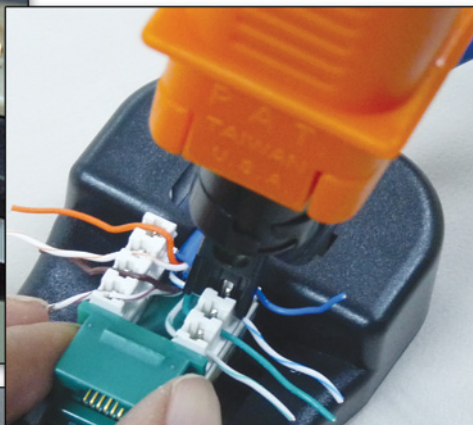
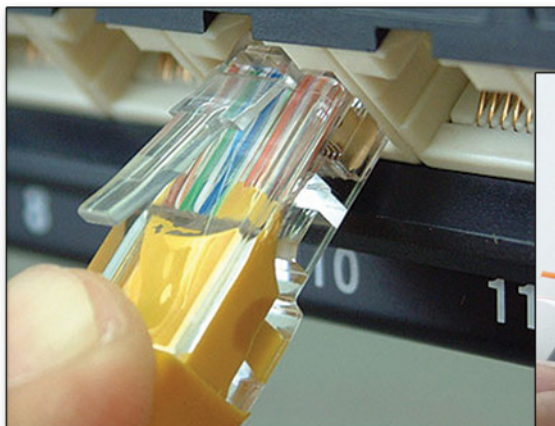
LanPro's cabinets and racks are produced as OEM for important and well known leading brands in the US. Products arrive in a flat and compact form for improving shipping while lowering costs and damage to the units. LanPro is capable of quickly developing custom made Metalwork solutions for our customers in a very short time.


In the Work Area field, LanPro's broad line of matching products is where you, the integrator, or the installer will find every component and accessory for assembling your LAN and/or WLAN data structures. From Faceplates, Tie-Wraps, Boxes and Raceways, we include the proper Tools and Measurement devices that will help you deliver a high quality networking system.

In the Cabling field, LanPro develops and supplies a comprehensive range of communicative infrastructure products - patch panels, patch cords, couplers, jack modules, cables, plugs, outdoor products- that offer superior value-added technology in CAT 5e/6 and GigaSpeed Fiber Optic solutions. Cat7 & 10GB technology is a part of our incoming line of products; they offer a broader range of solutions to our customers.

Combined with superior customer service, LanPro's portfolio offers a full spectrum of industry-leading products and technologies at excellent prices, thereby making our company a single-source system provider that meets the wide range of telecom infrastructure needs for local and global customers.







DUZX.E329019
Communications Cable

Communications Cable

LANPRO INC
USA


E329019

Communications cable, Types CMH, CMX, CM, CMG, CMR, rated 60 or 75 C.
Types CMX, CM, CMR.

Copyright © 2009 Underwriters Laboratories Inc.®

The appearance of a company's name or product in this database does not in itself assure that products manufactured under UL's Follow-Up Service. Only those products bearing the UL Mark should be considered covered under UL's Follow-Up Service. Always look for the Mark on the product.

UL permits the reproduction of the material contained in the Online Certification Directory subject to the following conditions: 1. The Guide Information, Designs and/or Listings (files) must be presented in their entirety and in a non-misleading manner, without any manipulation of the data (or drawings). 2. The statement "Reprinted from the Online Certifications Directory with permission from Underwriters Laboratories Inc." must appear adjacent to the extracted material. In addition, the reprinted material must include a copyright notice in the following format: "Copyright © 2009 Underwriters Laboratories Inc.®"



DUZX7.E329019
Communications Cable Certified for Canada

Communications Cable Certified for Canada

LANPRO INC
USA


E329019

Communications cable, Types CMH, CMX, CM, CMG, CMR, rated 60 or 75 C.
Types CMX, CM, CMR.

Copyright © 2009 Underwriters Laboratories Inc.®

The appearance of a company's name or product in this database does not in itself assure that products so identified have been service. Only those products bearing the UL Mark should be considered to be Listed and e. Always look for the Mark on the product.

Material contained in the Online Certification Directory subject to the following conditions: 1. or Listings (files) must be presented in their entirety and in a non-misleading manner, without any manipulation of the data (or drawings). 2. The statement "Reprinted from the Online Certifications Directory with permission from Underwriters Laboratories Inc." must appear adjacent to the extracted material. In addition, the reprinted material must include a copyright notice in the following format: "Copyright © 2009 Underwriters Laboratories Inc.®"



DUXRE.E329018
Communications Circuit Accessories

Communications Circuit Accessories

LANPRO INC
USA

E329018

In-line coupler, Model LP-JE315xx.

Keystone jacks, Models LP-KJ8C6USWHI, LP-KJ8CEUSBLN.

Patch panel, Model LP-PxxTKAAC6C, where XX=12, 16, 24, 32, 48, 72, 96.

Patch panel, 45 degree angle type, Model LP-PxxAK11CECBK, where XX=12, 24, 48, 72, 96, M12, black.

Surface boxes, Models LP-301Axx, LP-302Axx.

Wall plate and module, Model LP-317AVxxx, where VX=V1, V2, V3, V4, V6.

Copyright © 2009 Underwriters Laboratories Inc.®

The appearance of a company's name or product in this database does not in itself assure that products so identified have been service. Only those products bearing the UL Mark should be considered to be Listed and e. Always look for the Mark on the product.


Material contained in the Online Certification Directory subject to the following conditions: 1. or Listings (files) must be presented in their entirety and in a non-misleading manner, without any manipulation of the data (or drawings). 2. The statement "Reprinted from the Online Certifications Directory with permission from Underwriters Laboratories Inc." must appear adjacent to the extracted material. In addition, the reprinted material must include a copyright notice in the following format: "Copyright © 2009 Underwriters Laboratories Inc.®"



Compliance Statement

No. 2012-069

We help ideas meet the real world 



DUXR7.E329018
Communications Circuit Accessories Certified for Canada

Communications Circuit Accessories Certified for Canada

LANPRO INC
USA

E329018

In-line coupler, Model LP-JE315xx.

Keystone jacks, Models LP-KJ8C6USWHI, LP-KJ8CEUSBLN.

Patch panel, Model LP-PxxTKAAC6C, where XX=12, 16, 24, 32, 48, 72, 96.

Patch panel, 45 degree angle type, Model LP-PxxAK11CECBK, where XX=12, 24, 48, 72, 96, M12, black.

Surface boxes, Models LP-301Axx, LP-302Axx.

Wall plate and module, Model LP-317AVxxx, where VX=V1, V2, V3, V4, V6.

Copyright © 2009 Underwriters Laboratories Inc.®

The appearance of a company's name or product in this database does not in itself assure that products so identified have been service. Only those products bearing the UL Mark should be considered to be Listed and e. Always look for the Mark on the product.

Material contained in the Online Certification Directory subject to the following conditions: 1. or Listings (files) must be presented in their entirety and in a non-misleading manner, without any manipulation of the data (or drawings). 2. The statement "Reprinted from the Online Certifications Directory with permission from Underwriters Laboratories Inc." must appear adjacent to the extracted material. In addition, the reprinted material must include a copyright notice in the following format: "Copyright © 2009 Underwriters Laboratories Inc.®"

Data communication cable, Category 6a

Company
LanPro Inc
USA

Product description
Screened cable (UFTP) characterised up to 500 MHz
Horizontal floor wiring cable, 100 Ω
4 individually foil screened twisted pairs
Flame retardant, halogen free

Product identification
UFTP CAT6A

Generic cabling and cabling components standards - Category 6a cable requirements

- ISO/IEC 11801:2011 (Ed. 2.2)
- IEC 61156-5:2009 (Ed. 2.0)
- EN 50173-1:2011
- EN 50173-2:2007 including amendment A1:2010
- prEN 50288-10:2010
- ANSI/TIA-568-C.2:2009

Standards for flammability, halogen acidity, and smoke performance

- IEC 60332-1-1:2004
- IEC 60754-1:2004
- IEC 61034

Technical report
DELTA-T20236, DANAK-19/11905

EC Cabling product ID
5503

Certificate valid until
2 March 2013

This product has been tested by EC Cabling Group of DELTA and complies with the requirements of the above specified standards and "Terms and conditions for use of the EC VERIFIED marking on generic cabling products", DQP231008. The product takes part in a maintenance of certification schedule, which implies that EC Cabling performs a quality audit of the manufacturer's production and QA sites. The maintenance testing of the product is performed on a sample basis.

Hersholm, 2 March 2012



Erik Bach
Test Manager


Claude Videt
Project Manager

DELTA
Verifichedvej 4
2070 Hersholm
Denmark
Tel: +45 72 19 40 00
Fax: +45 72 19 40 01
www.madebydelta.com/cable



TEST Reg. no. 19



DUXR2.E329018
Communications-circuit Accessories - Component

Communications-circuit Accessories - Component

LANPRO INC
USA

E329018

Patch panels, Model(s) LP-P7CE-AAB8-USX, LP-P7CA-AAB8-USX

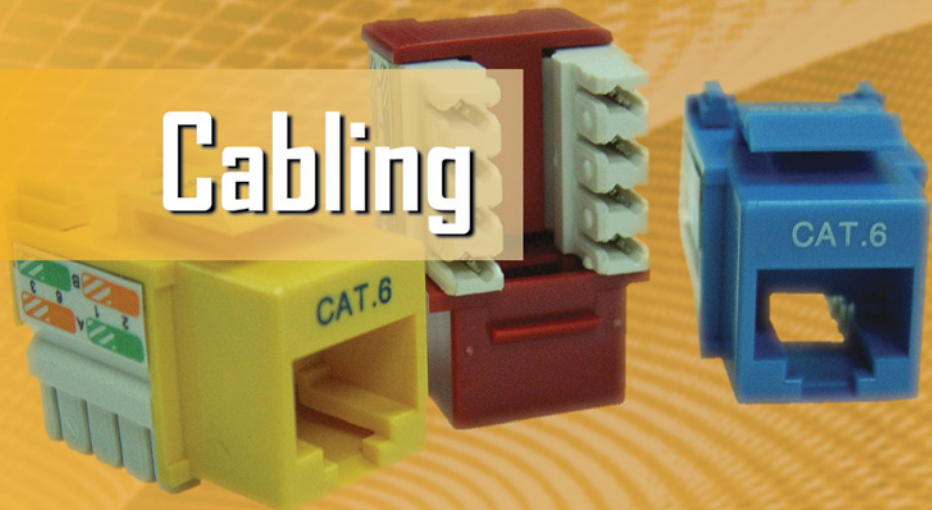
Marking: Company name and model designation.

Copyright © 2011 Underwriters Laboratories Inc.®

The appearance of a company's name or product in this database does not in itself assure that products so identified have been service. Only those products bearing the UL Mark should be considered to be Listed and e. Always look for the Mark on the product.

UL permits the reproduction of the material contained in the Online Certification Directory subject to the following conditions: 1. The Guide Information, Designs and/or Listings (files) must be presented in their entirety and in a non-misleading manner, without any manipulation of the data (or drawings). 2. The statement "Reprinted from the Online Certifications Directory with permission from Underwriters Laboratories Inc." must appear adjacent to the extracted material. In addition, the reprinted material must include a copyright notice in the following format: "Copyright © 2011 Underwriters Laboratories Inc.®"

Cabling



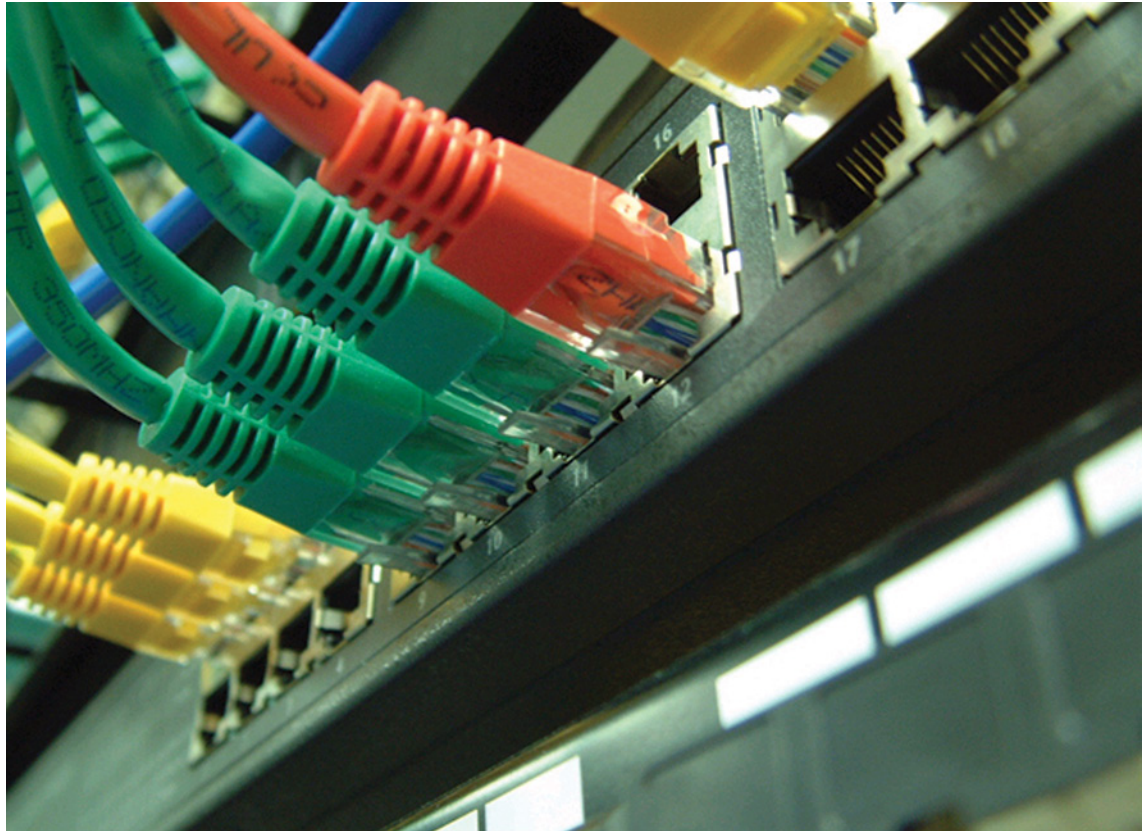


LanPro has long offered superior value-added technology in CAT 5e, CAT 6 and GigaSpeed Fiber Optic solutions and is in route to add CAT 7 & 10GB technology for our products line; in doing so, we will be offering a broader range of solutions to our clients.

An ample variety of patch panels in CAT 5, CAT 5e and CAT 6, with 45 and 90 degrees of cable entry angle will let the system integrator assemble neat and durable cable bundles. Modular Jacks in CAT 5e and CAT 6 standards will enable an improved connection quality and successful certification process. High quality materials and an ample variety of colors and lengths facilitate the process of routing and identifying cables in a bundle. Excellent Network cables in CAT 5e and CAT 6 standards grant the user the selection possibility, which depends on the installation's certification demands. Inline Couplers, Boots, and Modular Plugs made to LanPro's stringent specifications complete the products needed for a sound installation.

Complementing our cabling technologies, LanPro supplies an ample line of Cable Management and Work Area products that allow the integrator to build a compact, reliable and efficient installation. We supply superior performance standard products and are eager to work with you on custom needs for OEM/ODM projects. We have the capability to produce custom colors and markings on our products under OEM contracts.

Whatever your requirements may be, LanPro will always supply affordable, reliable and friendly solutions with personalized customer service. LanPro provides quality without compromise, longer life and top notch reliability.



Copper Solutions

Patch Panel CAT 6..... 8

Patch Panel CAT 5e..... 9

Modular Jacks CAT 6..... 10

Modular Jacks CAT 5e..... 11

High Density Patch Cord CAT 6..... 12

High Density Patch Cord CAT 5e..... 14

Network CAT 6..... 16

Network CAT 5e..... 18

NetworkCables(CAT 6A Outdoor).....20

NetworkCables(CAT 5E Outdoor).....22

Network Cables (Bi-Metallic, CAT 5e)..... 24

Inline Coupler (CAT 6, CAT 5e and CAT 3)..... 26

Boots..... 26

Modular Plugs..... 27

Modular Jacks CAT 3 and Telephony.....28

110 Modular Block..... 29

Cabling Management

Accessories (wire and cable bundle ties and shrink tubing)..... 30

iMC Modular System

iMC 8000 Series..... 33

LanPro Performax® CAT 6A

Short form Catalog on CAT 6A Products..... 36

New Product.....55

PATCH PANEL CAT 6

Copper Solutions

CAT 6 - 7000 and 8000 Series

The LanPro CAT 6 patch panels are used on high speed LAN Gigabit transmission systems, with a proven bandwidth in excess of 300 MHz. These units are developed with proprietary PCB (printed circuit board) and improved component geometries, resulting in a better performance, surpassing the TIA/EIA specifications.

This new design allows the use of both, Krone and 110D punching tools, and has colored 568-A and 568-B codes both on the top of the new version 110D for easy installation. We offer the traditional 90 degrees version (with standard backbar) as well as the improved 45 degrees one. The 45 degree angle entry is a very desirable feature, because there is less stress for both, the jack panel and the connecting cords. The bend radius is improved and this feature naturally protects the connection point from being disturbed or damaged. The 45 degrees version is only available on 8000 series.

The LanPro CAT 6 patch panels are engineered to last for many years.



Features

- ETL verified to TIA/EIA 568-B CAT 6
- UL and CSA approved.
- Superior performance to traditional designs. Both, 90 degree and improved 45 degree available.
- 568-A and 568-B compatible.
- Rugged construction.
- Cable management clips at the rear of the unit.
- Backwards compatible with CAT 5e systems.
- Black durable and elegant finish.
- High performance copper alloy contacts, 50 microinches of gold plating.
- 10/100 and 1000-base-T ready. (Gigaspeed ready)
- Outstanding price/performance ratio.
- Available in 12, 16, 24, 48 and 72 and 96 ports.
- Fully compatible with 19" rack mount standards.

How to order

■ **LP-PSC6AABCCX**

P

P: Patch Panel Rack Mount

SC6

S: 7= 7000 Serie

8= 8000 Serie

C6: CAT 6 568-A/568-B

AA: Number of Ports

12, 16, 24, 48, 72, 96

BB: Angle designation

45 = 45 degree

90 = 90 degree w/backbar

CC: Shield Level

US: Unshield

HS: Half Shielded

FS: Fully Shielded

X: Connection Style

D: New 110D

K: Krone IDC

eg. ■ **LP-P7C61245USD**, Patch Panel CAT 6 7000 Series 12 Ports 45 degrees Unshielded Conection New 110D.

Copper Solutions

PATCH PANEL CAT 5E

CAT 5e - 7000 and 8000 Series



The LanPro CAT 5e patch panels are used on high speed LAN transmission rates, with a proven bandwidth in excess of 100 MHz. These units are developed with proprietary PCB (printed circuit board) and better component geometries, resulting in a better performance surpassing TIA/EIA 568-A/B specs.

This new design allows the use of both, Krone and 110 punching tools, and has color codes 568-A and 568-B both on the top of the new version 110D for easy installation and reduced termination time. The 45 degree angle entry (only on 8000 series) is a very desirable feature, because there is less stress for both, the jack panel and the connecting patch cords. Also available the traditional flat configuration with backbar (7000 Series).

The LanPro patch panels offer the most robust patching solution for everyday use and exceed category 5e requirements on component and channel performance.

*** For those stand-alone needs, we have a CAT 5e vertical Wall Mount Mini Patch Panel.**

Features

- ETL and UL verified.
- LanPro panels are by far superior to other similar and poorly engineered products on the market.
- 568-A and 568-B compatible. 45 and 90 degree available.
- Rugged construction.
- Cable management clips at the rear of the unit.
- Backwards compatible with CAT 5 systems.
- Electrostatic black durable and elegant finish.
- High performance copper alloy contacts, 50 microinches of gold plating.
- 10/100 and 1000-base-T ready.
- Outstanding price/performance ratio.
- Available in 12, 16, 24, 48 and 72 and 96 ports.
- Fully compatible with 19" rack mount standard. We offer a full line of superior quality rack and cabinetry products.

How to order

<div>■ LP-PSCEAABBCCX</div> <div>P</div> <div>P: Patch Panel Rack Mount</div> <div>AA: Number of Ports</div> <div>12, 16, 24, 48, 72, 96</div> <div>BB: Angle designation</div> <div>45 = 45 degree</div> <div>90 = 90 degree w/backbar</div> <div>X: Connection Style</div> <div>D: New 110D K: Krone IDC</div>		<div>SCE</div> <div>S: 7= 7000 Serie</div> <div>8= 8000 Serie</div> <div>CE: CAT 5 enhanced (CAT 5e+) 568-A/568-B</div> <div>CC: Shield Level</div> <div>US: Unshield</div> <div>HS: Half Shielded</div> <div>FS: Fully Shielded</div>		<div>* CAT 5e Vertical Wall Mount Mini Patch Panel</div> <div>■ LP-WSC5AABBCCX ■ LP-WSC6AABBCCX</div> <div>W SC5 SC6</div> <div>W: Wall Mount Mini-Patch Panel. S: 7= 7000Serie S: 7= 7000Serie</div> <div>C5: CAT 5e C6: CAT 6</div> <div>AA: Number of Ports BB: Angle designation</div> <div>12 90 = 90 degree</div> <div>CC: Shield Level X: Connection Style</div> <div>US: Unshield D: New 110D</div>	
eg. ■ LP-P8CE1245USD Patch Panel CAT 5e 8000 Series, 12 Ports, 45 degrees Unshielded Conecction New 110D.				■ LP-W7C51290USD 12 port CAT 5e Vertical wall mount mini patch panel. 7000 Series unshielded.	
				■ LP-W7C61290USD 12 Port CAT 6 Vertical wall mount mini patch panel. 7000 Series unshielded.	

MODULAR JACKS CAT6

Copper Solutions

CAT 6 - 7000 and 8000 Series

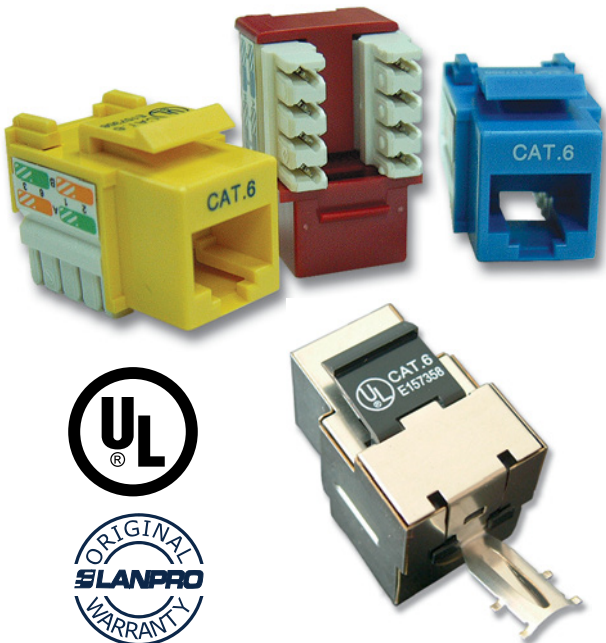
The LanPro CAT 6 (Reliable 6) system, is comprised of Reliable CAT 6 data cable, patch cords, patch panels and modular jacks. Lanpro has designed them specifically for high speed, bandwidth in excess of 250 MHz+, and easy installation. 568-A/B compatible.

Our modular jacks are designed to match perfectly our Reliable 6 compatible products. All CAT 6 devices are very adaptable to customer changing requirements. Easy installation and maximum performance.

All of them allow for universal termination, either T568-A or T568-B. To ensure a reliable connection, all CAT 6 jacks are punchdown version, thus offering a higher level of performance. Also available in (FS) fully shielded version. We do not recommend tool-less version as field experience demonstrates that punch down styles are far more reliable.

7000 Series comes standard with a strain relief cover that secures a perfect cable termination.

Notice: Our Couplers (Jacks) are also suitable for conventional phone system (CAT 3) and RJ11 is completely compatible with it. However, if you need a specific CAT 3 Jack, please have a look at to our model LP-CTWH.



Features

- ETL verified to TIA/EIA 568-B CAT 6.
- UL and CSA approved.
- Our standard style allows compatibility with many other brands and systems.
- Rugged construction.
- Eight vivid colors to choose from.
- High performance Copper alloy contacts & 50 microinches of gold plating.
- Competitively priced.
- To ensure long life all our CAT 6 series are punch down style.
- Also available FS (see text above).
- Material: ABS UL94V-0.

How to order

■ **LP-SC6****AXXCC**

SC6

S: 7= 7000 Serie
8= 8000 Serie
C6: CAT 6 568-A / 568-B

A: Connectorization

P: Punch down style (needs tool)
T: Tool-less style
(Non Recommended)

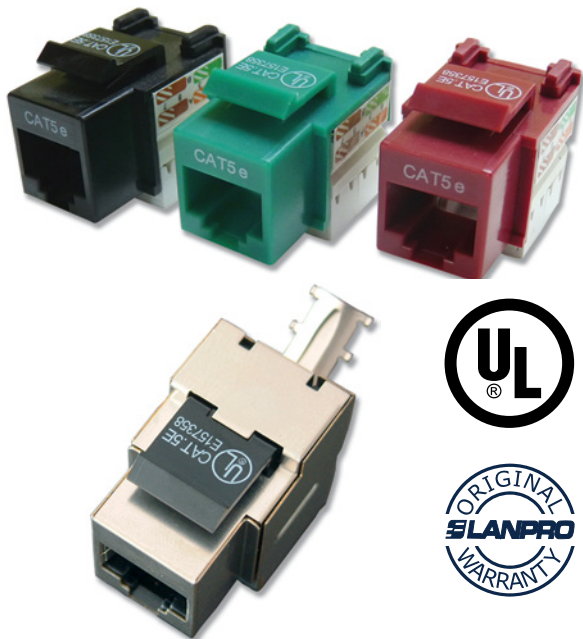
XX: Shield Level

US: unshielded
FS: fully shielded

CC: Color

WH: white	BK: Black
GN: Green	GR: Gray
YL: yellow	OR: Orange
BL: Blue	NP: Nickel plated
RD: Red	

CAT 5e - 7000 and 8000 Series



The LanPro CAT 5e system is comprised of Reliable 5e data cable, patch cords, patch panels and modular jacks. Lanpro has designed them specifically for high speed, low cost and extended life spam.

Our modular jacks are designed to match perfectly out CAT 5e products. All CAT 5e devices are very adaptable to customer changing requirements.

All of them allow for universal termination, either T568-A or T568-B. LanPro offers a (P) punchdown version, as well as the popular tool-less model (T). Both offer the same high level of performance, just a different way of cable insertion. Also available in (FS) fully shielded version.

Notice: Our Couplers (Jacks) are also suitable for conventional phone system (CAT 3) and RJ11 is completely compatible with it. However, if you need an specific CAT 3 Jack, please have a look at to our model LP-CTWH.

Features

- UL and CSA approved. Keystone jack style.
- Our standard style allows compatibility with many other brands and systems.
- Rugged construction.
- Several colors to choose from.
- High performance Copper alloy contacts, 50 microinches of gold plating.
- Easy installation and Maximun performance yet very good priced.
- Tool-less and punch down design available.
- Material: ABS UL94V-0

How to order

LP-SCE**AXXCC**

SCE

S: 7= 7000 Serie
8= 8000 Serie
CE: CAT 5 enhanced (CAT 5e+)
 568-A / 568-B

A: Connectorization

P: Punch down style (needs tool)
T: Tool-less style
 (Non Recommended)

XX: Shield Level

US: unshielded
FS: fully shielded

CC: Color

WH: white
GN: Green
YL: yellow
BL: Blue
RD: Red
BK: Black
GR: Gray
OR: Orange
NP: Nickel plated

HIGH DENSITY PATCH CORD

Copper Solutions

CAT 6

Reliable 6 patch cords are the key to a new generation of high speed/performance cabling systems.

LanPro patch cords are made of top quality flexible cable, which translates into soft bends and easy handling.

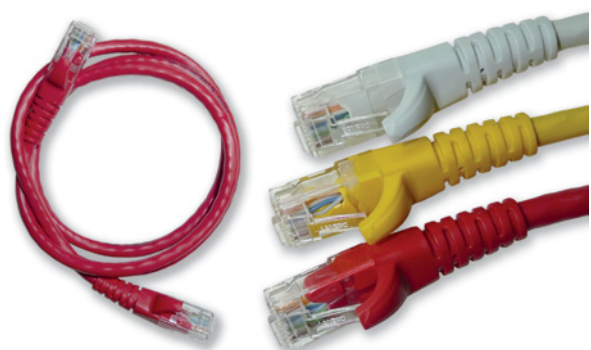
The use of hot molded snag-less boots including strain relief on the cable and plug avoid the damage to locks when handling the cables in dense installations.

Eight Bright solid colors that don't cause confusion, UV additives diminish color fading along the years. Crystal Clear plugs for improved visibility.

Our factory, hot molded strain relief patch cord provides very high mechanical strength assuring long life and many years of use and abuse.

All LanPro patch cords are 100% factory tested using top-of-the line test equipment. Don't compromise the performance of your installation with home made patch cords or cheap imitations. LanPro patch cords are not only very good, but also very affordable. Our units are guaranteed to perform in compliance with ISO/IEC 11801 standards, EIA/TIA 568-A/B, EN50173 and UL, CSA, ETL and 3P are verified.

Factory terminated and tested patch cords are required to achieve consistent category 5e or 6 channel performance. Field termination is not recommended.

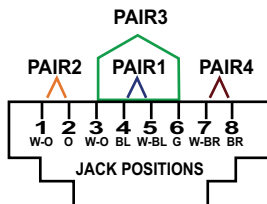


LanPro's new design offers a unique solution to high-density patching installations. Ideal for high density patch panels, blade servers, notebooks and other products with a dense setup of RJ45 outlets.

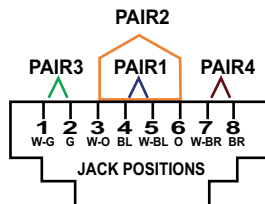
Features

<ul style="list-style-type: none"> ■ Snag-less Patch Cords. ■ ETL verified. ■ UL and CSA approved. ■ CAT 6 patch cords are backward compatible with 5e, 5 and lower category systems. ■ Made of highly flexible, stranded data cable. ■ Factory molded strain-relief boots for a long life and great appearance. Manipulations and pulling of these cables are no longer a matter of concern for the installer. ■ Fully, 100% factory tested. 	<ul style="list-style-type: none"> ■ 568-A/B compatible. ■ Eight vivid colors to choose from. ■ 0.5 m, 1 m, 2 m, 3 m, 4 m, 6 m and 20 m lengths currently available. (Approx: 1.5, 3, 6, 10, 13, 20 and 65 feet). ■ Custom lengths available upon request. ■ TECH TIP: We strongly recommend our hot-molded patch cords (with hot molded snag-less lock protector and cable strain reliever) which fit perfectly even in today's most cramped hubs and telecomm equipment. Separate boots for protecting the locks sometimes protrude around enough that it becomes a very difficult task when you want to hook all the patch cords to the equipment.
--	---

RJ45 T568B Pin Assignment



RJ45 T568A Pin Assignment



Note

1. The two diagrams above are a front view of the connector.
2. T568-B is the same as AT&T 258A wiring.

Wiring Informations & Coding of T568-A & B - Color Coding Information

IDC TERMINAL	T568-A PAIR/WIRE COLOR		T568-B PAIR/WIRE COLOR	
Pin 5	1	WHITE/BLUE	1	WHITE/BLUE
Pin 4		BLUE		BLUE
Pin 1	3	WHITE/GREEN	2	WHITE/ORANGE
Pin 2		GREEN		ORANGE
Pin 3	2	WHITE/ORANGE	3	WHITE/GREEN
Pin 6		ORANGE		GREEN
Pin 7	4	WHITE/BROWN	4	WHITE/BROWN
Pin 8		BROWN		BROWN

How to order

<p>■ LP-4C6XXCCL</p>	<p>4C6</p> <p>4C6= 4 Pairs CAT 6</p> <p>XX: Plug Type</p> <p>US: Unshielded FS: Fully Shielded</p>	<p>CC: Color</p> <p>WH: white RD: Red GN: Green BK: Black YL: yellow GR: Gray BL: Blue OR: Orange</p>	<p>L: Length</p> <p>05=0.5 m 1=1 m 2=2 m 3=3 m 4=4 m 6=6 m 20=20 m</p>
	<p>Special size on demand, Min Qty Applies.</p>		
	<p>All models are Hot Molded High Density design.</p>		
	<p>All AWG24 Caliber. 568-B is our preferred inventory.</p>		

HIGH DENSITY PATCH CORD

Copper Solutions

CAT 5e

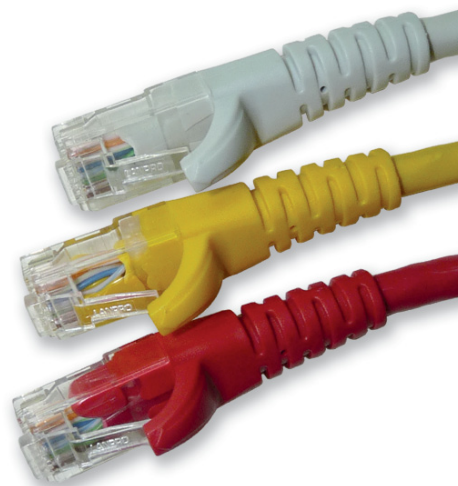
The LanPro cords are made with very flexible cable, which translates into soft bends and easy handling.

The use of hot-molded snag-less boots including the strain reliever on the cable and plug avoid the damage to locks when handling the cables in dense installations.

Eight Bright solid colors that don't cause confusion, UV additives diminish color fading along the years.

Our factory, hot-molded strain-relief patch cord provides very high mechanical strength assuring long life and many years of use and abuse.

All LanPro patch cords are 100% factory tested using top-of-the line test equipment. Don't compromise the performance of your installation with home made patch cords or cheap imitations. LanPro patch cords are not only very good, but also very affordable. Our units are guaranteed to perform in compliance with ISO/IEC 11801 standards, EIA/TIA 568-A/B, EN50173 and UL, CSA, ETL and 3P are verified.

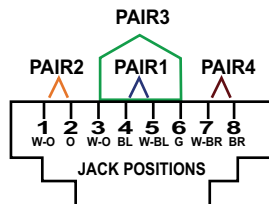


LanPro's new design offers a unique solution to high-density patching installations. Ideal for high density patch panels, blade servers, notebooks and other products with a dense setup of RJ45 outlets.

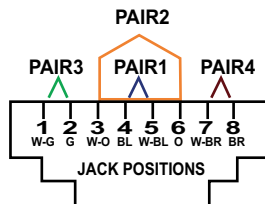
Features

- | | |
|--|---|
| <ul style="list-style-type: none"> ■ Snag-less Patch Cords. ■ ETL verified. ■ UL and CSA approved. ■ CAT 5e patch cords are backward compatible with CAT 5 and lower category systems. ■ Made of highly flexible, data cable. ■ Factory molded strain-relief boots for a long life and great appearance. Manipulations and pulling of these cables are not longer a matter of concern for the installer. | <ul style="list-style-type: none"> ■ Fully, 100% factory tested. ■ 568-A/B compatible. ■ Eight vivid colors to choose from. ■ 0.5 m, 1 m, 2 m, 3 m, 4 m, 6 m and 20 m lengths currently available. (Aprox: 1.5, 3, 6, 10, 13, 20 and 65 feet). ■ Custom lengths available upon request. ■ TECH TIP: We strongly recommend our hot-molded patch cords (with hot molded snag-less lock protector and cable strain reliever) which fit perfectly even in today's most cramped hubs and telecomm equipment. Separate Boots for protecting the locks sometimes protrude around enough that it becomes a very difficult task when you want to hook all the patch cords to the equipment. |
|--|---|

RJ45 T568B Pin Assignment



RJ45 T568A Pin Assignment



Note

1. The two diagrams above are a front view of the connector.
2. T568-B is the same as AT&T 258A wiring.

Wiring Informations & Coding of T568-A & B - Color Coding Information

IDC TERMINAL	T568-A PAIR/WIRE COLOR	T568-B PAIR/WIRE COLOR
Pin 5	1 WHITE/BLUE	1 WHITE/BLUE
Pin 4	BLUE	BLUE
Pin 1	3 WHITE/GREEN	2 WHITE/ORANGE
Pin 2	GREEN	ORANGE
Pin 3	2 WHITE/ORANGE	3 WHITE/GREEN
Pin 6	ORANGE	GREEN
Pin 7	4 WHITE/BROWN	4 WHITE/BROWN
Pin 8	BROWN	BROWN

How to order

	4CE	CC: Color	L: Length
	4CE= 4 Pairs CAT 5e+	WH: white GN: Green YL: yellow BL: Blue	RD: Red BK: Black GR: Gray OR: Orange
	XX: Plug Type		05=0.5 m 1=1 m 2=2 m 3=3 m 4=4 m 6=6 m 20=20 m
	US: Unshielded FS: Fully Shielded		
<div> <div></div> <div>LP-4CEXXCCL</div> </div>			
	eg. <div>LP-4CEUSWH05</div> High Density Patch Cord 4 Pairs CAT 5e+ Unshielded White 0.5m		
	Notes: Crossover cable also available. Only black color and 3 m (9ft) long. Special sizes on demand. Minimum Quantities apply.		
	<div>LP-4CECR3MBK 3M Black Color CAT 5e Crossover Patch Cord</div> All models are Hot Molded High Density design. All AWG24 Caliber. 568-B is our preferred inventory.		

NETWORK CAT 6

Copper Solutions

CAT 6

Reliable 6 cable is the answer given by LanPro to the large demand imposed by today's high performance applications, at reasonable prices.

Reliable 6 is UL, ULc, and ETL approved and exceeds TIA/EIA 568-B.2-1 specifications for Category 6 (CAT 6).

Now with "flexible-x" construction, reliable 6 cable isolates the pairs throughout the length of the cable, improving field installation as well as performance.

Reliable 6 cable available for immediate delivery on gray and blue colors, other colors available under request.

Exceeds TIA/EIA 568-B.2-1 Category 6 SPECS.

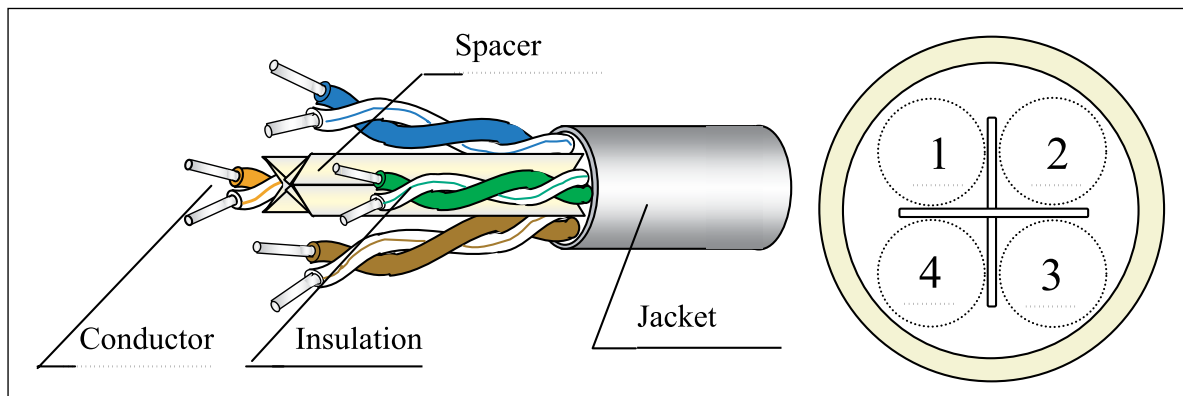
For Gigabit Ethernet, 100BASE-Tx, token-ring, 155 Mbps ATM, 100 Mbps TP-PMD, ISDN, analog (Broadband, Baseband), digital video and Voice over IP(VoIP), it can also be used for Video surveillance IP cameras.



Features

- | | |
|---|--|
| <ul style="list-style-type: none"> ■ ETL verified to TIA/EIA 568-B CAT 6. ■ UL, ULc and ETL approved. ■ Very Flexible. ■ Superior performance to traditional designs. ■ 568-A and 568-B compatible. ■ This Cable exceeds TIA/EIA-568-B.2-1 e ISO/IEC 11801:2002 Class E, IEC61156-5, IEC60332-1-2, EN50288-6-1 y EN50173-1. ■ Rugged construction. ■ Backward compatible with CAT 5e and CAT 5 systems. | <ul style="list-style-type: none"> ■ Excellent price/performance ratio. ■ Available in gray and blue colors. Others upon request. ■ Four (4) 23 AWG Twisted Pairs. ■ Cover Jacket: Flame retardant Comes standard CMX, with CM, CMR and Plenum with tough thermoplastic cover Jacket with a thickness of 0,48mm. ■ Reliable 6 is a robust product. ■ Packaged in one convenient presentation: 1000 feet per box. Weight: 28lbs (12.5Kgs), easy-pull Boxes. |
|---|--|

Morphology



How to order

LP-C6TTTCCPSFCC		TTT= Type	
Category			
C6= CAT 6			
CC= Color			
WH=	White	0--=	Solid UTP (U/UTP).
GN=	Green	1--=	Stranded UTP (U/UTP).
YL=	Yellow	2--=	FTP (F/UTP) Foil over Stranded AWG26 UTP.
BL=	Blue	3--=	FTP (F/UTP) Foil over Solid UTP.
RD=	Red	4--=	SFTP (S/FTP) Braid over Individually Foiled Stranded AWG26 TP.
BK=	Black	5--=	SFTP (S/FTP) Braid over individually Foiled Solid TP.
GR=	Gray	6--=	Stranded U/FTP.
OR=	Orange	7--=	Solid U/FTP.
		8--=	Stranded F/FTP.
		9--=	Solid F/FTP.
		A--=	SF/FTP Braid over Overall shield foil over individually shielded Solid Conductors TP.
		B--=	SF/FTP Braid over Overall shield foil over individually shielded Stranded Conductors TP.
		--0=	Copper 100%
P= Packing		F= LSZH rating	
B=	1000ft box	Blank=	No if it is not LSZH Rated.
S=	100m spool	1=	Yes if it is a LSZH rated.
C=	1000ft Wood spool		
S= Strength Member		CC= Color of internal Jacket	
1=	8 Figure stranded steel strength member.	WH=	White
2=	8 Figure FRP strength member.	GN=	Green
3=	Interlock Armor.	YL=	Yellow
0=	No strength member and if it is LSZH Rated in the next position.	BL=	Blue
Blank	Nothing if no strength member and it is not LSZH rated and internal jacket is Gray colored.	RD=	Red
		BK=	Black
		GR=	If Gray, this code is a Blank (Standard) as in most common of outdoor types, unless the internal jacket is not gray.
		OR=	Orange
Examples:			
LP-C6000BLB	LanPro Reliable Network Cable, CAT 6 type U/UTP (UTP), solid, 100% copper, AWG 23 Blue (CMX), with Flexible-x™ nylon core for simetry in 1000ft easy pull box.		
LP-C6000GRB	LanPro Reliable Network Cable, CAT 6 type U/UTP (UTP), solid, 100% copper, AWG 23 Gray (CMX), with Flexible-x™ nylon core for simetry in 1000ft easy pull box.		
LP-C6000BLB01	LanPro Reliable Network Cable, CAT 6 type U/UTP (UTP), solid, 100% copper, AWG 23 Blue (CMX), LSZH rated, with Flexible-x™ nylon core for simetry in 1000ft easy pull box.		
LP-C6000GRB01	LanPro Reliable Network Cable, CAT 6 type U/UTP (UTP), solid, 100% copper, AWG 23 Gray (CMX), LSZH rated, with Flexible-x™ nylon core for simetry in 1000ft easy pull box.		
LP-C6300BLB	LanPro Reliable Network Cable, CAT 6 type F/UTP (FTP), solid, 100% copper, AWG 23 Blue (CMX), with Flexible-x™ nylon core for simetry in 1000ft easy pull box.		

NETWORK CAT 5E

Copper Solutions

CAT 5e

Reliable 5e cable is the answer given by LanPro to the big demand of today's high performance applications at reasonable pricing.

Reliable 5e is UL, CSA and ETL certified.

Our Reliable CAT 5e is suitable for all applications designated for this category. Performance specifications calculated at 100 MHz+. The heavy jacket allows hard pulling and manipulation of the cable without damage.

Available for immediate delivery on gray and blue colors, other colors available also under request.

Exceeds TIA/EIA 568-B & ISO / IEC11801 Category 5e Specifications.

Applications: 10baseT (IEEE802.3), fast ethernet (IEEE 802.3u), 100vg-anyLan (IEEE 802.12), token ring (IEEE 802.5), TP-PMD (ANSI X3T9.5), 100 Mbps CDDI and ATM155.



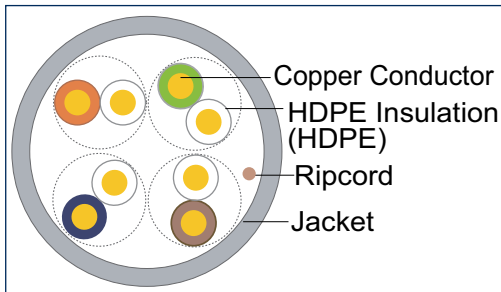
Constructive Characteristics

- **Conductor:** Bare Solid copper wire 24 AWG
- **Insulation:** HDPE
- **Jacket:** Flame retardant CMX, CM, CMR or CMP and LSZH
- **Color Code:** White/blue, White/green, White/brown, White/orange, (White insulation with stripe).

Features

- | | |
|--|---|
| <ul style="list-style-type: none"> ■ ETL verified to TIA/EIA 568-B / ISO/IEC11801 CAT 5e. ■ UL, ULC and ETL approved Category cable. ■ Very Flexible. ■ Superior performance to traditional designs. ■ 568-A and 568-B compatible. ■ Rugged construction. ■ Backward compatible with CAT 5 systems. ■ Excellent price/performance ratio. ■ Available in gray and blue colors ■ 4 pairs 24 AWG UTP. ■ Individual conductors diameter 0.49mm. | <ul style="list-style-type: none"> ■ Color code: White/Blue, White/Green, White/Brown, White/ Orange, White insulation stripe. ■ Marking Ink-Jet. ■ Insulation HDPE: 0.20mm ■ Ripcord included. ■ Outer Diameter: 5.3mm ■ Cover Jacket: Flame retardant comes standard CMX, with CM, CMR and PLENUM also available with thickness of 0.48mm. ■ Packaged in two convenient presentations: <ul style="list-style-type: none"> *1000 feet per box(304.8m).Weight: 28lbs (12.5Kg) easy-pull Boxes. *328.1 feet spools (100m). Weight: 8.8lbs (4Kg). |
|--|---|

Morphology



Internal arrangement of conductors inside a CAT 5e LanPro Cable.

Reliable 5e Cable. Outstanding price/performance ratio. Built to last.



UL Aproved. ETL Certified. 3rd Party Tested.



How to order

LP-CETTTCCPSFCC

Category

CE= CAT 5e+ or
CAT 5e Enhanced

CC= Color

WH= White
GN= Green
YL= Yellow
BL= Blue
RD= Red
BK= Black
GR= Gray
OR= Orange

TTT= Type

0--= Solid UTP (U/UTP).	-0= CMX
1--= Stranded UTP (U/UTP).	-1= CM
2--= FTP (F/UTP) Foil over Stranded AWG26 UTP.	-2= CMR
3--= FTP (F/UTP) Foil over Solid UTP.	-3= CMP (PLENUM)
4--= SFTP (S/FTP) Braid over Individually Foiled Stranded AWG26 TP.	
5--= SFTP (S/FTP) Braid over individually Foiled Solid TP.	
6--= Stranded U/FTP.	
7--= Solid U/FTP.	--0= Copper 100%
8--= Stranded F/FTP.	
9--= Solid F/FTP.	
A--= SF/FTP Braid over Overall shield foil over individually shielded Solid Conductors TP.	
B--= SF/FTP Braid over Overall shield foil over individually shielded Stranded Conductors TP.	

P= Packing

B= 1000ft box
S= 100m spool
C= 1000ft Wood spool

F= LSZH rating

Blank= No if it is not LSZH Rated.
1= Yes if it is a LSZH rated.

CC= Color of internal Jacket

WH= White
GN= Green
YL= Yellow
BL= Blue
RD= Red
BK= Black
GR= If Gray, this code is a Blank (Standard) as in most common of outdoor types, unless the internal jacket is not gray.
OR= Orange

S= Strength Member

1= 8 Figure stranded steel strength member.
2= 8 Figure FRP strength member.
3= Interlock Armor.
0= No strength member and if it is LSZH Rated in the next position.
Blank Nothing if no strength member and it is not LSZH rated and internal jacket is Gray colored.

Examples:

- **LP-CE000BLB** LanPro Reliable CAT 5e (CAT 5 Enhanced), Solid UTP copper conductors, Standard CMX Gray Jacket, 1000 ft Box.
- **LP-CE000BLS** LanPro Reliable CAT 5e (CAT 5 Enhanced), Solid UTP copper conductors, Standard CMX Gray Jacket, 100 m Spool.

CAT 6 OUTDOOR



LanPro manufactures high grade outdoor CAT 6 cables. The outer jacket is constructed with black high-density polyethylene (PE), which is extremely durable and offers a very long product life (20 year life) with resistance against water permeation, moisture, UV, grease, oils, extreme temperatures. This external jacket offers a positive protection against corrosion, erosion and friction and there is an optional rodent attack protection PE type that pests like rats will not like to bite.

LanPro manufactures several models of Outdoor CAT 6 Network Cables: U/UTP Single PE Jacket Gel-filled, U/UTP Single PE Jacket with Water block tape, and the double Jacketed PE+CMX models is F/UTP. The shielded version with drain wire made of 100% copper reduces greatly the EM interference encountered in hostile outdoor environments, being recommended for radios and other wireless IP based equipment. Other special outdoor cables can be produced under request as well as in special lengths, colors and terminations.

The internal jacket is CMX gray color as standard, and can be supplied in different colors and fire ratings (CM, CMR, CMP, and LSZH) as a special order.

Outdoor CAT 6 is UL, ULc, and ETL approved and exceeds TIA/EIA 568-B.2-1 specifications for Category 6 (CAT 6).

Now with "flexible-x" construction, CAT 6 cable isolates the pairs throughout the length of the cable, improving field installation as well as performance.

For Gigabit Ethernet, 100BASE-Tx, token-ring, 155 Mbps ATM, 100 Mbps TP-PMD, ISDN, analog (Broadband, Baseband), digital video and Voice over IP (VoIP), it can also be used for Video surveillance IP cameras.

The use of traditional indoor grade Category 6 cable in outdoor applications subjects it to rapid deterioration. Installation of indoor CAT 5e cable inside a conduit does not make it outdoor suitable either. Conduits filled with water will deteriorate the cable rapidly.

Therefore, choosing a high quality outdoor (UV-rated) CAT 6 cable with PE jacket and HDPE conductor insulation is extremely important. Lanpro outdoor cables will avoid costly network outages, keeping network reliability high and maintenance costs low. Some of our CAT 6 cables, like the LP-C6370BKC with Double Jacket, F/UTP Shielded are direct burial. However, the use of a conduit is recommended.

If the cable is not well made or UV-rated, it may snag when coming out of the box, causing an installation breakdown or failure in sunlight over time. Wi-Fi towers and their installations MUST use this kind of product to avoid fast deterioration of the cabling set-up due to weather, dust, sun, and rude environment.

We, at LanPro, have taken every aspect of an installation into account along with maintaining a decent cost solution while designing this product.

And now, with the optional External PE Jacket Rattenweg™, (PE Rodent Resistance option), you keep rodents from biting and damaging the PE Jacket.

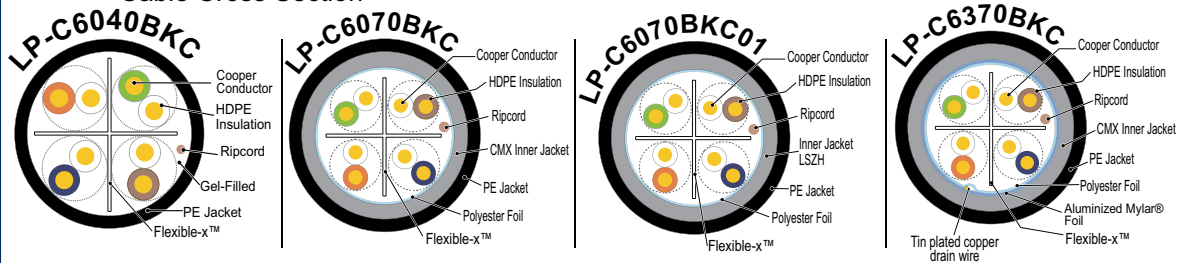
Features

- Exceeds all standards for CAT 6 communication cable and is able to pass a CAT 6A certification test even though it is a CAT 6 cable.
- Extremely durable.
- Resistant to UV Rays.
- Abrasion resistant.
- Unshielded / Shielded.
- Black PE Jacket.
- Direct burial.
- Capable of 250 MHz transmission giving you additional performance.
- Rattenweg™, (PE Rodent Resistance option).
- Fire retardant CMX or optionally CM, CMR, CMP and LSZH internal jacket which enables this part of the cable to run into premises after the PE jacket is removed at the entrance to the building.
- Operating voltage ≤ 48 Volt rms.

Applications

- Outdoor Cable runs to Wireless Access Points (AP), Bridges or CPE.
- Outdoor Cable runs to IP Video Surveillance Cameras.
- Inter-building networks.
- Ethernet, Phone, Paging, Alarm, Video and Power-over-Ethernet (PoE) Networks.
- The perfect CAT 6 cable for outdoor residential and commercial installations.
- Situations where reliability is of paramount importance, as in military complexes, hospitals, extreme weather locations, airports.

Cable Cross Section



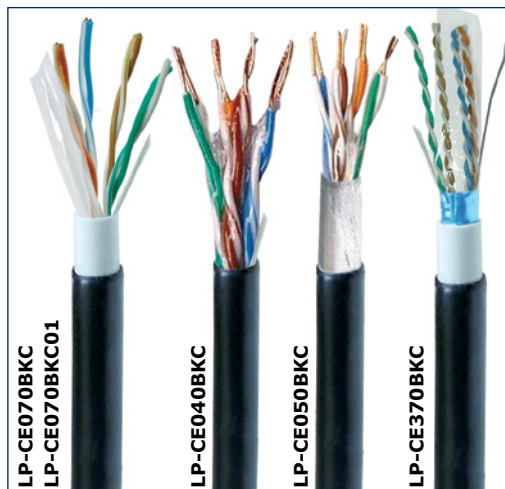
How to order

- LP-C6040BKC** Network Cable, all Weather Outdoor CAT 6 type U/UTP, solid, 100% copper, AWG 23, Ripcord with Single Black PE Jacket, Gel Filled, Flooded core in 1000ft wood spool.
- LP-C6070BKC** Network Cable, all Weather Outdoor CAT 6 type U/UTP, solid, 100% copper, AWG 23 with Double Jacket, Black PE + Gray (CMX), with Flexible-x™ nylon core for simetry with ripcord in 1000ft wood spool.
- LP-C6070BKC01** Network Cable, all Weather Outdoor CAT 6 type U/UTP, solid, 100% copper, AWG 23 with Double Jacket, Black PE + Gray LSZH rated, with Flexible-x™ nylon core for simetry with ripcord in 1000ft wood spool.
- LP-C6370BKC** Network Cable, all Weather Outdoor CAT 6 type F/UTP (FTP), solid, 100% copper, AWG 23, Aluminum Foil with drain wire, with Double Jacket Black PE + Gray (CMX), with Flexible-x™ nylon core for simetry with ripcord in 1000ft wood spool.

NETWORK CABLES

Copper Solutions

CAT 5E OUTDOOR



LanPro manufactures high grade outdoor CAT 5e cables. The outer jacket is constructed with black high-density polyethylene (PE), which is extremely durable and offers a very long product life (20 year life) with resistance against water permeation, moisture, UV, grease, oils, extreme temperatures. This external jacket offers a positive protection against corrosion, erosion, friction and there is an optional rodent attack protection PE type that pests like rats will not like to bite.

LanPro manufactures several models of Outdoor CAT 5e Network Cables: U/UTP Single PE Jacket Gel-filled, U/UTP Single PE Jacket with Water block tape, and the double Jacketed PE+CMX models is F/UTP. Other special outdoor cables can be produced under request as well as in special lengths, colors and terminations.

The internal jacket is CMX gray color as standard, and can be supplied in different colors and fire ratings (CM, CMR, CMP, and LSZH) as a special order.

The use of traditional indoor grade Category 5E cable in outdoor applications subjects it to rapid deterioration. Installation of indoor CAT 5e cable inside a conduit does not make it outdoor suitable either. Conduits filled with water will deteriorate the cable rapidly.

Therefore, choosing a high quality outdoor (UV-rated) CAT 5e cable with PE jacket and HDPE conductor insulation is extremely important. Lanpro outdoor cables will avoid costly network outages, keeping network reliability high and maintenance costs low. Some of our CAT 5e cables, like the LP-CE070BKC with Double Jacket, are direct burial. However, the use of a conduit is recommended.

If the cable is not well made or UV-rated, it may snag when coming out of the box, causing an installation breakdown or failure in sunlight over time. Wi-Fi towers and their installations MUST use this kind of product to avoid fast deterioration of the cabling set-up due to weather, dust, sun and rude environment.

If further protection performance and confidence are needed, you may opt for the CAT 6 shielded version also available from us.

We, at LanPro, have taken every aspect of an installation into account along with maintaining a decent cost solution while designing this product.

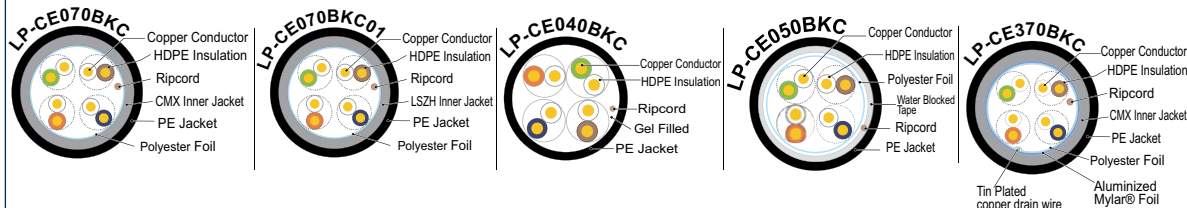
Applications

- | | |
|--|---|
| <ul style="list-style-type: none"> Outdoor Cable runs to Wireless Access Points (AP), Bridges or CPE. Outdoor Cable runs to IP Video Surveillance Cameras. Inter-building networks. | <ul style="list-style-type: none"> Ethernet, Phone, Paging, Alarm, Video and Power-over-Ethernet (PoE) Networks. The perfect CAT 5e cable for outdoor residential and commercial installations. Situations where reliability is of paramount importance, as in military complexes, hospitals, extreme weather locations, airports. |
|--|---|

Features

- Exceeds all standards for CAT 5e communication cable and is able to pass a CAT 6 certification test even though it is a CAT 5e cable.
- Extremely durable.
- Resistant to UV Rays.
- Abrasion resistant.
- Unshielded / Shielded.
- Black PE Jacket.
- Direct burial.
- Capable of 100 MHz transmission giving you additional performance.
- Rodent resistant (PE Rodent Resistance option).
- Fire retardant CMX or optionally CM, CMR, CMP and LSZH internal jacket which enables this part of the cable to run into premises after the PE jacket is removed at the entrance to the building.
- Operating Voltage ≤ 48 Volt rms.

Cable Cross Section



How to order

- LP-CE070BKC01** Network Cable, all Weather Outdoor CAT 5e type U/UTP, solid, 100% copper, AWG 24, with Double Jacket, Black PE + Gray LSZH rated, in 1000 ft wood spool.
- LP-CE040BKC** Network Cable, all Weather Outdoor CAT 5e type U/UTP, solid, 100% copper, AWG 24, with Single Black PE Jacket, Gel Water Blocking Flooded core in 1000ft wood spool.
- LP-CE050BKC** Network Cable, all Weather Outdoor CAT 5e type U/UTP, solid, 100% copper, AWG 24, with Single Black PE Jacket and Water Blocking Tape, in 1000 ft wood spool.
- LP-CE070BKC** Network Cable, all Weather Outdoor CAT 5e type U/UTP (UTP), solid, 100% copper, AWG 24, with Double Jacket Black PE + Gray (CMX), in 1000 ft wood spool.
- LP-CE370BKC** LanPro Reliable® CAT 5E F/UTP Outdoor Network Cable, solid AWG 24 100% copper, Aluminum over Mylar® Foil shield with drain wire, Double Jacket (Black PE plus Gray CMX) and ripcord in a 1000 ft (305m) wood spool.
- LP-CE070BKS** Network Cable, all Weather Outdoor CAT 5e type U/UTP (UTP), solid, 100% copper, AWG 24, with Double Jacket Black PE + Gray (CMX), in 100 m Box.
- LP-CE000GRC2** LanPro Reliable® CAT 5e U/UTP Fig 8 Outdoor Network Cable with 1.2 mm Solid Messenger wire for 100m span, UV rated Gray CMX Jacket with AWG 24 solid copper conductors, 1000 ft Wood Spool.
- LP-CE0N0BKC2** LanPro Reliable® CAT 5e U/UTP Fig 8 Outdoor Network Cable with 1.2 mm Solid Messenger wire for 100m span, Black PE Jacket with AWG 24 Solid Copper conductors, 1000 ft Wood Spool.
- LP-CECN0BKC** LanPro Reliable® CAT 5e SF/UTP Outdoor Network Cable, with 4 pairs of AWG 24 solid 100% copper conductors with an overall layer of Aluminum Foil shield and with an Aluminum-Magnesium braid of 60% coverage wound on top of it. It also includes a drain wire and a Single Black PE Jacket with ripcord in a 1000 ft (305m) wood spool.

NETWORK CABLES

Copper Solutions

Bi-Metallic, CAT 5e

This cable is manufactured with bi-metallic technology, with the purpose of lowering cost without compromising performance and certification for most of the structured cabling applications in the market.

The technology of Bi-metallic cables is based in the high frequency skin effect in which most of the current flows near the surface of the conductor and much less in the core, that is why the core is made of aluminum and the surface is copper.

Excellent handling characteristics for the installer, with a jacket made with CMX® material, a very tough and abrasion resistant material.

With its AWG 23 wires, more than the average AWG 24 found in the market, it gives better characteristics to the user.

A Copper/Aluminum ratio of 41/59, warrants the user excellent characteristics for the Price. Malleability, resistivity per meter and permits true certification as a CAT 5e UTP cable for 100 m runs.

It has a uniform structure along the length of the cable, by means of uniform wire twist machining in the fabrication process that reduces cross talk between pairs to values that ensure certification.



Features

For structured UTP cable installations in indoors.

Enables wiring of all kinds of network equipment based in the CAT 5e standard.

Power distribution to remote data equipment based in the PoE technology, limited to 75m. For 100m runs, we recommend our traditional 100% copper CAT 5e cable.

We have subjected this cable to open flame and taken a photo of the cable extinguishing features.

How to order

■ **LP-CETTTCCP**

CE	
CE	CAT 5e

TTT	
T	Type
0--	Solid UTP
-0-	CMX
--1	Bi-Metallic

CC	
WH	White
GN	Green
YL	Yellow
BL	Blue
GR	Gray
RD	Red
BK	Black
OR	Orange

P	
B	1000ft box
S	100m spool

Example:

LP-CE001CCP Bi-Metallic CAT 5e UTP Cable.



INLINE COUPLER

Copper Solutions

(BACK TO BACK) CONNECTORS CAT 6, CAT 5e AND CAT 3

The LanPro In-Line Couplers allow you to connect diverse patch cords without reducing the performance of the link/channel.

Add a patchcord to your existing set up without degrading channel performance.



Features

- UL and CSA certified.
- 568-A and 568-B compatible and telephony.
- Rugged construction.
- Available in White color & Black color.
- High performance Copper alloy contacts, 50 microinches of gold plating.
- Very good priced.
- Material: ABS UL94V-0.

How to order

LP-CPTCC

CP

CP= Inline Coupler

T: Type

C6= CAT 6

CE= CAT 5e

CT= CAT 3 and telephony

CC: Color

WH= White

BK= Black

BOOTS

These RJ-45 Snag-less Boots are a needed accessory for field made cables. When added to your patch cables, they will provide additional strain relief and snag free features. Available in gray, blue, black, white, red, green, yellow, orange, and purple. Bag of 100 pieces.



Features

- Provides a snag free surface that protects your fingers when inserting or extracting the plug.
- Enhances the strain relief characteristics
- Color coded for a neat cabling scheme
- Easy to install

How to order

LP-B101CC

CC: Color

WH: white

GN: Green

YL: yellow

BL: Blue

RD: Red

BK: Black

GR: Gray

OR: Orange

ALL POLICARBONATE CRYSTAL CLEAR GOLD PLATED CAT 3 AND TELEPHONY, CAT 5e AND CAT 6



RJ11(6P2C)
LP-RJ116P2CCTUS



RJ14(6P4C)
LP-RJ146P4CCTUS



RJ25(6P6C)
LP-RJ256P6CTLUS



RJ45(8P8C) Cat5e
LP-RJ458P8CCEUS



RJ45(8P8C) Cat6
LP-RJ458P8CC6US



RJ09(4P2C)
LP-RJ094P2CTLUS



RJ09(4P4C)
LP-RJ094P4CTLUS



Lanpro offers 11 different models of plugs to satisfy the most demanding requirements of both solid and stranded kinds of cables.

These plugs allow the field preparation of patch cords in 1, 2, 3 and 4 pair combinations, using solid cable AWG 26, 24 or 22.

All LanPro plugs have 50 microns of gold plating over nickel alloy, assuring a long life and a high degree of resistance against corrosion and environment hazards. The use of polycarbonate over regular acrylic or cheaper plastics improves factors as temperature resistance, impact resistance and optical properties.

Tech Tip: Patch Cords CAT 5e and CAT 6 should not be manufactured in the field by hand. They have to be factory produced and 100% tested to assure performance and reliability. LanPro offers a wide range of patch cords with outstanding reliability and excellent prices.

Features

- Gold plated alloy, polycarbonate case and precision tooling outperform competitors plugs.

- Rugged construction.
- High performance Copper alloy contacts, 50 microinches of gold plating.

How to order

CAT 3 and Telephony.

- LP-RJ116P2CCTUS CAT 3 and Telephony Gold Plated Modular Plug.
- LP-RJ146P4CCTUS CAT 3 and Telephony Gold Plated Modular Plug.
- LP-RJ256P6CTLUS Telephone Gold Plated Modular Plug. (Formerly LP-535R).

CAT 5e.

- LP-RJ458P8CCEUS CAT 5e and Telephony Applications, up to 4 Phone Lines. (Formerly LP-8850R), Unshielded.
- LP-RJ458P8CCEHS CAT 5e Gold Plated Modular Plug, Half Shielded
- LP-RJ458P8CCEFS CAT 5e Gold Plated Modular Plug, Fully Shielded

CAT 6.

- LP-RJ458P8CC6US CAT 6 Gold Plated Modular Plug.(Formerly LP-88501X), Unshielded.
- LP-RJ458P8CC6HS CAT 6 Gold Plated Modular Plug, Half Shielded
- LP-RJ458P8CC6FS CAT 6 Gold Plated Modular Plug, Fully Shielded

Telephone Handset.

- LP-RJ094P2CTLUS 4P2C Headset Telephony Gold Plated Modular Plug, One Pair.
- LP-RJ094P4CTLUS 4P4C Headset Telephony Gold Plated Modular Plug,Two Pairs.

MODULAR JACKS

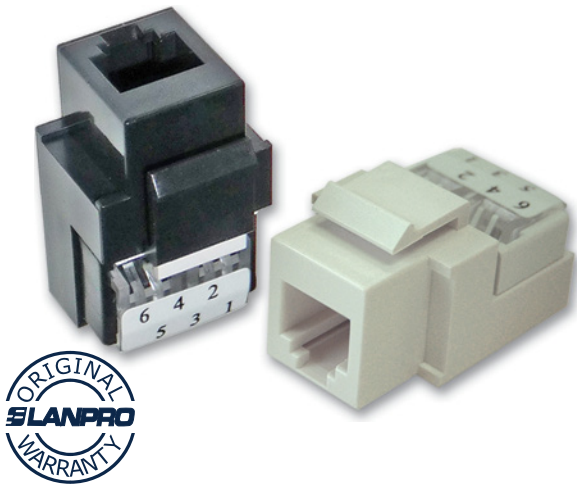
Copper Solutions

CAT 3 AND TELEPHONY

The LanPro CAT 3 Keystone Jacks provide a cost effective approach for category 3 and telephony applications. They are easy to install and very flexible.

Our modular jacks are designed to match perfectly with cables and cords.

Our CAT 3 jacks are 100% compatible with our entire line of faceplates. The mix of CAT 3 jacks with CAT 5, CAT 5e and CAT 6 units on the same faceplate is totally acceptable and provides flexibility to the designer.



Features

- | | |
|--|---|
| <ul style="list-style-type: none">■ UL and CSA approved. Housing-flame retardant (UL94 V-0).■ Compatible with RJ11 (6P2C), RJ14 (6P4C) and RJ25 (6P6C).■ Rugged construction.■ White and Black Color. | <ul style="list-style-type: none">■ High performance Copper alloy contacts, 50 microinches of gold plating.■ Very good priced.■ Tool-less design.■ Used in analog & digital Telephone systems. |
|--|---|

How to order

■ LP-CTCC

CT

CT: CAT 3 and Telephony.

CC: Color

WH: White
BK: Black

50 AND 100 PAIR STAND ALONE WITH LEGS OR 19 INCH RACK MOUNT 110 STYLE CONNECTION BLOCKS



LanPro 110 field termination kits combine category 5e performance with unparalleled installation features. Each kit includes connecting blocks to complete each 50 or 100 pair termination strips

- **Durable Design** — Rugged high impact, flame-retardant polycarbonate easily withstands force of impact tools.
- **Multi-Application Support** — Ideal for use in cross-connect and consolidation point applications.
- **Block Markings** — Termination strips on the base are marked in 5-pair increments. Connecting blocks are color-coded.
- **Comes in two formats:** legged for wall mounting or 19" rack mounting.

Features

- | | |
|--|---|
| <ul style="list-style-type: none"> ■ A very convenient and durable design that ensures reliable connections that require much less maintenance than the competition. ■ Colored labels that are interchangeable and make wire identification an easy task. ■ An opening between rows (Patented), allows easy organization and routing of the cables. ■ A wider range of applications is ensured by being available in 50 and 100 pairs per block. | <ul style="list-style-type: none"> ■ 50 pair block includes ten 4 pair and two 5 pair clips and the 100 pair block includes twenty 4 pair clips and four 5 pair clips. Screws, ID labels with holder are also included. ■ A 110 punch down tool is required to terminate the wires. ■ Perfect for wiring home and office networks. ■ High quality construction. |
|--|---|

How to order

- | | |
|---|--|
| <ul style="list-style-type: none"> ■ LP-T50L 50 Pair 110 Style Block With Legs ■ LP-T100L 100 Pair 110 Style Block With Legs ■ LP-T100R 100 Pair 110 Style Block Rack Mount | <ul style="list-style-type: none"> ■ LP-CK4P 4 Pair Clip ■ LP-CK5P 5 Pair Clip |
|---|--|

ACCESSORIES

Cabling Management

Wire and cable bundle ties and shrink tubing.

LanPro carries a wide line of tie wraps and shrinkable tubing. In the tie-wraps from self-locking to finger releasable in various styles, strengths, colors and lengths to suit the application and give the users maximum flexibility in their installations and in the shrinkable tubing a variety of sizes and colors.

▣ Nylon Tie Wraps Professional Grade.

Made for the field professional for long life and reliable cable and duct organization. Come in several sizes that hold from 8Kg to 22 Kg in bundle tension.

How to order

- ▣ **LP-NTWP12002P5** (120mm x 2.5mm. Bundle Diam 25mm. Max 8Kg)
- ▣ **LP-NTWP19004P8** (190mm x 4.8mm. Bundle Diam 50mm. Max 22Kg)
- ▣ **LP-NTWP30004P8** (300mm x 4.8mm. Bundle Diam 85mm. Max 22Kg)
- ▣ **LP-NTWP43504P8** (435mm x 4.8mm. Bundle Diam 125mm. Max 22Kg)

▣ Nylon Tie Wraps Releasable.

Made for prototype construction, or for changing cable and duct organization in applications requiring servicing or addition of wires. Come in two lengths: 240mm and 500mm. With a bundle tension up to 115Kg.

How to order

- ▣ **LP-NTWR24012P8** (240mm x 12.8mm. Bundle Diam. 60mm Max 115Kg)
- ▣ **LP-NTWR50012P8** (500mm x 12.8mm. Bundle Diam. 140mm Max 115Kg)

▣ Nylon Tie Wraps Ultrax * Ultra Heavy Duty.

Made for the field professional, for long life and reliable cable and duct organization and bundle tensions up to 85Kg for heavy duty work. Come in several lengths from 480mm to 815mm.

How to order

- ▣ **LP-NTWU45008P0** (450mm x 8mm. Bundle Diam 130mm. Max 85Kg)
- ▣ **LP-NTWU60009P0** (600mm x 9mm. Bundle Diam 180mm. Max 85Kg)
- ▣ **LP-NTWU81509P0** (815mm x 9mm. Bundle Diam 245mm. Max 85Kg)



Wire and cable bundle ties and shrink tubing.

▣ Nylon Tie Wraps with Marking Tab.

These Tie Wraps, beside being a normal tie wrap, they are made mainly to identify bundles of cables, easy to write on the flat area with indelible inks.

How to order

- ▣ **LP-NTWM20004P6** Nylon Tie Wrap with Marking Tab 200mm x 4.6mm. Bundle Diam 50mm. Max 22Kg. Marking Pag 30x13mm, 25 per bag. 200 bags per box.
- ▣ **LP-NTWM30004P8** Nylon Tie Wrap with Marking Tab 300mm x 4.8mm. Bundle Diam 85mm. Max 22Kg. Marking Pag 55x13mm, 25 per bag. 200 bags per box.
- ▣ **LP-NTWM37004P8** Nylon Tie Wrap with Marking Tab 370mm x 4.8mm. Bundle Diam 105mm. Max 22Kg. Marking Pag 55x13mm, 25 per bag. 200 bags per box.

▣ Screw Mount Base

This screw mounting base lets you fix the tie wrap to a wall or surface, needing only a ram-plug, screw or screw, washer and nut and screwdriver and nut-driver to install it.

How to order

- ▣ **LP-NMBSA** Nylon Mount Base H, L, W, T 7, 15, 10, 5.1mm (A)
- ▣ **LP-NMBSB** Nylon Mount Base H, L, W, T 9.8, 23, 16, 9 mm (B)

▣ Velcro Tie Wraps.

Made for the field professional, for temporary or changing cable organization. Come in several lengths from 150 mm to 240mm and four colours for easy identification. Reusable, they let you bundle power cords, data and telephony cables behind your desktop computer or any other application.

How to order

- ▣ **For orders please refer to the website for more information.**
www.lanpro.com

▣ Shrinkable Tubing.

LanPro Shrink tubing with a variety of sizes to suit the application, in two colors, red and black, with a 1KV rupture Voltage and a 2:1 shrink ratio. ASTM D2671 standard approved, Halogen free, and with a 125°C shrink temperature. This series is Raychem compatible Versafit V2. Come in 100m or 200m spools.

How to order

- ▣ **For orders please refer to the website for more information.**
www.lanpro.com



iMC® 8000 Series

iMC® 8000 Series of Interchangeable Modular Components

iMC®

The iMC® 8000 series of Interchangeable Modular Components is a flexible system of modules designed with multimedia + data needs in mind and which the key feature is the inherent interchangeability and configurability in the field. Using the full line of iMC modules, the panels can be configured for a variety of multimedia applications. Blank modules may be used to reserve ports for future applications.

The iMC® 8000 is a must when you need to solve flexible connectivity applications like those encountered in intelligent buildings, hotel, hospitals, or in modern homes.

The user can mix-in and match any combination of Keystone® sized Fiber Optic, audio, Video modules besides the standard CAT 3 to CAT 6A UTP data networking jacks to obtain the exact performance level required for providing true multimedia capabilities all in one patch panel frame.

LanPro recommends the use of series 8000 RJ-45, Connectors on iMC patch Panels for compatibility.

The iMC® 8000 series of Interchangeable Modular Components comprises a series of 16, 24 or 48 port Unloaded Unshielded Patch panels and an extensive variety of iMC® 8000 series Keystone® compatible Modules that can be loaded in those patch panels, that are made to the most stringent specifications in order to give a long lasting service to your iMC® 8000 series of Interchangeable Modular Components' structured cabling installation.

Built with excellent workmanship standards, the components include the best materials and finishes that will comply with the Industry Standards of quality and performance.

No detail has been left behind in the design and manufacture of this product.

Features













iMC® 8000 Patch Panels:

- 16, 24 or 48 iMC® 8000 Keystone® Sized Patch Panels Unloaded capable of carrying Video, Sound, Fiber Optics or CAT 3 to CAT 6A UTP Keystone compatible Jacks/plugs.
- 19" rack mountable, using 1U or 2U vertical space on the rack.
- For Multimedia Compatible applications iMC® 8000 series of Interchangeable Modular Components.



16, 24 or 48 iMC® Keystone® Sized Patch Panels Unloaded

iMC® 8000 Keystone® Sized Modules,(typical).

Cat6A 	Cat6 	USB Port 	Banana Jack 
HDMI 	RCA 	CATV/MATV/SAT TV F to F 	SC Simplex Optical 
LC Duplex 	3.5mm Audio Stereo Connector 	IR Receiver 	RCA RGB Jacks 

Optical, Video, USB, IR, CATV and Audio modules to suit the application.

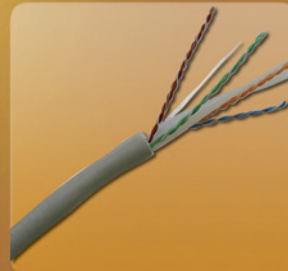


iMC® 8000 compatible Cabling Wall Plates and Cabling Management accessories.

LanPro manufactures a broad line of Wall Plates and Cabling Management Accessories that complement the iMC® 8000 basic line of Patch Panels and Keystone compatible modules, that you can mix and match with.



LanPro Performax® Cat 6A



Cabling System Solutions

Important Note: This is a short form catalog on CAT 6A products. Please refer to our detailed CAT 6A catalog or to our web page www.lanpro.com for specifications and how to order.



■ LanPro Performax® CAT 6A Cables

Solutions LanPro Shielded CAT 6A U/FTP Network Cable.....	40
LanPro Performax® Unshielded CAT 6A U/UTP Network Cable.....	42

■ LanPro Performax® Fully Shielded CAT 6A Patch Cords

LanPro Performax® Fully Shielded CAT 6A High Density Snag-Less Patch Cords.....	44
---	----

■ LanPro Performax® CAT 6A RJ45 Jacks

LanPro Performax® Punch Down Unshielded CAT 6A Modular Jacks.....	46
LanPro Performax® Series, Fully Shielded CAT 6A Modular Jacks.....	48

■ LanPro Performax® CAT 6A Patch Panels

LanPro Performax® series Unshielded CAT 6A Patch Panels with 24, 48 and 72 Ports.....	50
LanPro Performax® series Fully Shielded CAT 6A Patch Panels with 24, 48 and 72 Ports.....	52

Shielded CAT 6A U/FTP Network Cable

Solutions LanPro Shielded CAT 6A U/FTP Network Cable.

Performax ® CAT 6A U/FTP cable is the answer given by LanPro to the 10G channel demand imposed by today's high performance applications at reasonable prices. Tested to 500 MHz, the guaranteed performance of this cable meets the ANSI/TIA 568C.2 and ISO/IEC 11801 requirements, making it ideal for high-end transmission links supporting today's networking protocols.

Performax ® CAT 6A cable is available for immediate delivery in gray and blue colors, other colors available under request.

PERFORMAX



Applications

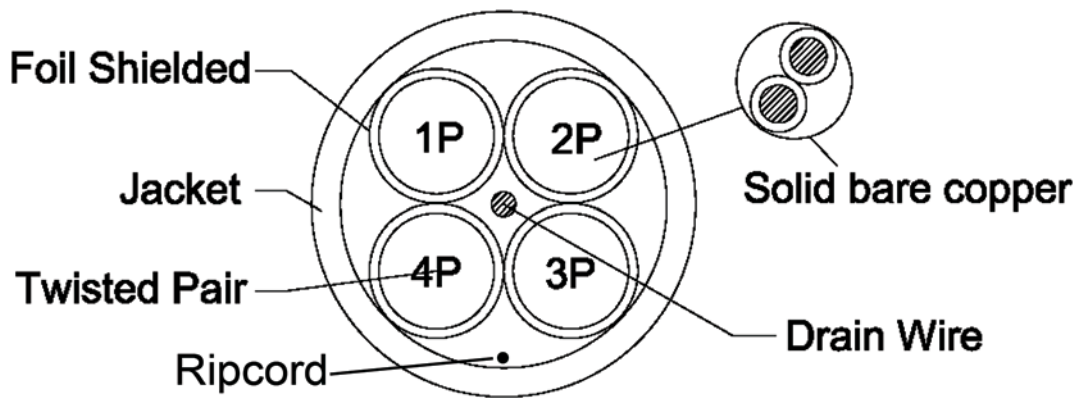
- Category 6A U/FTP cable is intended for high speed data applications including: 10G BASE-T, 10BASE-T, 155 Mb/s ATM, 4/16 Mb/s Token Ring.

Features

- | | |
|--|--|
| <ul style="list-style-type: none"> Specified and Tested to 500 MHz. Lower Bit Error Rates increases network efficiency and uptime. UL, ULc and ETL approved. Very Flexible, reduces installation costs and maintenance. Superior performance to traditional designs. 568-A and 568-B compatible. Rugged construction. Backward compatible with CAT 6 and CAT 5e systems. Excellent price/performance ratio. | <ul style="list-style-type: none"> Available in gray and blue colors. Others upon request. 4 pairs 23 AWG TP. Cover Jacket: Flame retardant Comes standard CM, with CMX, CMR and CMP with tough thermoplastic cover Jacket with a thickness of 0,48mm. Exceeds ISO/IEC 11801; ANSI/TIA/EIA-568-C.2, UL CM; UL CMX; UL CMR, UL CMP and CSA FT4. Flame Rating: UL 444 CMX, CM, CMR, CMP. Reliable 6A is a robust product. Packaged in one convenient presentation: 1000 feet per box. Weight: 28lbs (12.5Kgs), easy-pull Boxes. |
|--|--|

Shielded CAT 6A U/FTP Network Cable

Specifications



How to order

- **LP-CA700GRB** Performax ® CAT 6 A U/FTP Shielded Cable Solid 100% Copper CMX Gray color Jacket 1000 ft box
- **LP-CA700BLB** Performax ® CAT 6A U/FTP Shielded Cable Solid 100% Copper CMX Blue color Jacket 1000 ft box
- **LP-CA710BLB** Performax ® CAT 6A U/FTP Shielded Cable Solid 100% Copper CM Blue color Jacket 1000 ft box

Unshielded CAT 6A U/UTP Network Cable

LanPro Performax® Unshielded CAT 6A U/UTP Network Cable.

Unshielded LanPro Performax® CAT 6A U/UTP Network cable is the answer given by LanPro to the 10G channel demand imposed by today's high performance applications at reasonable prices. Tested to 500 MHz, the guaranteed performance of this cable meets the ANSI/TIA 568C.2 and ISO/IEC 11801 requirements, making it ideal for high-end transmission links supporting today's networking protocols.

Now with "flexible-x" construction, LanPro Performax® 6A UTP cable maintains the geometry of the pairs throughout the length of the cable, improving field installation as well as performance over 100 meter, 4 connector topologies.

Unshielded LanPro Performax® CAT 6A U/UTP Network cable is available for immediate delivery in gray and blue colors, other colors available under request.



Applications

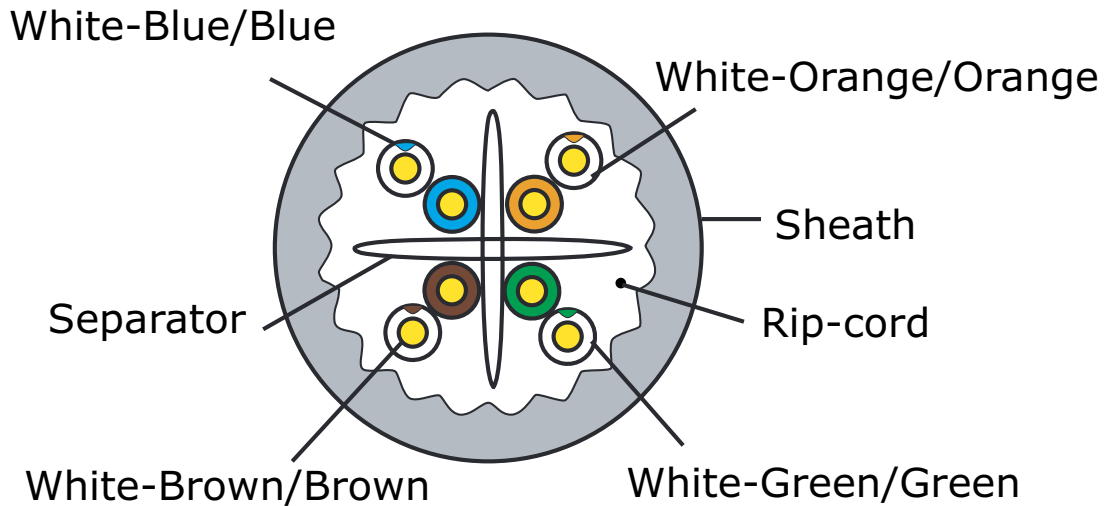
- Category 6A U/UTP cable is intended for high speed data applications including: 10G BASE-T, 10BASE-T, 155 Mb/s ATM, 4/16 Mb/s Token Ring.

Features

- | | |
|--|--|
| <ul style="list-style-type: none"> Specified and Tested to 500 MHz. Lower Bit Error Rates increases network efficiency and uptime. UL, ULc and ETL approved. Very Flexible, reduces installation costs and maintenance. Superior performance to traditional designs. 568-A and 568-B compatible. Rugged construction. Backward compatible with CAT 6 and CAT 5e systems. | <ul style="list-style-type: none"> Available in gray and blue colors. Others upon request. 4 pairs 23 AWG UTP. Cover Jacket: CMX (default) cover Jacket with a thickness of 6.9 ± 0.4 mm. Exceeds ISO/IEC 11801; ANSI/TIA/EIA-568-C.2, UL CM; UL CMX; UL CMR, UL CMP and CSA FT4. Flame Rating: UL 444 CMX, CM, CMR, CMP. Reliable 6A is a robust product. Packaged in one convenient presentation. 1000 feet (305±1.5m) per box. 40.5*40.5*21cm easy-pull Boxes or wooden Tray(Optional) |
|--|--|
- Excellent price/performance ratio.

Unshielded CAT 6A U/UTP Network Cable

Specifications



How to order

- **LP-CA000GRB** CAT 6A Lanpro Performax® U/UTP Cable Solid 100% Copper CMX Gray color Jacket 1000 ft box.
- **LP-CA000BLB** CAT 6A Lanpro Performax® U/UTP Cable Solid 100% Copper CMX Blue color Jacket 1000 ft box.

Fully Shielded CAT 6A Patch Cords

LanPro Performax® Fully Shielded CAT 6A High Density Snag-Less Patch Cords.

Performax® CAT 6A Fully Shielded S/FTP Patch Cords with Snag-Less plugs are the key to a new generation of high speed/performance cabling systems. Individually shielded pairs with aluminum foil, and overall tin plated 100% copper braid assures its high performance.

LanPro Performax® Patch Cords are made of top quality flexible cable, which translates into soft bends and easy handling.

Six Bright solid colors that don't cause confusion, UV additives that avoid color fading along the years. Crystal Clear RJ-45 plugs for improved visibility.

Our factory, hot-molded strain-relief provides very high mechanical strength assuring long life and many years of use and abuse.

All LanPro cords are 100% factory tested using top-of-the line test equipment.

Don't compromise the performance of your installation with homemade cords or cheap imitations. LanPro patch cords are not only very good, but also very affordable. Our units are guaranteed to perform in compliance with ISO/IEC 11801 standards, EIA/TIA 568-A/B, EN50173 and UL, CSA, ETL and 3P are verified.

Factory terminated and tested cords are required to achieve consistent category 6A channel performance.



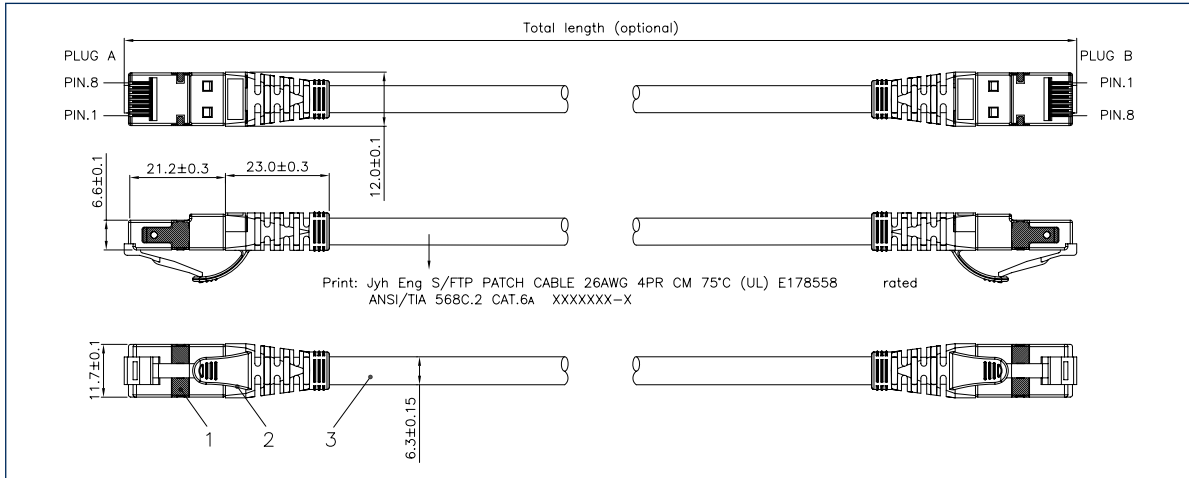
PERFORMAX

Features

- | | |
|--|---|
| <ul style="list-style-type: none"> ■ S/FTP Fully Shielded Networking Cable. ■ Compliance to ISO/IEC 11801 standards, EIA/TIA 568-A/B, EN50173 and UL, CSA, ETL and 3P ETL verified. ■ UL and CSA approved. ■ CAT 6A cords are backward compatible with 5e, 5, and 6 lower category modules. ■ Made of highly flexible, stranded data cable. ■ Factory molded strain-relief boots for a long life and great appearance. Manipulations and pulling of these cables are not longer a matter of concern for the installer. | <ul style="list-style-type: none"> ■ Fully, 100% factory tested. ■ 568-A/B Compatible. ■ Seven vivid colors to choose from. ■ 0.5 m, 1 m, 2 m, 3 m, 4 m, 6 m and 20 m lengths currently available. (Aprox: 1.5 , 3, 6, 10, 13, 20 and 65'). ■ Custom lengths available upon request. ■ Snag-less key. |
|--|---|

Fully Shielded CAT 6A Patch Cords

Dimensional Drawings



How to order

■ **LP-4CAFS** High Density Patch Cord 4 Pairs CAT 6

4CA	
4CA	4 Pairs CAT 6A

FS	
FS	S/FTP Fully Shielded

CC: Color	
WH	White
GN	Green
YL	Yellow
BL	Blue
GR	Gray
RD	Red
BK	Black

L: Length	
05	0.5m
1	1m
2	2m
3	3m
4	4m
6	6m
20	20m

Example:

LP-4CAFSWH05 Performax® CAT 6A Fully Shielded High Density Snag-Less Patch Cord 4pairs White 0.5m length.



Unshielded CAT 6A Modular Jacks

RJ45 Jacks - Punch Down

LanPro Performax® Punch Down Unshielded CAT 6A Modular Jacks.

The LanPro CAT 6A Performax® system is comprised of CAT 6A Performax® data cable, CAT 6A Performax® Patch Cords, CAT 6A PERFORMAX® Patch Panels and CAT 6A Performax® KEYSTONE® Modular Jacks.

LanPro has designed them specifically for high speed and bandwidth in excess of 500 MHz, and when specified with full shielding, they deliver maximum performance.

Our modular CAT 6A Performax® Jacks are designed to match our CAT 6A Performax® compatible products in a perfect way. All CAT 6A devices are very adaptable to customer changing requirements.

Our modular CAT 6A Performax® Jacks allow for universal termination, either T568-A or T568-B and are Punch-down design, thus offering easiness and flexibility to the installer.

Notice: All our Jacks are also suitable for CAT 3 system cabling and the RJ-11 is completely compatible with them, however, if you need a specific CAT 3/Telephony jack, please look at our CAT 3 series of products.



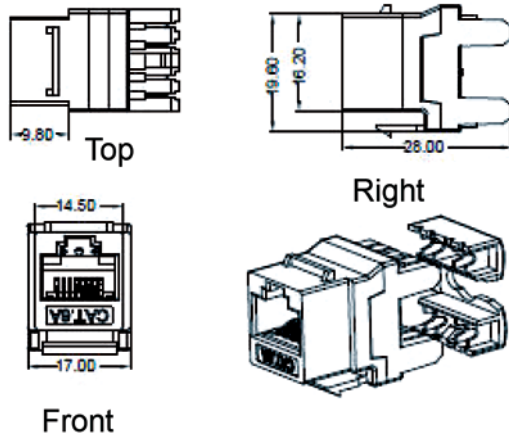
Features

- | | |
|---|---|
| <ul style="list-style-type: none"> Compliant with ANSI/TIA 568 C.2 IEC 60603-7-51. UL listed. ETL Intertek tested. Our standard style allows compatibility with many other brands and systems. High performance Copper alloy contacts & 50 micro-inches of gold plating. 750 mating cycles minimum. | <ul style="list-style-type: none"> Competitively priced. Material: ABS UL94V-0. Positive latch system. UTP/FTP capable. Compatible 110 Punch-Down tools. Suitable for 23-26 AWB solid and stranded cable. Seven vivid colors to choose from. |
|---|---|

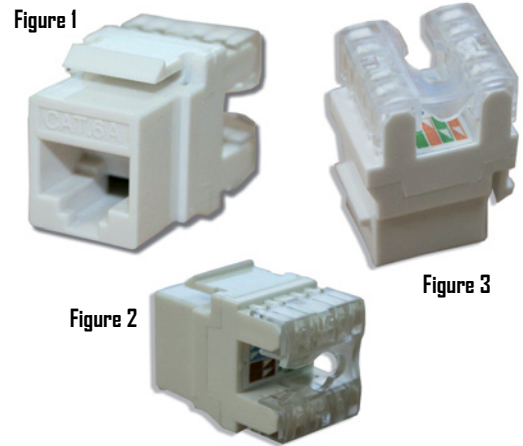
Unshielded CAT 6A Modular Jacks

RJ45 Jacks - Punch Down

Dimensional Drawings



Different Views



How to order

- **LP-8CAPUSCC** Performax® Modular CAT 6A Jack Unshielded, Color.

CC: Color	
WH	White
GN	Green
YL	Yellow
BL	Blue
GR	Gray
RD	Red
BK	Black

Example:

LP-8CAPUSRD Performax® Modular Jack CAT 6A Punch Down Style, Unshielded, Red Color 8000 Series.

Fully Shielded CAT 6A Modular Jacks

RJ45 Jacks

LanPro Performax® Series, Fully Shielded CAT 6A Modular Jacks.

The LanPro CAT 6A Performax® system is comprised of CAT 6A Performax® data cable, CAT 6A Performax® Patch Cords, CAT 6A PERFORMAX® Patch Panels and CAT 6A Performax® KEYSTONE® Modular Jacks.

LanPro has designed them specifically for high speed and bandwidth in excess of 500 MHz, and when specified with full shielding, they deliver maximum performance.

Our modular CAT 6A Performax® Jacks are designed to match our CAT 6A Performax® compatible products in a perfect way. All CAT 6A devices are very adaptable to customer changing requirements.

Our modular CAT 6A Performax® Jacks allow for universal termination, either T568-A or T568-B and are Punch-down design, thus offering easiness and flexibility to the installer.

Notice: All our Jacks are also suitable for CAT 3 system cabling and the RJ-11 is completely compatible with them, however, if you need a specific CAT 3/Telephony jack, please look at our CAT 3 series of products.



PERFORMAX

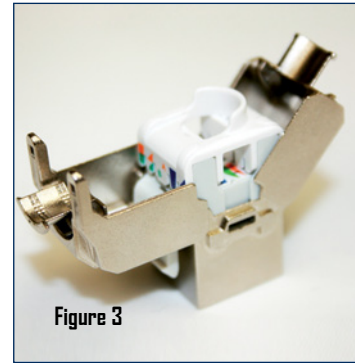
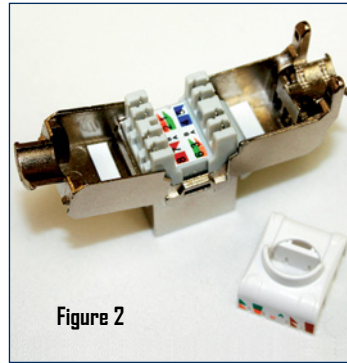
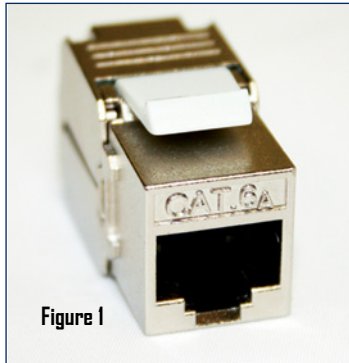
Features

- | | |
|--|---|
| <ul style="list-style-type: none"> Compliant with ANSI/TIA 568 C.2 IEC 60603-7-51. UL listed. ETL Intertek tested. Our standard style allows compatibility with many other brands and systems. Shielded, rugged, full metal construction. | <ul style="list-style-type: none"> 750 mating cycles minimum. Competitively priced. Material: ABS UL94V-0. Positive latch system. UTP/FTP capable. Compatible with both Krone and 110 punch down tools. Suitable for 23-26 AWG solid and stranded cable. |
|--|---|
- High performance Copper alloy contacts & 50 micro-inches of gold plating.

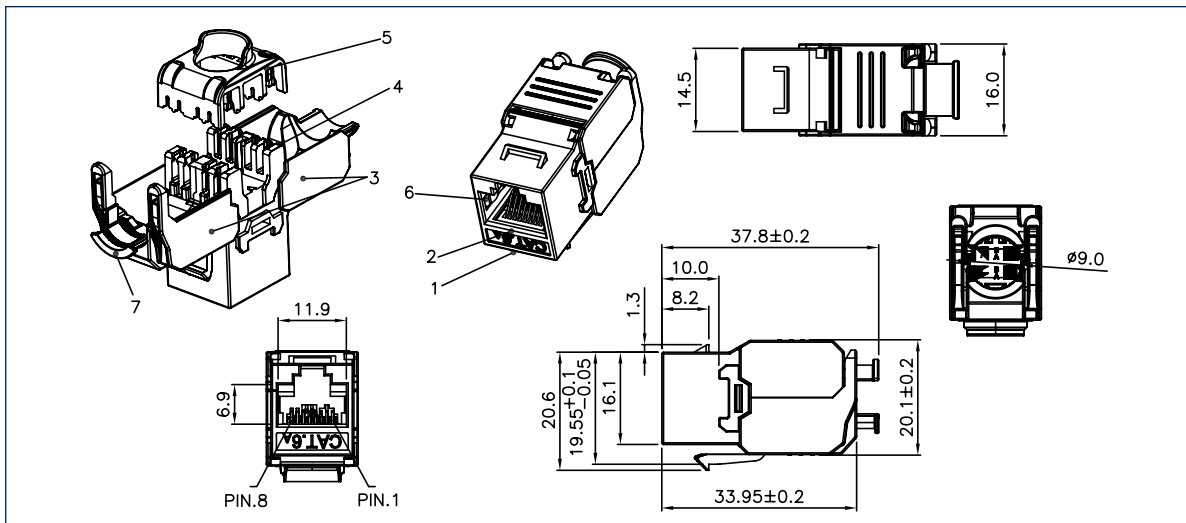
Fully Shielded CAT 6A Modular Jacks

RJ45 Jacks

Different Views



Dimensional Drawings



How to order

- **LP-8CAPFSNP** Performax ® Modular Jack CAT 6A Punch Down Style, Fully Shielded, Nickel Plating Color.
- **LP-8CATFSNP** Performax® Modular Jack CAT 6A Tool-less Style, Fully Shielded, Nickel Plating Color.

Unshielded CAT 6A Patch Panels

24, 48 and 72 Ports.

LanPro Performax® series Unshielded CAT 6A Patch Panels with 24, 48 or 72 Ports.

The Performax ® series of CAT 6A Unshielded patch panels by LanPro are made to the most stringent specifications in order to give a long lasting service to your structured cabling installation.

These patch panels are built with the best materials and finishes that comply with the Industry Standards of quality and performance.

No detail has been left behind in the design and manufacture of this product.

These Patch Panels have 24, 48 or 72 ports, with 0° Unshielded RJ45 connectors and 180° New 110 punch rear connectors.

The CAT 6A permanent Link Test Conforms to the ANSI/TIA/EIA-568 B.2-1 which results in a ≥ 2.0 dB margin of Worst Pair Next.

Connectors have 50 micro-inches of gold plating over Phosphor Bronze with Nickel Plating, for a minimum of 750 cycles.



Features

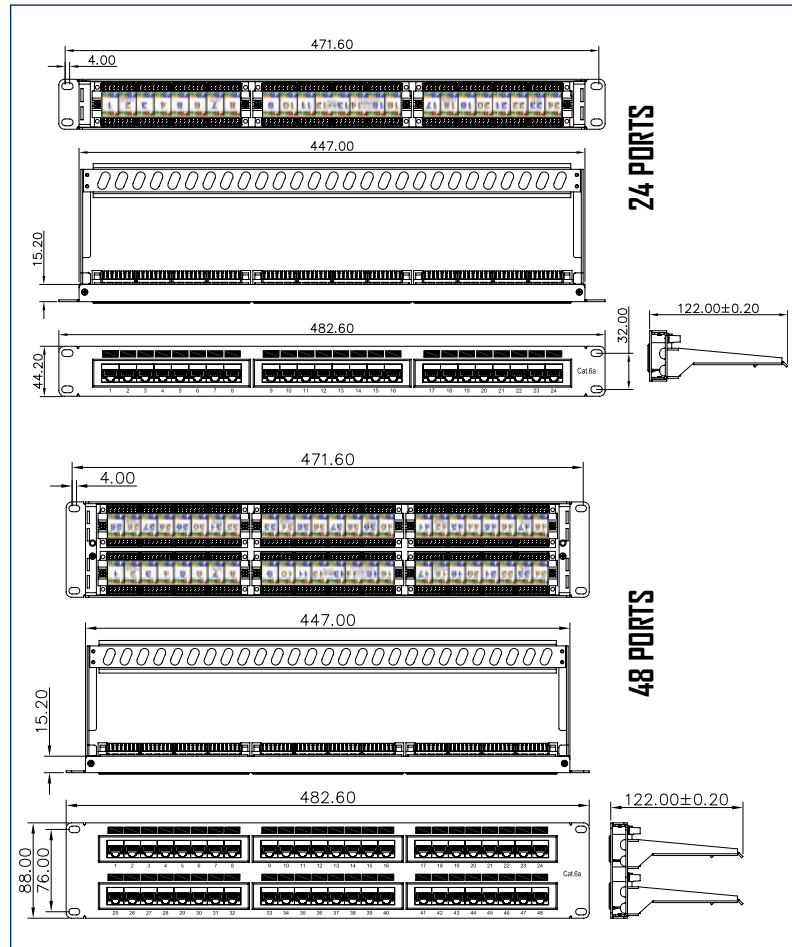
- | | |
|---|--|
| <ul style="list-style-type: none"> ■ 24, 48 or 72 ports. ■ 0° UTP Jacks. ■ 180° Connectors for 110 Punch Tools with 200 punching cycles minimum. | <ul style="list-style-type: none"> ■ Conforms to the ANSI/TIA/EIA-568 B.2-1 which results in a ≥ 2.0 dB margin of Worst Pair Next. ■ 50 micro-inches of gold plating over Phosphor Bronze with Nickel Plating, for a minimum of 750 cycles. ■ 19" rack mountable, using 1 U (24 Port), 2 U (48 Port) or 3 U (72 Port) vertical space on the rack. |
|---|--|

Unshielded CAT 6A Patch Panels

24, 48 and 72 Ports.

Dimensional Drawings

Different Views



How to order

- **LP-P8CA24180USD** Performax® series 24 Port CAT 6A Unshielded Patch Panel, Black Color.
- **LP-P8CA48180USD** Performax® series 48 Port CAT 6A Unshielded Patch Panel, Black Color.
- **LP-P8CA72180USD** Performax® series 72 Port CAT 6A Unshielded Patch Panel, Black Color.

Fully Shielded CAT 6A Patch Panels

24, 48 and 72 Ports.

LanPro Performax® series Fully Shielded CAT 6A Patch Panels with 24, 48 or 72 Ports.

The Performax® series of CAT 6A 100% Shielded patch panels by LanPro are made to the most stringent specifications in order to give a long lasting service to your structured cabling installation.

These patch panels are built with the best materials and finishes that comply with the Industry Standards of quality and performance.

No detail has been left behind in the design and manufacture of this product. These Patch Panels have 24, 48 or 72 ports, with 0° Fully Shielded RJ45 connectors with individual locking gates for every single port to avoid dust and other contaminants to enter into the connection system and 90° Kröne punch rear connectors with individual grounding screws for cabling ground wires.

The 10G Channel transmission performance is in compliance with TIA/EIA 568-B.2-10 10G & ISO/IEC 11801 standards.

Connectors have 50 micro-inches of gold plating over Phosphor Bronze with Nickel Plating, for a minimum of 750 cycles complying the (ISO/IEC 11801, IEC 60603-7-5) standards.



Features

- | | |
|--|---|
| <ul style="list-style-type: none"> ■ Fully Shielded, completely enclosed. ■ Frame Grounding Post easily handled. ■ ETL verified to the 10G Channel transmission performance in compliance with TIA/EIA 568-B.2-10 10G & ISO/IEC 11801 standards. ■ UL and CSA approved. ■ Superior performance to traditional designs. ■ 568-A and 568-B compatible. ■ 90° Kröne punch rear connectors. ■ Individual grounding screws for cabling ground wires. ■ Individual locking gates for every single port to avoid dust and other contaminants into the connection system. | <ul style="list-style-type: none"> ■ Rugged construction. ■ Cable Management clips at the rear of the unit. ■ Backward compatible with CAT 6 systems. ■ Black durable and elegant finish. ■ High performance 50 microinches of gold plating over Phosphor Bronze with Nickel Plating, for a minimum of 750 cycles complying the (ISO/IEC 11801, IEC 60603-7-5) standards. ■ 10/100/1000/10000M (10G). ■ Outstanding price/performance ratio. ■ Available in 24, 48 or 72 ports. ■ Fully compatible with 19" rack mount standards, 1U Rack Unit height. |
|--|---|

How to order

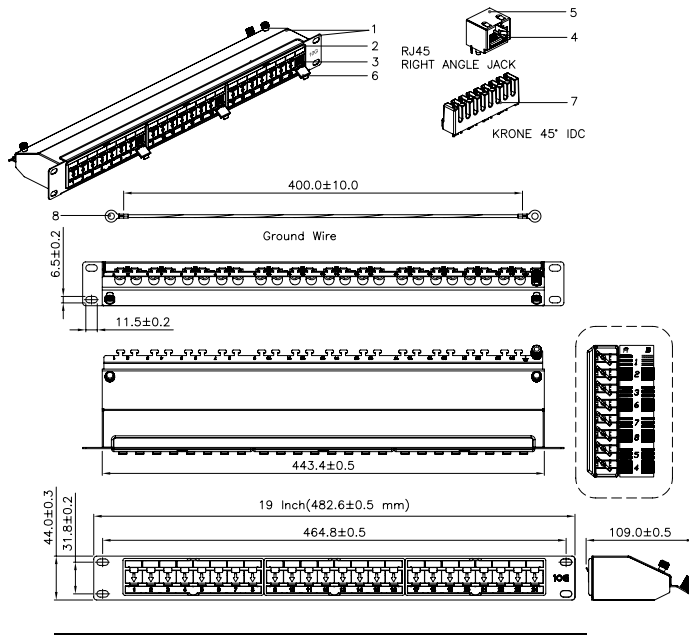
- | | |
|-------------------------|--|
| ■ LP-P8CA2490FSK | Performax® series 24 Port CAT 6A Fully Shielded Patch Panel. |
| ■ LP-P8CA4890FSK | Performax® series 48 Port CAT 6A Fully Shielded Patch Panel. |
| ■ LP-P8CA7290FSK | Performax® series 72 Port CAT 6A Fully Shielded Patch Panel. |

Fully Shielded CAT 6A Patch Panels

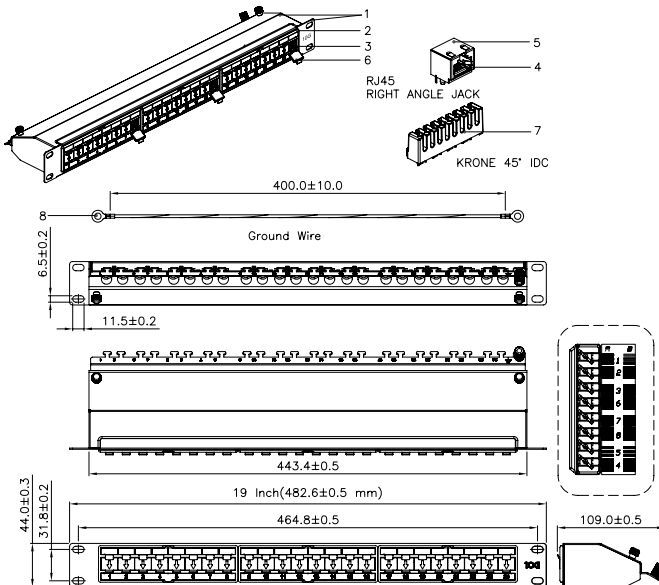
24, 48 and 72 Ports.

Dimensional Drawings

24 PORTS



48 PORTS



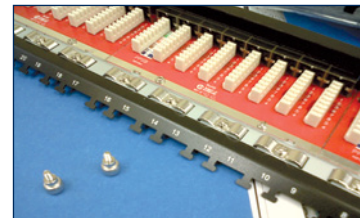
Different Views



Fully shielded and easy to open with hand driven chromed nut.



Frame Grounding post.



Krone connectors, individual cable shield grounding and Tie-wrap posts.



Individual locking gates open.



Individual locking gates closed.

New Product

When 50% is much more than half?

Introducing the new LanPro® Half Size design patch panels:

Its unique design in half "U" size and sockets with shutters saves space and easily fits in the rack.

Both styles (FTP) and (UTP) are available to maximize rack space and reduce costs in high-density applications.

Standards Compliance:

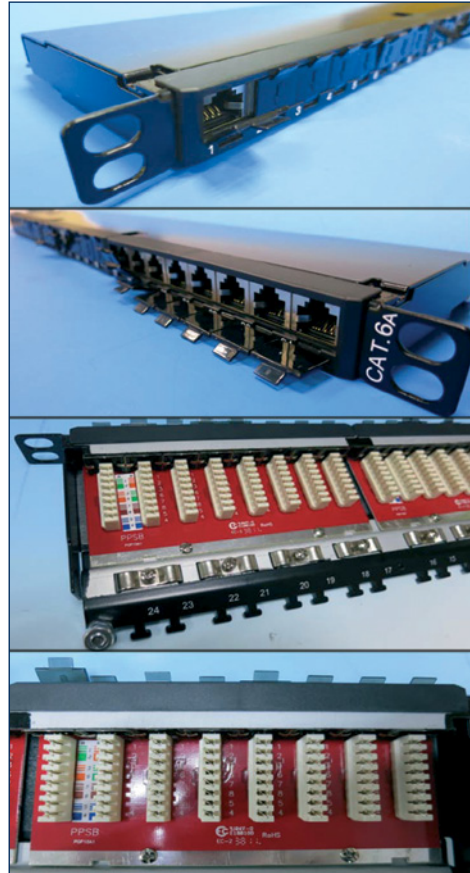
- Meets or exceeds all applicable standards: UL Listed, TIA/EIA 568C.2 & ISO/IEC 11801 standard
- ETL verified.
- Wiring Standard: T568-A, T568-B.

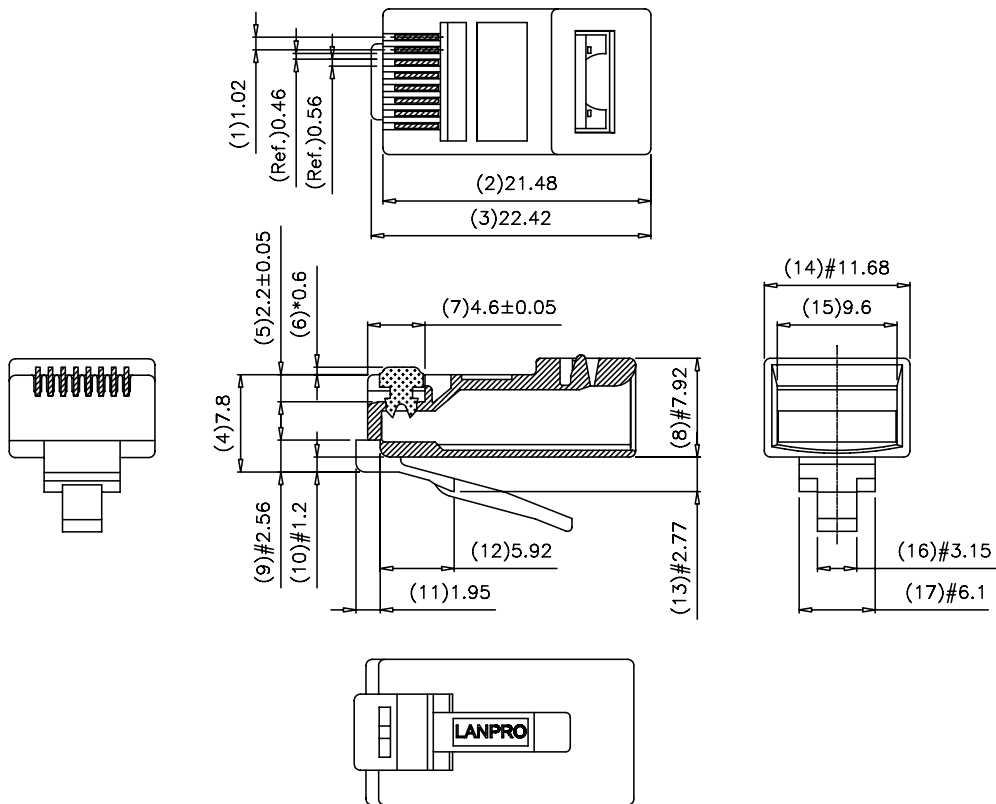
Typical Specification

- Capacity: 24 port.
- Version: Flat profile for Shielded & Un-Shielded.
- Category: Category 5e (100 MHz), 6 (250 MHz) and CAT 6A (500 MHz).
- Cable Type: 8-conductor U/UTP, U/FTP, F/UTP, S/FTP, SF/UTP.
- Termination type: KRONE & Dual punch down 90-degree.
- Wiring standard: 568-A & 568-B.
- Surface treatment: lacquer finish RAL9005 (black).

Design Considerations:

- Mounts on 19" equipment racks.
- 0.5U patch panel delivers a high density with the ability to present 48port in 1U.
- All sockets have shutter feature which eases the user interface.
- Isolation gap on circuit board minimizes alien crosstalk (AXT) between ports.
- Innovative design metal panel making it Robust & Sleek.
- C6A series meet or exceed the requirements for channel-level performance for TIA/EIA and ISO.
- The PCB design combines advance balancing methodology with pair isolation technique used in IDC blocks.
- 8 port modular tray unit assembly.
- Automated production guarantees the very stable performance.





Work Area





The LanPro line of Work Area products add up to the ample variety of solutions available to the Systems Integrator.

Faceplates, Surface Mount Boxes, Miniboxes, Raceways and Accessories compatible with LanPro modular jacks help technicians assemble a surface mounted wiring solution. Our high quality materials are UV resistant and do not fade, turn yellow or crack under Sunlight. Additionally, they are made of durable ABS UL94V-0 materials in order to comply with safety standards. Molds made to exact dimensions permit the exchange of different brands of jacks.

As seen in this catalog, LanPro has included the Measurement instruments and tools mostly needed by technicians in the field to help them develop a network system that complies with accepted standards. You will find a durable and affordable Lantester for the basic checking of UTP cable circuits along with several precision tools that lets the technician prepare the wires, cut, strip and finally installation punch. LanPro supplies superior performance standard products and is eager to work with you on custom needs for OEM/ODM projects. LanPro has the capability to produce custom colors and manufacture its products under OEM contracts.

Whatever your requirements may be, LanPro will always supply affordable, reliable and friendly solutions along with a personalized service. LanPro provides quality without compromise, longer life spans, and top notch reliability.





Work Area

Faceplate.....	63
Surface Mount Box.....	64
Surface Miniboxes.....	65
Raceways.....	66
Raceways Accessories.....	67

Equipment

Measurement

Lantester.....	69
----------------	----

Tools

LPT-210C Low Cost Metallic Modular Crimping Tool.....	70
LPT-2008R Ratchet Crimper Tool.....	70
LPT-S501A Universal Stripping Tool.....	70
LPT-314BK Punch Down Tool.....	71
LPT-B1 Punch Base.....	71
LPT-222C Spring Loaded Precision Cutting Tool.....	71
LPT-223C Cutter & Stripper.....	72
LPT-CXT501 Coaxial Cable Stripper.....	72
LPT-300 Punch Down Tool.....	72
LPT-5680R Crimper.....	73
LPT-PLCT101 Long Nose Plier With Side Cutter.....	73
LPT-415DR 4 and 5 Pairs Punch Down Tool.....	73



The LanPro faceplates (also called flush plates or cover plates) combine high capacity with multiple connectors, allowing the use of different types of modular jacks devices. They are totally compatible with LanPro CAT 6, 5, 5e and CAT 3 systems.

The screw cap design makes a better front looking.

This faceplate has standard American size, and is suitable to be used on any standard USA application.

Made of durable UV resistant UL94V-0

Tech Tip: Our modular telephone jacks (CAT 3) fits perfectly with these faceplates.

Features

- | | |
|--|--|
| <ul style="list-style-type: none"> Thick and robust design. Do not yellow with sun light. Do not crack . Precise tooling for perfect fitting. | <ul style="list-style-type: none"> V series (Vertical alignment) or H Series for a Horizontal one. Can take CAT 6, 5, 5e, 3 and other standard models. Interchangeables with most popular brands. |
|--|--|

How to order

■ LP-3317XXYY

XX: Direction & Port

- | | |
|----------------------------|------------------------------|
| V1= Vertical 1 port | V6= Vertical 6 port |
| V2= Vertical 2 port | H1= Horizontal 1 port |
| V3= Vertical 3 port | H2= Horizontal 2 port |
| V4= Vertical 4 port | H3= Horizontal 3 port |

YY: Color

- IV:** Ivory
WH: White

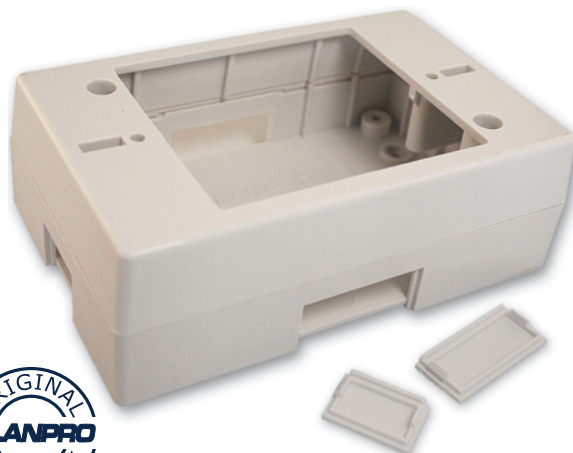
CAT 3 AND TELEPHONY

The LanPro LP-318W Surface Mount Box is the answer to installations where the outlet cannot be recessed into the floor or wall box.

It has compatible dimensions with other brand faceplates and wall boxes. Standard color is oyster white (not snow white or beige). It is easy to clean, with a non-porous surface, and impact resistant. It fits LanPro raceways as well as other brands ones.

The LP-318W has an important advantage over traditional boxes from recognized competitors: it has replaceable recessed notches. Cutters, knives, or pliers are not needed to puncture the raceways entries. Some finger pressure exerted from the inside of the box and you get the perfect opening for the LanPro raceway that has been chosen.

Material: ABS UL94V-0



Features

- | | |
|--|---|
| <ul style="list-style-type: none"> ■ Dimensions:
H: 124.6 mm
W: 81.2 mm
D: 41.9 mm ■ It will not fade or crack under sunlight. ■ Very strong construction. Able to take use and abuse for many years. | <ul style="list-style-type: none"> ■ Low profile, non-intrusive design. ■ Perfect match for our raceways, as well as other brands. ■ Surface finish: Non-porous, impact resistant. ■ Color: Oyster white. |
|--|---|

How to order

- **LP-318W Surface Mount Box for USA Style Faceplates.**



Our MiniBoxes are small, low profile, and discrete. Accurate and secure snap-on covers.

No need for tie-wraps or other things.

Once cover is locked in place, the cable is gently pressed in the back of the unit keeping it safe from sliding.

Video, Coax and Fiber modules can be purchased separately and quickly installed on the MiniBoxes. No need to order special configurations. Evenmore, all LanPro jack modules are compatible with our surface mounted boxes.

UL approved. LanPro jack surface mounted MiniBoxes are made of tough ABS UL94V-0 and available one or two ports.

Features

■ Dimensions:

Double: L 60 x W 54.4 x H 26.6 mm

Single: L 60 x W 31.1 x H 26.6 mm

■ Single and Pair design available.

■ Compatible with all categories of jacks.

How to order

■ **LP-3301XX** Single Mounted Box

■ **LP-3302XX** Double Mounted Box

XX: Color

IV: Ivory

WH: White

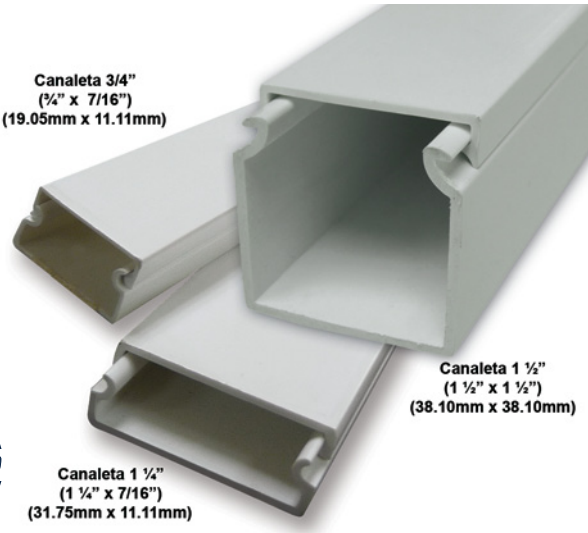
A functional, affordable, attractive solution for wire enclosure applications in commercial, industrial and residential environments.

This product line includes extruded raceways with pre-applied adhesive backing, fittings, junction boxes, ground wire guards and spiral tubing. All the parts needed to custom design a wire management system.

Paints easily with Latex, easy to install, easy to use. Attractive design. Complete line of accessories for "T", ends & corners. Flame resistant PVC, UL94V-0 compliant. Holds, guides & protects wire and cables up to 600 volt Adhesive backing. Doesn't fall off wall even with heavy cables. Custom colors on request. 3 Sizes available.



Canaleta 3/4"
(3/4" x 7/16")
(19.05mm x 11.11mm)



Canaleta 1 1/2"
(1 1/2" x 1 1/2")
(38.10mm x 38.10mm)

Canaleta 1 1/4"
(1 1/4" x 7/16")
(31.75mm x 11.11mm)

Features

■ Low cost solution for superficial wiring.

■ Complete array of accessories for any kind of installation.

■ To facilitate Category 5e, 6, 7 and fiber optic installation, a one inch minimum bend radius is maintained on parts such as ceiling entries, joint, inside & outside covers, 3 & 4 way tees, flat & fiber optic elbows and end caps.

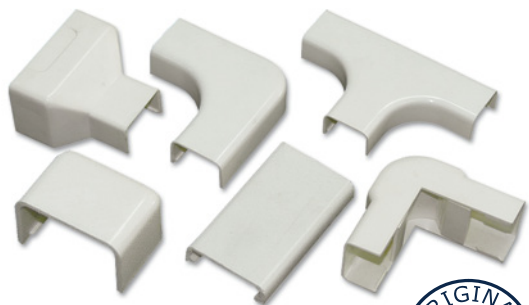
■ Raceways are stocked in 2 m (6.5 ft) lengths and three versatile sizes (3/4", 1 1/4" and 1 1/2") (19.05 mm, 31.75 mm and 38.10 mm). Custom lengths are available upon request. However, the usual length stocked is the 2 m (6.5 ft) one. An industry standard.

How to order

■ **LP-07550 (3/4" x 7/16") (19.05 mm x 11.11 mm) One Piece Raceway**

■ **LP-12575 (1 1/4" x 7/16") (31.75 mm x 11.11 mm) One Piece Raceway**

■ **LP-20010 (1 1/2" x 1 1/2") (38.10 mm x 38.10 mm) One Piece Raceway**



End Cap



Ceiling Entry



Joint Cover

LanPro Surface nonmetallic raceway is to be utilized in dry interior locations only as defined in Article 388 of the National Electrical Code, as adopted by the National Fire Protection Association and approved by the American National Standards Institute.

Complementing the line of raceways, a variety of accessories add to the offer, fittings, junction boxes, ground wire guards and spiral tubing. All the parts needed to custom design a wire management system.

Paints easily with Latex, easy to install, easy to use. Attractive design. Complete line of accessories for "T", ends & corners. Flame resistant PVC, UL94V-0 compliant. Holds, guides & protects wire and cables up to 600 volt Adhesive backing. Doesn't fall off wall even with heavy cables. Custom colors on request. 3 Sizes available.

■ End Cap

Available for 3/4"(19.05 mm), 1¼(31.75 mm) and 1½"(38.10 mm) raceways.

■ LP-EC075

■ LP-EC125

■ LP-EC200

■ Ceiling Entry

Available for 3/4"(19.05mm), 1¼(31.75mm) and 1½"(38.10mm) raceways.

■ LP-CE075

■ LP-CE125

■ LP-CE200

■ Joint Cover

Available for 3/4"(19.05mm), 1¼(31.75mm) and 1½"(38.10mm) raceways.

■ LP-JC075

■ LP-JC125

■ LP-JC200

■ Inside Corner

Available for 3/4"(19.05mm), 1¼(31.75mm) and 1½"(38.10mm) raceways.

- LP-IC075
- LP-IC125
- LP-IC200



Inside Corner

■ Outside Corner

Available for 3/4"(19.05mm), 1¼(31.75mm) and 1½"(38.10mm) raceways.

- LP-OC075
- LP-OC125
- LP-OC200



Outside Corner

■ Flat Elbow

Available for 3/4"(19.05mm), 1¼(31.75mm) and 1½"(38.10mm) raceways.

- LP-FE075
- LP-FE125
- LP-FE200



Flat Elbow

■ 3 Way Tee

Available for 3/4"(19.05mm), 1¼(31.75mm) and 1½"(38.10mm) raceways.

- LP-3W075
- LP-3W125
- LP-3W200



3 Way Tee



The LanPro LanTester is an indispensable tool for networking installation and maintenance. This compact and economical unit is designed specifically for on-site working staff. It can be used in testing network type cables (RJ-45). It satisfies the majority of the telephone and computer cable testing requirements.

Features

- Informative status lights
- Advanced and intuitive design for easy testing.
- Ability to test remote locations or installed locations with remote unit.
- Automatically runs all tests and checks for continuity, open, shorted and crossed wire pairs.

- **Specifications :**
 - Tests RJ-45-EIA 568-A / 568-B (AT&T 258A), 10 /100/1000 Base-T premises.
 - Deluxe carrying bag included
 - It can test up to 1000ft.
 - 9-volt battery required (not included)

Caution Note: Never use a tester on a "live" network.

How to order

- **LP-LanTester - RJ45 Network Tester.**

■ LPT-210C LOW COST METALLIC MODULAR CRIMPING TOOL

Metallic, Low cost tool, ideal for low to medium duty use.

You can cut, strip and crimp thousands of times without mistake.

Only for RJ45 plugs. Designed for cable 8P8C. Much better quality and lasting performance than cheap plastic models.

Features

- Durable, long lasting carbon steel.

How to order

- **LPT-210C Low Cost Metallic Modular Crimping Tool.**

■ LPT-2008R RATCHET CRIMPER TOOL

This is the workhorse for the professional, avid hobbyist or enthusiast. With 8 position punches. Crimps 8P8C/R-J45, 6P6C/RJ-12, 6P4C/RJ-11, 4P4C & 4P2C Plugs & DEC/OFFSET Plug-6P6C.

Only comparable to famous and extremely expensive brands as Greenlee and AMP models.

LPT-2008R is heavy, strong, and made to outperform traditional low cost models. Round cable stripper is builtin.

A ratchet mechanism eases the operation and makes second-to-none connections. Repeatable crimp action for consistent, high quality connections.
Length: 8.3" (210 mm).

How to order

- **LPT-2008R**

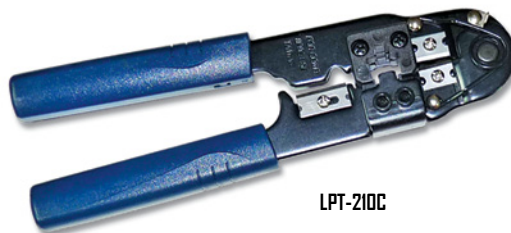
■ LPT-S501A UNIVERSAL STRIPPING TOOL

For stripping round cable, stranded cable, multiconductor wire, and irregular out shape cable from AWG22 up to 3/8".

Cheap, compact, and easy to use. Safe for the novice. Useful for the skilled.

How to order

- **LPT-S501A Universal Stripping Tool**



LPT-210C



LPT-2008R



LPT-S501A



LPT-314BK



LPT-14B



LPT-14BK



■ LPT-314BK PUNCH DOWN TOOL

Traditional design, very durable and reliable. Includes the blade for better economy. (Most of the models need to buy the blade separately) Body made of resin and fiberglass for outstanding durability.

Do not compare to cheaper plastic imitations. High pressure impact capability. Pressure is adjustable. Has storage on the top of the tool for additional spare blades.

How to order

- LPT-314BK Punch Down Tool
- LPT-14BK Krone type blade for LPT-314BK
- LPT-14B 110/88 type Blade for LPT-314BK

■ LPT-B1 PUNCH BASE

Necessary tool that allows the easy punch down of LanPro modular jacks, reducing fatigue, improving accuracy and avoiding damage to the hands, body or even furniture when punching down a module. The pressure power of our tools can be as high as 80kgs, and this base takes care of that force.

How to order

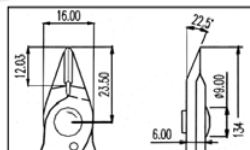
- LPT-B1



LPT-B1



LPT-222C



■ LPT-222C SPRING LOADED PRECISION CUTTING TOOL

Cutting tool for thin wires and component leads. Spring loaded for comfortable use, Ergonomically designed grippers for tireless work. Colored for locating it easily on the work bench. Precise cutting of component leads. Length: 5.3" (133 mm). Cuts up to 18 AWG or 1 mm copper or soft metal. Material thickness: 3.0 mm.

How to order

- LPT-222C Spring Loaded Precision Cutting Tool.

■ LPT-223C CUTTER & STRIPPER

Cutting plier for larger caliber wires. Ideal for structured cable wires and low caliber electrical conductors. Small and powerful. For a precise cutting please use the model LPT-222C. For stripping AWG 30-10 (up to 0.5-4.0 mm). Made of carbon steel and hardened. Length: 5" (127mm).

How to order

- LPT-223C Cutter & Stripper



LPT-223C



■ LPT-CXT501 COAXIAL CABLE STRIPPER

Made specially for RG59&6 / RG11&7 RF Cables. Easily strips outer jacket without damaging overall braid.

How to order

- LPT-CXT501 Coaxial Cable Stripper



LPT-CXT501

■ LPT-300 PUNCH DOWN TOOL

Practical and clever multifunctional tool that eases punching and manipulating wires. With adjustable impact force.

Comes with the LPT-30T blade, suitable for punching 110/88 terminal blocks.

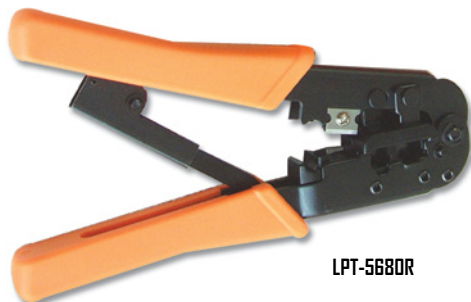
How to order

- LPT-300 Punch Down Tool with 110/88 blade standard
- LPT-30T for 110/88 Terminal blocks
- LPT-30BK for Krone Terminal blocks



LPT-300

LPT-30T
(110/88 Terminal blocks)



LPT-5680R



LPT-PLCT101



LPT-415DR

■ LPT-5680R CRIMPER

Low cost, good quality tool for the amateur and low budget project. Allows the exact crimping of RJ45 and RJ11 modular plugs. Also contains a cutting blade within the body design.

How to order

■ LPT-5680R Crimper

■ LPT-PLCT101 LONG NOSE PLIER WITH SIDE CUTTER

Traditional long nose plier and cutter from LanPro. Low cost model with comfortable and durable compound grip. Cross-Hatching on jaws grabs work tightly. Precision made of fine, polished, high carbon drop forged steel.

How to order

■ LPT-PLCT101 Long Nose plier with side cutter

■ LPT-415DR 4 AND 5 PAIRS PUNCH DOWN TOOL.

The LanPro 4 and 5 pairs punch down saves a considerable amount of time and money during installation by reducing the number of punch-downs required. It is designed to provide a maximum of 80 Kg impact in order to properly seat the connecting blocks onto the wiring blocks and to terminate 4 or 5 pairs of wires simultaneously. It's ergonomic design makes it easy to use and operate.

For use with 110 style blocks clips only.

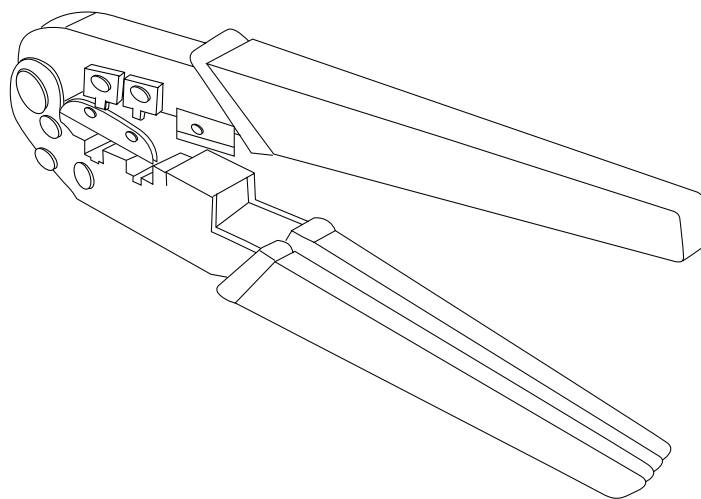
How to order

■ LPT-415DR 4 and 5 pairs punch down tool.



LP-KT101

Professional Network Tool Kit



www.lanpro.com

Diversity



LanPro's ever-expanding line of products feature unmatched quality and performance.

We offer flexible solutions for all your wired and wireless application needs.

Count on us for your more stringent network requirements.



**Word Class Cabling and
Work Area solutions.**

LANPRO

The Natural Choice in Networking
www.lanpro.com
1880 NW 93rd Avenue
Doral, Florida 33172, USA
Phone: 305 640 0733
email: sales@lanpro.com



V. 104C&WAENG

LanPro™ is a member of One Network Alliance Group of Companies.
LanPro™, The natural choice in networking and LanProfessional are US registered brands.

